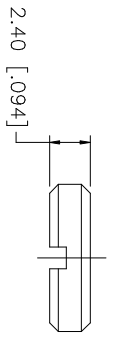
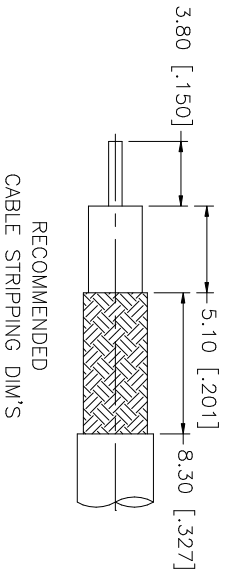
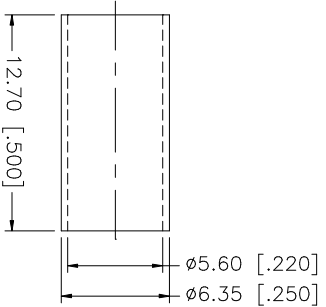
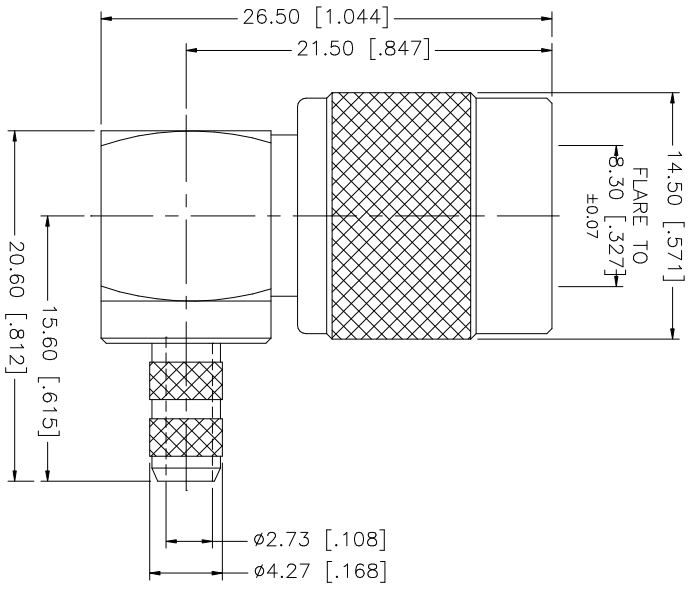


REV.	DATE	DESCRIPTION
A	04/31/03	UPDATE DRAWING FORMAT



NOTE:  
1. CONTACT PIN TO SOLDER

9																				
8																				
7																				
6	NUT	BRASS	NICKEL	1																
5	FERRULE	COPPER	NICKEL	1																
4	GASKET	RUBBER	RED	1																
3	CONTACT PIN	BRASS	GOLD	1																
2	INSULATOR	TEFLON	NATURAL	1																
1	BODY/BARREL	BRASS	NICKEL	1																
	DESCRIPTION	MATERIAL	FINISH	QTY																
					UNLESS OTHERWISE SPECIFIED DIMENSIONS ARE IN MILLIMETERS. DIMENSIONS IN [ ] ARE IN INCHES AND FOR CUSTOMER REFERENCE ONLY. TOLERANCES FOR MILLIMETERS ARE: UNLESS OTHERWISE SPECIFIED: 0.5 - 8mm ± 0.20mm 8 - 30mm ± 0.40mm 30 - 120mm ± 0.50mm TOLERANCES FOR INCHES ARE: UNLESS OTHERWISE SPECIFIED: .020 - .315 = ± 0.007" .315 - 1.180 = ± 0.015" 1.180 - 4.724 = ± 0.020"					APPROVALS					DATE					
					DRAWN G.R.S.					04/31/03										
					CHECKED															
					ISSUED															
					SHEET 1 OF 1															
					PART NO. 122430															
					PART DESCRIPTION TNC R/A CRIMP PLUG (FOR RG-55/U, 142A/U, 223/U, 400/U)															
					CAD FILE C:/122/122430.DWG															
					DMG. NO. 122430.DWG															
					REV. A															
					SIZE A															
					SCALE NA															