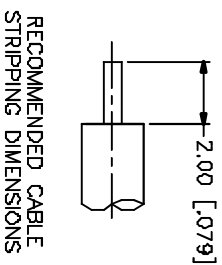
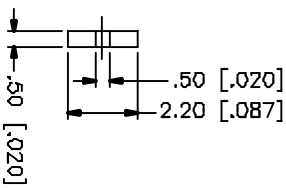
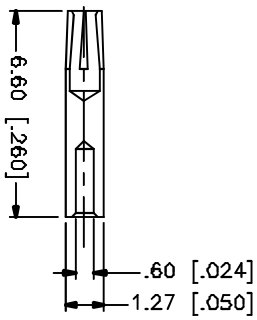
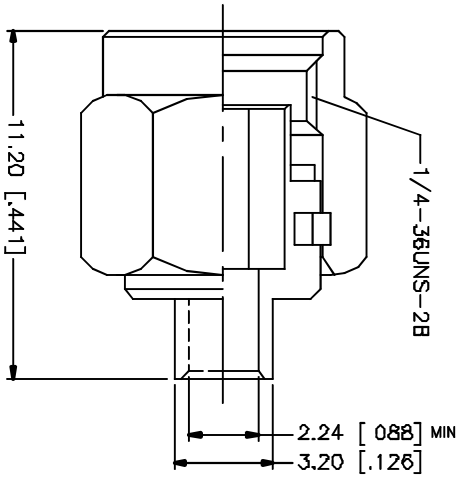


REV.	DATE	DESCRIPTION
NC	05/16/05	INITIAL RELEASE



REV.	DATE	DESCRIPTION	MATERIAL	FINISH	QTY
B					
7					
6					
5					
4			SILICONE	RED	1
3			BRASS	GOLD	1
2			TEFLON	NATURAL	1
1			BRASS	GOLD	1
DESCRIPTION					

UNLESS OTHERWISE SPECIFIED, DIMENSIONS ARE IN MILLIMETERS (DIMENSIONS IN [] ARE IN INCHES AND FOR CUSTOMER INFORMATION ONLY)	
UNLESS OTHERWISE SPECIFIED, DIMENSIONS FOR MILLIMETERS ARE:	
D.5 - 8mm ± 0.20mm	
Ø - 30mm ± 0.40mm	
30 - 120mm ± 0.50mm	
UNLESS OTHERWISE SPECIFIED, TOLERANCES FOR INCHES ARE:	
.020 - .315 - ± 0.007"	
.315 - 1.180 - ± 0.012"	
1.180 - 4.724 - ± 0.020"	
DO NOT SCALE DRAWING	

APPROVALS	DATE
DRAWN G.R.S.	05/16/05
CHECKED	
ESKED	
SHEET 1 OF 1	

CAD FILE C:/132/132101RP.DWG	DWG. NO. 132101RP.DWG	REV. NC	SIZE A	SCALE NA
------------------------------	-----------------------	---------	--------	----------

Amphenol Connex PART DESCRIPTION SMA REVERSE POLARITY SEMI-RIGID PLUG (FOR .085" , .086" CABLE) PART NO. 132101RP	
---	--