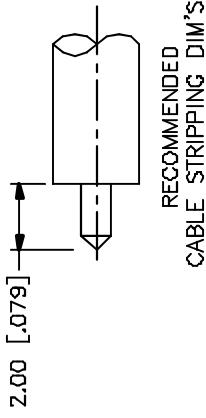
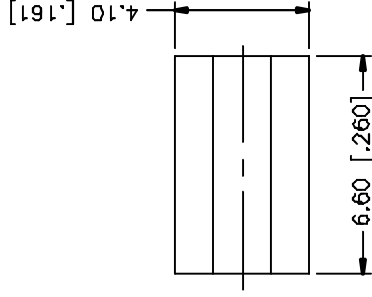
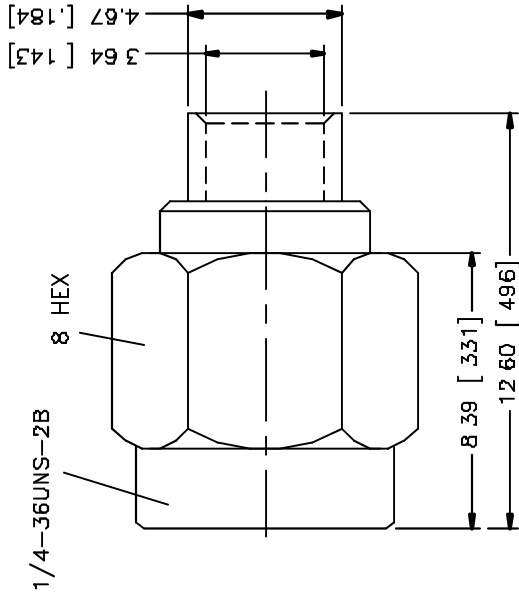
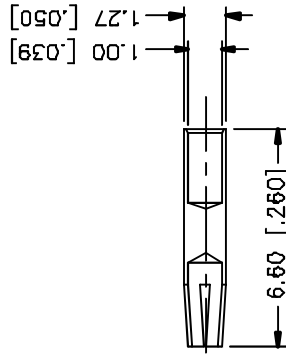


REV.	DATE	DESCRIPTION
A	03/06/05	UPDATE DRAWING FORMAT AND PART NO.



RECOMMENDED
CABLE STRIPPING DIM'S



6					
7					
8					
5					
4					
3	CONTACT PIN	BRASS	GOLD	1	QTY
2	INSULATOR BODY	TEFLON BRASS	NATURAL GOLD	1	FINISH
1	DESCRIPTION	MATERIAL		QTY	

APPROVALS	DATE
DRAWN G.R.S.	03/06/05
CHECKED	
ISSUED	
SHEET 1 OF 1	
CAD FILE C:/132/132102RP.DWG	

UNLESS OTHERWISE SPECIFIED DIMENSIONS ARE IN MILLIMETERS UNLESS INDICATED OTHERWISE IN INCHES AND THE CUSTOMER REFERENCE ONLY.
UNLESS OTHERWISE SPECIFIED TOLERANCES FOR MILLIMETERS ARE:
D.5 - .0mm ± 0.25mm
B - .30mm ± 0.40mm
30 - 120mm ± 0.50mm
UNLESS OTHERWISE SPECIFIED TOLERANCES FOR INCHES ARE:
.020 - .315 = ± 0.007"
.315 - 1.180 = ± 0.015"
1.180 - 4.724 = ± 0.020"

DO NOT SCALE DRAWING

Amphenol Connex	
PART DESCRIPTION SMA STRAIGHT PLUG - REV. POLARITY (FOR .141" SEMI RIGID CABLE)	
PART NO. 132102RP	
DWG. NO. 132102RP.DWG	SCALE NA