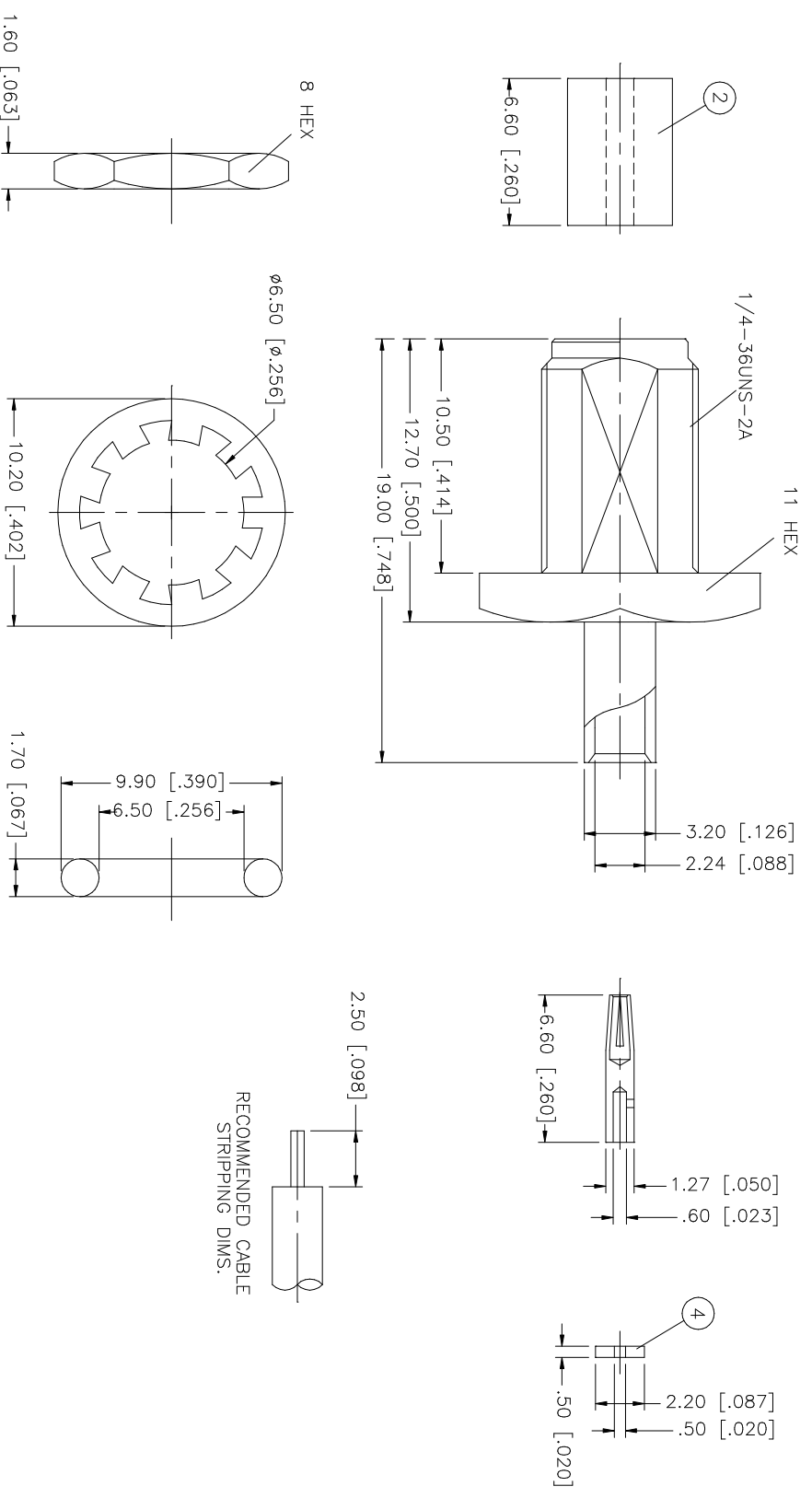


REV.	DATE	DESCRIPTION
B	01/12/98	ADD INSULATOR/ STRIPPING DIM'S
C	02/11/99	MODIFY 'O'-RING DIMENSIONS
D	04/31/03	UPDATE DRAWING FORMAT



NOTE:
 1. CONTACT PIN TO SOLDER.
 2. MAX. PANEL THICKNESS = 2.4mm

Amphenol Connex

PART DESCRIPTION
**SMA DIRECT SOLDER BULKHEAD JACK
 (FOR .085", .086" SEMI-RIGID CABLE)**

UNLESS OTHERWISE SPECIFIED DIMENSIONS ARE IN MILLIMETERS. DIMENSIONS IN [] ARE IN INCHES AND FOR CUSTOMER REFERENCE ONLY. TOLERANCES FOR MILLIMETERS ARE:	APPROVALS	DATE	DWG. NO.	REV.	SIZE	SCALE
0.5 - 8mm ± 0.20mm	DRAWN G.R.S.	04/31/03	1321105.DWG	D	A	NA
8 - 30mm ± 0.40mm						
30 - 120mm ± 0.50mm	CHECKED					
UNLESS OTHERWISE SPECIFIED TOLERANCES FOR INCHES ARE:	ISSUED					
.020 - .315 = ± 0.007"	SHEET 1 OF 1					
.315 - 1.180 = ± 0.015"						
1.180 - 4.724 = ± 0.020"						
UNLESS OTHERWISE SPECIFIED DIMENSIONS ARE IN MILLIMETERS. DIMENSIONS IN [] ARE IN INCHES AND FOR CUSTOMER REFERENCE ONLY. TOLERANCES FOR MILLIMETERS ARE:						
0.5 - 8mm ± 0.20mm						
8 - 30mm ± 0.40mm						
30 - 120mm ± 0.50mm						
UNLESS OTHERWISE SPECIFIED TOLERANCES FOR INCHES ARE:						
.020 - .315 = ± 0.007"						
.315 - 1.180 = ± 0.015"						
1.180 - 4.724 = ± 0.020"						
8 FERRULE	BRASS	GOLD				
7 LOCK WASHER	BRASS	GOLD				
6 GASKET	SILICONE	RED				
4 INSULATOR	TEFLON	NATURAL				
3 CONTACT PIN	BER. COPPER	GOLD				
2 INSULATOR	TEFLON	NATURAL				
1 BODY	BRASS	GOLD				
DESCRIPTION	MATERIAL	FINISH	QTY	DO NOT SCALE DRAWING	CAD FILE	