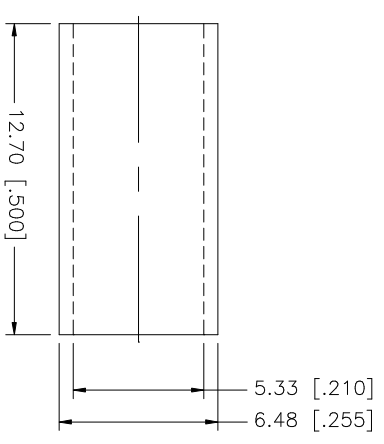
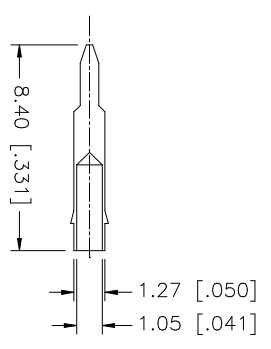
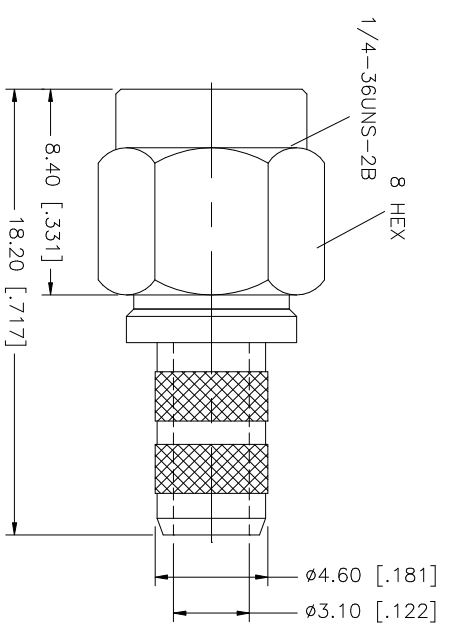
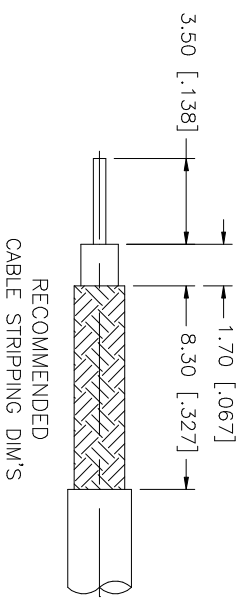


REV.	DATE	DESCRIPTION
NC	01/29/03	INITIAL RELEASE



NOTE:
1. CRIMPED FERRULE
HEX CRIMP SIZE .213"

UNLESS OTHERWISE SPECIFIED DIMENSIONS ARE IN MILLIMETERS DIMENSIONS IN [] ARE IN INCHES AND FOR CUSTOMER REFERENCE ONLY.		UNLESS OTHERWISE SPECIFIED TOLERANCES FOR MILLIMETERS ARE:		UNLESS OTHERWISE SPECIFIED TOLERANCES FOR INCHES ARE:		APPROVALS		DATE		PART DESCRIPTION	
8						DRAWN	G.R.S.	01/29/03		Amphenol Connex	
7						CHECKED				SMA CRIMP PLUG	
6	FERRULE	COPPER	GOLD	0.5 - 8mm ± 0.20mm		ISSUED				(FOR RG-58C/U, 58/U CABLE)	
5	GASKET	SILICONE	RED	8 - 30mm ± 0.40mm		SHEET	1 OF 1			1 32113	
4	CONTACT PIN	BRASS	GOLD	30 - 120mm ± 0.50mm		DWG. NO.				1 32113.DWG	
3	RETAINER RING	BR. COPPER	NATURAL	UNLESS OTHERWISE SPECIFIED TOLERANCES FOR INCHES ARE:		REV.	NC			SCALE NA	
2	INSULATOR	TEFLON	NATURAL	.020 - .315 = ± 0.007"		SIZE	A				
1	SHELL/BODY	BRASS	GOLD	.315 - 1.180 = ± 0.015" 1.180 - 4.724 = ± 0.020"							
DESCRIPTION		MATERIAL	FINISH	QTY	DO NOT SCALE DRAWING		CAD FILE		C:/132/132113.DWG		