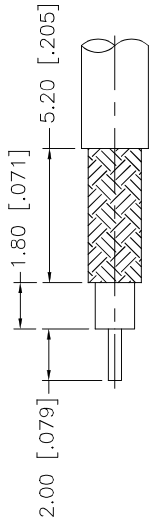
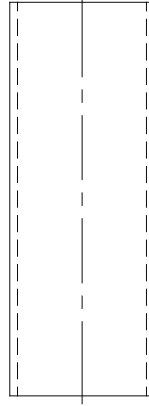
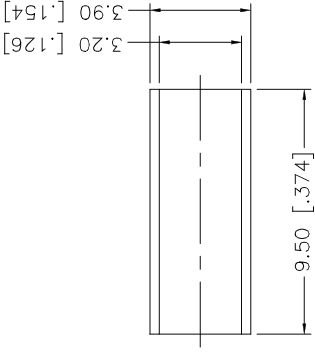
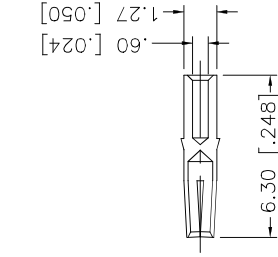
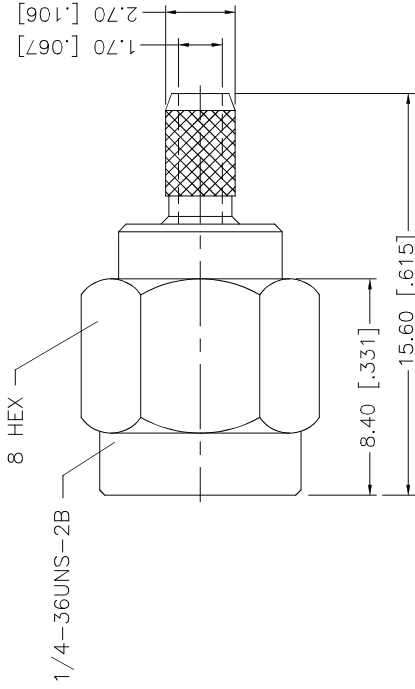


REV.	DATE	ECR NO.	DESCRIPTION
A	01/22/04	-	UPDATE DRAWING FORMAT
B	04/23/08	100009	MODIFY BARREL O.D., FERRULE O.D. AND I.D.



RECOMMENDED
CABLE STRIPPING DIM'S



NOTES:

1. CRIMPED FERRULE HEX CRIMP SIZE .128"
2. CONTACT PIN TO SOLDER

APPROVALS		DATE	
DRAWN	GRS	04/23/08	
CHECKED			
ISSUED			
SHEET	1 OF 1		
CAD FILE C:/132/132114RP.DWG			
UNLESS OTHERWISE SPECIFIED DIMENSIONS ARE IN MILLIMETERS UNLESS OTHERWISE SPECIFIED DIMENSIONS ARE IN INCHES AND FOR CUSTOMER REFERENCE ONLY.			
UNLESS OTHERWISE SPECIFIED TOLERANCES FOR MILLIMETERS ARE:			
0.5 - 8mm	± 0.20mm		
8 - 30mm	± 0.40mm		
30 - 120mm	± 0.50mm		
UNLESS OTHERWISE SPECIFIED TOLERANCES FOR INCHES ARE:			
.020 - .315	± 0.007"		
.315 - 1.180	± 0.015"		
1.180 - 4.724	± 0.020"		
DO NOT SCALE DRAWING			
DESCRIPTION	MATERIAL	FINISH	QTY
HEAT SHRINK TUBING	COPPER	GOLD	1
FERRULE	BER. COPPER	GOLD	1
CONTACT PIN	PTFE	NATURAL	1
INSULATOR BODY	BRASS	GOLD	1
DESCRIPTION		MATERIAL	FINISH
SMA REVERSE POLARITY CRIMP PLUG (FOR RG-174/U, 188A/U, 316/U CABLE)			
PART DESCRIPTION		PART NO.	
SMA REVERSE POLARITY CRIMP PLUG (FOR RG-174/U, 188A/U, 316/U CABLE)		132114RP	
DWG. NO.		REV. B	SCALE NA
132114RP.DWG			

Amphenol Connex