

Distributed by:

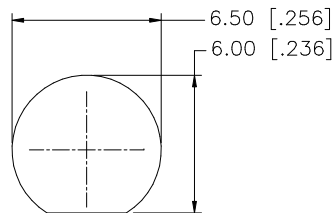
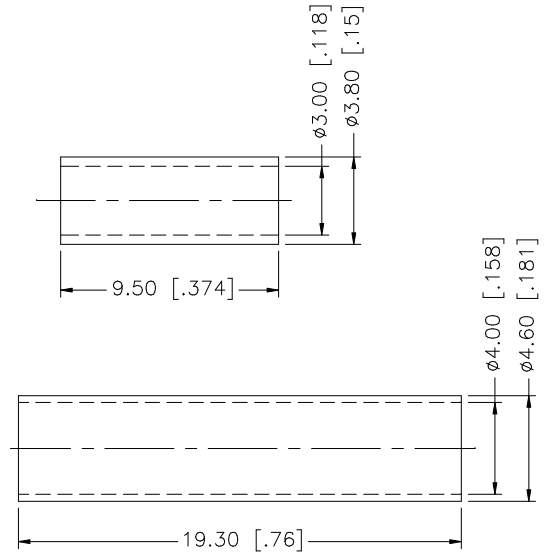
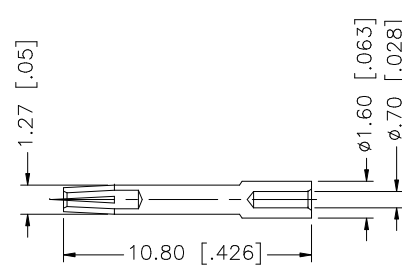
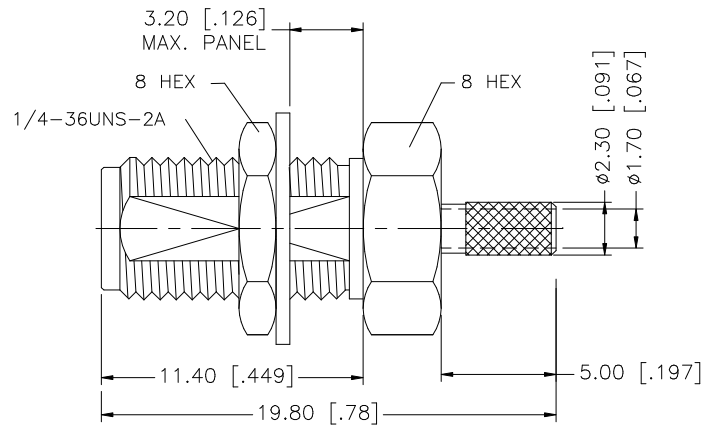
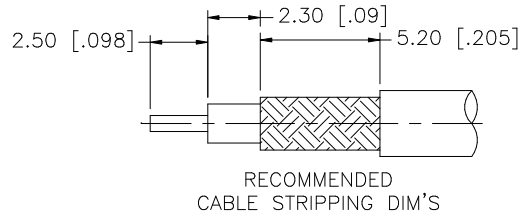
JAMECO[®]
ELECTRONICS

www.Jameco.com ♦ 1-800-831-4242

The content and copyrights of the attached
material are the property of its owner.

Jameco Part Number 296331

REV.	DATE	DESCRIPTION
A	01/29/00	UPDATE FERRULE
B	01/02/01	MODIFY BARREL / ADD HEAT SHRINK
C	04/31/03	UPDATE DRAWING FORMAT



RECOMMENDED
MOUNTING HOLES

CRIMP NOTES:

1. CRIMPED FERRULE
HEX CRIMP SIZE .128"
2. CONTACT PIN TO SOLDER
3. MAX. PANEL THICKNESS = 3.2mm

DESCRIPTION	MATERIAL	FINISH	QTY	DO NOT SCALE DRAWING	APPROVALS	DATE	Amphenol Connex								
8							<p>UNLESS OTHERWISE SPECIFIED DIMENSIONS ARE IN MILLIMETERS. DIMENSIONS IN [] ARE IN INCHES AND FOR CUSTOMER REFERENCE ONLY.</p> <p>UNLESS OTHERWISE SPECIFIED TOLERANCES FOR MILLIMETERS ARE: 0.5 - 8mm ± 0.20mm 8 - 30mm ± 0.40mm 30 - 120mm ± 0.50mm</p> <p>UNLESS OTHERWISE SPECIFIED TOLERANCES FOR INCHES ARE: .020 - .315 = ± 0.007" .315 - 1.180 = ± 0.015" 1.180 - 4.724 = ± 0.020"</p>								
7	HEAT SHRINK TUBING				DRAWN	G.R.S.					04/31/03	PART DESCRIPTION			
6	FERRULE	COPPER	GOLD	1	CHECKED							SMA BULKHEAD CRIMP JACK (FOR RG-174/U, 188A/U, 316/U CABLE)			
5	LOCK WASHER	BRASS	GOLD	1	ISSUED							PART NO.			
4	HEX NUT	BRASS	GOLD	1	SHEET	1 OF 1						132119			
3	CONTACT PIN	BER. COPPER	GOLD	1								DWG. NO. 132119.DWG			
2	INSULATOR	TEFLON	NATURAL	1								REV. C			
1	BODY	BRASS	GOLD	1								SIZE A			
								SCALE NA							