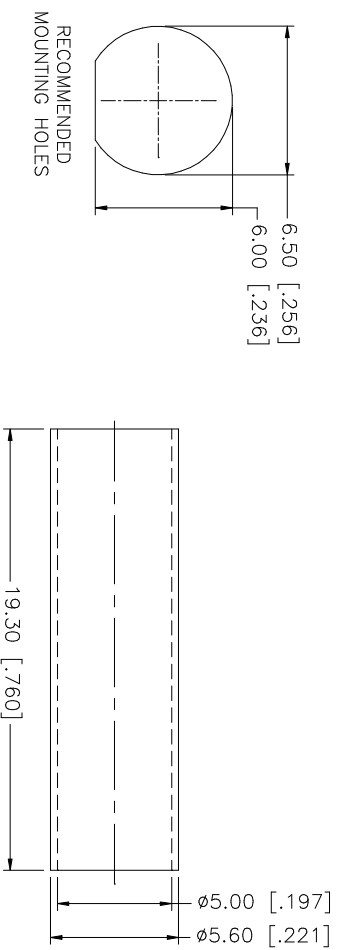
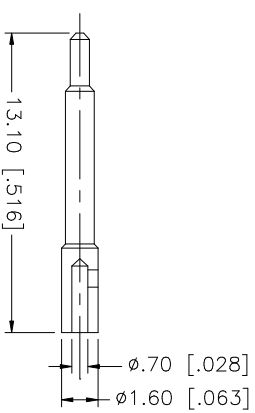
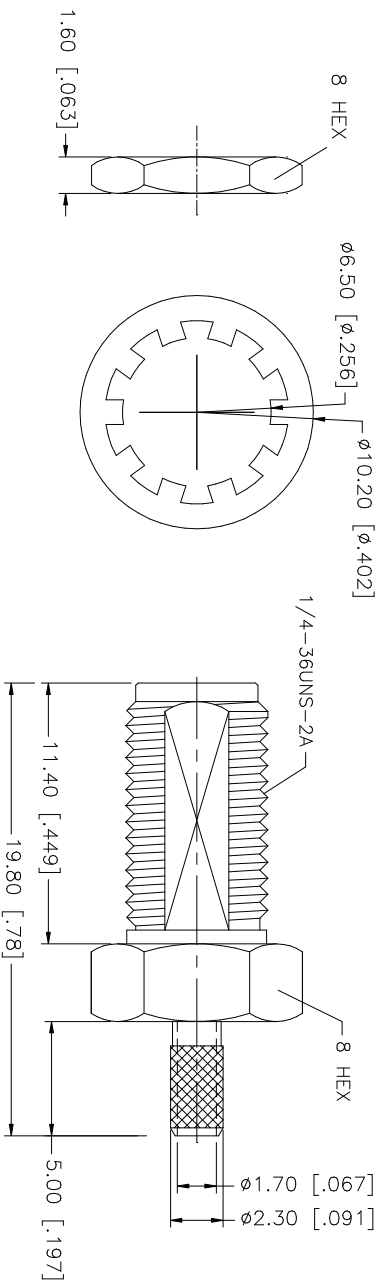
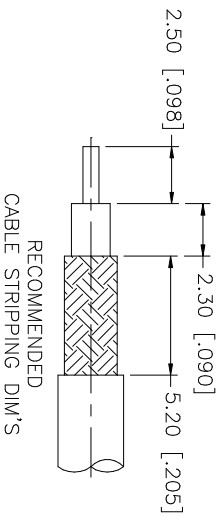
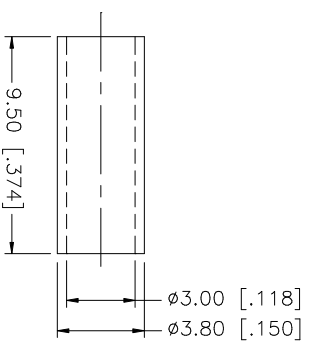


| REV. | DATE |
|------|----------|
| A | 01/23/04 |

DESCRIPTION
UPDATE DRAWING FORMAT



CRIMP NOTES:
1. CRIMPED FERRULE
HEX CRIMP SIZE .128"



| 8 | HEAT SHRINK TUBING | | | | | | | | | |
|-------------|--------------------|----------|---------|-----|----------------------|---------------------|-----------|----------|--|--|
| 7 | FERRULE | COPPER | GOLD | 1 | | | | | | |
| 5 | LOCK WASHER | BRASS | GOLD | 1 | | | | | | |
| 4 | HEX NUT | BRASS | GOLD | 1 | | | | | | |
| 3 | CONTACT PIN | BRASS | GOLD | 1 | | | | | | |
| 2 | INSULATOR | TEFLON | NATURAL | 1 | | | | | | |
| 1 | BODY | BRASS | GOLD | 1 | | | | | | |
| DESCRIPTION | | MATERIAL | FINISH | QTY | DO NOT SCALE DRAWING | CAD FILE | APPROVALS | DATE | PART DESCRIPTION | |
| | | | | | | C:/132/132119RP.DWG | G.R.S. | 01/23/04 | <h1>Amphenol Connex</h1> <p>SMA REVERSE POLARITY BULKHEAD CRIMP JACK</p> | |
| | | | | | | | | | <p>DWG. NO. 132119RP.DWG</p> <p>REV. A</p> <p>SIZE A</p> <p>SCALE NA</p> | |

UNLESS OTHERWISE SPECIFIED DIMENSIONS ARE IN MILLIMETERS DIMENSIONS IN [] ARE IN INCHES AND FOR CUSTOMER REFERENCE ONLY.

UNLESS OTHERWISE SPECIFIED TOLERANCES FOR MILLIMETERS ARE:
0.5 - 8mm ± 0.20mm
8 - 30mm ± 0.40mm
30 - 120mm ± 0.50mm

UNLESS OTHERWISE SPECIFIED TOLERANCES FOR INCHES ARE:
.020 - .315 ± 0.007"
.315 - 1.180 ± 0.015"
1.180 - 4.724 ± 0.020"