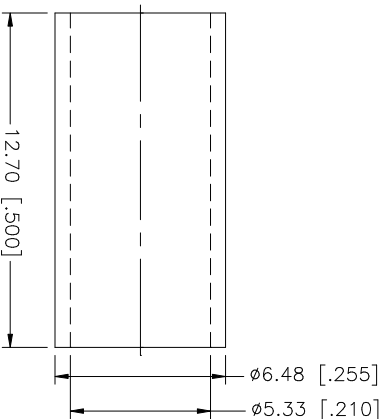
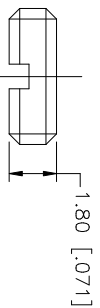
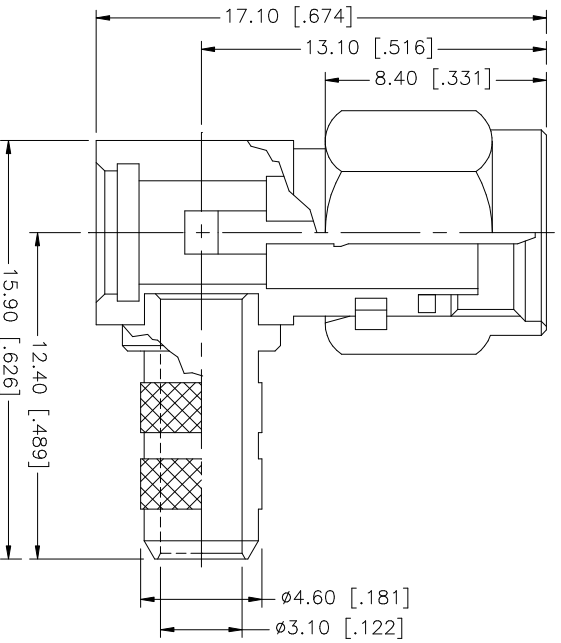
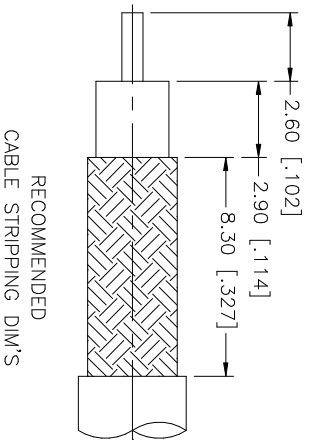


REV.	DATE	DESCRIPTION
NC	02/24/03	INITIAL RELEASE



NOTE:
 1. CRIMPED FERRULE
 HEX CRIMP SIZE .213"
 2. CONTACT PIN TO SOLDER

UNLESS OTHERWISE SPECIFIED DIMENSIONS ARE IN MILLIMETERS. DIMENSIONS IN [] ARE IN INCHES AND FOR CUSTOMER REFERENCE ONLY.	UNLESS OTHERWISE SPECIFIED TOLERANCES FOR MILLIMETERS ARE:		UNLESS OTHERWISE SPECIFIED TOLERANCES FOR INCHES ARE:		DO NOT SCALE DRAWING	CAD FILE	DWG. NO.	REV.	SIZE	SCALE
8			0.5 - 8mm ± 0.20mm	.020 - .315 = ± 0.007"		APPROVALS	DATE			
7			8 - 30mm ± 0.40mm	.315 - 1.180 = ± 0.015"		DRAWN	G.R.S.	02/24/03		
6			30 - 120mm ± 0.50mm	1.180 - 4.724 = ± 0.020"		CHECKED				
5	FERRULE	COPPER				ISSUED				
4	COVER	BRASS				SHEET	1 OF 1			
3	CONTACT PIN	BRASS				PART NO.				
2	INSULATOR	TEFLON								
1	HOUSING W/ BARREL	BRASS								
	DESCRIPTION	MATERIAL	FINISH	QTY						

Amphenol Connex

PART DESCRIPTION
 SMA R/A CRIMP PLUG
 (FOR RG-141/U CABLE)

PART NO.
 132122

DWG. NO. 132122.DWG REV. NC SIZE A SCALE NA