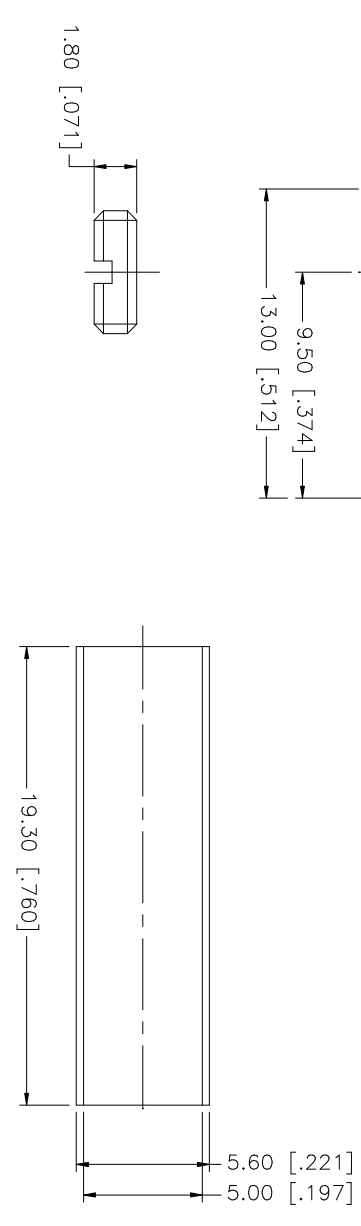
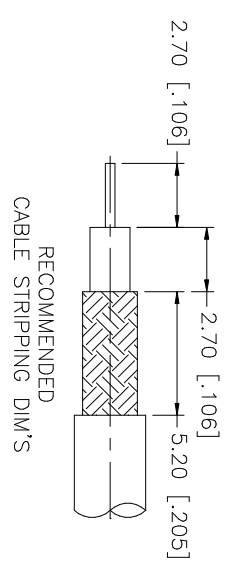
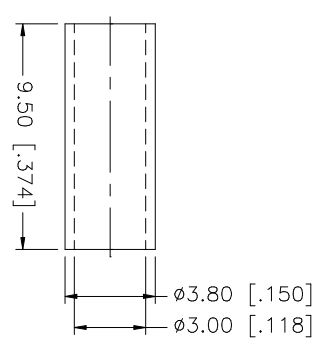
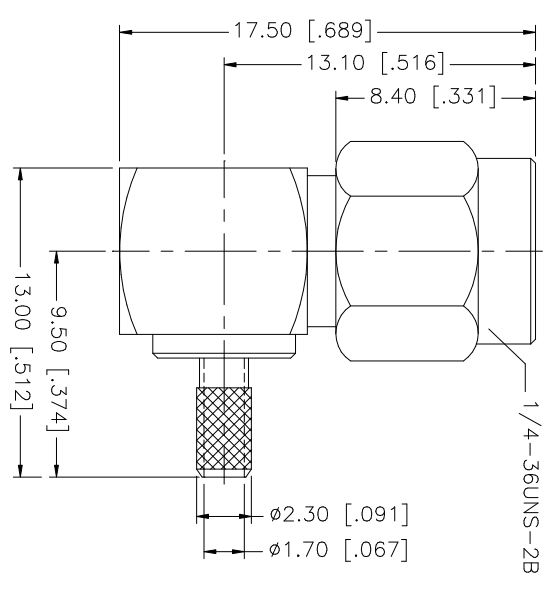


REV.	DATE	DESCRIPTION
A	04/31/03	UPDATE DRAWING FORMAT



CRIMP NOTES:
 1. CRIMPED FERRULE
 HEX CRIMP SIZE .128"

Amphenol Connex

PART DESCRIPTION
SMA R/A CRIMP PLUG
 (FOR RG-174/U, 188A/U, 316/U CABLE)

UNLESS OTHERWISE SPECIFIED, DIMENSIONS ARE IN MILLIMETERS. DIMENSIONS IN [] ARE IN INCHES AND FOR CUSTOMER REFERENCE ONLY. TOLERANCES FOR MILLIMETERS ARE:	UNLESS OTHERWISE SPECIFIED, DIMENSIONS ARE IN INCHES. DIMENSIONS IN [] ARE IN MILLIMETERS. DIMENSIONS IN [] ARE IN INCHES AND FOR CUSTOMER REFERENCE ONLY. TOLERANCES FOR MILLIMETERS ARE:	APPROVALS	DATE	PART NO.	DWG. NO.	REV.	SIZE	SCALE
0.5 - 8mm ± 0.20mm	0.020 - .315 = ± 0.007"	DRAWN G.R.S.	04/31/03	132123	132123.DWG	NC	A	NA
8 - 30mm ± 0.40mm	.315 - 1.180 = ± 0.015"							
30 - 120mm ± 0.50mm	1.180 - 4.724 = ± 0.020"	CHECKED						
ISSUED								
SHEET		1 OF 1						
DESCRIPTION	MATERIAL	FINISH	QTY	DO NOT SCALE DRAWING				
HEAT SHRINK TUBE	COPPER	GOLD	1					
FERRULE	SILICONE	RED	1					
GASKET	BRASS	GOLD	1					
CONTACT PIN	TEFLON	NATURAL	1					
INSULATOR	BRASS	GOLD	1					
HOUSING W/BARREL	BRASS	GOLD	1					
SHELL								

DESCRIPTION	MATERIAL	FINISH	QTY
HEAT SHRINK TUBE	COPPER	GOLD	1
FERRULE	SILICONE	RED	1
GASKET	BRASS	GOLD	1
CONTACT PIN	TEFLON	NATURAL	1
INSULATOR	BRASS	GOLD	1
HOUSING W/BARREL	BRASS	GOLD	1
SHELL			