

[Home](#) / 142212



142212

SMB Str Solder Pl for .085 Semi-Rigid, 50 Ohm

[Email to a Friend](#)

[Add to Parts List](#)

[Add to Compare](#)

Product Downloads

 [142212 Customer Drawing](#)

 [142212 IGES File](#)

Product Description

SMB Straight Solder Plug for .085 Semi-Rigid, 50 Ohm

Product Specifications

Gender	Plug
Orientation	Straight
Cable Group	11
Insulator Material	PTFE
Body Material	Brass
Body Finish	Gold
Contact Material	Brass
Contact Finish	Gold
Termination Style	Cable - Solder
Impedance	50 Ohm
Contact Termination	Solder
Coupling Mechanism	Push-on

Polarity	Standard
Thread Direction	Standard
Max Freq (Ghz)	4.0
Ext Dielectric	No
Isolated	No
RoHS Compliant	Yes
REACH Compliant	Yes

Environmental Compliance

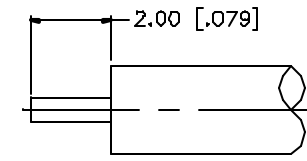
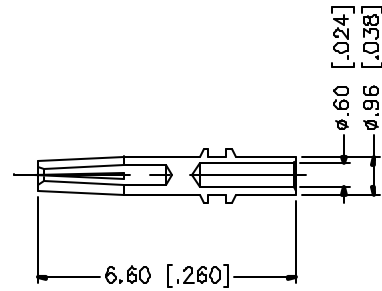
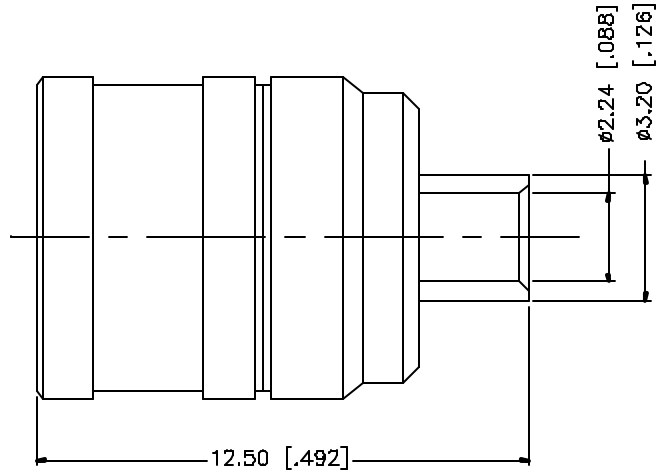
This item is RoHS Compliant. [Download RoHS Certificate.](#)

For information on environmental compliance, email us at compliance@amphenolconnex.com.

[About Us](#) | [Contact Us](#) | [Terms and Conditions](#) | [Extranet Log-In](#) | [!\[\]\(0f848bbd71cef6b345273b16f905912a_img.jpg\) Follow Us](#) | [!\[\]\(d873c0073cfd3b74a7c9b5ca09bad0c7_img.jpg\) Like Us](#) | [!\[\]\(9126fbb278b6412ee8b215b5e71dadba_img.jpg\) RSS](#)

© 2011 Amphenol Connex. All Rights Reserved.

REV.	DATE	DESCRIPTION
A	03/27/05	UPDATE DRAWING FORMAT



RECOMMENDED
CABLE STRIPPING DIM'S

8					<p>UNLESS OTHERWISE SPECIFIED DIMENSIONS ARE IN MILLIMETERS. DIMENSIONS IN () ARE IN INCHES AND FOR CUSTOMER REFERENCE ONLY.</p> <p>UNLESS OTHERWISE SPECIFIED TOLERANCES FOR MILLIMETERS ARE: 0.5 - 8mm ± 0.20mm 8 - 30mm ± 0.40mm 30 - 120mm ± 0.50mm</p> <p>UNLESS OTHERWISE SPECIFIED TOLERANCES FOR INCHES ARE: .020 - .315 = ± 0.007" .315 - 1.180 = ± 0.015" 1.180 - 4.724 = ± 0.020"</p> <p>DO NOT SCALE DRAWING</p>	APPROVALS	DATE	<h1 style="color: blue; text-align: center;">Amphenol Connex</h1>	
7				DRAWN		G.R.S.	03/27/05		<p>PART DESCRIPTION</p> <h2 style="text-align: center;">SMB DIRECT SOLDER PLUG (FOR .085", .086")</h2>
6				CHECKED					
5				ISSUED					
4				SHEET		1 OF 1			
3	CONTACT PIN	BRASS	GOLD	1			PART NO.	142212	
2	INSULATOR	TEFLON	NATURAL	1			DWG. NO.	142212.DWG	
1	BODY	BRASS	GOLD	1			REV.	A	
	DESCRIPTION	MATERIAL	FINISH	QTY			SIZE	A	
							SCALE	NA	

AMPHENOL RF

Amphenol Connex
5069 Maureen
Lane Moorpark, CA
93021 USA
(800) 942-6639
www.amphenolrf.com

CERTIFICATE OF COMPLIANCE

It is hereby certified that the part number listed below complies to the RoHS Directive 2002/95/EC dated 1/27/03 and PFOS directive 2006/122/EC dated 12/26/06

(PFOS) 2006/122/EC Dated 12/12/2006
Compliant as of 6/27/2008
(ROHS) 2002/95/EC dated 1/27/03
Compliant as of 09/06/07

142212 SMB ST CRIMP PLUG .085S/R GLD
Part Number

Sheila Barrett
Authorized by Sr. Quality Engineer

Fred Silva
Authorized by Director of Quality

03/20/14
Date



Global RF Solutions