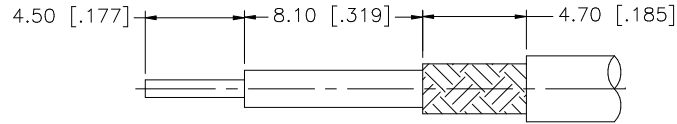
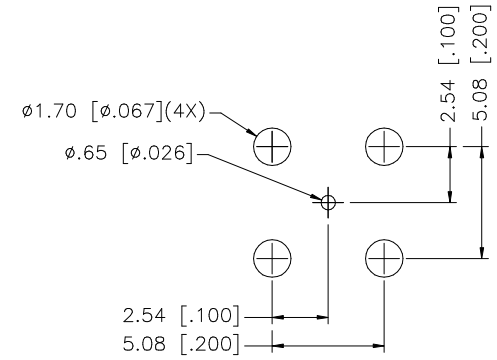
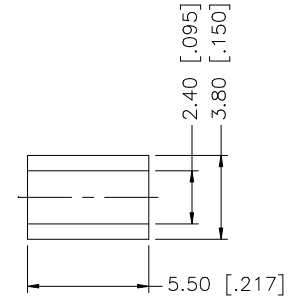
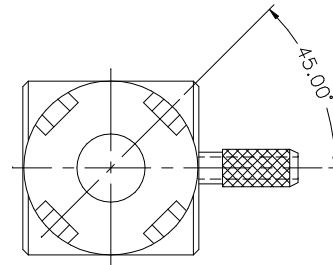
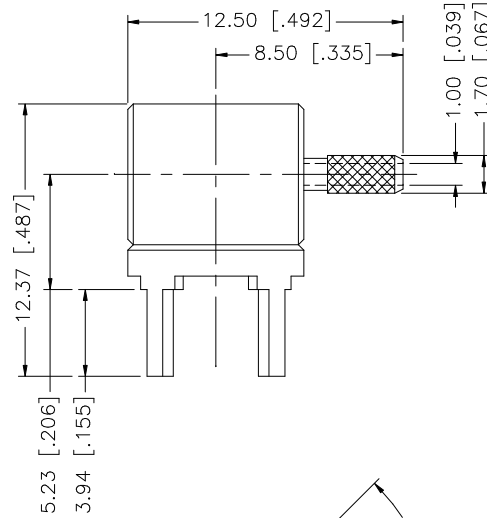
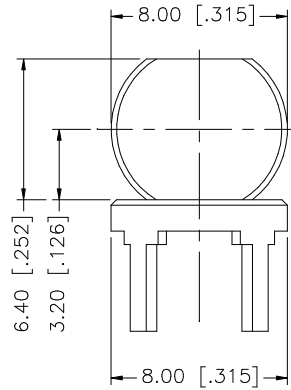


REV.	DATE	DESCRIPTION
NC	01/04/00	INITIAL RELEASE
A	04/06/06	UPDATE DRAWING FORMAT



RECOMMENDED
CABLE STRIPPING DIM'S



RECOMMENDED
MOUNTING HOLES

8				
7				
6				
5				
4				
3	FERRULE	COPPER	GOLD	1
2	BODY	BRASS	GOLD	1
1	BARREL	BRASS	GOLD	1
	DESCRIPTION	MATERIAL	FINISH	QTY

UNLESS OTHERWISE SPECIFIED DIMENSIONS ARE IN MILLIMETERS. DIMENSIONS IN [] ARE IN INCHES AND FOR CUSTOMER REFERENCE ONLY.

UNLESS OTHERWISE SPECIFIED TOLERANCES FOR MILLIMETERS ARE:
0.5 - 8mm ± 0.20mm
8 - 30mm ± 0.40mm
30 - 120mm ± 0.50mm

UNLESS OTHERWISE SPECIFIED TOLERANCES FOR INCHES ARE:
.020 - .315 = ± 0.007"
.315 - 1.180 = ± 0.015"
1.180 - 4.724 = ± 0.020"

DO NOT SCALE DRAWING

APPROVALS	DATE
DRAWN G.R.S.	04/06/06
CHECKED	
ISSUED	
SHEET 1 OF 1	
CAD FILE	C:/142/142270.DWG

Amphenol Connex

PART DESCRIPTION			
R/A PCB CABLE TERMINATION (FOR RG-178B/U, 196A/U CABLE)			
PART NO. 142270			
DWG. NO.	142270.DWG	REV.	A
SIZE	A	SCALE	NA