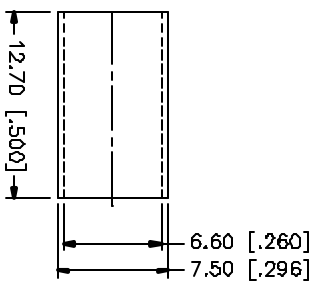
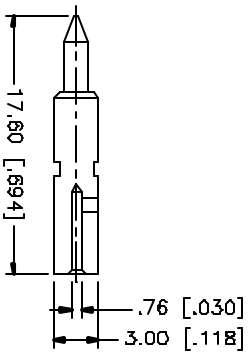
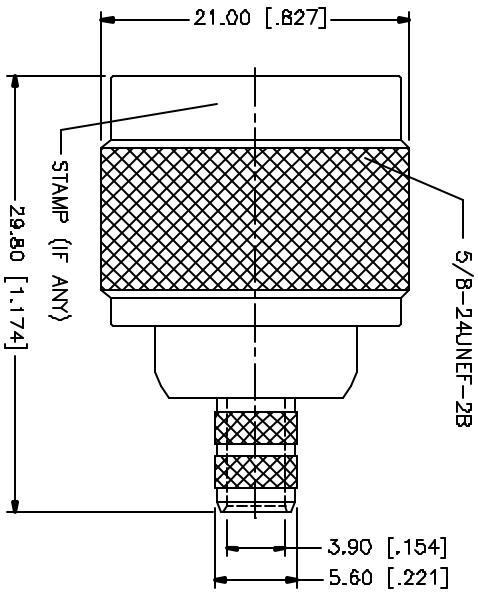
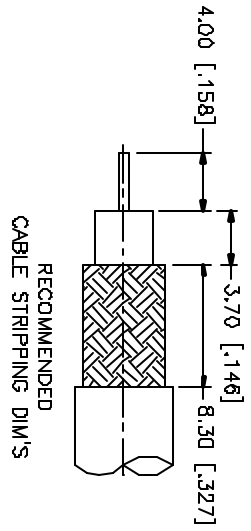


REV.	DATE	DESCRIPTION
NC	05/01/04	INITIAL RELEASE



- NOTE:
1. CRIMPED FERRULE  
HEX CRIMP SIZE .235"
  2. CONTACT PIN TO SOLDER

NO	DESCRIPTION	MATERIAL	FINISH	QTY	UNLESS OTHERWISE SPECIFIED DIMENSIONS ARE IN MILLIMETERS. DIMENSIONS IN [ ] ARE IN INCHES AND FOR QUOTE REMAINS QUOTE. DIMENSIONS FOR MOUNTING ARE: 0.5 - .8mm ± 0.20mm B - .30mm ± 0.40mm 3D - .120mm ± 0.50mm UNLESS OTHERWISE SPECIFIED TOLERANCES FOR HOLE ARE: .020 - .315 = ± 0.007" .315 - 1.180 = ± 0.015" 1.180 - 4.724 = ± 0.020"	DO NOT SCALE DRAWING	APPROVALS	DATE	PART DESCRIPTION	DWG. NO.	REV.	SIZE	SCALE				
1	FERRULE	COPPER	NEXCOTE	1			DRAWN	G.R.S.	05/01/04	<h1 style="text-align: center;">Amphenol Connex</h1> <p style="text-align: center;">N CRIMP PLUG</p> <p style="text-align: center;">172101</p>							
2	CONTACT PIN	BRASS	SOLD	1			CHECKED										
3	INSULATOR	TEFLON	NATURAL	1			ISSUED										
4	BODY	BRASS	NEXCOTE	1			SHEET	1 OF 1									
	DESCRIPTION	MATERIAL	FINISH	QTY				CAD FILE	C:/172/172101.DWG	DWG. NO.	172101.DWG	REV.	NC	SIZE	A	SCALE	NA