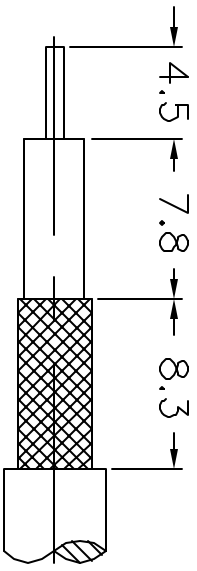
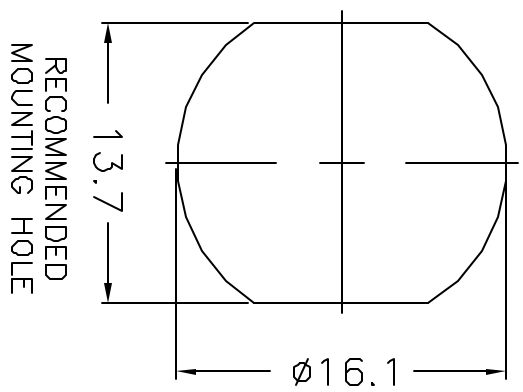


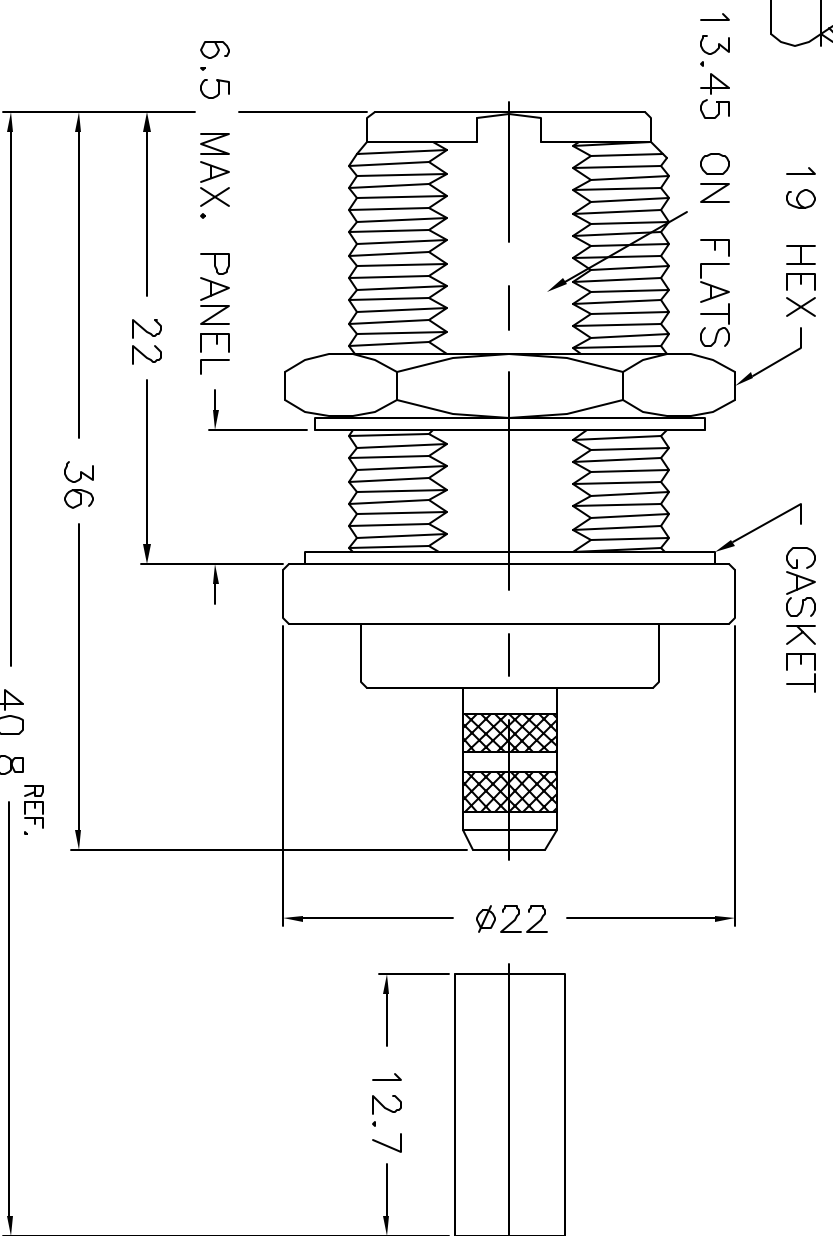
REVISIONS		DWG. NO.	SH	REV.
ZONE	LTR	DESCRIPTION	DATE	APPROVED



RECOMMENDED
CABLE STRIPPING DIM'S



RECOMMENDED
MOUNTING HOLE



DESCRIPTION	MATERIAL	FINISH	QTY.
1 BODY	BRASS	NICKEL	1
2 INSULATOR	TEFLON	NATURAL	1
3 CONTACT	PHOS. BRONZE	GOLD	1

DIMENSIONS ARE IN MILLIMETERS UNLESS OTHERWISE SPECIFIED TOLERANCES ARE		APPROVALS	DATE
0.5-8	± 0.2	DRAWN B. BURTON	7/31/96
8-30	± 0.4	CHECKED	
30-120	± 0.8	ISSUED	
120-315	± 1		
315-1000	± 1.6		
1000-2000	± 2.4		
DO NOT SCALE DRAWING			

connex
Connector Corporation

TITLE: N STRAIGHT GRIMP JACK - CAPTIVE CONTACT
8/8A/215/214/11/11A CABLE 50 OHM

SIZE: A
FORM NO.: 99001
DWG. NO.: 172108 .DWG

SCALE: 3:1
PART NO.: 172108
SHEET: 1 OF 1