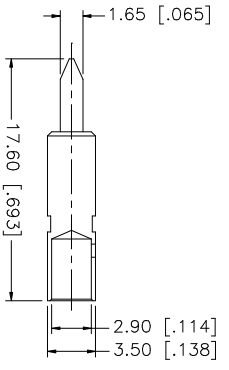
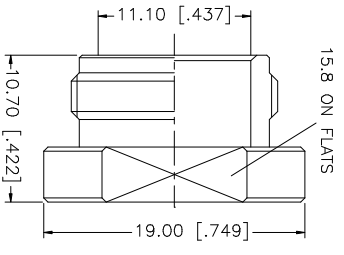
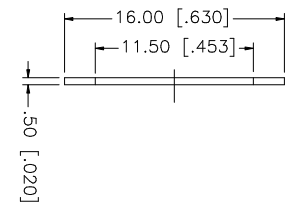
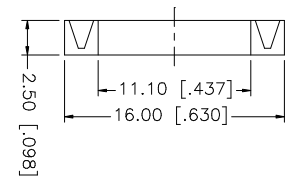
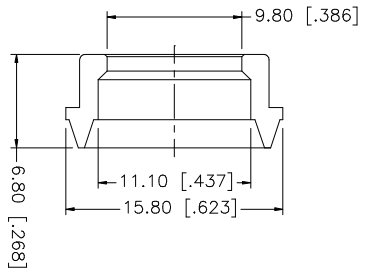
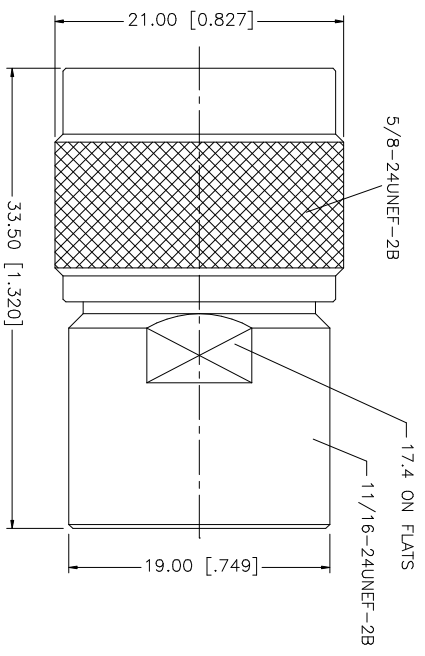
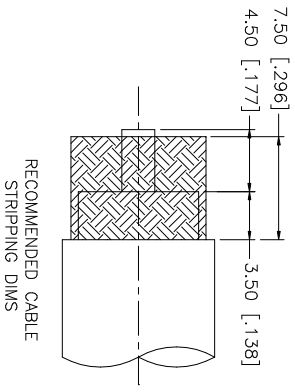


REV.	DATE	DESCRIPTION
A	01/03/04	UPDATE DRAWING FORMAT



NOTE:
1. CRIMPED CONTACT PIN
HEX CRIMP SIZE .118"

QTY	FINISH	MATERIAL	DESCRIPTION
1	NEXCOTE	BRASS	8 NUT
2	NEXCOTE	BRASS	6 WASHER
1	RED	SILICONE	5 GASKET
1	NEXCOTE	BRASS	4 BRAID CLAMP
1	GOLD	BRASS	3 CONTACT PIN
1	NATURAL	TEFLON	2 INSULATOR
1	NEXCOTE	BRASS	1 BODY

APPROVALS	DATE	PART DESCRIPTION
DRAWN G.R.S.	01/30/04	N CLAMP PLUG
CHECKED		
ISSUED		

CAD FILE	C:/172/172113H243.DWG	DWG NO.	172113H243.DWG	REV.	A	SIZE	A	SCALE	NA
----------	-----------------------	---------	----------------	------	---	------	---	-------	----

UNLESS OTHERWISE SPECIFIED DIMENSIONS ARE IN MILLIMETERS. DIMENSIONS IN [] ARE IN INCHES AND FOR CUSTOMER REFERENCE ONLY.	
UNLESS OTHERWISE SPECIFIED TOLERANCES FOR MILLIMETERS ARE:	
0.5 - 8mm	± 0.20mm
8 - 30mm	± 0.40mm
30 - 120mm	± 0.50mm
UNLESS OTHERWISE SPECIFIED TOLERANCES FOR INCHES ARE:	
.020 - .315	± 0.007"
.315 - 1.180	± 0.015"
1.180 - 4.724	± 0.020"

DO NOT SCALE DRAWING	
----------------------	--

Amphenol Connex