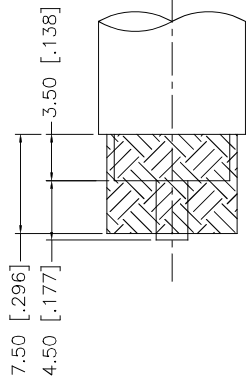
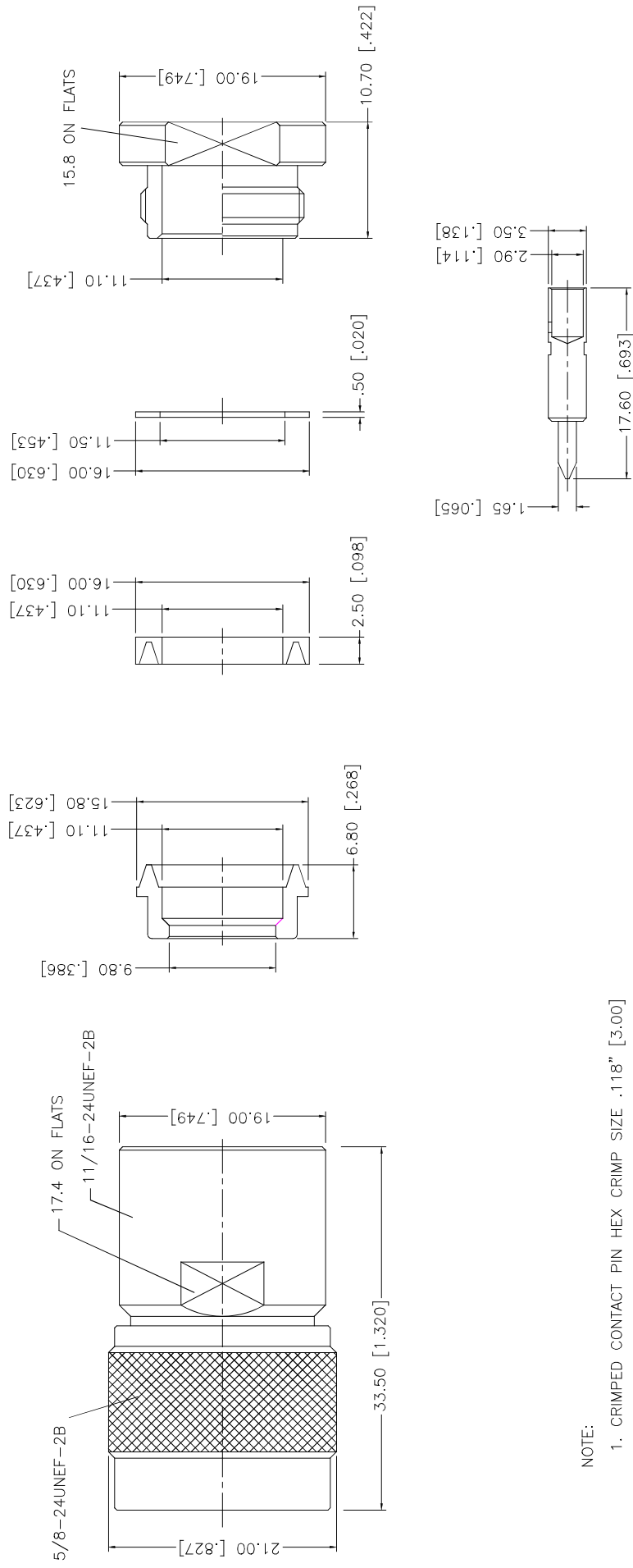


REV.	DATE	ECR NO.	DESCRIPTION
A	01/03/04	-	UPDATE DRAWING FORMAT
B	12/03/08	-	ADD CABLE CALLOUT TO PART DESCRIPTION



RECOMMENDED CABLE STRIPPING DIMS



NOTE:
1. CRIMPED CONTACT PIN HEX CRIMP SIZE .118" [3.00]

UNLESS OTHERWISE SPECIFIED DIMENSIONS ARE IN INCHES AND FOR CUSTOMER REFERENCE ONLY.		APPROVALS	DATE
8	NUT	GRS	12/03/08
7	BRASS	DRAWN	
6	WASHER	CHECKED	
5	GASKET	ISSUED	
4	BRAID CLAMP	SHEET	1 OF 1
3	CONTACT PIN		
2	INSULATOR		
1	BODY		
	DESCRIPTION	DO NOT SCALE DRAWING	
	MATERIAL	CAD FILE C:/172/172113H243.DWG	
	FINISH	DWG. NO. 172113H243.DWG	
	QTY	REV. B	SCALE NA
		SIZE A	
<h1>Amphenol Connex</h1> <p>N CLAMP PLUG (FOR LMR400, B9913 CABLE)</p> <p>PART NO. 172113H243</p>			