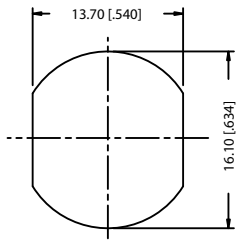
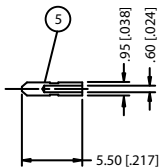
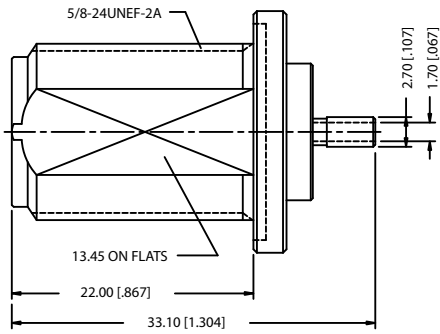
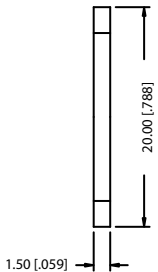
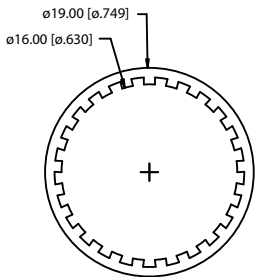
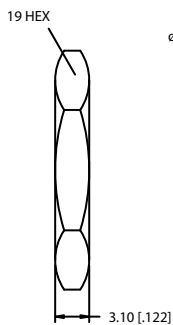
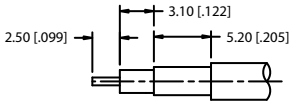


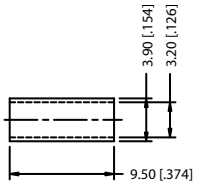
| | | |
|------|----------|-----------------------|
| REV. | DATE | DESCRIPTION |
| A | 04/31/03 | UPDATE DRAWING FORMAT |



RECOMMENDED MOUNTING HOLE DIMENSIONS



RECOMMENDED CABLE STRIPPING DIM'S



- NOTES:
1. CRIMPED FERRULE
HEX CRIMP SIZE .128"
 2. CRIMPED CONTACT PIN
SQ. CRIMP SIZE 0.7mm OR SOLDER
 3. MAX. PANEL THICKNESS = 6.5mm

| | | | | |
|---|-------------|--------------|---------|-----|
| 8 | | | | |
| 7 | FERRULE | COPPER | NEXCOTE | 1 |
| 6 | GASKET | SILICONE | RED | 1 |
| 5 | HEX NUT | BRASS | NEXCOTE | 1 |
| 4 | LOCK WASHER | BRASS | NEXCOTE | 1 |
| 3 | CONTACT PIN | PHOS. BRONZE | GOLD | 1 |
| 2 | INSULATOR | TEFLON | NATURAL | 1 |
| 1 | BODY | BRASS | NEXCOTE | 1 |
| | DESCRIPTION | MATERIAL | FINISH | QTY |

UNLESS OTHERWISE SPECIFIED DIMENSIONS ARE IN MILLIMETERS. DIMENSIONS IN [] ARE IN INCHES AND FOR CUSTOMER REFERENCE ONLY.

UNLESS OTHERWISE SPECIFIED TOLERANCES FOR MILLIMETERS ARE:
0.5 - 8mm ± 0.20mm
8 - 30mm ± 0.40mm
30 - 120mm ± 0.50mm

UNLESS OTHERWISE SPECIFIED TOLERANCES FOR INCHES ARE:
.020 - .315 = ± 0.0007"
.315 - 1.180 = ± 0.015"
1.180 - 4.724 = ± 0.020"

DO NOT SCALE DRAWING

| | |
|--------------|-------------------|
| APPROVALS | DATE |
| DRAWN G.R.S. | 04/31/03 |
| CHECKED | |
| ISSUED | |
| SHEET 1 OF 1 | |
| CAD FILE | C:/172/172129.DWG |

| | | | | |
|----------------------------|------------|--------------------------------------------------------|---|----------|
| <h1>Amphenol - Connex</h1> | | PART DESCRIPTION | | |
| | | N BULKHEAD CRIMP JACK (FOR RG-174/U, 188A/U, 316/U) | | |
| PART NO. | | 172129 | | |
| DWG. NO. | 172129.DWG | REV. | A | SCALE NA |