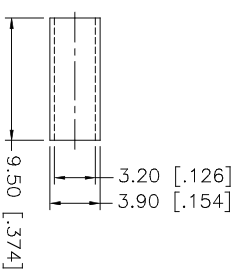
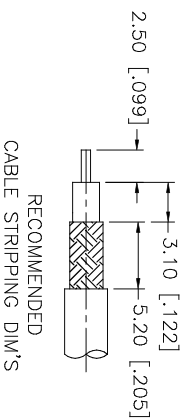
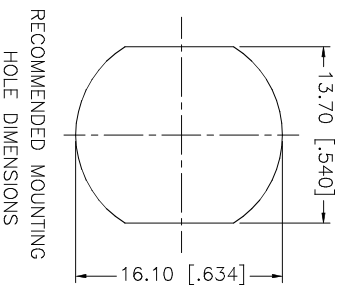
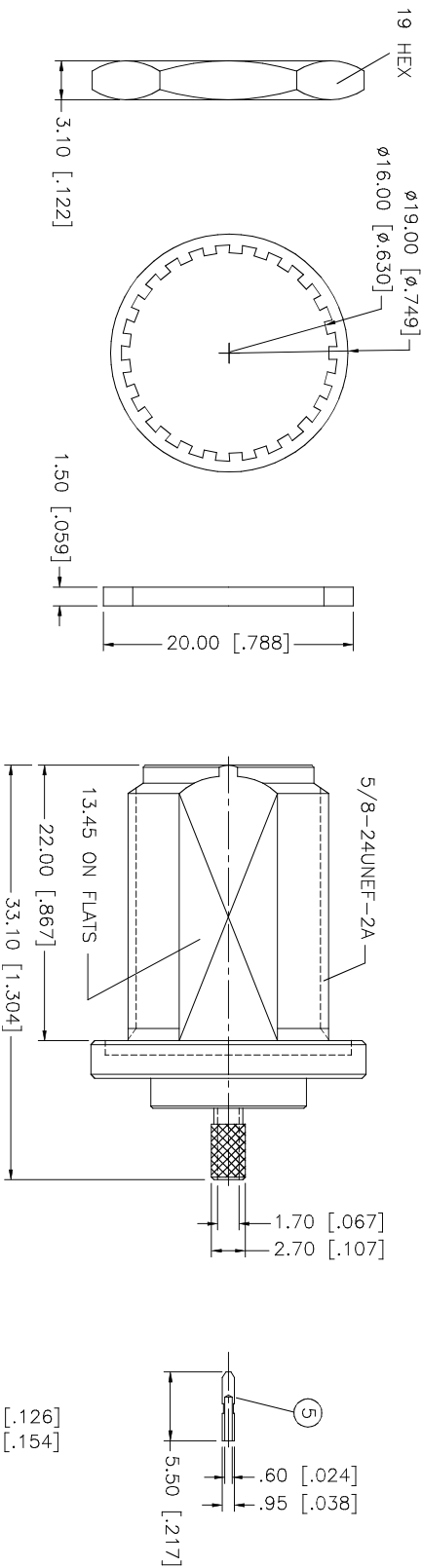


REV.	DATE	DESCRIPTION
NC	03/21/04	UPDATE DRAWING FORMAT



- NOTES:
1. CRIMPED FERRULE
HEX CRIMP SIZE .128"
 2. CRIMPED CONTACT PIN
SQ. CRIMP SIZE 0.7mm OR SOLDER
 3. MAX. PANEL THICKNESS = 6.5mm

QTY	FINISH	MATERIAL	DESCRIPTION
1	NEXCOTE	BRASS	INSULATOR BODY
1	NEXCOTE	TEFLON	INSULATOR
1	GOLD	PHOS. BRONZE	CONTACT PIN
1	NEXCOTE	BRASS	LOCK WASHER
1	NEXCOTE	BRASS	HEX NUT
1	RED	SILICONE	GASKET
1	NEXCOTE	COPPER	FERRULE

APPROVALS	DATE
DRAWN G.R.S.	03/21/04
CHECKED	
ISSUED	
SHEET 1 OF 1	

DO NOT SCALE DRAWING	QTY	FINISH	MATERIAL	DESCRIPTION
UNLESS OTHERWISE SPECIFIED DIMENSIONS ARE IN MILLIMETERS. DIMENSIONS IN [] ARE IN INCHES AND FOR CUSTOMER REFERENCE ONLY. TOLERANCES FOR MILLIMETERS ARE: 0.5 - 8mm ± 0.20mm 8 - 30mm ± 0.40mm 30 - 120mm ± 0.50mm UNLESS OTHERWISE SPECIFIED TOLERANCES FOR INCHES ARE: .020 - .315 = ± 0.007" .315 - 1.180 = ± 0.015" 1.180 - 4.724 = ± 0.020"	1	NEXCOTE	BRASS	INSULATOR BODY
	1	NEXCOTE	TEFLON	INSULATOR
	1	GOLD	PHOS. BRONZE	CONTACT PIN
	1	NEXCOTE	BRASS	LOCK WASHER
	1	NEXCOTE	BRASS	HEX NUT
	1	RED	SILICONE	GASKET
	1	NEXCOTE	COPPER	FERRULE

CAD FILE	DWG. NO.	REV.	NC	SIZE	SCALE
C:/172/172129RP.DWG	172129RP.DWG		NC	A	NA

PART DESCRIPTION	PART NO.
N REVERSE POLARITY BULKHEAD CRIMP JACK (FOR RG-174/U, 188A/U, 316/U)	172129RP

Amphenol Connex