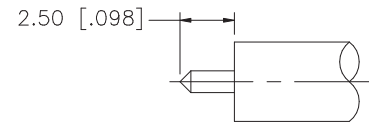
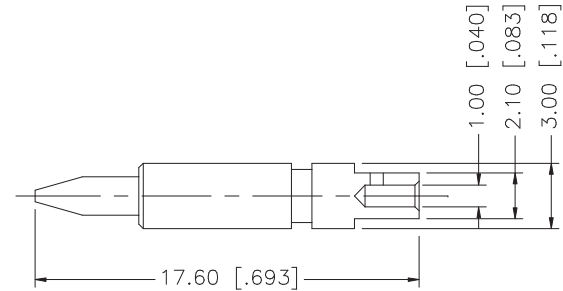
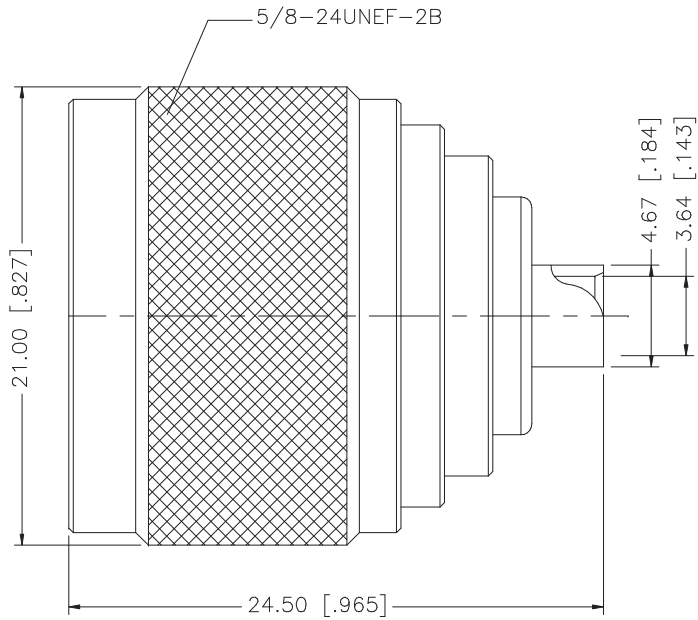


REV.	DATE	DESCRIPTION
A	04/31/03	UPDATE DRAWING FORMAT



RECOMMENDED
CABLE STRIPPING DIM'S

NOTE:

1. CRIMPED CONTACT PIN
HEX CRIMP SIZE .068"

8					<small>UNLESS OTHERWISE SPECIFIED DIMENSIONS ARE IN MILLIMETERS. DIMENSIONS IN [] ARE IN INCHES AND FOR CUSTOMER REFERENCE ONLY.</small> <small>UNLESS OTHERWISE SPECIFIED TOLERANCES FOR MILLIMETERS ARE:</small> 0.5 - 8mm ± 0.20mm 8 - 30mm ± 0.40mm 30 - 120mm ± 0.50mm <small>UNLESS OTHERWISE SPECIFIED TOLERANCES FOR INCHES ARE:</small> .020 - .315 = ± 0.007" .315 - 1.180 = ± 0.015" 1.180 - 4.724 = ± 0.020"	APPROVALS	DATE	<h1 style="text-align: center;">Amphenol Connex</h1>			
7				DRAWN		G.R.S.	04/31/03				
6				CHECKED				PART DESCRIPTION <h2 style="text-align: center;">N DIRECT SOLDER PLUG (.141" SEMI-RIGID CABLE)</h2>			
5				ISSUED							
4				SHEET	1 OF 1		PART NO. <h2 style="text-align: center;">172133</h2>				
3	CONTACT PIN	BRASS	GOLD	1						DWG. NO.	172133.DWG
2	INSULATOR	TEFLON	NATURAL	1							
1	BODY	BRASS	NEXCOTE	1							
DESCRIPTION					MATERIAL	FINISH	QTY				
					DO NOT SCALE DRAWING						
					CAD FILE		C:/172/172133.DWG				