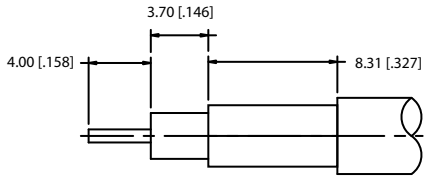
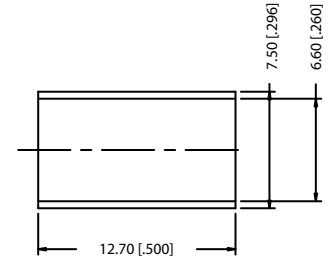
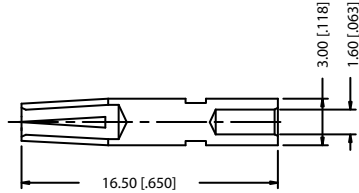
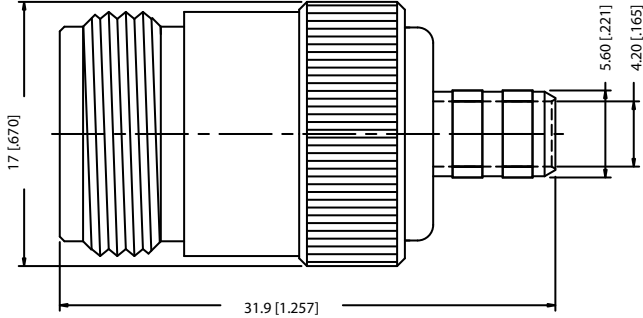


REV.	DATE	DESCRIPTION
A	12/05/99	UPDATE DRAWING




RECOMMENDED CABLE STRIPPING DIMS.

5/8-24UNEF-2A



8			
7			
6			
5			
4	FERRULE	BRASS	GOLD
3	INSULATOR	TEFLON	NATURAL
2	CONTACT PIN	BER. COPPER	GOLD
1	BODY	BRASS	GOLD
	DESCRIPTION	MATERIAL	FINISH

UNLESS OTHERWISE SPECIFIED DIMENSIONS ARE IN MILLIMETERS	APPROVALS	DATE
	DRAWN G.R.S.	12/05/99
DIMENSIONS IN [ ] ARE IN INCHES FOR CUSTOMER REFERENCE ONLY	CHECKED	
	ISSUED	
UNLESS OTHERWISE SPECIFIED TOLERANCES FOR MILLIMETERS ARE: 0.5-6 = ± 0.2 6-30 = ± 0.4 30-120 = ± 0.6 120-315 = ± 1 315-1000 = ± 1.6 1000-2000 = ± 2.4		
DO NOT SCALE DRAWING		

			
<b>TITLE</b> N CRIMP JACK (FOR RG-8X, LMR240, B7808A CABLE)			
SIZE <b>A</b>	FSCM NO. <b>99001</b>	DWG. NO. <b>172148.DWG</b>	REV. <b>A</b>
SCALE <b>NA</b>	PART NO. <b>172148</b>	SHEET <b>1 OF 1</b>	