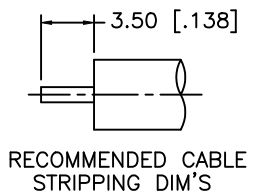
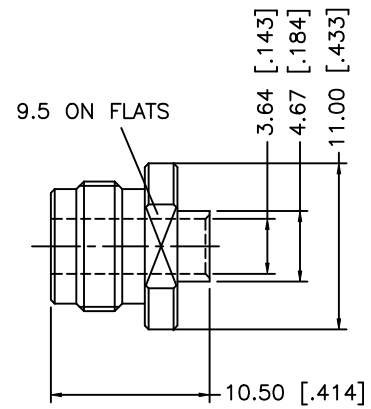
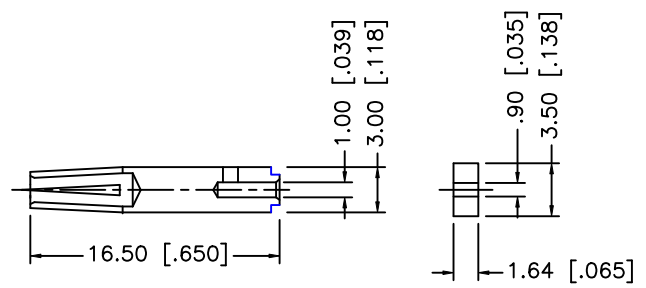
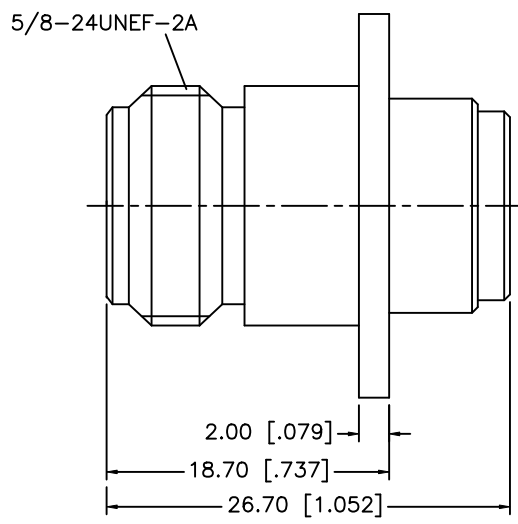
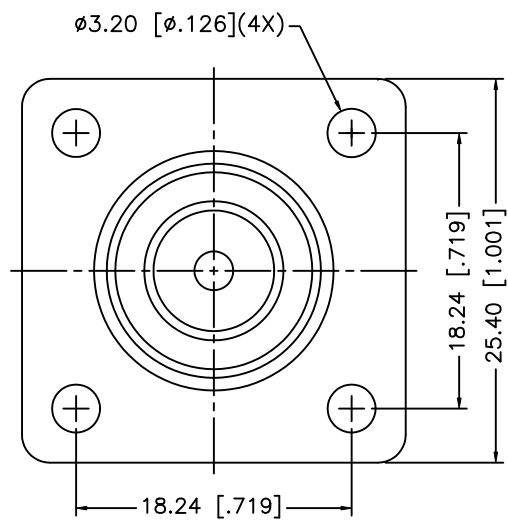


| REV. | DATE | DESCRIPTION |
|------|----------|--|
| A | 04/11/03 | MODIFY PLATING SPECS. / UPDATE DRAWING FORMAT |
| B | 01/30/04 | MODIFY CONTACT PIN AND INSULATOR |
| C | 02/02/05 | MODIFY CONTACT PIN |
| D | 07/25/05 | MODIFY SOLDER NUT PLATING TO GOLD |
| E | 04/02/08 | REVISE CABLE STRIPPING DIMENSION TO 3.5mm, INSULATOR TO PTFE |



NOTE:
1. CRIMPED CONTACT PIN HEX CRIMP SIZE .100"

| DESCRIPTION | MATERIAL | FINISH | QTY | |
|-------------|-------------|--------------|---------|---|
| 8 | | | | |
| 7 | | | | |
| 6 | | | | |
| 5 | SOLDER NUT | BRASS | GOLD | 1 |
| 4 | INSULATOR | TEFLON | NATURAL | 1 |
| 3 | CONTACT PIN | PHOS. BRONZE | GOLD | 1 |
| 2 | INSULATOR | PTFE | NATURAL | 1 |
| 1 | BODY | BRASS | NEXCOTE | 1 |

UNLESS OTHERWISE SPECIFIED DIMENSIONS ARE IN MILLIMETERS. DIMENSIONS IN [] ARE IN INCHES AND FOR CUSTOMER REFERENCE ONLY.

UNLESS OTHERWISE SPECIFIED TOLERANCES FOR MILLIMETERS ARE:
0.5 - 8mm ± 0.20mm
8 - 30mm ± 0.40mm
30 - 120mm ± 0.50mm

UNLESS OTHERWISE SPECIFIED TOLERANCES FOR INCHES ARE:
.020 - .315 = ± 0.007"
.315 - 1.180 = ± 0.015"
1.180 - 4.724 = ± 0.020"

DO NOT SCALE DRAWING

| APPROVALS | DATE |
|--------------|-------------------|
| DRAWN G.R.S. | 04/02/08 |
| CHECKED | |
| ISSUED | |
| SHEET 1 OF 1 | |
| CAD FILE | C:/172/172170.DWG |

| PART DESCRIPTION | |
|--|----------|
| Amphenol Connex | |
| N PANEL DIRECT SOLDER JACK (FOR .141" SEMI RIGID CABLE) | |
| PART NO. 172170 | |
| DWG. NO. 172170.DWG | REV. E |
| SIZE A | SCALE NA |