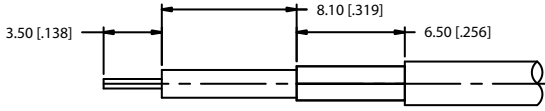
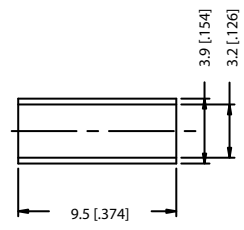
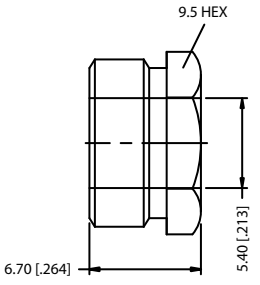
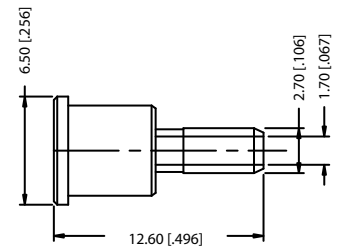
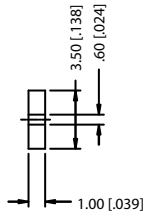
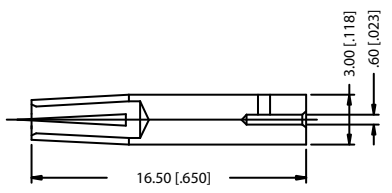
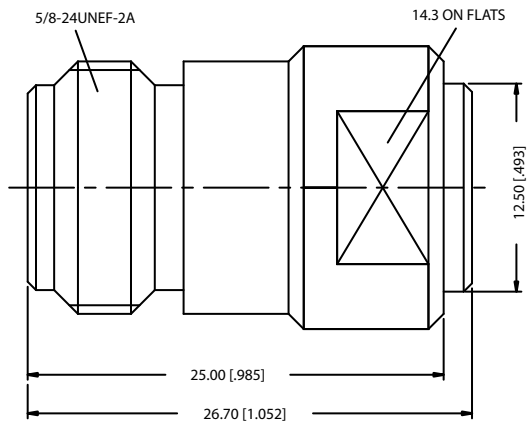



REV.	DATE	DESCRIPTION
NC	11/08/99	INITIAL RELEASE



RECOMMENDED CABLE STRIPPING DIMENSIONS



DESCRIPTION	MATERIAL	FINISH	UNLESS OTHERWISE SPECIFIED DIMENSIONS ARE IN MILLIMETERS DIMENSIONS IN [] ARE IN INCHES FOR CUSTOMER REFERENCE ONLY	APPROVALS	DATE	 Connex Connector Corporation				
1 BODY	BRASS	NICKEL		UNLESS OTHERWISE SPECIFIED TOLERANCES FOR MILLIMETERS ARE: 0.5-6 = ± 0.2 6-30 = ± 0.4 30-120 = ± 0.6 120-315 = ± 1 315-1000 = ± 1.6 1000-2000 = ± 2.4	DRAWN G.R.S.					11/08/99
2 INSULATOR	TEFLON	NATURAL	CHECKED				SIZE A	FSCM NO. 99001	DWG. NO. 172204.DWG	REV. NC
3 CONTACT PIN	PHOS. BRONZE	GOLD	ISSUED				SCALE NA	PART NO. 172204	SHEET	1 OF 1
4 BARREL	BRASS	NICKEL								
5 HEX NUT	BRASS	NICKEL								
6 FERRULE	COPPER	NICKEL								
7										
8			DO NOT SCALE DRAWING							