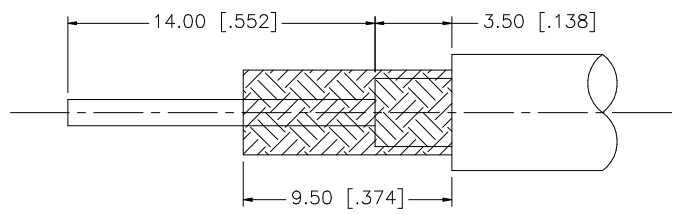
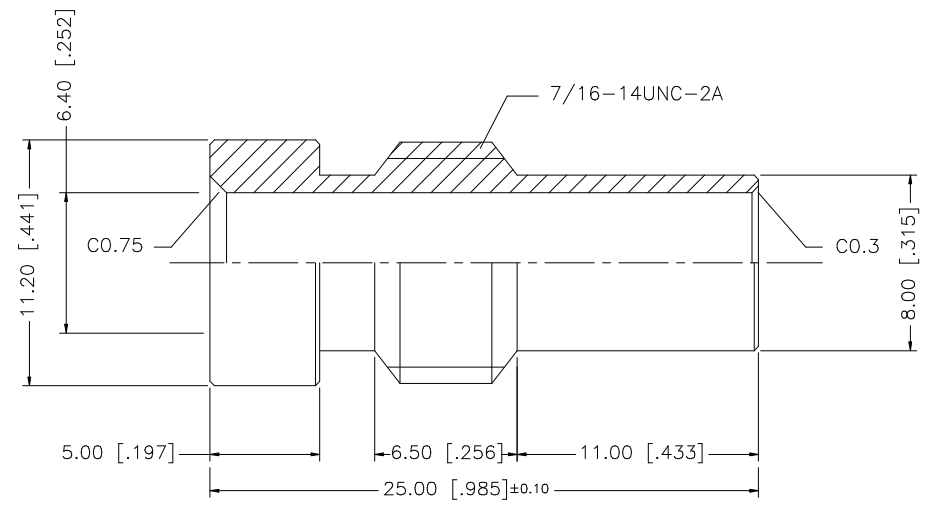


REV.	DATE	DESCRIPTION
NC	05/24/07	INITIAL RELEASE



RECOMMENDED CABLE STRIPPING DIMS.



8					UNLESS OTHERWISE SPECIFIED DIMENSIONS ARE IN MILLIMETERS. DIMENSIONS IN [] ARE IN INCHES AND FOR CUSTOMER REFERENCE ONLY.	APPROVALS	DATE	Amphenol Connex				
7						DRAWN	G.R.S.				05/24/07	
6					UNLESS OTHERWISE SPECIFIED TOLERANCES FOR MILLIMETERS ARE: 0.5 - 8mm ± 0.20mm 8 - 30mm ± 0.40mm 30 - 120mm ± 0.50mm	CHECKED		PART DESCRIPTION				
5						ISSUED			REDUCER (FOR RG-59/U)			
4					UNLESS OTHERWISE SPECIFIED TOLERANCES FOR INCHES ARE: .020 - .315 = ± 0.007" .315 - 1.180 = ± 0.015" 1.180 - 4.724 = ± 0.020"	SHEET	1 OF 1	PART NO.				
3									182108S			
2					DO NOT SCALE DRAWING	CAD FILE		DWG. NO.		REV.	SIZE	SCALE
1	REDUCER	ZINC	SILVER	1			C:/182/182108S.DWG		182108S.DWG		NC	A