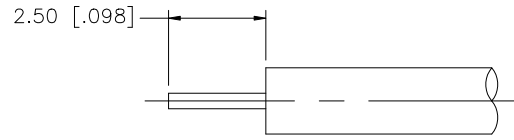
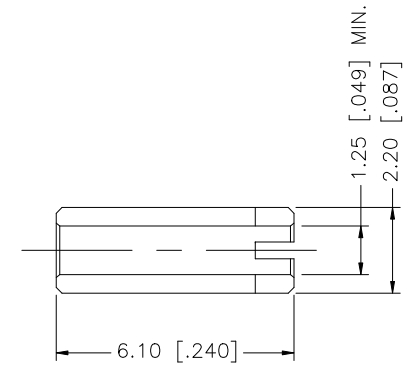
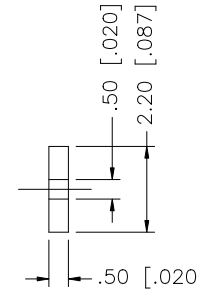
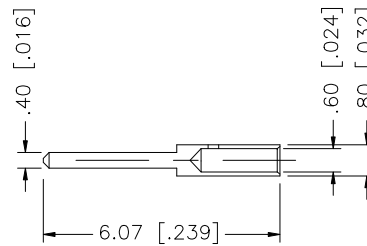
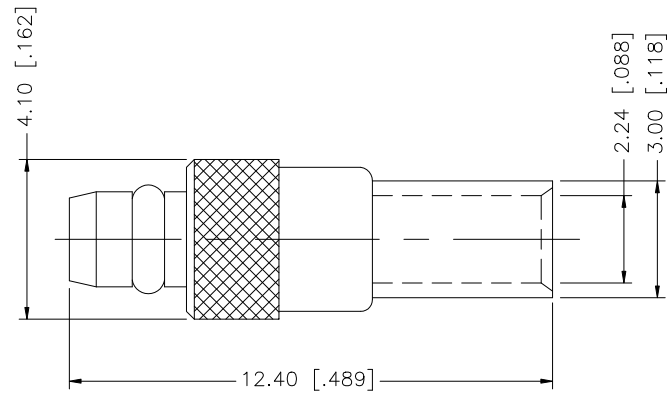


REV.	DATE	DESCRIPTION
NC	05/25/00	INITIAL RELEASE
A	12/11/07	UPDATE DRAWING FORMAT



RECOMMENDED CABLE  
STRIPPING DIM'S.



8			
7			
6	FERRULE	COPPER	GOLD 1
5	RETAINER RING	BER. COPPER	GOLD 1
4	BARREL	BRASS	GOLD 1
3	CONTACT PIN	BRASS	GOLD 1
2	INSULATOR	TEFLON	NATURAL 1
1	BODY	BRASS	GOLD 1
	DESCRIPTION	MATERIAL	FINISH QTY

UNLESS OTHERWISE SPECIFIED DIMENSIONS ARE IN MILLIMETERS. DIMENSIONS IN [ ] ARE IN INCHES AND FOR CUSTOMER REFERENCE ONLY.

UNLESS OTHERWISE SPECIFIED TOLERANCES FOR MILLIMETERS ARE:  
0.5 - 8mm ± 0.20mm  
8 - 30mm ± 0.40mm  
30 - 120mm ± 0.50mm

UNLESS OTHERWISE SPECIFIED TOLERANCES FOR INCHES ARE:  
.020 - .315 = ± 0.007"  
.315 - 1.180 = ± 0.015"  
1.180 - 4.724 = ± 0.020"

DO NOT SCALE DRAWING

APPROVALS		DATE
DRAWN	G.R.S.	12/11/07
CHECKED		
ISSUED		
SHEET	1 OF 1	
CAD FILE	C:/262/262127.DWG	

# Amphenol Connex

PART DESCRIPTION			
MMCX STRAIGHT DIRECT SOLDER PLUG (FOR .047" SEMI-RIGID CABLE)			
PART NO.			
262127			
DWG. NO.	REV.	SIZE	SCALE
262127.DWG	A	A	NA