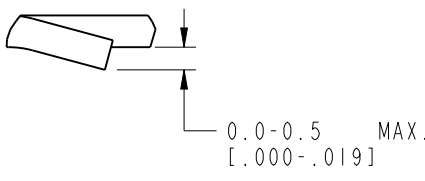
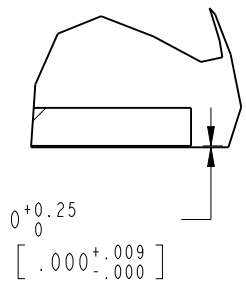


NOTES:

1. MATERIALS OF CONSTRUCTION:
 BODY = BRASS, NICKEL PLATED (.000200 MIN. THICK)
 CONTACT PIN = PHOSPHOR BRONZE, BRIGHT TIN PLATE (.000250 MIN. THICK)
 BRACKET = PHOSPHOR BRONZE, BRIGHT TIN PLATE (.000180 MIN. THICK)
 INSULATORS (2) = POLYPROPYLENE, NATURAL
2. ELECTRICAL:
 A. IMPEDANCE: 75 OHM
 B. FREQUENCY RANGE: DC - 2150 MHZ
 C. RETURN LOSS: -10 dB MIN.
 D. DIELECTRIC WITHSTANDING VOLTAGE: 1200 VRMS, MIN.
 E. INSULATION RESISTANCE: 500 MEG OHMS
 F. CONTACT RESISTANCE: 20 mOHMS MAX.
3. MECHANICAL:
 A. DURABILITY: 100 CYCLES MIN.
 B. PIN RANGE: \varnothing .025 TO .040
 C. MATING TORQUE: 15 IN*LBS MAX.
 D. BODY TO BRACKET RETENTION: 60 LBS MINIMUM
 E. TEMPERATURE RANGE: -40° C TO 60° C
4. PACKAGING:
 A. QUANTITY: TRAY PACK
 B. MARKING: PACKAGING TO BE MARKED
 "AMPHENOL RF, 531-40101, AND DATE CODE"

THIRD ANGLE PROJ.

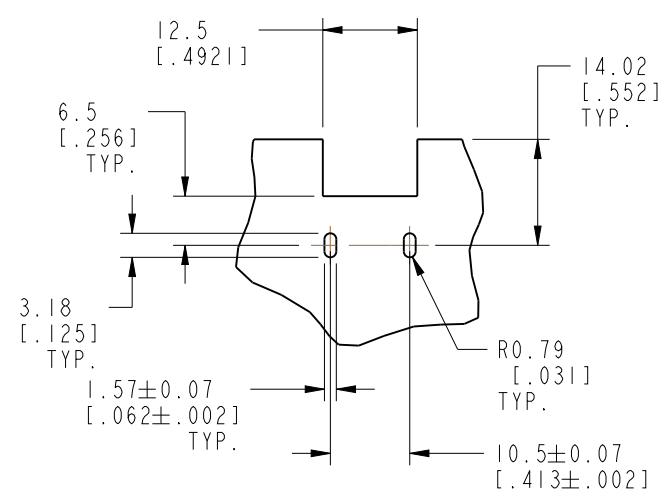
REVISIONS				
REV	DESCRIPTION	DATE	ECN	APPR
A	RELEASE TO MFG.	3-8-02	43836	CPM
B	RE-DRAW IN CREO	26-Sep-18		KCE
BI	ADJUST TOLERANCES, ADD SECOND VIEW	27-Sep-18		KCE



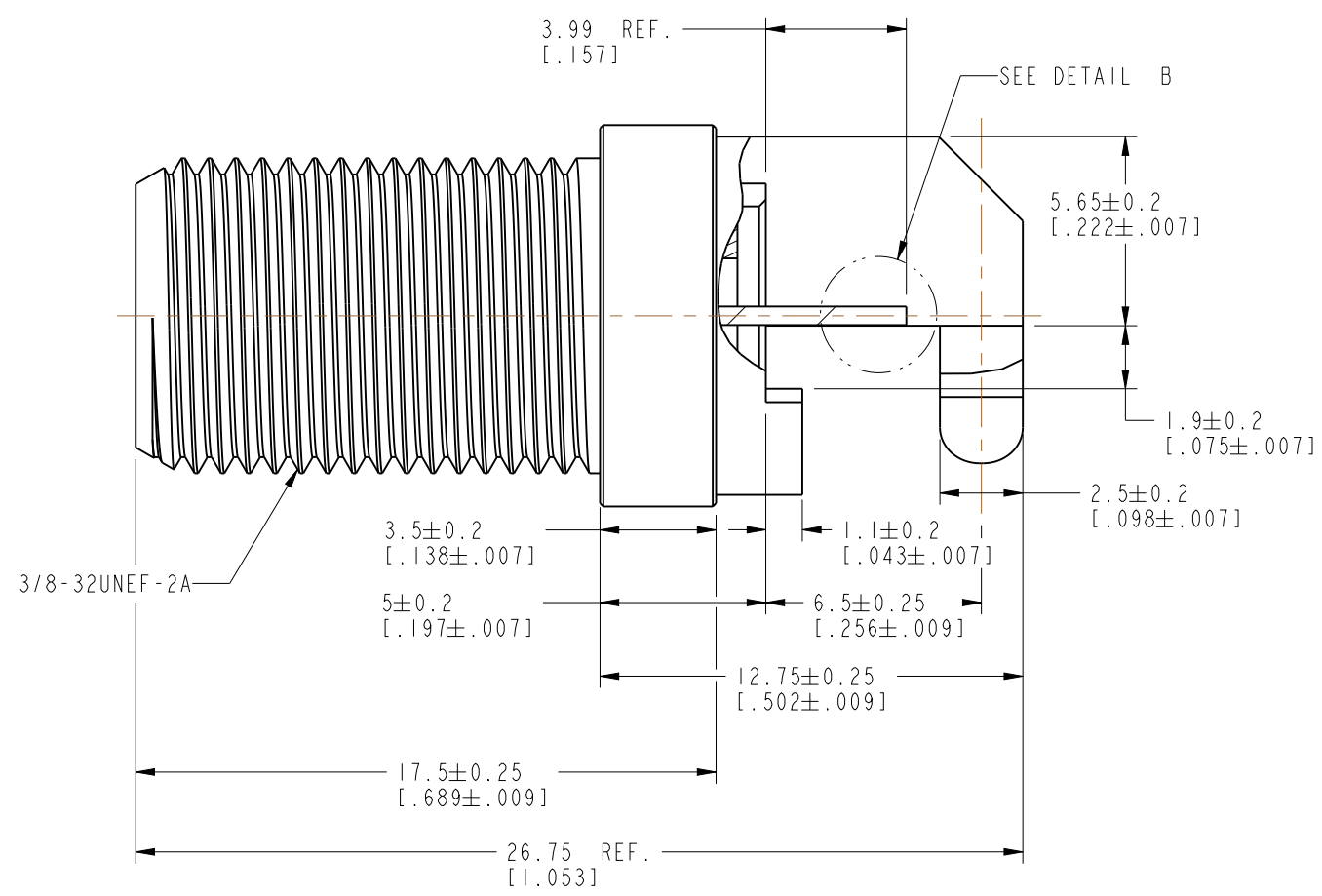
TYPE 1

TYPE 2

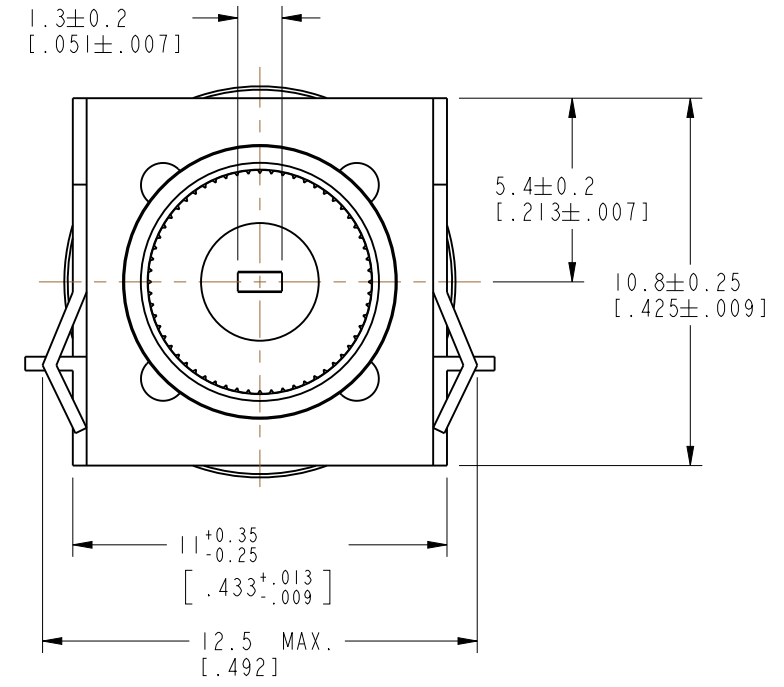
DETAIL B
SCALE 9.000



RECOMMENDED PCB
MOUNTING PATTERN



SECTION A-A
SCALE 4.500



PRELIMINARY ISSUE
CUSTOMER OUTLINE DRAWING
 ALL OTHER SHEETS ARE FOR INTERNAL USE ONLY

UNLESS OTHERWISE SPECIFIED, DIMENSIONS ARE IN METRIC AND TOLERANCES ARE: <0.5mm ± 0.05mm 0.5 - 6mm ± 0.1mm 6 - 30mm ± 0.2mm 30 - 120mm ± 0.3mm ANGLES ±1°	MATERIAL	DRAWN	DATE	TITLE		Amphenol RF www.amphenolrf.com
	-	C. McGRATH	10-Aug-01	F RECEPTACLE PCB EDGE MOUNT		
NOTICE - These drawings, specifications, or other data (1) are, and remain the property of Amphenol corp. (2) must be returned upon request; and (3) are confidential and not to be disclosed to any person other than those to whom they are given by Amphenol Corp. the furnishing of these drawings, specifications, or other data by Amphenol Corp., or to any other person to anyone for any purpose is not to be regarded by implication or otherwise in any manner licensing, granting rights to permitting such holder or any other person to manufacture, use or sell any product, process or design, patented or otherwise, that may in any way be related to or disclosed by said drawings, specifications, or other data.	REFERENCE	ENGINEER	DATE	SCALE: 2.0:1.0		DRAWING NO. 531-40101
	EAR# 385	O. BARTHELME	10-Aug-01	SHEET 2 OF 2		ITEM NO. 531-40101
	REF: 531-40101_ASSY	APPROVED	O. BARTHELME	DATE	DWG SIZE	REV
	CONFIGURATION LEVEL: In Work	O. BARTHELME	3/8/02	B	BI	PART NO. 531-40101
FINISH	CAD FILE					