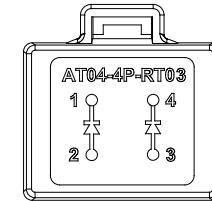
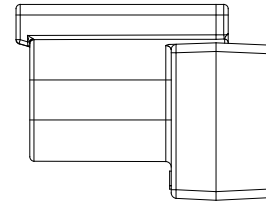
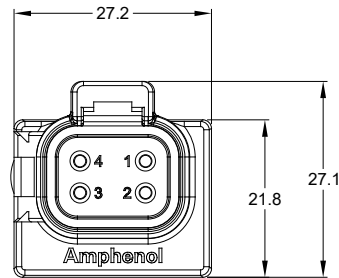
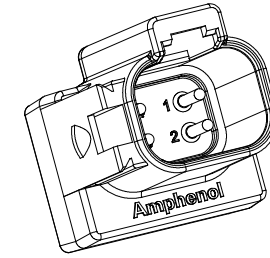
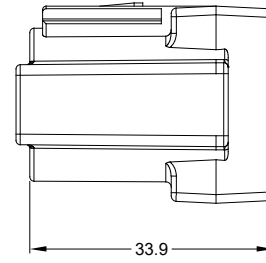
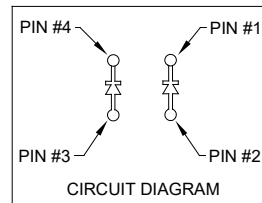


REVISIONS					
REV	ECO	DESCRIPTION	DATE	BY	APPR
A1	-	RELEASE	14MAY19	SULLEN	TOMMY



NOTES: UNLESS OTHERWISE SPECIFIED

- MATERIAL:
HOUSING: THERMOPLASTIC, GRAY
CONTACT: COPPER ALLOY
CONTACT PLATING: NICKEL PLATED
- MODIFICATIONS: DIODE
- SPECIFICATIONS:
 - DIODE P/N: MUR460G
 - PEAK REVERSE VOLTAGE: 600.0 V MAX.
 - PEAK FORWARD VOLTAGE: 1.28 V MAX.
 - AVERAGE FORWARD CURRENT: 4.0 A MAX.
 - OPERATING TEMPERATURE: -55°C TO +125°C
 - MOISTURE RESISTANCE: IP67
 - MATING CYCLE DURABILITY: 100 CYCLES
 - RoHS COMPLIANT
- MATING PART: AT06-4S*
(* = ALL MODIFICATIONS)
- ALL DIMENSIONS ARE FOR REFERENCE USE ONLY



AT04-4P-RT03		REF: DT04-4P-RT03	
PART NUMBER		DESCRIPTION	
QUANTITY	MATERIALS LIST		
UNLESS OTHERWISE SPECIFIED: 1) All dimensions are in metric (mm). 2) Tolerances are as follows: 1 PL DEC ±0.30 2 PL DEC ±0.15 3 PL DEC ±0.08 Fractions ±1/64 Angles ±1° 3) Note reference =		SIGNATURES	DATE
MATERIAL SPECIFICATIONS:		DRAWN: SULLENZHANG	19SEP18
PROCESS SPECIFICATIONS:		CHECKED: ORION LI	19SEP18
NEXT ASSY:		ENGINEER:	APPROVAL: TOMMY XIE 19SEP18
THIS DRAWING IS SUPPLIED FOR INFORMATION ONLY. DESIGN FEATURES, SPECIFICATIONS AND PERFORMANCE DATA SHOWN HEREON ARE THE PROPERTY OF THE AMPHENOL CORPORATION. NO RIGHTS OF REPRODUCTION ARE IMPLIED. ALL DIMENSIONS ARE SUBJECT TO NORMAL MANUFACTURING VARIATIONS.		CUSTOMER:	
SIZE		TYPE	DWG NO.
B C-			AT04-4P-RT03
SCALE: NONE			REVISION A1
SHEET 1		OF 1	

TITLE: RECEPTACLE 4PIN TERMINATOR AT SERIES
DWG NO: AT04-4P-RT03
REV: A1
SH: 1
OF: 1