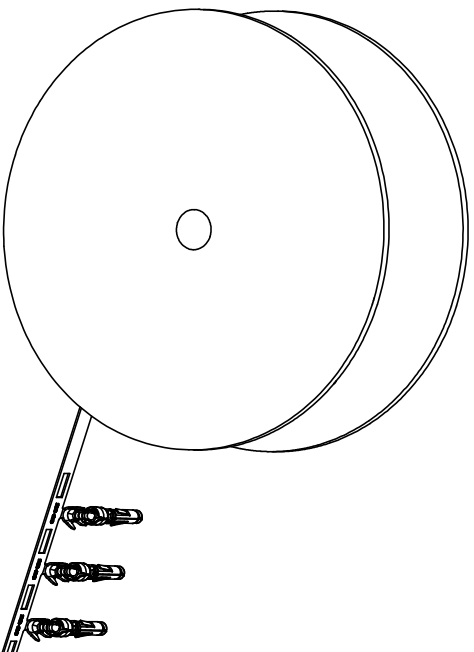


| REVISIONS | | | | |
|-----------|-----|------------------------|-----------|--------------|
| REV | ECO | DESCRIPTION | DATE | BY APPR |
| A1 | - | RELEASED DRAWING | Nov-9-17 | Rookie Tommy |
| A2 | - | ADD THE GS PART NUMBER | Jan-28-19 | Blink Tommy |
| A3 | - | CHANGE HAND CRIMPER | Nov-8-19 | Flan Tommy |

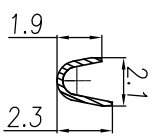
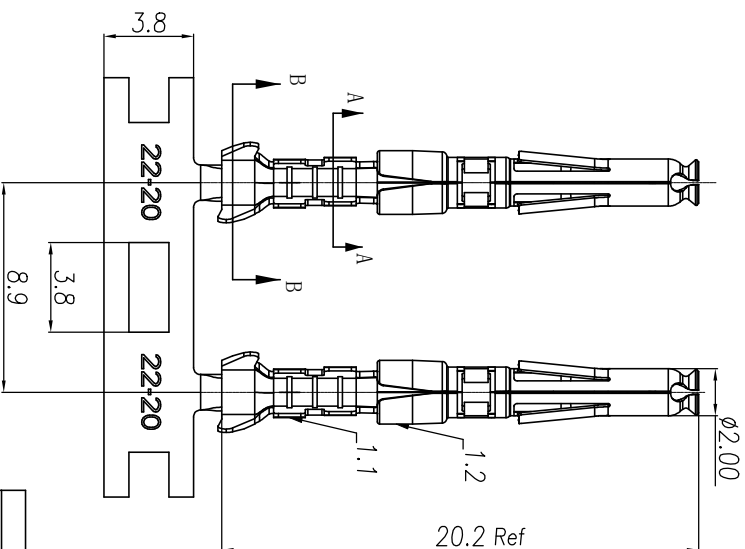
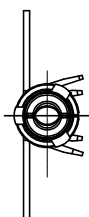


CONTACT ORIENTATION ON ROLL

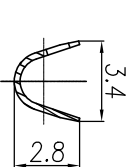
NOTES: (UNLESS OTHERWISE SPECIFIED)

- MATERIAL:
 - CONTACT BODY: COPPER ALLOY.
 - OUTER SPRING: STAINLESS STEEL.
- SPECIFICATIONS:
 - CURRENT RATING: 5A MAX.
 - TERMINATION TYPE: CRIMPING.
 - WIRE RANGE: 22~20AWG.
 - WIRE INSULATION DIA(MAX): $\varnothing 2.6\text{mm}$.
- RHS COMPLIANT.
- ALL DIMENSIONS ARE FOR REFERENCE USE ONLY.
- AVAILABLE TOOLS:
 - HAND CRIMPER: MFX-3958. A3
 - CRIMP APPLICATOR: MFX-3957.
 - EXTRACTION TOOL: QXRT20.

| P/N | CONTACT PLATING(MATING AREA) |
|-----------|--------------------------------------|
| SS20W2T | TIN PLATING OVER NICKEL. |
| SS20W2N | NICKEL PLATING OVER COPPERIZE. |
| SS20W2F | GOLD FLASH PLATING OVER NICKEL. |
| SS20W2G5 | 5 μ " GOLD PLATING OVER NICKEL. |
| SS20W2G10 | 10 μ " GOLD PLATING OVER NICKEL. |
| SS20W2G15 | 15 μ " GOLD PLATING OVER NICKEL. |
| SS20W2G30 | 30 μ " GOLD PLATING OVER NICKEL. |



SECTION A-A



SECTION B-B

| QUANTITY | PART NUMBER | DESCRIPTION | ITEM |
|----------|-------------|-------------|------|
| | | | |

MATERIALS LIST

| UNLESS OTHERWISE SPECIFIED | | | |
|---------------------------------------|-----------|-------|----------|
| 1) All dimensions are in millimeters. | DRAWN: | RAI | Nov-8-19 |
| 2) Tolerances are as follows: | CHECKED: | RAI | Nov-8-19 |
| 1 Pt. DEC 20-19 | ENGINEER: | Tommy | Nov-8-19 |
| 3 Pt. DEC 20-19 | APPROVE: | Tommy | Nov-8-19 |
| 3) Note reference = | CUSTOMER: | | |

| MATERIAL SPECIFICATIONS | | PROCESS SPECIFICATIONS | |
|-------------------------|--|------------------------|--|
| | | | |

| NEXT ASBY | | SCALE | |
|-----------|--|-------|------|
| | | B | C- |
| | | NONE | NONE |

ECO-MATE SOCKET CONTACT,
STAMPED, 20-22AWG, SIZE 20

Amphenol

Sine Systems - www.amphenol-sine.com
44724 Monty Drive
Clinton Township, MI 48038