



# Series 35W000 SOWIC-to-DIP Adapter – 14/28 Pins

## FEATURES

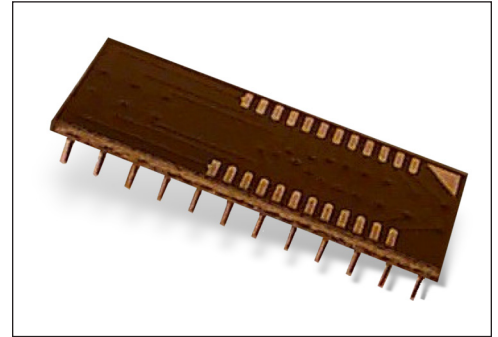
- A cost-effective means of upgrading to SOIC without changing your PCB layout
- Available on 0.300 [7.62] centers. Consult **Data Sheet 18011** for Adapters on 0.400 [10.16] or 0.600 [15.24] centers

## GENERAL SPECIFICATIONS

- BOARD MATERIAL: 0.062 thick FR-4 with 1-oz. Cu traces, both sides
- PINS: Brass 360 1/2-hard per UNS C36000 ASTM-B16-00
- PIN PLATING: Sn/Pb 93/7 per ASTM B 545 over 100 $\mu$  [2.54 $\mu$ ] Ni per SAE AMS-QQ-N-290
- OPERATING TEMPERATURE: 221°F [105°C]

## MOUNTING CONSIDERATIONS

- SUGGESTED PCB HOLE SIZE: 0.028  $\pm$  0.003 [0.71  $\pm$  0.08] dia.



**CUSTOMIZATION:** In addition to the standard products shown on this page, Aries specializes in custom design and production. Special materials, platings, sizes, and configurations can be furnished, depending on the quantity. **NOTE:** Aries reserves the right to change product general specifications without notice.

## ORDERING INFORMATION

See Table below for P/Ns

ALL DIMENSIONS: INCHES [MILLIMETERS]

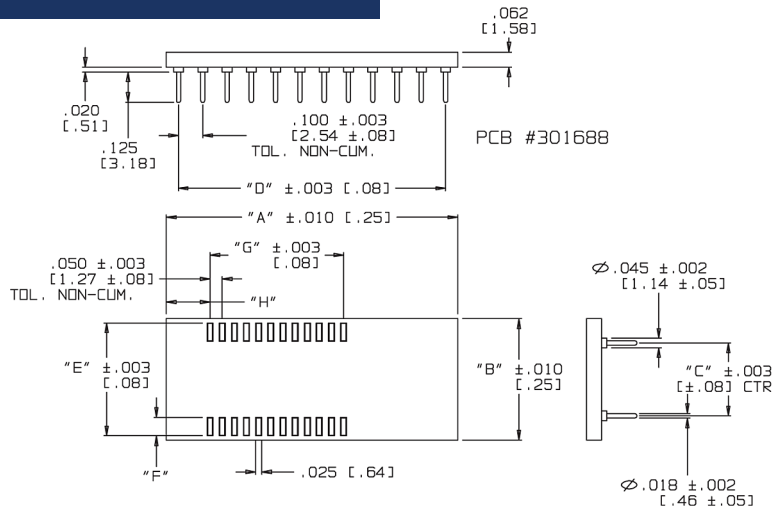
ALL TOLERANCES:  $\pm$ 0.005 [0.13] UNLESS OTHERWISE SPECIFIED

"A" = NO. OF PINS PER ROW x 0.100 [2.54]

"D" = (NO. OF PINS PER ROW - 1) x 0.100 [2.54]

AVAILABLE IN PANELIZED FORM WITH OR WITHOUT CUSTOMER-SUPPLIED DEVICES MOUNTED. CONSULT FACTORY.

CONSULT FACTORY FOR OTHER SIZES AND CONFIGURATIONS



P/N	Pins	Type	Dim. "B"	Centers "C"	Dim. "E"	Dim. "F"	Dim. "G"	Dim. "H"
14-35W000-10	14	SOIC	0.500 [12.70]	0.300 [7.62]	0.465 [11.81]	0.076 [1.93]	0.500 [12.70]	0.180 [4.57]
16-35W000-10	16	SOIC	0.500 [12.70]	0.300 [7.62]	0.465 [11.81]	0.076 [1.93]	0.550 [13.97]	0.180 [4.57]
18-35W000-10	18	SOIC	0.500 [12.70]	0.300 [7.62]	0.465 [11.81]	0.076 [1.93]	0.550 [13.97]	0.180 [4.57]
20-35W000-10	20	SOIC	0.500 [12.70]	0.300 [7.62]	0.465 [11.81]	0.076 [1.93]	0.550 [13.97]	0.180 [4.57]
24-35W000-10	24	SOIC	0.500 [12.70]	0.300 [7.62]	0.465 [11.81]	0.076 [1.93]	0.550 [13.97]	0.180 [4.57]
28-35W000-10	28	SOIC	0.500 [12.70]	0.300 [7.62]	0.465 [11.81]	0.076 [1.93]	0.550 [13.97]	0.180 [4.57]



**ARIES**  
ELECTRONICS, INC.

Bristol, PA 19007-6810 USA  
TEL (215) 781-9956 • FAX (215) 781-9845  
WWW.ARIESELEC.COM • INFO@ARIESELEC.COM

