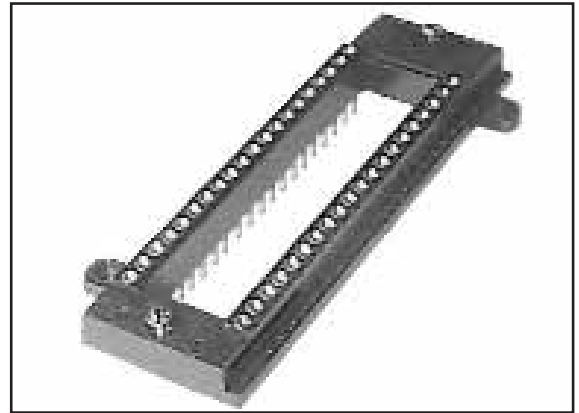
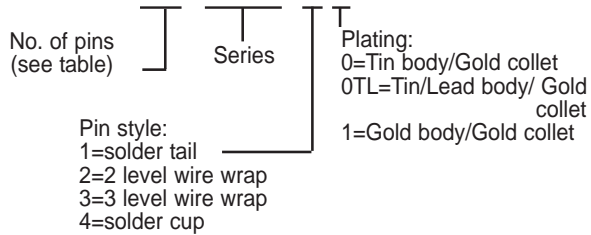




Series 6556 Universal Test Socket Receptacle

ORDERING INFORMATION

XX-6556-XX



Note: Aries specializes in custom design and production. In addition to the standard products shown on this page, special materials, platings, sizes, and configurations can be furnished, depending on quantities. Aries reserves the right to change product specifications without notice.

No. of Pins	Dim. "A"	Dim. "B"	Dim. "C"
24	1.790 [45.47]	1.100 [27.94]	1.615 [41.02]
28	1.990 [50.55]	1.300 [33.02]	1.815 [46.10]
32	2.190 [55.63]	1.500 [38.10]	2.015 [51.18]
36	2.390 [60.71]	1.700 [43.18]	2.215 [56.26]
40	2.590 [65.79]	1.900 [48.26]	2.415 [61.34]
42	2.660 [67.56]	2.000 [50.80]	2.515 [63.88]
44	2.790 [70.87]	2.100 [53.34]	2.615 [66.42]
48	2.990 [75.85]	2.300 [58.42]	2.815 [71.50]

**Receptacle accepts
Aries' Universal Test
Socket Series X55X.
Consult Data Sheet
Nos. 10001 and
10002 for details.**

FEATURES:

- The Aries Universal Test Socket Receptacle is sturdy, open frame, and easily mounted to PC boards.
- Allows for easy replacement of Aries' and other manufacturers' test sockets.
- The threaded inserts at both ends of the receptacle provide a firm and positive connection for the test socket.
- A choice of four collet pin styles makes the receptacle useful for any interconnection method.
- If a Hi-temp. version for use with socket shown on data sheet 10002 is required, please contact Aries for availability.

SPECIFICATIONS:

- Socket body is black UL 94V-0 Glass-filled Polyphenylene Sulfide (PPS).
- Pin body is Brass Alloy 360 1/2 hard per UNS C36000 ASTM-B16-00.
- Pin body plating is 100µ" [2.54µm] Nickel underplate per SAE-AMS-QQ-N-290, overplated with either:
X0 = 200µ" [5.08µm] min. Matte Tin per ASTM B545-97
X0TL = 200µ" [5.08µm] min. 93/7 Tin/Lead per ASTM B545.
X1 = 10µ" [0.25µm] min. Gold per MIL-G-45204
- 4-fingered collet contact is Beryllium Copper Alloy per UNS C17200 ASTM-B194-01.
- Contact plating is 30µ [0.762µm] min. Gold per MIL-G-45204 over 50µ [1.27µm] min. Nickel per QQ-N-290.
- Hardware is Stainless Steel and Nickel plated Brass.
- Contact current rating=3 Amps.
- Operating temperature=221°F [105°C] Tin plating,
=302°F [150°C] Gold plating.
- Accepts leads .015-.025 [.38-.64] in diameter, .110-.150 [2.54-3.81] long.
- Insertion Force=180 grams/pin; Withdrawal Force=90 grams/pin; Normal Force=140 grams/pin; based on a .018 [.46] diameter test lead.

MOUNTING CONSIDERATIONS:

- See dimension table on page 2.

 **ARIES**[®]
ELECTRONICS, INC.
http://www.arieselec.com • info@arieselec.com

NORTH AMERICA
Frenchtown, NJ USA
TEL: (908) 996-6841
FAX: (908) 996-3891



EUROPE
TEL: +44 870 240 0249
FAX: +44 871 919 6033
europe@arieselec.com



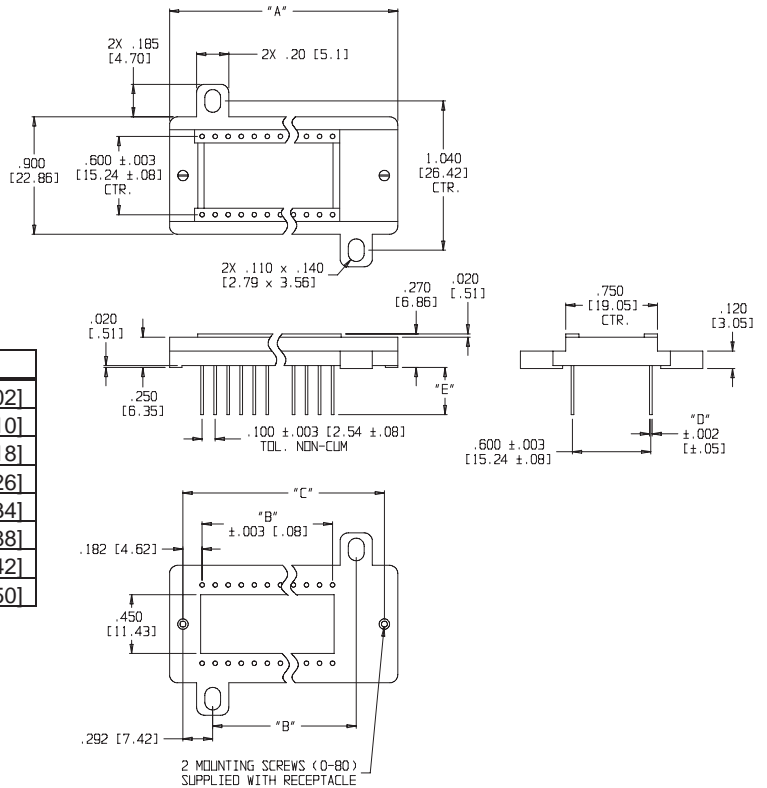
10003
REV.D
page 1 of 2



Series 6556 Universal Test Socket Receptacle

All tolerances $\pm .005$ [.13]
unless otherwise specified

ALL DIMENSIONS: INCHES [MILLIMETERS]



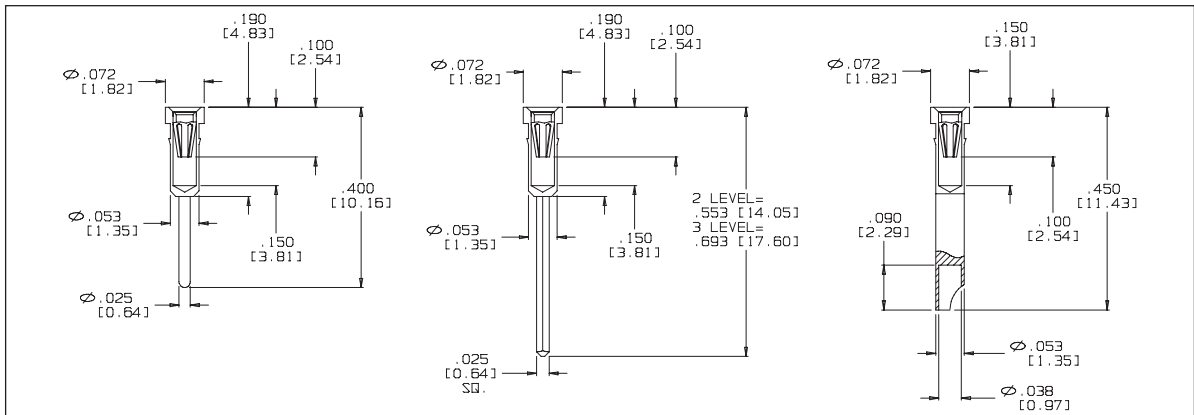
No. of Pins	Dim. "A"	Dim. "B"	Dim. "C"
24	1.790 [45.47]	1.100 [27.94]	1.615 [41.02]
28	1.990 [50.55]	1.300 [33.02]	1.815 [46.10]
32	2.190 [55.63]	1.500 [38.10]	2.015 [51.18]
36	2.390 [60.71]	1.700 [43.18]	2.215 [56.26]
40	2.590 [65.79]	1.900 [48.26]	2.415 [61.34]
42	2.660 [67.56]	2.000 [50.80]	2.515 [63.88]
44	2.790 [70.87]	2.100 [53.34]	2.615 [66.42]
48	2.990 [75.85]	2.300 [58.42]	2.815 [71.50]

Pin Style	Dim. "D" $\pm .002$ [.05]	Dim. "E"	Rec. PCB Hole Dia. Size $\pm .002$ [.05]
1	.025 [.64]	.130 [3.30]	.035 [.89]
2	.025 [.64]	.283 [7.19]	.044 [1.12]
3	.025 [.64]	.423 [10.74]	.044 [1.12]
4	.053 [1.35]	.180 [4.57]	.063 [1.60]

SOLDER TAIL

WIRE WRAP

SOLDER CUP



ARIES[®]
ELECTRONICS, INC.
<http://www.arieselec.com> • info@arieselec.com

NORTH AMERICA
Frenchtown, NJ USA
TEL: (908) 996-6841
FAX: (908) 996-3891



EUROPE
TEL: +44 870 240 0249
FAX: +44 871 919 6033
europe@arieselec.com



1003
REV.D
page 2 of 2