

# FiberExpress Manager

## Rack Components and Modules

AX100934 FiberExpress Manager Shelf



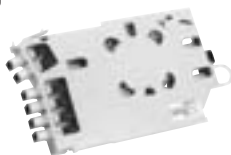
AX101943 FiberExpress Manager 1U Rack Mount Patch Panel



AX102032 FiberExpress Manager 1U Cable Management Accessory



AX101525 Connector Module Pre-terminated MPO-MT-RJ



### FiberExpress Manager Shelf

**FiberExpress modules** are rack-mounted using FiberExpress Manager Shelves. The shelves provide the total system with extra high connection density while facilitating cable routing and patch cord management. For 19- or 23-inch rack: 19 in. shelf holds up to 12 modules; 23 in. shelf holds up to 16 modules.

### FiberExpress Manager 1U

The **FiberExpress Manager 1U Rack Mount Patch Panel** is a low-cost, compact assembly designed for interconnection or splicing of optical fiber cables, using up to three FiberExpress Manager Modules. The low-profile design minimizes rack space to only 45 mm (1.75 in.). An optional FiberExpress Manager 1U Cable Management Accessory is also available.

### FiberExpress Manager Connector Module

The **Connector Module** is the basic building block of the FiberExpress Manager. It is designed with a unique release mechanism that allows it to slide from the shelf like a PC card, easing management of patch cords.

Description	Belden Part Number	
	Gray	Black

### FiberExpress Manager

FiberExpress Manager		
Shelf, 23 in., 10.9 kg (24 lb)	AX100934	AX100935
Shelf, 19 in., 8.2 kg (18 lb)	AX101084	AX101085
1U, Rack Mount Patch Panel, 19 in., 5 kg (11 lb)	AX101944	AX101943
1U, Cable Management Accessory, 19 in., 1 kg (2 lb)	AX102033	AX102032

Description	Belden Part Number					
	ST Type	SC Simplex	SC Duplex	SC Duplex (ST in)	LC	FC

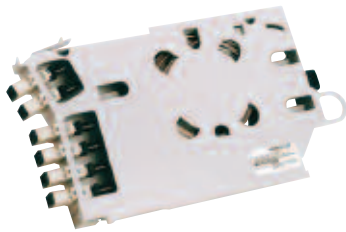
### FiberExpress Manager

FiberExpress Manager Connector Module						
Metal Sleeve, Multimode, 6 fibers	AX101089		AX101092			
Zirconia Ceramic, Single-mode, 6 fibers	AX100936	AX100943	AX100944			
Metal Sleeve, Multimode, 12 fibers	AX101187		AX101714	AX101120	AX101528	
Zirconia Ceramic, Single-mode, 12 fibers	AX101186		AX101713	AX101119	AX101527	
Zirconia Ceramic, Single-mode, 12 UPC pigtails			AX101715			
Metal Sleeve, Multimode, 24 fibers					AX102306	
Zirconia Ceramic, Single-mode, 24 fibers					AX102305	
Zirconia Ceramic, Single-mode/Multimode, 6 fibers						AX100937
		Multimode 62.5 μm	Multimode 50 μm	Single-mode		—
MPO(m)-ST type, 12 pre-terminated	AX101189		AX101190	AX101188		
MPO(m)-SC Duplex, 12 pre-terminated	AX101091		AX101114	AX101090		
MPO(m)-MT-RJ(m), 12 pre-terminated	AX101525		AX101526	AX101524		
MPO(m)-LC, 12 pre-terminated	AX101530		AX101531	AX101529		
MPO(m)-LC, 24 pre-terminated	AX102309		AX102308	AX102307		
MT-RJ, Beige, Multimode, 12 fibers						AX101096
MT-RJ, Blue, Single-mode, 12 fibers						AX101581

These products are in the process of being assessed for RoHS compliance. Please check our Web Site for the most current RoHS status.

# DATA Sheet

## FiberExpress Manager Connector Modules



FiberExpress Manager Connector Module

The connector module is the basic building block of the FiberExpress Manager. It is designed with our unique release mechanism that allows it to slide from the shelf like a PC card, easing management of patch cords.

### Features & Benefits

- > Wide connector options offering to address all possible configurations
- > Upper connectors mounted at an angle – preventing patch cord bend radius violation
- > Fiber Slack – is contained within individual connector modules. Offers easy management and protection of fibers
- > Termination preferences – choose traditional field termination methods (such as field connector or fusion splice) or use Belden CDT's pre-terminated, MPO connectorized modules. Use the method most appropriate to your project, and save time & money
- > With the integrated splice holder within the module, no need for cumbersome splice trays
- > Highest density and manageability in the industry, optimizing space and Moves, Adds and Changes (MACs) in the telecommunications room.

### Applications

- > Backbone termination in Telecommunications Rooms or Main Distribution Rooms
- > Telco, Co-location, Point of Presence (POP), CLEC & CATV fiber deployment
- > Fiber interconnect cabinet
- > Cross-connect or interconnect configuration.

### Technical Specifications

- > Standard connectors: ST type, 568SC, SC, FC
- > Small form-factor connectors: MT-RJ, LC
- > Fiber types: Singlemode and Multimode
- > Fiber capacity: 6 fibers, 8 fibers, 12 fibers and 24 fibers (LC only)
- > Termination options: Field termination, splice or factory terminated using MPO connector at back of module. Module can be ordered with 12 color-coded (as per ANSI/TIA/EIA-568-B) pre-loaded pigtails and splice holders ready for splicing
- > Transition management: Splice holder or breakout kit (Not included in the FiberExpress connector module).

#### ST type, FC and SC Duplex

MPO Connectors	Multimode	Singlemode
Insertion Loss (Total both ends)	1.50 dB max.	1.25 dB max.
Reflectance	< -20 dB	< -55 dB

#### MT-RJ

MPO Connectors	Multimode	Singlemode
Insertion Loss (Total both ends)	1.40 dB max.	1.40 dB max.
Reflectance	< -20 dB	< -45 dB

#### LC

MPO Connectors	Multimode	Singlemode
Insertion Loss (Total both ends)	1.15 dB max.	1.15 dB max.
Reflectance	< -20 dB	< -50 dB

Note: Designed as per TIA/EIA-568-B.3.



# DATA Sheet

## FiberExpress Manager Connector Modules

### Installation Tips

- > With the 24 fiber LC FiberExpress Manager Module, it is not possible to use pigtailed.

### Packaging

#### Regular version:

- > Each module is supplied with a cable tie
- > Individually packaged in a clear plastic bag inserted in a box

- > Standard shipping packaging is four boxes per carton.

#### Pre-terminated version:

- > Individually packaged in a clear plastic bag inserted in a box
- > Standard shipping packaging is one box
- > A test report is included.

### For More Information

For any other product information call: 1-800-BELDEN-1 or visit us at [www.Belden.com](http://www.Belden.com)

All information is subject to change without notice, since Belden reserves the right to change its products as progress in engineering and manufacturing methods or other circumstances may warrant.

## Ordering Information

### FiberExpress Manager Connector Module

DESCRIPTION	ORDERING NUMBER	ORDERING NUMBER
	Metal Sleeve, Multimode	Zirconia Ceramic, Singlemode
ST type, 6 fibers	AX101089	AX100936
ST type, 12 fibers	AX101187	AX101186
SC Simplex, 6 fibers		AX100943
SC Duplex, 6 fibers	AX101092	AX100944
SC Duplex, 8 fibers	AX101513	AX101512
SC Duplex (ST in), 12 fibers	AX101120	AX101119
SC Duplex, 12 UPC pigtailed		AX101715
SC Duplex, 12 fibers	AX101714	AX101713
LC, 8 fibers	AX101621	AX101620
LC, 12 fibers	AX101528	AX101527
LC, 24 fibers, NEW	AX102306	AX102305
FC, Singlemode/Multimode, 6 fibers		AX100937
FC, Singlemode/Multimode, 8 fibers		AX101482

DESCRIPTION	ORDERING NUMBER	ORDERING NUMBER	ORDERING NUMBER
	Multimode 62.5 μm	Multimode 50 μm	Singlemode
MPO(m)-ST type, 6 pre-terminated	AX101449	AX101450	AX101451
MPO(m)-ST type, 12 pre-terminated	AX101189	AX101190	AX101188
MPO(m)-SC Duplex, 6 pre-terminated	AX101453	AX101454	AX101452
MPO(m)-SC Duplex, 8 pre-terminated	AX101515	AX101516	AX101514
MPO(m)-SC Duplex, 12 pre-terminated	AX101091	AX101114	AX101090
MPO(m)-MT-RJ(m), 12 pre-terminated	AX101525	AX101526	AX101524
MPO(m)-LC, 8 pre-terminated	AX101623	AX101624	AX101622
MPO(m)-LC, 12 pre-terminated	AX101530	AX101531	AX101529
MPO(m)-LC, 24 pre-terminated, NEW	AX102309	AX102308	AX102307
MPO(m)-FC, 8 pre-terminated	AX101587	AX101588	AX101586
	Beige, Multimode	Blue, Singlemode	
MT-RJ, 12 fibers	AX101096	AX101581	