



[www.bradyeurope.com/bmp41](http://www.bradyeurope.com/bmp41)



**BMP™ 41**  
LABEL PRINTER

**One and done**

# One and done

## BMP™41 LABEL PRINTER

### Print it once, print it all, get it done!

The BMP™41 label printer is the rugged, portable solution that gives you the versatility to create your own length or already-sized die-cut and continuous labels anywhere, anytime! The BMP™41 label printer is designed with you in mind. Get your labelling done easier and faster so you can get on with your day. You only need one printer to print everything you need.

Whether you are faced with your jobs for the day or one-off tasks, the BMP™41 printer saves you time and money by printing your labels once and getting it done.

- Quick cartridge loading with already matched ribbon
- Prints up to 250 labels per day at a print speed of 33 mm/second
- Drop-tested to ensure it can withstand any environment

*Brady labels keep you in compliance with appropriate industry-specific regulations.*

### Exceptional material variety and durability

The BMP™41 printer prints durable, true-sized 25 mm wide die-cut or continuous identification to maximize the amount of data on your label. Compatible with up to 10 different industry specified materials that last, the BMP™41 prints for a variety of applications. Key applications include wire marking, sleeving, panel labelling, terminal block, patch panel, general identification and more!



Wide range of materials so you can print all your jobs on one printer

Rugged industrial bumpers with a grab and go grip to be on the move with you

Simple all-in-one, drop-in cartridges for quick and easy supply change and automatic label setup

Large graphical LCD display with backlight to see exactly what you're printing

Rechargeable battery for long lasting power supply

Built-in wizard-based applications and graphics to help create and print labels quickly and easily

QWERTY style keypad and hot keys for easier typing and reducing errors

**Sample of the easy-to-use menu keys:**

Label Type

- General
- Wire Marker
- Flags
- Terminal Block
- Patch Panel
- 66-Block
- 110-Block
- BIX Block
- DesiStrip

Symbol

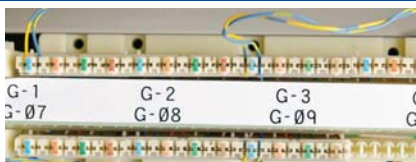
- Arrows
- Datacomm
- Electrical
- International
- Fire
- Mandatory

# Material Overview

## Voice & DataCom ID



Cable Flags

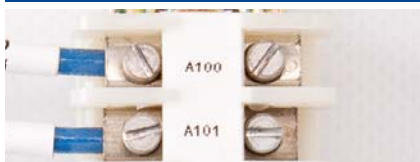


Punch Block & Patch Panel Labels

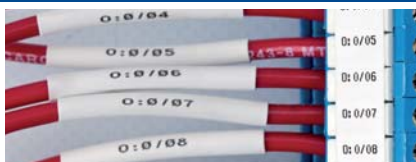


Self-laminating Cable Markers

## Electrical ID



Terminal Block Markers

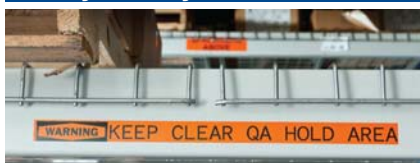


PermaSleeve® Wire Marking Sleeves

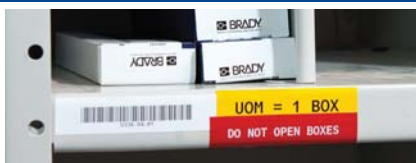


Control Panel & Electrical Panel Labels

## Facility & Safety ID



Indoor / Outdoor Grade Facility & Safety Labels



Warehouse Identification



General Industrial Labels

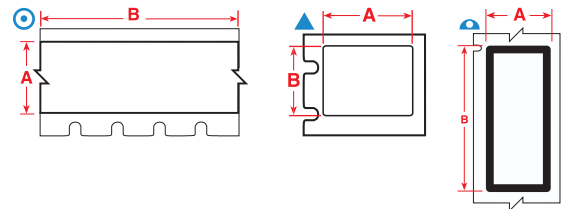
## MATERIAL OVERVIEW

Material	Finish	Temp (°C) (Tested for 30 days)		Additional Features	Application	Approval/Compliance
<b>Heat-shrink Polyolefin Sleeve</b>						
B-342	Matt	-70 °C	130 °C	Heat-shrinkable; Self-Extinguishing. Available in White or Yellow.	Wire & Cable Marking	SAE-AMS-DTL-23053/5 C (class 1); SAE-AS-81531; MIL-STD-202 method 215K; tested per ASTM E162 and ASTM E662; UL224; RoHS-compliant
<b>Nylon Cloth</b>						
B-499	Matt	-40 °C	90 °C	Permanent adhesion; write-on capabilities. Available in White.	Wire & Cable Marking; Laboratory Identification	UL Recognised; CSA Accepted; Halogen Free (DIN VDE 0472/part 815); RoHS-compliant
<b>Polyester</b>						
B-422	Gloss	-40 °C	100 °C	2 mil adhesive recommended for application on textured surfaces. Available in White.	General & Industrial Identification; Rating & Nameplate Labels; Voice & Data Communication	UL Recognised; CSA Accepted; RoHS-compliant
B-428	Matt	-40 °C	120 °C	Designed for rating or serial plates, product information, warranty labels and inventory control labels. Available in Silver.	Rating & Nameplate Labels	UL Recognised; CSA Accepted; AGA Approved; Halogen Free (DIN VDE 0472/part 815); RoHS-compliant
B-483	Gloss	-40 °C	120 °C	Ultra-aggressive adhesive; Designed for powder coated surfaces. Available in White.	General & Industrial Identification; Rating & Nameplate Labels; Voice & Data Communication	UL Recognised; CSA Accepted; RoHS-compliant
<b>Polypropylene</b>						
B-412	Matt	-40 °C	100 °C	Highly durable labels, ideal for wire & cable identification or product inventory identification, where legibility & tensile strength are needed. Available in White.	Voice & Data Communication	RoHS-compliant
<b>Self-laminating Vinyl</b>						
B-427	Matt	-80 °C	60 °C	Self-laminating; Self-extinguishing; Excellent water & oil resistance; Excellent abrasion and smudge resistance. Available in White/Transparent and Yellow/Transparent.	Wire & Cable Marking	UL Recognised; RoHS-compliant
<b>Vinyl</b>						
B-584	Gloss	-40 °C	70 °C	Suitable for outdoor use. Available in White and Yellow.	General & Industrial Identification	RoHS-compliant
B-595	Gloss	-40 °C	82 °C	Available in White, Red, Yellow, Green, Blue, Orange, Black and Clear.	General & Industrial Identification; Pipe Marking	RoHS-compliant
<b>Vinyl Cloth</b>						
B-498	Semi-gloss	-40 °C	80 °C	Removable from flat surfaces; write-on capabilities. Available in White.	Wire & Cable Marking; Laboratory Identification	UL Recognised; RoHS-compliant



### How to read an order reference: example M-31-427-YL

**M** - **31** - **427** - **YL**  
M: Die-cut label      Label size code      Brady material      Optional colour  
MC: Continuous label      number (B-number)



## PATCH PANEL, PUNCH BLOCK AND FACEPLATE LABELS

Create the labels you need in one easy process. Create a fully-formatted serialised punch block label to fit your equipment or label your ports, jacks and outlets with adhesive labels or slide-in strips.

- Ideal for component identification, barcode label and rating plate identification
- Designed to withstand exposure to numerous solvents
- High adhesion to textured metals, powder coated surfaces and low surface energy plastics

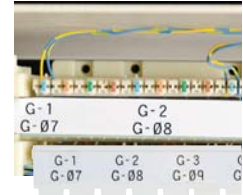


Diagram	Order Reference	Colour	Label Width A (mm)	Label Height B (mm)	Label Length B (m)	Labels per Cartridge/Roll	Additional Features
<b>B-412: Polypropylene Tag</b>							
⊙	MC-375-412	Black on White	9.53	-	6.10 m	1	Non-Adhesive Slide-in Strips
⊙	MC-475-412	Black on White	12.07	-	6.10 m	1	Non-Adhesive Slide-in Strips
⊙	MC-625-412	Black on White	15.88	-	6.10 m	1	Non-Adhesive Slide-in Strips
<b>B-422: Polyester</b>							
⊙	MC-375-422	Black on White	9.53	-	7.62 m	1	Adhesive Stick-on Strips: Outlet, Patch Panel, Cont. Tape, Cut to Size
⊙	MC-475-422	Black on White	12.07	-	7.62 m	1	Adhesive Stick-on Strips: Outlet, Patch Panel, Cont. Tape, Cut to Size
▲	M-89-422	Black on White	12.70	38.10		180	Stick-on Individual Labels
▲	M-7-422	Black on White	12.70	12.70		280	Individual Port Labels
⊙	MC-500-422	Black on White	12.70	-	7.62 m	1	Adhesive Stick-on Strips: Outlet, Patch Panel, Cont. Tape, Cut to Size
⊙	MC-625-422	Black on White	15.88	-	7.62 m	1	Adhesive Stick-on Strips: Outlet, Patch Panel, Cont. Tape, Cut to Size
▲	M-90-422	Black on White	19.05	38.10		180	Stick-on Individual Labels
▲	M-47-422	Black on White	25.40	12.70		480	Stick-on Individual Labels
<b>B-483: Polyester</b>							
▲	M-61-483	Black on White	12.70	50.80		80	Ultra-aggressive adhesive; Designed for powder coated surfaces

## EQUIPMENT, PANEL, COMPONENT AND RATING PLATE LABELS

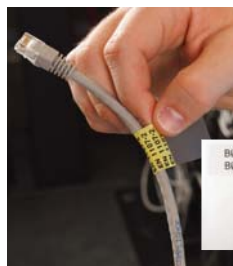
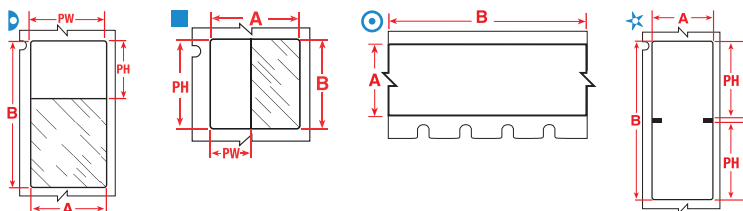
Equipment and component labels are long-lasting, durable materials that make it easy to identify control, steering materials and many more. Ideal for marking backer boards, outlets, racks and more. Rating plate labels create serial or rating plates with barcodes, graphics and more.

- Flexible with high-tack adhesives for easy and long-lasting adhesion
- Various sizes in several durable materials
- Rating plate labels offer a metal looking finish



Diagram	Order Reference	Colour	Label Width A (mm)	Label Height B (mm)	Label Length B (m)	Labels per Cartridge/Roll	Additional Features
<b>B-422: Polyester</b>							
▲	M-89-422	Black on White	12.70	38.10		180	Stick-on Individual Labels
▲	M-7-422	Black on White	12.70	12.70		280	Individual Port Labels
▲	M-90-422	Black on White	19.05	38.10		180	Stick-on Individual Labels
▲	M-47-422	Black on White	25.40	12.70		480	Stick-on Individual Labels
⊙	MC1-1000-422	Black on White	25.40	-	7.62 m	1	Adhesive Stick-on Strips: Outlet, Patch Panel, Cont. Tape, Cut to Size
▲	M-49-422	Black on White	25.40	25.40		260	Adhesive stick-on individual labels
<b>B-428: Metallised Polyester</b>							
▲	M-92-428-BB	Black on Silver	12.70	33.02		239	
▲	M-60-428	Black on Silver	25.40	50.80		140	
<b>B-483: Polyester</b>							
▲	M-61-483	Black on White	12.70	50.80		80	Ultra-aggressive adhesive; Designed for powder coated surfaces
▲	M-60-483	Black on White	25.40	50.80		140	Ultra-aggressive adhesive; Designed for powder coated surfaces
▲	M-47-483	Black on White	25.40	12.70		480	Ultra-aggressive adhesive; Designed for powder coated surfaces
<b>B-595: Vinyl</b>							
⊙	MC-500-595-YL-BK	Black on Yellow	12.70	-	7.62 m	1	Adhesive Stick on Strips, Cut to Size
⊙	MC-500-595-CL-WT	White on Clear	12.70	-	6.10 m	1	Adhesive Stick on Strips, Cut to Size
⊙	MC-750-595-YL-BK	Black on Yellow	19.05	-	7.62 m	1	Adhesive Stick on Strips, Cut to Size
⊙	MC-750-595-CL-WT	White on Clear	19.05	-	6.10 m	1	Adhesive Stick on Strips, Cut to Size
⊙	MC1-1000-595-YL-BK	Black on Yellow	25.40	-	7.62 m	1	Adhesive Stick on Strips, Cut to Size
⊙	MC1-1000-595-CL-WT	White on Clear	25.40	-	6.10 m	1	Adhesive Stick on Strips, Cut to Size

For additional general purpose tapes, see Indoor/Outdoor Grade Facility and Safety Labels on page 10.



## SELF-LAMINATING WIRE & CABLE MARKERS

Self-laminating markers feature a printable zone in white or yellow and a transparent, non printable area that wraps around wires and cables and serves as an overlamine to the printed text.

- Designed to adhere to highly curved surfaces, wires and cables
- Superior resistance to abrasion, handling, solvents, water, oil, dirt and more

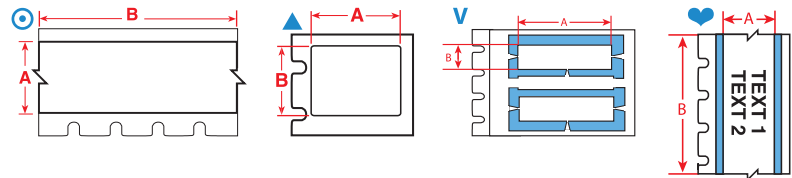
Diagram	Order Reference	Colour	Label Width A (mm)	Label Height B (mm)	Label Length B (m)	Printable Area Width (mm)	Printable Area Height (mm)	Labels per Cartridge/ Roll	Max. Wire Diameter (mm)	For Data Cables Sized to Fit
B-427: Self-laminating Vinyl										
▶	M-102-427	Black on White/Transparent	12.70	31.75		12.70	9.53	200	7.10	CAT 6; 4 pair UTP Copper
▶	M-89-427	Black on White/Transparent	12.70	38.10		12.70	12.70	180	8.10	CAT 6; 4 pair UTP Copper
⊙	MC-750-427	Black on White/Transparent	19.05	-	7.62 m	9.53	-	1	3.00	CAT 6; 4 pair UTP Copper
▶	M-90-427	Black on White/Transparent	19.05	38.10		19.05	12.70	180	8.10	CAT 6; 4 pair UTP Copper
▶	M-53-427	Black on White/Transparent	25.40	101.60		25.40	25.40	70	24.30	50 Pair Copper; 24 Pair Fibre; Backbone
▶	M-53-427-YL	Black on Yellow/Transparent	25.40	101.60		25.40	25.40	70	24.30	50 Pair Copper; 24 Pair Fibre; Backbone
■	M-47-427	Black on White/Transparent	25.40	12.70		9.53	25.40	360	5.10	2 Pair Fibre/Coaxial, Single/Multi-Mode
■	M-48-427	Black on White/Transparent	25.40	19.05		9.53	25.40	200	5.10	2 Pair Fibre/Coaxial, Single/Multi-Mode
▶	M-49-427	Black on White/Transparent	25.40	25.40		25.40	9.53	260	5.10	2 Pair Fibre/Coaxial; Single/Multi-Mode
▶	M-143-427	Black on White/Transparent	25.40	31.80		25.40	12.70	200	6.10	CAT 6; 4 pair UTP Copper
▶	M-91-427	Black on White/Transparent	25.40	38.10		25.40	12.70	180	8.10	CAT 6; 4 pair UTP Copper
▶	M-91-427-YL	Black on Yellow/Transparent	25.40	38.10		25.40	12.70	180	8.10	CAT 6; 4 pair UTP Copper
▶	M-51-427	Black on White/Transparent	25.40	63.50		25.40	19.05	110	14.20	25 pair Copper; 4-12 pair Fibre; Coaxial
▶	M-51-427-YL	Black on Yellow/Transparent	25.40	63.50		25.40	19.05	110	14.20	25 pair Copper; 4-12 pair Fibre; Coaxial



## CABLE FLAGS

Pre-formatted with two printable areas, allowing label to be easily folded around wires to create a two-sided, printed flag.

Diagram	Order Reference	Colour	Label Width A (mm)	Label Height B (mm)	Printable Area Height (mm)	Labels per Cartridge/ Roll	Additional Features
B-499: Nylon Cloth							
★	M-141-499	Black on White	25.40	57.15	25.40	90	Approx. 25.4mm x 25.4 mm resulting flag size



## TERMINAL BLOCK MARKERS

Specially designed markers that offer a highly unique adhesive and vinyl cloth construction for excellent holding power, while still allowing for clean removal and application.

- Specially designed narrow-width continuous label for alignment on terminal blocks and patch panels
- LabelMark™ Software can auto-serialise these labels to help save you time

Diagram	Order Reference	Colour	Label Width A (mm)	Label Length B (m)	Labels per Cartridge/Roll
<b>B-498: Vinyl Cloth</b>					
⊙	MC-240-498	Black on White	6.10	4.88 m	1
⊙	MC-318-498	Black on White	8.08	4.88 m	1
⊙	MC-375-498	Black on White	9.53	4.88 m	1



## PERMASLEEVE® PS WIRE MARKING SLEEVES

These heat-shrink sleeves are the ultimate in marker durability, permanence and aesthetic appearance. Fast shrink rate saves time and costs during installation. Meets SAE-AMS-DTL-23053/5C (class 1), SAE-AS-81531, MIL-STD-202, and tested per ASTM E162, ASTM E662.

- 3:1 heat-shrink sleeve that fits snugly around wires
- Flame-resistant and flame-retardant
- Available as individual die-cut markers or continuous cut-to-length tubing



Diagram	Order Reference	Colour	Label Width A (mm)	Label Height B (mm)	Label Length B (m)	Wire Gauge *	Min. Wire Diameter (mm)	Max. Wire Diameter (mm)	Labels per Cartridge/Roll
<b>B-342: Heat-shrink Polyolefin Sleeve</b>									
♥	MC-125-342	Black on White	5.97	-	2.13 m	22 to 16	1.17	2.80	1
♥	MC-125-342-YL	Black on Yellow	5.97	-	2.13 m	22 to 16	1.17	2.80	1
♥	MC-187-342	Black on White	8.50	-	2.13 m	20 to 10	1.57	3.80	1
♥	MC-187-342-YL	Black on Yellow	8.50	-	2.13 m	20 to 10	1.57	3.80	1
♥	MC-250-342	Black on White	11.15	-	2.13 m	16 to 8	2.39	5.50	1
♥	MC-250-342-YL	Black on Yellow	11.15	-	2.13 m	16 to 8	2.39	5.50	1
♥	MC1-375-342	Black on White	16.38	-	2.13 m	12 to 4	3.18	8.10	1
V	M-125-075-342	Black on White	19.05	5.97	-	22 to 16	1.17	2.80	80
V	M-187-075-342	Black on White	19.05	8.50	-	20 to 10	1.57	3.80	80
V	M-250-075-342	Black on White	19.05	11.15	-	16 to 8	2.39	5.50	80
V	M-375-075-342	Black on White	19.05	16.38	-	12 to 4	3.18	8.10	80

\* Wire gauge based on AWG for THHN wire.

## WRAP AROUND WIRE & CABLE MARKERS

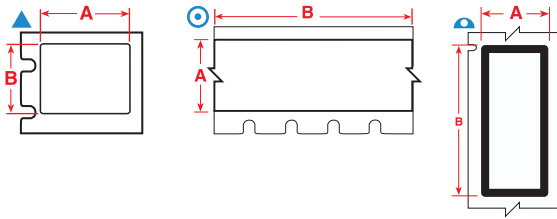
Durable vinyl cloth wrap around wire and cable markers made with an adhesive that allows the markers to be removed cleanly and re-applied if necessary.

- Highly unique adhesive and cloth construction
- Ideal choice for marking both ends of a wire that may need be cut shorter before final termination



Diagram	Order Reference	Colour	Label Width A (mm)	Label Height B (mm)	Wire Gauge *	Max. Wire Diameter (mm)	Labels per Cartridge/Roll
<b>B-498: Vinyl Cloth</b>							
▲	M-7-498	Black on White	12.70	12.70	22 to 16	2.80	240
▲	M-163-498	Black on White	12.70	25.40	12 to 10	5.10	180
▲	M-131-498	Black on White	12.70	25.40	12 to 10	5.10	180
▲	M-11-498	Black on White	19.05	12.70	16 to 10	4.00	220
▲	M-91-498	Black on White	25.40	38.10	10 to 4	7.10	120
▲	M-48-498	Black on White	25.40	19.05	12 to 10	5.10	180
▲	M-49-498	Black on White	25.40	25.40	12 to 10	5.10	160

\* Wire gauge based on AWG for THHN wire.



## CONTROL PANEL AND ELECTRICAL PANEL LABELS

Long-lasting, durable materials to quickly identify control and electrical panels.

Diagram	Order Reference	Colour	Label Width A (mm)	Label Height B (mm)	Label Length B (m)	Labels per Cartridge/Roll
<b>B-422: Polyester</b>						
⊙	MC-625-422	Black on White	15.88	-	7.62 m	1
<b>B-428: Metallised Polyester</b>						
▲	M-47-428	Black on Silver	25.40	12.70		480
▲	M-60-428	Black on Silver	25.40	50.80		140

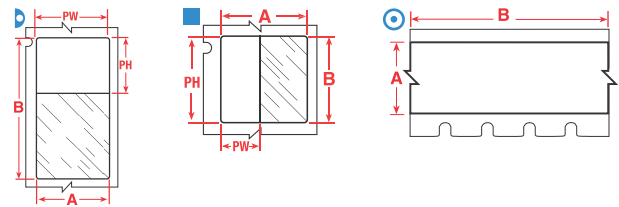


## AUTOMATION & ELECTRICAL COMPONENT MARKERS

Various sizes, colours and label types for marking relays, solenoids, switches, drive motors, and other components.

Diagram	Order Reference	Colour	Label Width A (mm)	Label Height B (mm)	Label Length B (m)	Labels per Cartridge/Roll
<b>B-422: Polyester</b>						
▲	M-89-422	Black on White	12.70	38.10		180
▲	M-7-422	Black on White	12.70	12.70		280
⊙	MC-500-422	Black on White	12.70	-	7.62 m	1
▲	M-90-422	Black on White	19.05	38.10		180
▲	M-47-422	Black on White	25.40	12.70		480
⊙	MC1-1000-422	Black on White	25.40	-	7.62 m	1
▲	M-49-422	Black on White	25.40	25.40		260
<b>B-428: Metallised Polyester</b>						
▲	M-92-428-BB	Black on Silver	12.70	33.02		239
▲	M-47-428	Black on Silver	25.40	12.70		480
▲	M-60-428	Black on Silver	25.40	50.80		140
<b>B-483: Polyester</b>						
▲	M-61-483	Black on White	12.70	50.80		80
▲	M-60-483	Black on White	25.40	50.80		140
▲	M-47-483	Black on White	25.40	12.70		480
<b>B-499: Nylon Cloth</b>						
▲	M-130-499	Black on White	9.53	20.96		220
⊙	MC-375-499	Black on White	9.53	-	4.88 m	1
▲	M-131-499	Black on White	12.70	25.40		180
⊙	MC-500-499	Black on White	12.70	-	4.88 m	1
▲	M-11-499	Black on White	19.05	12.70		220
⊙	MC-750-499	Black on White	19.05	-	4.88 m	1
▲	M-84-499	Black on White	22.86	12.70		200
▲	M-128-499	Black on White	25.40	48.26		100
<b>B-595: Vinyl</b>						
⊙	MC-500-595-OR-BK	Black on Orange	12.70	-	7.62 m	1
⊙	MC-750-595-OR-BK	Black on Orange	19.05	-	7.62 m	1
⊙	MC1-1000-595-OR-BK	Black on Orange	25.40	-	7.62 m	1
⊙	MC-500-595-YL-BK	Black on Yellow	12.70	-	7.62 m	1
⊙	MC-750-595-YL-BK	Black on Yellow	19.05	-	7.62 m	1
⊙	MC1-1000-595-YL-BK	Black on Yellow	25.40	-	7.62 m	1





## SELF-LAMINATING WIRE & CABLE MARKERS

Self-laminating markers feature a printable zone in white or yellow and a transparent, non printable area that wraps around wires and cables and serves as an overlaminate to the printed text.

- Designed to adhere to highly curved surfaces, wires and cables
- Superior resistance to abrasion, handling, solvents, water, oil, dirt and more

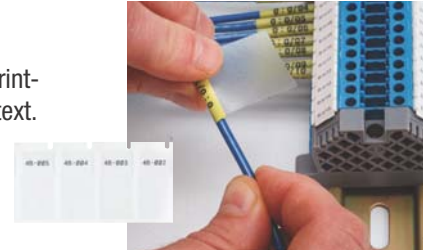


Diagram	Order Reference	Colour	Label Width A (mm)	Label Height B (mm)	Label Length B (m)	Printable Area Width (mm)	Printable Area Height (mm)	Wire Gauge *	Max. Wire Diameter (mm)	Labels per Cartridge/Roll
B-427: Self-laminating Vinyl										
▶	M-102-427	Black on White/Transparent	12.70	31.75	-	12.70	9.53	10 to 4	7.10	200
▶	M-89-427	Black on White/Transparent	12.70	38.10	-	12.70	12.70	3/0 to 400 kcmil	8.10	180
⊙	MC-750-427	Black on White/Transparent	19.05	-	7.62	9.53	-	16 to 10	3.00	1
■	M-11-427	Black on White/Transparent	19.05	12.70	-	9.53	12.70	16 to 10	3.00	360
▶	M-90-427	Black on White/Transparent	19.05	38.10	-	19.05	12.70	10 to 4	8.10	180
■	M-47-427	Black on White/Transparent	25.40	12.70	-	9.53	25.40	12 to 10	5.10	360
▶	M-136-427	Black on White/Transparent	25.40	19.05	-	25.40	9.53	16 to 10	3.00	340
■	M-48-427	Black on White/Transparent	25.40	19.05	-	9.53	25.40	12 to 10	5.10	200
▶	M-49-427	Black on White/Transparent	25.40	25.40	-	25.40	9.53	12 to 10	5.10	260
▶	M-143-427	Black on White/Transparent	25.40	31.80	-	25.40	12.70	10 to 4	6.10	200
▶	M-91-427	Black on White/Transparent	25.40	38.10	-	25.40	12.70	10 to 4	8.10	180
▶	M-91-427-YL	Black on Yellow/Transparent	25.40	38.10	-	25.40	12.70	10 to 4	8.10	180
▶	M-51-427	Black on White/Transparent	25.40	63.50	-	25.40	19.05	3 to 2/0	14.20	110
▶	M-51-427-YL	Black on Yellow/Transparent	25.40	63.50	-	25.40	19.05	3 to 2/0	14.20	110
▶	M-53-427	Black on White/Transparent	25.40	101.60	-	25.40	25.40	3/0 to 400 kcmil	24.30	70
▶	M-53-427-YL	Black on Yellow/Transparent	25.40	101.60	-	25.40	25.40	3/0 to 400 kcmil	24.30	70

\* Wire gauge based on AWG for THHN wire.

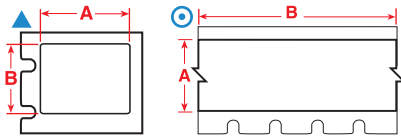


### Magnet Accessory Available

The BMP™41 printer offers a heavy-duty magnet accessory that allows you to go hands free.

Apply the magnet to the back of your printer and then simply place on a magnetic surface.

# Facility & Safety Identification



## BIN, STORAGE, REFLECTIVE AND GENERAL INDUSTRIAL LABELS

Choose from several materials and types of labels that offer an aggressive adhesive for use in commercial and industrial applications. Bin, storage & industrial labels are ideal for commercial / industrial applications, while reflective can be used for low light or inclement weather conditions.

- Recommended for low surface energy and textured surfaces
- Reflective is ideal for outdoor utility poles and pedestals, equipment on site and rooftop equipment

Diagram	Order Reference	Colour	Label Width A (mm)	Label Height B (mm)	Label Length B (m)	Labels per Cartridge/Roll
<b>B-422: Polyester</b>						
⊙	MC-375-422	Black on White	9.53	-	7.62 m	1
⊙	MC-475-422	Black on White	12.07	-	7.62 m	1
⊙	MC-500-422	Black on White	12.70	-	7.62 m	1
▲	M-7-422	Black on White	12.70	12.70	-	280
▲	M-89-422	Black on White	12.70	38.10	-	180
▲	M-90-422	Black on White	19.05	38.10	-	180
⊙	MC1-1000-422	Black on White	25.40	-	7.62 m	1
▲	M-47-422	Black on White	25.40	12.70	-	480
▲	M-49-422	Black on White	25.40	25.40	-	260
<b>B-483: Polyester</b>						
▲	M-61-483	Black on White	12.70	50.80	-	80
▲	M-47-483	Black on White	25.40	12.70	-	480
▲	M-60-483	Black on White	25.40	50.80	-	140

Diagram	Order Reference	Colour	Label Width A (mm)	Label Height B (mm)	Label Length B (m)	Labels per Cartridge/Roll
<b>B-499: Nylon Cloth</b>						
▲	M-11-499	Black on White	19.05	12.70	-	220
▲	M-84-499	Black on White	22.86	12.70	-	200
▲	M-128-499	Black on White	25.40	48.26	-	100
<b>B-584: Reflective Tape</b>						
⊙	MC-500-584	Black on White	12.70	-	6.10 m	1
⊙	MC-500-584-YL	Black on Yellow	12.70	-	6.10 m	1
⊙	MC-750-584	Black on White	19.05	-	6.10 m	1
⊙	MC-750-584-YL	Black on Yellow	19.05	-	6.10 m	1
<b>B-595: Vinyl</b>						
⊙	MC-500-595-RD-WT	White on Red	12.70	-	7.62 m	1
⊙	MC-750-595-RD-WT	White on Red	19.05	-	7.62 m	1
⊙	MC1-1000-595-RD-WT	White on Red	25.40	-	7.62 m	1



## INDOOR/OUTDOOR GRADE FACILITY & SAFETY LABELS

Pliable vinyl that conforms well to smooth or rough surfaces such as pipes, walls, doors, panels, shelving, bins and equipment. Lasting up to 8-10\* years outdoors, these labels offer excellent resistance to oils, detergents, dirt, grime and many solvents.

- Durable, low-shrink vinyl with our most aggressive adhesive
- Works for a variety of applications, including 5S labels, pipe markers, arc flash, chemical labels and more

Diagram	Order Reference	Colour	Label Width A (mm)	Label Length B (m)	Labels per Cartridge/Roll
<b>B-595: Vinyl</b>					
⊙	MC-500-595-CL-BK	Black on Clear	12.70	6.10 m	1
⊙	MC-750-595-CL-BK	Black on Clear	19.05	6.10 m	1
⊙	MC1-1000-595-CL-BK	Black on Clear	25.40	6.10 m	1
⊙	MC-500-595-OR-BK	Black on Orange	12.70	7.62 m	1
⊙	MC-750-595-OR-BK	Black on Orange	19.05	7.62 m	1
⊙	MC1-1000-595-OR-BK	Black on Orange	25.40	7.62 m	1
⊙	MC-500-595-WT-BK	Black on White	12.70	7.62 m	1
⊙	MC-750-595-WT-BK	Black on White	19.05	7.62 m	1
⊙	MC1-1000-595-WT-BK	Black on White	25.40	7.62 m	1
⊙	MC-500-595-YL-BK	Black on Yellow	12.70	7.62 m	1
⊙	MC-750-595-YL-BK	Black on Yellow	19.05	7.62 m	1
⊙	MC1-1000-595-YL-BK	Black on Yellow	25.40	7.62 m	1
⊙	MC-500-595-WT-RD	Red on White	12.70	7.62 m	1
⊙	MC-750-595-WT-RD	Red on White	19.05	7.62 m	1
⊙	MC1-1000-595-WT-RD	Red on White	25.40	7.62 m	1

Diagram	Order Reference	Colour	Label Width A (mm)	Label Length B (m)	Labels per Cartridge/Roll
<b>B-595: Vinyl</b>					
⊙	MC-500-595-BK-WT	White on Black	12.70	7.62 m	1
⊙	MC-750-595-BK-WT	White on Black	19.05	7.62 m	1
⊙	MC1-1000-595-BK-WT	White on Black	25.40	7.62 m	1
⊙	MC-500-595-BL-WT	White on Blue	12.70	7.62 m	1
⊙	MC-750-595-BL-WT	White on Blue	19.05	7.62 m	1
⊙	MC1-1000-595-BL-WT	White on Blue	25.40	7.62 m	1
⊙	MC-500-595-CL-WT	White on Clear	12.70	6.10 m	1
⊙	MC-750-595-CL-WT	White on Clear	19.05	6.10 m	1
⊙	MC1-1000-595-CL-WT	White on Clear	25.40	6.10 m	1
⊙	MC-500-595-GN-WT	White on Green	12.70	7.62 m	1
⊙	MC-750-595-GN-WT	White on Green	19.05	7.62 m	1
⊙	MC1-1000-595-GN-WT	White on Green	25.40	7.62 m	1
⊙	MC-500-595-RD-WT	White on Red	12.70	7.62 m	1
⊙	MC-750-595-RD-WT	White on Red	19.05	7.62 m	1
⊙	MC1-1000-595-RD-WT	White on Red	25.40	7.62 m	1

\* Average expected outdoor life of product will depend on user definition of failure, climatic conditions, mounting techniques and material colour. The 8 to 10 year outdoor durability applies to the vinyl label stock only; ribbon durability will vary. A polyester overlaminates is recommended for harsh environments - long term exposure to wind and rain.

## PRINTER PART NUMBERS

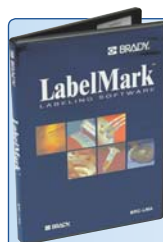
Article No.	Order Reference	Description
133254	BMP41-KIT-EU	BMP41 EU Label Printer
711213	BMP41-KIT-UK	BMP41 UK Label Printer
711214	BMP41-KIT-EU-LM	BMP41 EU Label Printer with LabelMark
711215	BMP41-KIT-UK-LM	BMP41 UK Label Printer with LabelMark
711216	BMP41-KIT-EU-LM-HC	BMP41 EU Label Printer with LabelMark and Hard Case
711217	BMP41-KIT-UK-LM-HC	BMP41 UK Label Printer with LabelMark and Hard Case

Printer Kit supplied with Nickel Battery Pack, MC1-1000-595-WT-BK cartridge, USB cable, AC adapter, Power Cord, Product CD, Brady Printer Drivers CD and Quick Start Guide. LabelMark Software Optional.



## BMP41 ACCESSORIES

Article No.	Order Reference	Description
114883	M41-50-71-AC-BC-NA	AC Adaptor - NA 120V
133255	BMP41-BATT	BMP41 Battery
133257	BMP41-HC	BMP41 Hard Case
134176	BMP41-MAGNET	BMP41 Magnet
143114	BMP41-BMP50-USB	BMP41-BMP50 Series USB Cable
710612	M41-50-71-AC-BC-EU	AC Adaptor - Europe 220V
710613	M41-50-71-AC-BC-UK	AC Adaptor - UK 240V
711222	BMP41-QC-EU	BMP41 EU External Battery Quick Charger
711223	BMP41-QC-UK	BMP41 UK External Battery Quick Charger



**Brady's LabelMark™ Labelling Software** lets you easily design, edit and print labels for Asset ID, Component Marking, Telecom/ Datacom Labelling, Wiremarkers and more. Integrates completely with Microsoft® Office, Autocad® applications and more. You can download more detailed information on our LabelMark Labelling Software on [www.bradyeurope.com](http://www.bradyeurope.com).

## PRINTER TECHNICAL DATA

The BMP™41 Label Printer is a rugged, portable solution that gives you the versatility to create die-cut or continuous labels up to 25 mm wide, anywhere, anytime! Whether you are faced with your jobs for the day or one-off tasks, the BMP™41 printer is the one device for all of your labelling jobs - from wire marking and general ID to multi-area labels such as patch panel or terminal block and more.

**Print it once, print it all, get it done!**

Specifications	
Print Technology	Thermal Transfer
Print Resolution (dpi)	300 dpi
Print Speed (mm/sec)	33 mm/second
Colour Capability	Monocolour
Continuous vs Die-cut Labels	Continuous Tape & Die Cut Labels
Max. Label Width	25.40 mm
Max. Print Length	990 mm
Recommended Usage/ Labels per Day	250
Stand-alone Printing (Detached from PC)	Yes
Connectivity Options	USB
PC Connectivity	Yes
Printing Modes	Wire Wrap, Terminal Block, Patch Panel, Flags, General, 66-Block, 110-Block, DesiStrip
Printing Functions	Print Preview, Serialisation, Date/Time Stamp, Fixed Length, Mirror, Vertical, Rotate, Auto Format, Multi-copy, Banner, Frame Feature
Bar Code Capability	Code 39 & UCC 128 Stand-alone, additional via software
Built-in Symbols	445
Software Compatibility	LabelMark
Physical Properties	
Depth x Height x Width	90 mm x 290 mm x 150 mm
Weight (kg)	1.3
Keyboard	QWERTY
Display	Large backlit screen
Cutter	Standard, Built-in, Manual
Warranty	2 years

## ELECTRICAL KIT

Article No.	Order Reference	Description
711218	BMP41-KIT-EU-ELEC	BMP41 EU Label Printer Electrical Kit
711219	BMP41-KIT-UK-ELEC	BMP41 UK Label Printer Electrical Kit

Kit includes one of each

BMP41 EU Label Printer <b>or</b> BMP41 UK Label Printer	
BMP41-HC	BMP41 Hard Case
BMP41-MAGNET	BMP41 Magnet
LM5 Std	LabelMark 5 Standard Labelling Software
M-91-427	Black on White/Transparent Self-laminating Vinyl, 25.40 mm x 38.10 mm, 180 labels / Cartridge
MC1-1000-595-WT-BK	Black on White Vinyl, 25.40 mm x 7.62 m, 1 / Cartridge
M-131-499	Black on White Nylon Cloth, 12.70 mm x 25.40 mm, 180 labels / Cartridge

## VOICE & DATACOM KIT

Article No.	Order Reference	Description
711220	BMP41-KIT-EU-DATA	BMP41 EU Label Printer Voice & Data Kit
711221	BMP41-KIT-UK-DATA	BMP41 UK Label Printer Voice & Data Kit

Kit includes one of each

BMP41 EU Label Printer <b>or</b> BMP41 UK Label Printer	
BMP41-HC	BMP41 Hard Case
BMP41-MAGNET	BMP41 Magnet
LM5 Std	LabelMark 5 Standard Labelling Software
M-48-427	Black on White/Transparent Self-laminating Vinyl, 25.40 mm x 19.05 mm, 200 labels / Cartridge
MC1-1000-595-WT-BK	Black on White Vinyl, 25.40 mm x 7.62 m, 1 / Cartridge
MC-375-422	Black on White Polyester, 9.53 mm x 7.62 m, 1 / Cartridge

# Brady Corporation

Our mission is To Identify and Protect Premises, Products and People



## Company Overview

BRADY was founded in 1914 in Eau Claire, Wisconsin, as W.H. BRADY Co., and renamed BRADY Corporation in 1998. The company began selling products internationally in 1947. In 1984, BRADY went public, with stock trading on the Nasdaq Stock Market, and in 1999, moved trading of its stock to the New York Stock Exchange, where it trades under the symbol BRC. The company's global headquarters is in Milwaukee, Wisconsin.

## Brady manufactures and markets:

- products for identification and safety applications such as signs and markers, and printing systems and software to produce identification products on site and on demand.
- products for wire identification, including labelling materials and tools for wire and cable marking in the electrical and telecommunication markets
- high-performance identification products, including labels and signs that remain legible and highly adhesive even in harsh environments
- precision die-cut parts, including custom die-cut and slit materials for use in mobile handset, consumer electronics, medical, hard disk drive and automotive markets
- identify people and enhance security by ensuring the right persons are in the right places at the right time

## Operations – Some facts:

- 6500 employees around the world
- Operations in 29 countries
- Distribution in more than 100 countries through more than 4,400 distributor partners



WHEN PERFORMANCE MATTERS MOST™

### BRADY Africa

361 Olympic Duel,  
Northlands Business Park  
Newmarket Road  
Randburg  
Tel: +27 11 704 3295  
Fax: +27 86 501 7775

### BRADY Benelux

Industriepark C/3  
Lindestraat 20  
9240 Zele, Belgium  
Tel. +32 (0) 52 45 78 11  
Fax +32 (0) 52 45 78 12

### Brady Central & Eastern Europe

Na Pántoch 18  
831 06 Bratislava, Slovakia  
Tel. +421 2 3300 4800  
Fax +421 2 3300 4801

### BRADY Denmark

Svendborgvej 39D  
5260 Odense S  
Tel. +45 66 14 44 00  
Fax +45 66 14 44 50

### BRADY France

Parc EURO CIT  
45, avenue de l'Europe  
59436 Roncq Cedex  
Tel. +33 (0) 3 20 01 08 70  
Fax +33 (0) 3 20 01 08 76

### BRADY Germany

Brady-Straße 1  
63329 Egelsbach  
Tel. +49 (0) 6103 7598 660  
Fax +49 (0) 6103 7598 670

### BRADY Hungary

Puskás Tivadar u. 4.  
2040 Budaörs  
Tel. +36 23 500 275  
Fax +36 23 500 276

### BRADY Italy

Via Degli Abeti 44  
20064 Gorgonzola (MI)  
Tel: +39 02 26 00 00 22  
Fax: +39 02 25 75 351

### BRADY Middle East FZE

PO BOX 18015  
Jebel Ali, Dubai, UAE  
Tel. +971 4881 2524  
Fax +971 4881 3183

### BRADY Norway

Kjeller Vest 2  
2007 Kjeller  
Tel. +47 70 13 40 00  
Fax +47 70 13 40 01

### BRADY Romania

World Trade Center  
Piata Montreal, nr 10  
Intrarea F, Etajul 1, Birou 1.16,  
Sector 1,  
Bucharest, 011469  
Tel: +40 21 202 3032  
Fax: +40 21 202 3100

### BRADY Russia

Avrora Business Park, Office 2305  
82/2, Sadovnicheskaya Street  
115035 Moscow  
Tel: +7 495 225 93 62

### BRADY Spain & Portugal

Diputación, 260  
08007 Barcelona, Spain  
Tel. + 34 900 902 993  
Fax + 34 900 902 994

### BRADY Sweden

Vallgatan 5  
170 67 Solna  
Tel. +46 (0) 8 590 057 30  
Fax +46 (0) 8 590 818 68

### BRADY Turkey

Selvili Sok. No: 3/4  
4. Levent Istanbul 34330  
Tel. +90 212 264 02 20 / 264 02 21  
Fax +90 212 270 83 19

### BRADY UK & Ireland

Wildmere Industrial Estate  
Banbury, Oxon – OX16 3JU, UK  
Tel. +44 (0) 1295 228 288  
Fax +44 (0) 1295 228 100

### BRADY WORLDWIDE

Australia . . . . . 612-8717-6300  
Brazil . . . . . 55-11-3686-4720  
Canada . . . . . 1-800-263-6179  
China (Beijing) . . . . . 86-10-6788-7799  
China (Shanghai) . . . . . 86-21-6886-3666  
China (Wuxi) . . . . . 86-510-528-2222  
Hong Kong . . . . . 852-2359-3149  
Japan . . . . . 81-45-461-3600  
Korea . . . . . 82-31-451-6600  
Latin America . . . . . 1-414-540-5560  
Malaysia . . . . . 60-4-646-2700  
Mexico . . . . . 525-399-6963  
New Zealand . . . . . 61-2-8717-2200  
Philippines . . . . . 63-2-658-2077  
Singapore . . . . . 65-6477-7261  
Taiwan . . . . . 886-3-327-7788  
Thailand . . . . . 66-2-793-9200  
USA . . . . . 1-800-537-8791

Your distributor

© 2013 Brady Worldwide, Inc. All Rights Reserved.

EUR-M-427-EN 21/08/2013

