

TLS 2200[®] TLS PC LINK[™]

*Thermal Labeling
Systems*



 **BRADY**[®]

Visit
www.tls2200.com
and register to
win a **TLS 2200** or
a **TLS PC Link**
printer

TLS Thermal La

A clean cut every time.

The TLS thermal labeling systems feature a built-in, easy-to-use cutter that not only lets you cut labels quickly and cleanly, but eliminates wasted materials and registration problems.

High print quality.

Both printers give you 203 dots-per-inch resolution for permanent, quick and clear printing, label after label.

Replace ribbons in seconds.



TLS2200®

Thermal Labeling System

FEATURES

Store labels and create lists.

The TLS2200 printer's internal memory allows you to create and save legends in lists and recall them with only a few keystrokes.

Easy to handle, easy to use.

Handheld, lightweight and easy to use, the TLS2200 printer lets you print whatever you want, whenever you want. And it reads the type, size and style of labels you're using and automatically adjusts itself — without wasting material.

PC compatibility.

New PC compatibility allows you to print directly from Brady LabelMark™ software. Now you can import lists from a spreadsheet to LabelMark and print directly to the TLS2200 printer.

Portable bar coding.

Never be tied to one location again. Now you can have permanent, quick and crisp bar code labels whenever and wherever you want them.

Continuous labeling.

The TLS2200 system provides continuous labeling with fixed length and banner printer options. Print up to 50 characters using the largest font size, on continuous labels up to 4 feet long, or customize the length of the label to any size you need.

Autotext sizing.

Autotext sizing allows the TLS2200 printer to read your label style, select a suitable type size and register it for printing — instantly.



beling Systems

More than 300 stock label sizes.



No calibration required.

Brady's patented smart-cell label identification gives these printers the ability to automatically recognize label sizes and printer settings, eliminating wasted time and materials.

No more smearing.

With the added benefit of thermal transfer printing, you no longer need to worry about delicately handling your materials to keep them from smearing.

Upgradeable firmware.

Printer firmware enhancements are user upgradeable for FREE, via www.tls2200.com.



TLSPCLink™

Thermal Labeling System

FEATURES

Includes LabelMark™ labeling software.

Import graphics such as company logos, create templates for rating plate labels, print barcode symbologies, and import label lists using ASCII and ODBC data import capabilities.

Desktop or portable versatility.

The TLS PC Link can be connected to a desktop PC, and used with Brady labeling software, or any other Windows™ application. It also can be integrated with hand-held equipment such as wire testers, electrical meters, and medical devices.

Built-in Programming Language.

Brady Programming Language (BPL) provides a communication language where the end-user can create their own programs and send controls down to the printer for printing labels. The language allows the printer to be integrated with non-Windows based equipment.

Easy to integrate for a complete ID solution.

Tools included for integration include Labelmark Labeling Software, Windows drivers, BPL programmer's guide, communications cable, and belt-carrying strap.

On-board battery charging circuitry.

The AC power supply charges the battery, so there is no need to purchase an external charger.

TLS2200® THERMAL LABELING SYSTEM



TLS2200 Thermal Labeling System

Part Number	Description
TLS2200	Printer (system includes hard case, R6210 ribbon, battery pack, battery charger, Quick Start Guide, manual, communications cable, test labels (PTL-19-423), one cleaning card.)

Adding to its long line of quality performance printers, Brady introduces the ultimate answer to your toughest labeling challenges. The TLS2200 system offers the light weight (2.75 lb./1.25 kg) of a hand-held printer, while providing capabilities such as thermal transfer printing, bar coding and multiple material configurations. New features include memory, banner printing and PC connectivity. Memory makes your work easier by allowing you to create and save legends in lists and then recall them with only a few keystrokes.

- ▶ Weight 2.75 lbs. (1.25 kg)
- ▶ Thermal transfer print mechanism 203 dpi (8 dots/mm)
- ▶ Custom TrueType font
- ▶ Labels up to 2" wide (50.8 mm)
- ▶ Print width 1.81" (46 mm)
- ▶ Print length up to 54" (1371 mm)
- ▶ Two line liquid crystal display (LCD), 16 characters wide
- ▶ Operating temperature range: 40°F to 120°F (4°C - 49°C)
- ▶ UL and CUL listed battery charger - 120v/60hz input 9VDC 183ma output
- ▶ FCC Class A approved
- ▶ Prints over 500 labels between battery charges
- ▶ 6 month warranty
- ▶ Adjustable for 6 different widths of labels
- ▶ Built-in industrial label cutter
- ▶ Patent numbers D409; 230; 5,918,989; 5,951,177; 6,113,293 and 6,142,686

ACCESSORIES

TLS2200 Thermal Labeling System Accessories

Part Number	Description
TLS2200-AC	AC adapter
TLS2200-BC	Battery charger
TLS2200-BP	Battery pack
TLS2200-DC	Dust Cover
TLS2200-HC	Hard side carrying case
TLS2200-QC	Quick charger for battery
TLS2200-SC	Soft side users case
TLS2200-CABLE	Communications cable
TLS2200-UPDISKS	Upgrade disks (includes 3.5" disks)
TLS2200-UPKIT	Upgrade kit (includes 3.5" disks and cable)
PCK-5	Cleaning kit (includes 5 cleaning cards)



TLS2200-SC

TLS2200-AC

▶ PRINTING OPTIONS

Variable Font Sizes*

Font sizes range from 1 (4 point) to 19 (72 point). The maximum font size available depends on factors such as label size, number of characters, number of lines, as well as font sizes in other lines.

Autotext Sizing

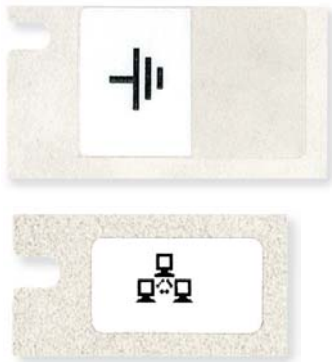
The TLS2200 thermal labeling system uses an automatic font sizing feature called autotext sizing. As you enter characters on the LCD, it instantly reads your label style, selects the most suitable type size and registers it for printing.

Overriding Autotext

If you wish to select a specific font size for your label, the autotext feature can easily be overridden on a line-by-line basis.

Symbols

Standard electrical and telecommunication symbols



Banner Printing



	These materials have static dissipative adhesives.
	These materials are UL recognized.
	These materials are CSA approved.
	These materials are AGA approved.

* An alternative electrical/datacomm font size set (1/8", 1/4", 1/2", 3/4", 3/8", 3/16", 7/16" and 1.0") can be downloaded for free from the tls2200.com website.

▶ VARIABLE FONT SIZES

Font sizes range from 1 (4 point) to 19 (72 point). The maximum font size available depends on factors such as label size, number of characters, number of lines, as well as font sizes in other lines.

Font Number	Point Size	Print Sample
1	4	ABC 12345
2	5	ABC 12345
3	6	ABC 12345
4	7	ABC 12345
5	9	ABC 12345
6	10	ABC 12345
7	11	ABC 12345
8	13	ABC 12345
9	14	ABC 12345
10	17	ABC 12345
11	20	ABC 12345
12	23	ABC 12345
13	26	ABC 12345
14	28	ABC 1234
(PC Link Only) 15	35	ABC 12
15	36	ABC 12
16	45	ABC 1
17	51	ABC 1
18	56	ABC
(PC Link Only) 19	70	ABC
19	72	ABC

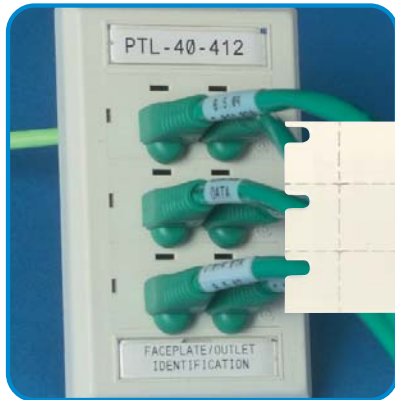
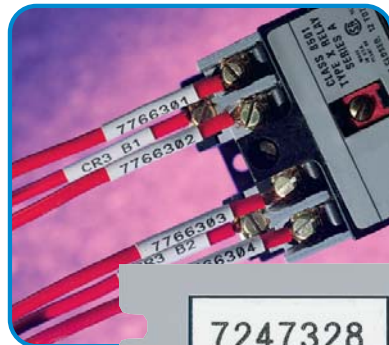
TLS2200®/TLS PC LINK™ THERMAL LABELING SYSTEMS

▶ PRINTING OPTIONS

Industrial Bar Code Labeling



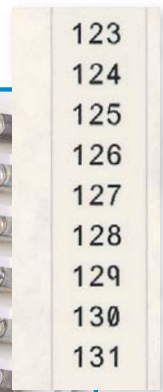
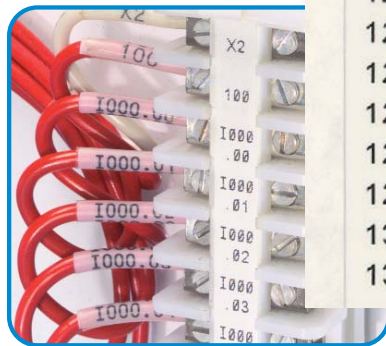
Heat Shrink Sleeving



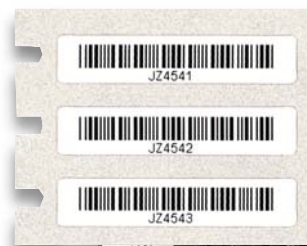
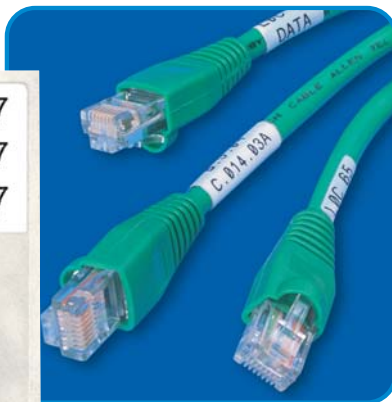
Desi-Strip Insert

C.012.04
A-DATA B-VOICE
C.012.04
A-DATA B-VOICE
C.012.04
A-DATA B-VOICE

Terminal Block



Wire and Cable Marking



Bar Code



Centrifugal Tube Identification



PROA #28
LOT: 328
3-28-02

PROA #29
LOT: 328
3-28-02

TLS2200®/TLS PC LINK™ THERMAL LABELING SYSTEMS

CONTINUED

▶ PRINTING OPTIONS CONTINUED

Static Dissipative PROM Label

PTLSL-17-473



Polyimide Board Label

PTL-9-426



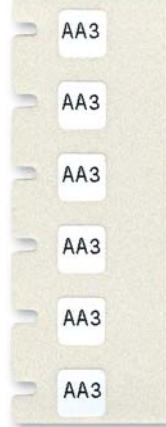
Faceplate ID & Symbols

PTL-7-423



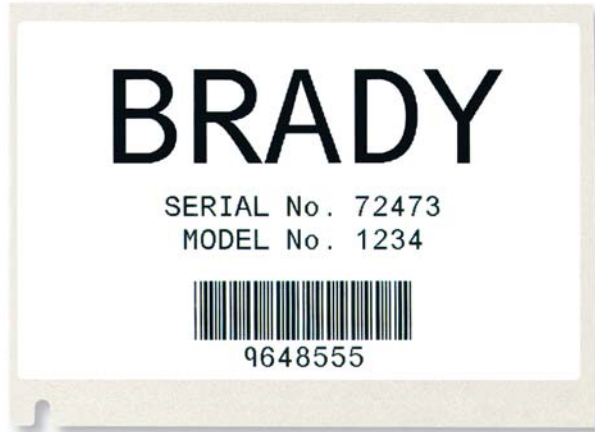
Static Dissipative Component Label

PTL-1-473



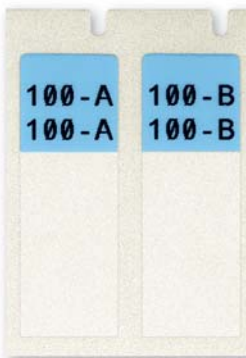
General Industrial Labeling

PTL-37-422



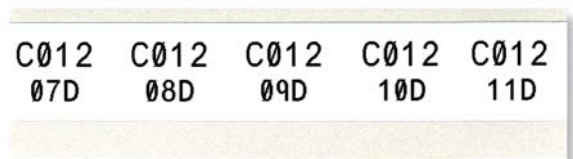
Self-Laminating Wire ID

PTL-29-427-BL



Patch Panel Labels

PTL-8-422



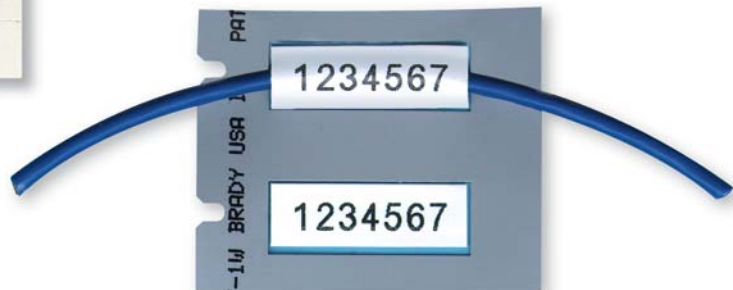
Tear-Resistant Tags

PTL-12-109



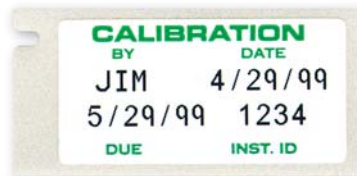
Heat-Shrink Sleeving

PSPT-187-1W



Pre-Printed Labels

PTL-30-423-CALI



TLS PC LINK™ THERMAL LABELING SYSTEM



TLS PC Link Thermal Labeling System

Part Number	Description
TLSPC	Printer (system includes LabelMark™ labeling software, rechargeable battery pack, power supply/battery charger, R6210 ribbon, sample labels (PTL-19-423), Quick Start Guide, manuals, communications cable, and Windows drivers.)

Introducing the newest member of the TLS2200 printer family, the TLS PC Link Thermal Labeling System offers a rugged, small and lightweight desktop/portable solution. The printer provides capabilities such as thermal transfer printing, bar coding, and multiple material configurations. The TLS PC Link printer utilizes all of the available TLS2200 materials and ribbons, and also runs the latest bulk rolls of material as well. The included Windows™ drivers allow the unit to print labels from both LabelMark™ (included with TLS PC Link™) and Codesoft™ software, or any Windows software application available. In addition, the printer has its own printer control language, allowing the unit to be integrated with a piece of equipment and precisely printing labels wherever and whenever they are needed. The firmware is upgradeable through the mini-Din serial jack, and the unit operates off AC power or the included rechargeable battery.

- ▶ Weight 2.50 lbs. (1.14 kg)
- ▶ Thermal Transfer print mechanism 203 dpi (8 dots/mm)
- ▶ Custom TrueType font
- ▶ Labels up to 2" wide (50.8 mm)
- ▶ Print width 1.81" (46 mm)
- ▶ Print length up to 6" (152.4 mm)
- ▶ Operating temperature range: 40F to 120F (4C-49C)
- ▶ UL and CUL listed AC adapter/battery charger - 120V/60hz input 12VDC 3000mA output
- ▶ FCC Class A approved
- ▶ Prints over 500 labels between battery charges
- ▶ Adjustable for 6 different widths of labels
- ▶ Built-in industrial label cutter
- ▶ 6 month warranty
- ▶ Patent numbers 5,918,989; 5,951,177; 6,113,293 and 6,142,686

ACCESSORIES

TLS PC Link Thermal Labeling System Accessories

Part Number	Description
TLSPC-AC	Power supply/battery charger
TLSPC-BP	Rechargeable battery pack
TLSPC-CABLE	Communications cable
PCK-5	Cleaning Kit (includes 5 cleaning cards)

LABELMARK™ LABELING SOFTWARE Included with TLS PC Link

LabelMark labeling software offers features that make creating labels efficient and accurate. This program, written specifically for identification applications in the telecommunication, industrial and electrical markets was designed with the user in mind.

Easy to Use Graphical Interface Label Design

- ▶ Option for line-edit or free-form mode for label design
- ▶ Several common barcode symbologies available
- ▶ Ability to import graphical images
- ▶ ASCII and ODBC data import capabilities

Label Editing

- ▶ Easy to use single screen editing
- ▶ Multiple document interface allowing working with different labels at the same time
- ▶ Ability to flip/flop data on label (i.e. flip/flop "to"/"from" order)

Label Printing

- ▶ Works with all Brady media, stock and custom formats
- ▶ Works with a variety of different printers to suit various applications
- ▶ Direct printing to Brady's TLS2200™ and TLS PC Link™ printers

TLS2200®/TLS PC LINK™ THERMAL LABELING SYSTEMS

RIBBONS

TLS2200 / TLS PC Link Thermal Labeling Systems Ribbons

Part Number	Description	Length
R4310	R4310 black ribbon	75ft (22.9m)
R6010	R6010 black ribbon	75ft (22.9m)
R6210	R6210 black ribbon	75ft (22.9m)
R4410B	R4410 blue ribbon	75ft (22.9m)
R4410R	R4410 red ribbon	75ft (22.9m)
R4410W	R4410 white ribbon	75ft (22.9m)

TLS2200/TLS PC Link Ribbon Cross Reference Guide

B#’s	Material	Series R4310	Series R4410 (colors)	Series R6010	Series *R6210
109	Tag	●			
321	Polyolefin				●
342	Polyolefin	●			
351	Vinyl				●
352	Vinyl			●	
400	Vinyl Cloth	●			
412	Polypropylene				●
422	Polyester		●UL/CSA	●UL/CSA	△
423	Polyester		●UL/CSA	●UL/CSA/AGA	△
424	Paper	●			
425	Polyolefin				●UL
426	Polyimide	●			
427	Vinyl	●UL/CSA			△
428	Polyester	●UL/CSA/AGA			
430	Polyester		●UL/CSA	●UL/CSA	△
432	Polyester		●UL/CSA	●UL/CSA	
433	Polyester			●UL	
435	Polyester		●UL/CSA	●UL/CSA	
437	Tedlar®	●			
439	Vinyl		●	●	△
457	Polyimide		●UL	●UL	
459	Polyester		●UL/CSA	●UL/CSA	
461	Polyester	●			△
473	Polyester		●UL/CSA	●UL/CSA	△
477	Polyimide		●UL	●UL	△
478	Polyimide			●UL	
479	Polyimide			●UL	
483	Polyester		●UL/CSA	●UL/CSA	△
486	Polyester	●UL/CSA			
488	Polyester	●UL/CSA/AGA			△ UL/CSA
489	Polyester	●UL/CSA			
495	Polyester			●UL	
499	Nylon Cloth	●UL/CSA			△
642	Tedlar®	●			△
7546	Polyester			●UL/CSA	
**7551	Polyester	△			●
7576	Polyester			●UL/CSA	
**7595	Polyethylene/ Polyurethane Foam	●			
**7596	Vinyl	△			●

Tedlar® is a registered trademark of DuPont.

BULK LABELS

Brady now introduces bulk label capability for the TLS2200 and TLS PC Link Thermal Labeling Systems. Bulk labels are designed to save customers money, and provide the perfect low volume* labeling solution. A reusable dispenser box protects labels from dust and debris, and allows easy storage until the next identification job. Bulk labels utilize Brady’s Smart-Cell Technology and allow the TLS2200 and TLS PC Link printers to recognize label sizes and printer settings, automatically eliminating wasted time and materials.








* TLS2200 and TLS PC Link printers are recommended for printing 500 or less labels per print run. You may experience a printer slowdown if printing large quantities of labels at one time depending on the material, label size and amount of print coverage.

●	Recommended ribbon for use with respective material.
△	Acceptable ribbon for use with respective material.
*UL/CSA	Approval Pending.
UL	These materials are UL recognized with its respective ribbon.
CSA	These materials are CSA approved with its respective ribbon.
UL/CSA	These materials are UL & CSA approved with its respective ribbon.
AGA	These materials are AGA approved.
*	R6210 ribbon included with printers.
**	B-7551, B-7595 & B-7596 are available in Europe only.

TLS2200®/TLS PC LINK™ MATERIALS CHART

Type	Max. Service Temp. °F (°C)	Color	Finish	Use	Special Properties
NYLON CLOTH					
B-499	194 (90) 30 days	White	Matte	Low profile through-conduit wire marking, component and general labeling	High adhesion makes all-purpose wire marker ideal for environments where heat, oil and dirt are present; UL recognized/CSA accepted
PAPER					
B-424	158 (70) 30 days	White	Matte	Bar code and general labeling	Good contrast and smear resistance
POLYESTER					
B-422	212 (100) 30 days	White	Gloss	Electronic PCB ID and component; bar code label and rating plates; outlet and patch panel identification	UL recognized/CSA accepted; 2 mil adhesive recommended for application on textured surfaces
B-423	248 (120) 30 days	White	Gloss	Electronic PCB ID and component; bar code label, rating plates and outlets	UL recognized/CSA accepted/AGA accepted
B-428	176 (80) 30 days	Silver	Matte	Rating plates; electronic component marking	UL recognized/CSA accepted/AGA accepted
B-430	212 (100) 30 days	Clear	Gloss	General labeling rating/name plates, outlet and general communications	High adhesion make it ideal for highly textured and other surfaces that are difficult to adhere to; Translucent; UL recognized/CSA accepted
B-432	212 (100) 30 days	Clear	Gloss	General labeling rating/name plates, outlet and general communications	Clear glossy polyester for highly textured and hard to adhere to surfaces. UL recognized/CSA accepted
B-433	392 (200) 5 min.	White	Gloss	Electronic component marking, bar code and general purpose labeling	Good solvent and heat resistance; label can be easily removed; UL recognized
B-435	212 (100) 30 days	Silver	Gloss	Rating plates and general labeling	Designed to withstand solvents while maintaining excellent image quality; UL recognized/CSA accepted/AGA accepted
B-459	212 (100) 30 days	White	Matte	Electronic PCB ID and component; bar code labeling and rating plates	UL recognized/CSA accepted
B-461	212 (100) 30 days	White	Matte	Self-laminating marker	Excellent abrasion and smudge resistance
B-473	356 (180) 5 min.	White	Gloss	Electronic PCB ID and component; bar code labeling and rating plates	Static dissipative adhesive; UL recognized/CSA accepted
B-483	212 (100) 30 days	White	Gloss	General labeling; bar code label and rating plates	Ultra-aggressive adhesive for thermal transfer printing, designed for powder coated surfaces; UL recognized/CSA accepted
B-486	248 (120) 30 days	Silver	Matte	General labeling; bar code labeling and rating plates	Ultra-aggressive adhesive for oily, greasy, and powder coated surfaces; UL recognized/CSA accepted
B-488	248 (120) 30 days	White	Matte	Electronic PCB and component; bar code label and rating plates	High performance matte white
B-489	212 (100) 30 days	White	Matte	General labeling; bar code labeling and rating plates	Ultra-aggressive adhesive for oily, greasy, and powder coated surfaces; UL/CSA approval pending
B-7546	212 (100) 30 days	White	Gloss	Bar code label and rating plates	Tamper-evident; leaves "void" footprint when removed
**B-7551	176 (80) 30 days	Clear	Matte	Terminal block marking, rating plates	Translucent
B-7576	275 (135) 30 days	Silver	Matte	Serial and rating plates	Tamper-evident; leaves "void" footprint when removed
**B-7651	176 (80) 30 days	Clear	Matte	Terminal block marking rating plates	Translucent
POLYETHYLENE					
B-109	120 (49) 30 days	White	Matte	Multi-purpose identification tag, where durability is required	Cross-laminated polyethylene provides extreme tear resistance and excellent cold-weather performance
**B-7595	120 (49) 30 days	White	Matte	Push button and signal light identification; replacement for engraved plates	Polyethylene top layer, laminated onto foam tape; thick material 700 micron; ultra-aggressive adhesive
POLYIMIDE					
B-426	572 (300) 5 min.	Amber	Matte	Underside PCB ID and other high temperature, high performance applications	Withstands extremely high temperatures
B-457	500 (260) 5 min.	White	Gloss	Top- or bottom-side board application for SMT or Through hole	Good contrast and smear resistance; UL recognized
B-477	500 (260) 5 min.	White	Gloss	Top- or bottom-side board application for SMT or Through hole	Static dissipative adhesive; UL recognized
B-478	500 (260) 5 min.	White	Gloss	1 mil low profile top- or bottom-side board application for SMT or Through hole	Static dissipative adhesive; UL recognized
B-479	500 (260) 5 min.	White	Matte	1 mil low profile top- or bottom-side board application for SMT or Through hole	Static dissipative adhesive; UL recognized
POLYOLEFIN					
B-321	221 (105) 30 days	White	Matte	Wire marking	Heat-shrinkable
B-342	267 (130) 30 days	White/ Yellow	Matte	Wire marking	3-to-1 shrink ratio; self-extinguishing, meets the material and physical property of MIL-DTL-23053/5 Class 1, MIL-M-81531, MIL-STD-202F; Method 215 and UL 224
B-425	194 (90) 30 days	White	Matte	Wire marking, fiber optic marking, and general labeling	Excellent solvent resistance and print permanence. UL recognized/CSA approved
POLYPROPYLENE					
B-412	212 (100) 30 days	White	Matte	Wire, cable and product inventory information	Designed for outdoor and harsh environmental applications or where tensile strength is needed
TEDLAR®					
B-437	275 (135) 30 days	White/ Yellow	Matte	Aerospace and military cable marking	Self-extinguishing
B-642	266 (130) 30 days	White	Matte	Self-laminating; wire and cable marking	Self-extinguishing, low smoke and flame spread; Excellent abrasion and smudge resistance

** B-7551, B-7595 & B-7596 are available in Europe only.

	These materials have static dissipative adhesives.
	These materials are UL recognized.
	These materials are CSA approved.
	These materials are AGA approved.
	Halogen-Free (DIN VDE 0472/parts 815)

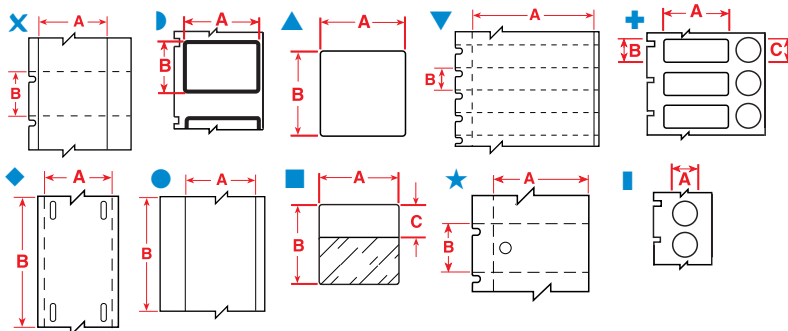
INDEX BY PART NUMBER

CONTINUED

Part Number	Size Inch (mm)	Specifications on Page	Part Number	Size Inch (mm)	Specifications on Page	Part Number	Size Inch (mm)	Specifications on Page
PTL-38-422	400 x 190 (10160 x 4826)	21	**PTL-48-412	157 x .35 (4000 x 900)	19	PTL-86-461	0.60 x 2.625 (15.24 x 66.68)	15
PTL-38-423	400 x 190 (10160 x 4826)	21	PTL-55-412	0.23 (5.84) x continuous	13	PTL-97-488	0.90 x 0.90 (22.86 x 22.86)	16
PTL-38-424	400 x 190 (10160 x 4826)	21	PTL-56-412	0.375 (9.53) x continuous	14	PTL-98-499	1.00 x 0.375 (25.40 x 9.53)	17
PTL-38-428	400 x 190 (10160 x 4826)	21	PTL-57-412	0.50 (12.70) x continuous	15	PTL-99-430	0.74 x 0.32 (18.80 x 8.13)	16
PTL-38-435	400 x 190 (10160 x 4826)	21	PTL-58-412	0.535 (13.59) x continuous	15	PTLCM-41-437W	1.50 (38.10) x continuous	19
PTL-38-459	400 x 190 (10160 x 4826)	21	PTL-59-412	0.785 (19.9) x continuous	16	PTLCM-41-437Y	1.50 (38.10) x continuous	19
PTL-38-483	400 x 190 (10160 x 4826)	21	**PTL-60-109	0.47 x 1.97 (12.00 x 50.00)	14	**PTLEP-01-7595	1.06 x 0.31 (27.00 x 8.00)	18
PTL-38-486	400 x 190 (10160 x 4826)	21	PTL-61-483	0.50 x 2.00 (12.70 x 50.80)	15	**PTLEP-02-7595	1.06 x 0.49 (27.00 x 12.50)	18
PTL-38-489	400 x 190 (10160 x 4826)	21	PTL-62-483	0.75 x 4.00 (19.05 x 101.60)	16	**PTLEP-03-7595	1.06 x 0.59 (27.00 x 15.00)	18
PTL-39-422	0.375 x 0.60 (9.53 x 15.24)	14	PTL-63-483	0.75 x 8.00 (19.05 x 203.20)	16	**PTLEP-04-7595	1.06 x 0.71 (27.00 x 18.00)	18
PTL-39-430	0.375 x 0.60 (9.53 x 15.24)	14	PTL-64-427	1.00 x 3.375 (25.40 x 85.73)	17	PTLFP-01-425	1.18 x 0.39 (30.00 x 10.00)	18
PTL-40-412	1.938 x 0.375 (49.23 x 9.53)	20	PTL-65-483	1.375 x 1.00 (34.93 x 25.40)	18	PTLFT-01-425	1.18 x 0.39 (30.00 x 10.00)	18
PTL-42-422	1.00 (25.40) x continuous	17	PTL-66-427	1.94 x 3.15 (49.23 x 80.00)	20	PTLSL-17-473	1.00 x 0.50 (25.40 x 12.70)	16
PTL-42-430	1.00 (25.40) x continuous	17	**PTL-67-499-YL	0.590 x .354 (15.00 x 9.00)	15	**PTLTB-8-422	0.318 (8.00) x continuous	14
PTL-42-432	1.00 (25.40) x continuous	18	PTL-68-430	0.24 x 0.15 (6.10 x 3.81)	14	**PTLTB-8-7551	0.318 (8.00) x continuous	14
PTL-42-439	1.00 (25.40) x continuous	18	PTL-69-430	0.53 x 0.15 (13.46 x 3.81)	14	PTLTB-400-240	0.240 (6.09) x continuous	13
PTL-42-439-BK	1.00 (25.40) x continuous	18	PTL-70-430	0.24 x 0.20 (6.10 x 5.08)	13	PTLTB-400-318	0.318 (8.00) x continuous	13
PTL-42-439-BL	1.00 (25.40) x continuous	18	PTL-71-430	0.35 x 0.20 (8.89 x 5.08)	14	PTLTB-400-375	0.375 (9.53) x continuous	14
PTL-42-439-GN	1.00 (25.40) x continuous	18	PTL-72-461	1.80 x 0.50 (45.72 x 12.70)	19	PTPSL-17-422	1.00 x 0.50 (25.40 x 12.70)	28
PTL-42-439-OR	1.00 (25.40) x continuous	18	PTL-73-461	1.80 x 0.375 (45.72 x 9.53)	19	PTPSL-17-424	1.00 x 0.50 (25.40 x 12.70)	28
PTL-42-439-RD	1.00 (25.40) x continuous	18	PTL-74-427	2.20 x 0.50 (55.88 x 12.70)	20	PTPSL-17-428	1.00 x 0.50 (25.40 x 12.70)	28
PTL-42-439-YL	1.00 (25.40) x continuous	18	PTL-74-461	2.20 x 0.50 (55.88 x 12.70)	20	PTPSL-20-422	2.00 x 1.00 (50.80 x 25.40)	28
PTL-42-483	1.00 (25.40) x continuous	18	PTL-75-427	2.625 x 1.00 (66.68 x 25.40)	20	PTPSL-20-424	2.00 x 1.00 (50.80 x 25.40)	28
PTL-43-422	1.90 (48.26) x continuous	19	PTL-75-461	2.625 x 1.00 (66.68 x 25.40)	20	PTPSL-20-428	2.00 x 1.00 (50.80 x 25.40)	28
PTL-43-430	1.90 (48.26) x continuous	19	PTL-75-461-YL	2.625 x 1.00 (66.68 x 25.40)	20	PTPSL-26-422	2.75 X 1.25 (69.85 x 31.75)	28
PTL-43-439	1.90 (48.26) x continuous	19	PTL-76-461	1.625 x 0.60 (41.28 x 15.24)	19	PTPSL-26-428	2.75 X 1.25 (69.85 x 31.75)	28
PTL-43-439-BK	1.90 (48.26) x continuous	19	PTL-77-461	3.50 x 1.50 (88.90 x 38.10)	21	PTPSL-50-422	3.00 x 1.65 (76.20 x 41.91)	28
PTL-43-439-BL	1.90 (48.26) x continuous	19	PTL-78-427AW	1.90 x 1.00 (48.26 x 25.40)	19	PTPSL-50-428	3.00 x 1.65 (76.20 x 41.91)	28
PTL-43-439-GN	1.90 (48.26) x continuous	19	PTL-78-499	1.90 x 1.00 (48.26 x 25.40)	19	PTS45-350-321	0.45 x 0.35 (11.43 x 8.89)	25
PTL-43-439-OR	1.90 (48.26) x continuous	19	PTL-79-461	3.75 x 0.75 (95.25 x 19.05)	21	PTS45-500-321	0.45 x 0.50 (11.43 x 12.7)	25
PTL-43-439-RD	1.90 (48.26) x continuous	19	PTL-80-424	0.75 x 0.90 (19.05 x 22.86)	17	PTS95-1000-321	0.95 x 1.00 (24.13 x 25.4)	25
PTL-43-439-YL	1.90 (48.26) x continuous	19	PTL-80-488	0.75 x 0.90 (19.05 x 22.86)	16	PTS95-350-321	0.95 x 0.35 (24.13 x 8.89)	25
PTL-43-483	1.90 (48.26) x continuous	19	PTL-81-488	1.90 x 0.25 (48.26 x 6.35)	19	PTS95-500-321	0.95 x 0.50 (24.13 x 12.70)	25
PTL-44-422	0.50 x 0.375 (12.70 x 9.52)	15	PTL-81-499	1.90 x 0.25 (48.26 x 6.35)	19	PTS95-750-321	0.95 x 0.75 (24.13 x 19.05)	25
PTL-44-430	0.50 x 0.375 (12.70 x 9.52)	15	PTL-82-499	0.375 (9.53) diameter	14	PTS190-1000-321	1.90 x 1.00 (48.26 x 25.40)	25
PTL-45-422	1.50 x 0.375 (38.10 x 9.525)	18	PTL-82-499YL	0.375 (9.53) diameter	14	PTS190-350-321	1.90 x 0.35 (48.26 x 8.89)	25
PTL-45-430	1.50 x 0.375 (38.10 x 9.525)	18	PTL-83-499	0.50 (12.70) diameter	14	PTS190-500-321	1.90 x 0.50 (48.26 x 12.70)	25
PTL-46-422	0.375 (9.53) x continuous	14	PTL-83-499YL	0.50 (12.70) diameter	14	PTS190-750-321	1.90 x 0.75 (48.26 x 19.05)	25
PTL-46-430	0.375 (9.53) x continuous	14	PTL-84-499	0.90 x 0.50 (22.86 x 12.70)	16			
**PTL-47-499-YL	0.79 x .32 (20.00 x 8.00)	16	PTL-85-430	0.74 x 0.24 (18.80 x 6.10)	16			

** Available in Europe only.

LABEL INDEX BY SIZE



In. (mm)	Diagram	Part Number	Pieces Per Package	Material	Color	Label Width A Inch (mm)	Label Height B Inch (mm)	Write-On Height C Inch (mm)	Maximum Characters Per Line For Font: 10	Maximum Characters Per Line For Font: 7	Maximum Lines Of Text For Font: 2	Maximum Lines Of Text For Font: 10
.23" (5.84 mm) Label Width												
●		PTL-55-412	50ft (15m)	Polypropylene	White	0.23 (5.84)	continuous		4	2	1	N/A
.24" (6.09 mm) Label Width												
●		PTL-68-430	750	Polyester	Clear	0.24 (6.09)	0.15 (3.81)		4	2	1	2 1 0
●		PTL-70-430	750	Polyester	Clear	0.24 (6.09)	0.15 (3.81)		4	2	1	2 1 0
●		PTLTB-400-240	30ft (9m)	Vinyl Cloth	White	0.24 (6.09)	continuous		4	2	1	N/A
●		BPTLTB-400-240	300ft (91m)	Vinyl Cloth	White	0.24 (6.09)	continuous		4	2	1	N/A

Any label two inches or larger is rotated on liner.

Note: Labels in chart are sorted in order by width, height, 3 digit material number (within part number), then die number (within part number).

* Also available in: YL=Yellow

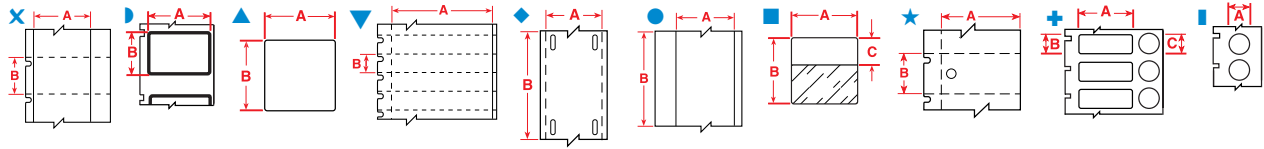
** Also available in: OR=orange, GN=green, GY=grey, PL=purple, BL=blue, BR=brown, YL=yellow, RD=red.

To order a color, add a dash "-" after the material number, then add the color suffix.

Standard product: Contact your Brady Identification Solutions distributor or Customer Service representative for ordering information.

LABEL INDEX BY SIZE

CONTINUED



In. (mm)	Diagram	Part Number	Pieces Per Package	Material	Color	Label Width A Inch (mm)	Label Height B Inch (mm)	Write-On Height C Inch (mm)	Maximum Characters Per Line For Font:			Maximum Lines Of Text For Font:		
									2	7	10	2	7	10
.25" (6.35 mm) Label Width														
	▲	PTL-1-423	750	Polyester	White	0.25 (6.35)	0.25 (6.35)		5	2	0	2	1	0
	▲	PTL-1-426	750	Polyimide	Amber	0.25 (6.35)	0.25 (6.35)		5	2	0	2	1	0
	▲	PTL-1-457	750	Polyimide	White	0.25 (6.35)	0.25 (6.35)		5	2	0	2	1	0
	▲	PTL-1-473	750	Polyester	White	0.25 (6.35)	0.25 (6.35)		5	2	0	2	1	0
	▲	PTL-1-477	750	Polyimide	White	0.25 (6.35)	0.25 (6.35)		5	2	0	2	1	0
	▲	PTL-1-478	750	Polyimide	White	0.25 (6.35)	0.25 (6.35)		5	2	0	2	1	0
	▲	PTL-1-479	750	Polyimide	White	0.25 (6.35)	0.25 (6.35)		5	2	0	2	1	0
	▲	PTL-10-400	750	Vinyl Cloth	White	0.25 (6.35)	0.75 (19.05)		5	2	1	8	4	2
	■	PTL-10-427 *	750	Self-laminating Vinyl	Translucent	0.25 (6.35)	0.75 (19.05)	0.375 (9.53)	5	2	1	3	1	1
	▲	PTL-28-400	750	Vinyl Cloth	White	0.25 (6.35)	1.50 (38.10)		5	2	1	16	8	5
	■	PTL-28-427 **	750	Self-laminating Vinyl	Translucent	0.25 (6.35)	1.50 (38.10)	0.50 (12.70)	5	2	1	5	2	1
	▲	PTL-28-499	750	Nylon Cloth	White	0.25 (6.35)	1.50 (38.10)		5	2	1	16	8	5
.318" (8.00 mm) Label Width														
	●	PTLTB-400-318	30ft (9m)	Vinyl Cloth	White	0.318 (8.00)	continuous		7	3	2	—	N/A	—
	●	BPTLTB-400-318	300ft (91m)	Vinyl Cloth	White	0.318 (8.00)	continuous		7	3	2	—	N/A	—
	●	** PTLTB-8-422	50ft (15m)	Polyester	White	0.318 (8.00)	continuous		7	3	2	2	1	0
	●	** PTLTB-8-7551	50ft (15m)	Polyester	Clear	0.318 (8.00)	continuous		7	3	2	2	1	0
.35" (8.89 mm) Label Width														
	●	PTL-69-430	750	Polyester	Clear	0.35 (8.89)	0.15 (3.81)		7	3	2	2	1	0
	●	PTL-71-430	750	Polyester	Clear	0.35 (8.89)	0.20 (5.08)		7	3	2	2	1	0
.375" (9.53 mm) Label Width														
	■	PTL-82-499	500	Nylon Cloth	White	0.375 (9.53)	diameter		8	3	2	3	1	1
	■	PTL-82-499YL	500	Nylon Cloth	White	0.375 (9.53)	diameter		8	3	2	3	1	1
	▲	PTL-3-423	500	Polyester	White	0.375 (9.53)	0.375 (9.53)		8	3	2	3	1	1
	▲	PTL-3-426	500	Polyimide	Amber	0.375 (9.53)	0.375 (9.53)		8	3	2	3	1	1
	▲	PTL-3-457	500	Polyimide	White	0.375 (9.53)	0.375 (9.53)		8	3	2	3	1	1
	▲	PTL-3-477	500	Polyimide	White	0.375 (9.53)	0.375 (9.53)		8	3	2	3	1	1
	▲	PTL-3-478	500	Polyimide	White	0.375 (9.53)	0.375 (9.53)		8	3	2	4	2	1
	▲	PTL-3-479	500	Polyimide	White	0.375 (9.53)	0.375 (9.53)		8	3	2	4	2	1
	X	PTL-39-422	750	Polyester	White	0.375 (9.53)	0.60 (15.24)		8	3	2	6	3	2
	X	PTL-39-430	750	Polyester	Clear	0.375 (9.53)	0.60 (15.24)		8	3	2	6	3	2
	▲	PTL-16-400	500	Vinyl Cloth	White	0.375 (9.53)	1.00 (25.40)		8	3	2	10	5	3
	▲	PTL-16-499	500	Nylon Cloth	White	0.375 (9.53)	1.00 (25.40)		8	3	2	10	5	3
	●	PTL-46-422	50ft (15m)	Polyester	White	0.375 (9.53)	continuous		50	50	50	3	1	1
	●	PTL-46-430	50ft (15m)	Polyester	Clear	0.375 (9.53)	continuous		50	50	50	3	1	1
	●	PTL-56-412	50ft (15m)	Polypropylene	White	0.375 (9.53)	continuous		50	50	50	3	1	1
	●	PTLTB-400-375	30ft (9m)	Vinyl Cloth	White	0.375 (9.53)	continuous		8	3	2	—	N/A	—
	●	BPTLTB-400-375	300ft (91m)	Vinyl Cloth	White	0.375 (9.53)	continuous		8	3	2	—	N/A	—
.40" (10.16 mm) Label Width														
	▲	PTL-4-423	500	Polyester	White	0.40 (10.16)	0.40 (10.16)		9	3	2	4	2	1
	▲	PTL-4-426	500	Polyimide	Amber	0.40 (10.16)	0.40 (10.16)		9	3	2	4	2	1
	▲	PTL-4-457	500	Polyimide	White	0.40 (10.16)	0.40 (10.16)		9	3	2	4	2	1
	▲	PTL-4-478	500	Polyimide	White	0.40 (10.16)	0.40 (10.16)		9	3	2	4	3	1
	▲	PTL-4-479	500	Polyimide	White	0.40 (10.16)	0.40 (10.16)		9	3	2	4	3	1
.47" (12.00 mm) Label Width														
	◆	**PTL-60-109	100	Polyethylene	White	0.47 (12.00)	1.97 (50.00)		41	17	11	5	2	1
.50" (12.70 mm) Label Width														
	■	PTL-83-499	500	Nylon Cloth	White	0.50 (12.70)	diameter		11	0	0	1	0	0
	■	PTL-83-499YL	500	Nylon Cloth	White	0.50 (12.70)	diameter		11	0	0	1	0	0
	▲	PTL-5-422	750	Polyester	White	0.50 (12.70)	0.20 (5.08)		11	0	0	1	0	0
	▲	PTL-5-423	750	Polyester	White	0.50 (12.70)	0.20 (5.08)		11	0	0	1	0	0
	▲	PTL-5-473	750	Polyester	White	0.50 (12.70)	0.20 (5.08)		11	0	0	1	0	0
	▲	PTL-6-423	750	Polyester	White	0.50 (12.70)	0.275 (6.98)		11	5	0	2	1	0

Any label two inches or larger is rotated on liner.

** Available in Europe only.

Note: Labels in chart are sorted in order by width, height, 3 digit material number (within part number), then die number (within part number).

* Also available in: YL=Yellow

** Also available in: OR=orange, GN=green, GY=grey, PL=purple, BL=blue, BR=brown, YL=yellow, RD=red.

To order a color, add a dash "-" after the material number, then add the color suffix.

Standard product: Contact your Brady Identification Solutions distributor or Customer Service representative for ordering information.

LABEL INDEX BY SIZE

CONTINUED

In. (mm) Diagram	Part Number	Pieces Per Package	Material	Color	Label Width A Inch (mm)	Label Height B Inch (mm)	Write-On Height C Inch (mm)	Maximum Characters Per Line For Font:			Maximum Lines Of Text For Font:		
								2	7	10	2	7	10
.50" (12.70 mm) Label Width (continued)													
▲	PTL-6-426	750	Polyimide	Amber	0.50 (12.70)	0.275 (6.98)		11	5	0	2	1	0
▲	PTL-6-430	750	Polyester	Clear	0.50 (12.70)	0.275 (6.98)		11	5	0	2	1	0
▲	PTL-6-457	750	Polyimide	White	0.50 (12.70)	0.275 (6.98)		11	5	0	2	1	0
▲	PTL-6-473	750	Polyester	White	0.50 (12.70)	0.275 (6.98)		11	5	0	2	1	0
▲	PTL-6-478	750	Polyimide	White	0.50 (12.70)	0.275 (6.98)		11	5	3	2	1	0
▲	PTL-6-479	750	Polyimide	White	0.50 (12.70)	0.275 (6.98)		11	5	3	2	1	0
▲	PTL-44-422	500	Polyester	White	0.50 (12.70)	0.375 (9.52)		11	5	3	3	1	1
▲	PTL-44-430	500	Polyester	Clear	0.50 (12.70)	0.375 (9.52)		11	5	3	3	1	1
▲	PTL-7-400	500	Vinyl Cloth	White	0.50 (12.70)	0.50 (12.70)		11	5	3	5	2	1
▲	PTL-7-422	500	Polyester	White	0.50 (12.70)	0.50 (12.70)		11	5	3	5	2	1
▲	PTL-7-423	500	Polyester	White	0.50 (12.70)	0.50 (12.70)		11	5	3	5	2	1
▲	PTL-7-430	500	Polyester	Clear	0.50 (12.70)	0.50 (12.70)		11	5	3	5	2	1
▲	PTL-7-499	500	Nylon Cloth	White	0.50 (12.70)	0.50 (12.70)		11	5	3	5	2	1
▲	PTL-11-400	500	Vinyl Cloth	White	0.50 (12.70)	0.75 (19.05)		11	5	3	8	4	2
▲	BP TL-11-400	5000	Vinyl Cloth	White	0.50 (12.70)	0.75 (19.05)		11	5	3	8	4	2
■	PTL-11-427*	500	Self-laminating Vinyl	Translucent	0.50 (12.70)	0.75 (19.05)	0.375 (9.53)	11	5	3	3	1	1
■	BP TL-11-427	5000	Self-laminating Vinyl	Translucent	0.50 (12.70)	0.75 (19.05)	0.375 (9.53)	11	5	3	3	1	1
▲	PTL-11-499	500	Nylon Cloth	White	0.50 (12.70)	0.75 (19.05)		11	5	3	8	4	2
▲	BP TL-11-499	5000	Nylon Cloth	White	0.50 (12.70)	0.75 (19.05)		11	5	3	8	4	2
■	PTL-17-427*	500	Self-laminating Vinyl	Translucent	0.50 (12.70)	1.00 (25.40)	0.375 (9.53)	11	5	3	3	1	1
■	BP TL-17-427	5000	Self-laminating Vinyl	Translucent	0.50 (12.70)	1.00 (25.40)	0.375 (9.53)	11	5	3	3	1	1
▲	PTL-29-400	500	Vinyl Cloth	White	0.50 (12.70)	1.50 (38.10)		11	5	3	16	8	5
▲	BP TL-29-400	5000	Vinyl Cloth	White	0.50 (12.70)	1.50 (38.10)		11	5	3	16	8	5
■	PTL-29-427**	500	Self-laminating Vinyl	Translucent	0.50 (12.70)	1.50 (38.10)	0.50 (12.70)	11	5	3	5	2	1
■	BP TL-29-427	5000	Self-laminating Vinyl	Translucent	0.50 (12.70)	1.50 (38.10)	0.50 (12.70)	11	5	3	5	2	1
▲	PTL-29-499	500	Nylon Cloth	White	0.50 (12.70)	1.50 (38.10)		11	5	3	16	8	5
▲	PTL-61-483	100	Polyester	White	0.50 (12.70)	2.00 (50.80)		50	21	15	5	2	1
●	PTL-8-400-30	30ft (9m)	Vinyl Cloth	White	0.50 (12.70)	continuous		50	50	50	5	2	1
●	PTL-8-422	50ft (15m)	Polyester	White	0.50 (12.70)	continuous		50	50	50	5	2	1
●	PTL-8-423	50ft (15m)	Polyester	White	0.50 (12.70)	continuous		50	50	50	5	2	1
●	PTL-8-428	50ft (15m)	Metallized Polyester	Silver	0.50 (12.70)	continuous		50	50	50	5	2	1
●	PTL-8-430	50ft (15m)	Polyester	Clear	0.50 (12.70)	continuous		50	50	50	5	2	1
●	PTL-8-439	50ft (15m)	Vinyl	White	0.50 (12.70)	continuous		50	50	50	5	2	1
●	PTL-8-439BK	50ft (15m)	Vinyl	Black	0.50 (12.70)	continuous		50	50	50	5	2	1
●	PTL-8-439BL	50ft (15m)	Vinyl	Blue	0.50 (12.70)	continuous		50	50	50	5	2	1
●	PTL-8-439GN	50ft (15m)	Vinyl	Green	0.50 (12.70)	continuous		50	50	50	5	2	1
●	PTL-8-439OR	50ft (15m)	Vinyl	Orange	0.50 (12.70)	continuous		50	50	50	5	2	1
●	PTL-8-439RD	50ft (15m)	Vinyl	Red	0.50 (12.70)	continuous		50	50	50	5	2	1
●	PTL-8-439YL	50ft (15m)	Vinyl	Yellow	0.50 (12.70)	continuous		50	50	50	5	2	1
●	PTL-57-412	50ft (15m)	Polypropylene	White	0.50 (12.70)	continuous		50	50	50	5	2	1
.535" (13.59 mm) Label Width													
●	PTL-58-412	50ft (15m)	Polypropylene	White	0.535 (13.59)	continuous		50	50	50	5	2	1
.59" (15.00 mm) Label Width													
▲	**PTDSU-15-7596	2500	Vinyl	White	0.59 (15.00)	0.17 (4.20)		14	0	0	1	0	0
▲	**PTDSU-15-7596-YL	2500	Vinyl	Yellow	0.59 (15.00)	0.17 (4.20)		14	0	0	1	0	0
▲	**PTL-67-499-YL	750	Nylon Cloth	Yellow	0.59 (15.00)	0.35 (9.00)		14	5	3	3	1	1
.60" (15.24 mm) Label Width													
▲	PTL-86-461	100	Polyester	White	0.60 (15.24)	2.625 (66.68)	1.00 (25.4)	15	0	0	1	0	0
.65" (16.51 mm) Label Width													
▲	PTL-9-423	750	Polyester	White	0.65 (16.51)	0.20 (5.08)		15	0	0	1	0	0
▲	PTL-9-426	750	Polyimide	Amber	0.65 (16.51)	0.20 (5.08)		15	0	0	1	0	0
▲	PTL-9-437	750	Tedlar®	White	0.65 (16.51)	0.20 (5.08)		15	0	0	1	0	0
▲	PTL-9-457	750	Polyimide	White	0.65 (16.51)	0.20 (5.08)		15	0	0	1	0	0
▲	PTL-9-473	750	Polyester	White	0.65 (16.51)	0.20 (5.08)		15	0	0	1	0	0
▲	PTL-9-477	750	Polyimide	White	0.65 (16.51)	0.20 (5.08)		15	0	0	1	0	0
▲	PTL-9-478	750	Polyimide	White	0.65 (16.51)	0.20 (5.08)		15	0	0	1	0	0
▲	PTL-9-479	750	Polyimide	White	0.65 (16.51)	0.20 (5.08)		15	0	0	1	0	0

Tedlar® is a registered trademark of DuPont.

** Available in Europe only.

Any label two inches or larger is rotated on liner.

Note: Labels in chart are sorted in order by width, height, 3 digit material number (within part number), then die number (within part number).

* Also available in: YL=Yellow

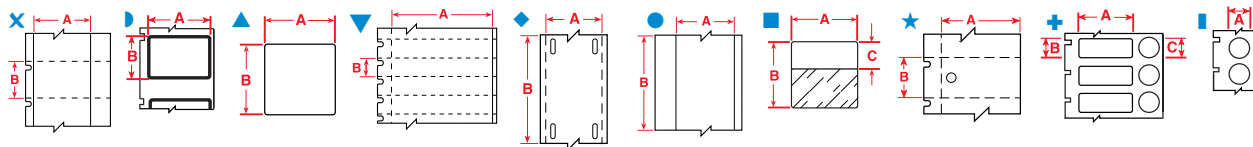
** Also available in: OR=orange, GN=green, GY=grey, PL=purple, BL=blue, BR=brown, YL=yellow, RD=red.

To order a color, add a dash "-" after the material number, then add the color suffix.

Standard product: Contact your Brady Identification Solutions distributor or Customer Service representative for ordering information.

LABEL INDEX BY SIZE

CONTINUED



In. (mm)	Diagram	Part Number	Pieces Per Package	Material	Color	Label Width	Label Height	Write-On Height C Inch (mm)	Maximum Characters Per Line For Font:			Maximum Lines Of Text For Font:		
						A Inch (mm)	B Inch (mm)		2	7	10	2	7	10
.74" (18.80 mm) Label Width														
●		PTL-85-430	750	Polyester	Clear	0.74 (18.80)	0.24 (6.100)		4	2	1	—	N/A	—
●		PTL-99-430	750	Polyester	Clear	0.74 (18.80)	0.32 (8.13)		4	2	1	—	N/A	—
.75" (19.05 mm) Label Width														
▲		PTL-10-423	750	Polyester	White	0.75 (19.05)	0.25 (6.35)		18	7	0	2	1	0
▲		PTL-10-426	750	Polyimide	Amber	0.75 (19.05)	0.25 (6.35)		18	7	0	2	1	0
▲		PTL-10-437	750	Tedlar	White	0.75 (19.05)	0.25 (6.35)		18	7	0	2	1	0
▲		PTL-10-457	750	Polyimide	White	0.75 (19.05)	0.25 (6.35)		18	7	0	2	1	0
▲		PTL-10-473	750	Polyester	White	0.75 (19.05)	0.25 (6.35)		18	7	0	2	1	0
▲		PTL-10-477	750	Polyimide	White	0.75 (19.05)	0.25 (6.35)		18	7	0	2	1	0
▲		PTL-10-478	750	Polyimide	White	0.75 (19.05)	0.25 (6.35)		18	7	0	2	1	0
▲		PTL-10-479	750	Polyimide	White	0.75 (19.05)	0.25 (6.35)		18	7	0	2	1	0
▲		PTL-80-488	250	Polyester	White	0.75 (19.05)	0.90 (22.86)		18	7	5	10	5	3
▲		PTL-18-400	250	Vinyl Cloth	White	0.75 (19.05)	1.00 (25.40)		18	7	5	10	5	3
▲		BPTL-18-400	2500	Vinyl Cloth	White	0.75 (19.05)	1.00 (25.40)		18	7	5	10	5	3
■		PTL-18-427 *	250	Self-laminating Vinyl	Translucent	0.75 (19.05)	1.00 (25.40)	0.375 (9.53)	18	7	5	3	1	1
■		BPTL-18-427	2500	Self-laminating Vinyl	Translucent	0.75 (19.05)	1.00 (25.40)	0.375 (9.53)	18	7	5	3	1	1
▲		PTL-18-499	250	Nylon Cloth	White	0.75 (19.05)	1.00 (25.40)		18	7	5	10	5	3
▲		PTL-30-400	250	Vinyl Cloth	White	0.75 (19.05)	1.50 (38.10)		18	7	5	16	8	5
■		PTL-30-427 **	250	Self-laminating Vinyl	Translucent	0.75 (19.05)	1.50 (38.10)	0.50 (12.70)	18	7	5	5	2	1
■		BPTL-30-427	2500	Self-laminating Vinyl	Translucent	0.75 (19.05)	1.50 (38.10)	0.50 (12.70)	18	7	5	5	2	1
▲		PTL-30-499	250	Nylon Cloth	White	0.75 (19.05)	1.50 (38.10)		18	7	5	16	8	5
◆		BPTL-12-109	1000	Polyethylene	White	0.75 (19.05)	3.00 (76.20)		45	19	12	6	3	2
◆		PTL-12-109	100	Polyethylene	White	0.75 (19.05)	3.00 (76.20)		45	19	12	6	3	2
▲		PTL-62-483	50	Polyester	White	0.75 (19.05)	4.00 (101.60)		50	42	27	8	4	2
▲		PTL-63-483***	50	Polyester	White	0.75 (19.05)	8.00 (203.20)		50	50	50	7	4	2
.764" (19.94 mm) Label Width														
●		PTL-59-412	50ft (15m)	Polypropylene	White	0.785 (19.94)	continuous		50	50	50	8	4	2
.79" (20.06 mm) Label Width														
▲		** PTL-47-499-YL	750	Nylon Cloth	Yellow	0.79 (20.06)	0.32 (8.00)		18	7	5	2	1	0
.90" (22.86 mm) Label Width														
▲		PTL-13-423	750	Polyester	White	0.90 (22.86)	0.25 (6.35)		22	9	0	2	1	0
▲		PTL-13-426	750	Polyimide	Amber	0.90 (22.86)	0.25 (6.35)		22	9	0	2	1	0
▲		PTL-13-457	750	Polyimide	White	0.90 (22.86)	0.25 (6.35)		22	9	0	2	1	0
▲		PTL-13-478	750	Polyimide	White	0.90 (22.86)	0.25 (6.35)		22	9	0	2	1	0
▲		PTL-13-479	750	Polyimide	White	0.90 (22.86)	0.25 (6.35)		22	9	0	2	1	0
▲		PTL-84-499	500	Nylon Cloth	White	0.90 (22.86)	0.50 (12.70)		22	9	0	2	1	0
▲		PTL-97-488	250	Polyester	White	0.90 (22.86)	0.90 (22.86)		22	9	0	2	1	0
1.00" (25.40 mm) Label Width														
▲		PTL-14-423	750	Polyester	White	1.00 (25.40)	0.187 (4.74)		24	0	0	1	0	0
▲		PTL-14-457	750	Polyimide	White	1.00 (25.40)	0.187 (4.74)		24	0	0	1	0	0
▲		PTL-14-477	750	Polyimide	White	1.00 (25.40)	0.187 (4.74)		24	0	0	1	0	0
▲		PTL-14-478	750	Polyimide	White	1.00 (25.40)	0.187 (4.74)		24	0	0	1	0	0
▲		PTL-14-479	750	Polyimide	White	1.00 (25.40)	0.187 (4.74)		24	0	0	1	0	0
▲		PTL-15-400	750	Vinyl Cloth	White	1.00 (25.40)	0.275 (6.98)		24	10	0	2	1	0
▲		PTL-15-423	750	Polyester	White	1.00 (25.40)	0.275 (6.98)		24	10	0	2	1	0
▲		PTL-15-428	750	Metallized Polyester	Silver	1.00 (25.40)	0.275 (6.98)		24	10	0	2	1	0
▲		PTL-15-437	750	Tedlar	White	1.00 (25.40)	0.275 (6.98)		24	10	0	2	1	0
▲		PTL-16-422	500	Polyester	White	1.00 (25.40)	0.375 (9.53)		24	10	7	3	1	1
▲		PTL-16-423	500	Polyester	White	1.00 (25.40)	0.375 (9.53)		24	10	7	3	1	1
▲		BPTL-16-423	5000	Polyester	White	1.00 (25.40)	0.375 (9.53)		24	10	7	3	1	1
▲		PTL-16-426	500	Polyimide	Amber	1.00 (25.40)	0.375 (9.53)		24	10	7	3	1	1
▲		PTL-16-430	500	Polyester	Clear	1.00 (25.40)	0.375 (9.53)		24	10	7	3	1	1
▲		PTL-16-435	500	Polyester	Metallized	1.00 (25.40)	0.375 (9.53)		24	10	7	3	1	1

Tedlar® is a registered trademark of DuPont.

Any label two inches or larger is rotated on liner.

Note: Labels in chart are sorted in order by width, height, 3 digit material number (within part number), then die number (within part number).

* Also available in: YL=Yellow

** Also available in: OR=orange, GN=green, GY=grey, PL=purple, BL=blue, BR=brown, YL=yellow, RD=red.

To order a color, add a dash "-" after the material number, then add the color suffix.

Standard product: Contact your Brady Identification Solutions distributor or Customer Service representative for ordering information.

*** PTL-63-483 only for use in TLS2200.

** Available in Europe only.

LABEL INDEX BY SIZE

CONTINUED

In. (mm)	Diagram	Part Number	Pieces Per Package	Material	Color	Label Width A Inch (mm)	Label Height B Inch (mm)	Write-On Height C Inch (mm)	Maximum Characters Per Line For Font:			Maximum Lines Of Text For Font:		
									2	7	10	2	7	10
1.00" (25.40 mm) Label Width (continued)														
▲		PTL-16-457	500	Polyimide	White	1.00 (25.40)	0.375 (9.53)		24	10	7	3	1	1
▲		PTL-16-473	500	Polyester	White	1.00 (25.40)	0.375 (9.53)		24	10	7	3	1	1
▲		PTL-16-478	500	Polyimide	White	1.00 (25.40)	0.375 (9.53)		24	10	7	4	2	1
▲		PTL-16-479	500	Polyimide	White	1.00 (25.40)	0.375 (9.53)		24	10	7	4	2	1
▲		PTL-16-483	500	Polyester	White	1.00 (25.40)	0.375 (9.53)		24	10	7	3	1	1
▲		PTL-16-486	500	Polyester	Silver	1.00 (25.40)	0.375 (9.53)		24	10	7	3	1	1
+		PTL-98-499	500	Nylon Cloth	White	1.00 (25.40)	0.375 (9.53) with 0.375 (9.53) diameter		24	10	7	3	1	1
▲		PTL-17-351	500	Vinyl	White	1.00 (25.40)	0.50 (12.70)		24	10	7	5	2	1
▲		PTL-17-352	500	Vinyl	Silver	1.00 (25.40)	0.50 (12.70)		24	10	7	5	2	1
▲		PTL-17-400	500	Vinyl Cloth	White	1.00 (25.40)	0.50 (12.70)		24	10	7	5	2	1
▲		PTL-17-422	500	Polyester	White	1.00 (25.40)	0.50 (12.70)		24	10	7	5	2	1
▲		PTL-17-423	500	Polyester	White	1.00 (25.40)	0.50 (12.70)		24	10	7	5	2	1
▲		BPTEL-17-423	5000	Polyester	White	1.00 (25.40)	0.50 (12.70)		24	10	7	5	2	1
▲		PTL-17-426	500	Polyimide	Amber	1.00 (25.40)	0.50 (12.70)		24	10	7	5	2	1
▲		PTL-17-428	500	Metallized Polyester	Silver	1.00 (25.40)	0.50 (12.70)		24	10	7	5	2	1
▲		BPTEL-17-428	5000	Metallized Polyester	Silver	1.00 (25.40)	0.50 (12.70)		24	10	7	5	2	1
▲		PTL-17-430	500	Polyester	Clear	1.00 (25.40)	0.50 (12.70)		24	10	7	5	2	1
▲		PTL-17-435	500	Polyester	Silver	1.00 (25.40)	0.50 (12.70)		24	10	7	5	2	1
▲		PTL-17-473	500	Polyester	White	1.00 (25.40)	0.50 (12.70)		24	10	7	5	2	1
▲		PTL-17-478	500	Polyimide	White	1.00 (25.40)	0.50 (12.70)		24	10	7	5	3	1
▲		PTL-17-479	500	Polyimide	White	1.00 (25.40)	0.50 (12.70)		24	10	7	5	3	1
▲		PTL-17-483	500	Polyester	White	1.00 (25.40)	0.50 (12.70)		24	10	7	5	2	1
▲		PTL-17-486	500	Polyester	Silver	1.00 (25.40)	0.50 (12.70)		24	10	7	5	2	1
▲		PTL-17-489	500	Polyester	White	1.00 (25.40)	0.50 (12.70)		24	10	7	5	2	1
▲		PTL-17-7546	500	Polyester	White	1.00 (25.40)	0.50 (12.70)		24	10	7	5	2	1
▲		PTL-17-7576	500	Polyester	Silver	1.00 (25.40)	0.50 (12.70)		24	10	7	5	2	1
▲		PTL-19-400	250	Vinyl Cloth	White	1.00 (25.40)	1.00 (25.40)		24	10	7	10	5	3
▲		BPTEL-19-400	2500	Vinyl Cloth	White	1.00 (25.40)	1.00 (25.40)		24	10	7	10	5	3
▲		PTL-19-422	250	Polyester	White	1.00 (25.40)	1.00 (25.40)		24	10	7	10	5	3
▲		PTL-19-423	250	Polyester	White	1.00 (25.40)	1.00 (25.40)		24	10	7	10	5	3
▲		BPTEL-19-423	2500	Polyester	White	1.00 (25.40)	1.00 (25.40)		24	10	7	10	5	3
■		PTL-19-427**	250	Self-laminating Vinyl	Translucent	1.00 (25.40)	1.00 (25.40)	.375 (9.53)	24	10	7	3	1	1
■		BPTEL-19-427	2500	Self-laminating Vinyl	Translucent	1.00 (25.40)	1.00 (25.40)	.375 (9.53)	24	10	7	3	1	1
▲		PTL-19-435	250	Polyester	Metallized	1.00 (25.40)	1.00 (25.40)		24	10	7	10	5	3
▲		PTL-19-483	250	Polyester	White	1.00 (25.40)	1.00 (25.40)		24	10	7	10	5	3
▲		PTL-19-486	250	Polyester	Silver	1.00 (25.40)	1.00 (25.40)		24	10	7	10	5	3
▲		PTL-19-489	250	Polyester	White	1.00 (25.40)	1.00 (25.40)		24	10	7	10	5	3
▲		PTL-19-499	250	Nylon Cloth	White	1.00 (25.40)	1.00 (25.40)		24	10	7	10	5	3
■		PTL-19-642	250	Tedlar®	White	1.00 (25.40)	1.00 (25.40)	.375 (9.53)	24	10	7	3	1	1
▲		PTL-31-400	250	Vinyl Cloth	White	1.00 (25.40)	1.50 (38.10)		24	10	7	16	8	5
■		PTL-31-427	250	Self-laminating Vinyl	Translucent	1.00 (25.40)	1.50 (38.10)	0.50 (12.70)	24	10	7	5	2	1
■		BPTEL-31-427	2500	Self-laminating Vinyl	Translucent	1.00 (25.40)	1.50 (38.10)	0.50 (12.70)	24	10	7	5	2	1
▲		PTL-31-499	250	Nylon Cloth	White	1.00 (25.40)	1.50 (38.10)		24	10	7	16	8	5
■		PTL-31-642	250	Tedlar	White	1.00 (25.40)	1.50 (38.10)	0.50 (12.70)	24	10	7	5	2	1
▲		PTL-21-400	100	Vinyl Cloth	White	1.00 (25.40)	2.50 (63.50)		24	10	7	23	14	9
■		PTL-21-427	100	Self-laminating Vinyl	Translucent	1.00 (25.40)	2.50 (63.50)	0.75 (19.05)	24	10	7	8	4	2
■		BPTEL-21-427	1000	Self-laminating Vinyl	Translucent	1.00 (25.40)	2.50 (63.50)	0.75 (19.05)	24	10	7	8	4	2
▲		PTL-21-499	100	Nylon Cloth	Matte White	1.00 (25.40)	2.50 (63.50)	0.75 (19.05)	24	10	7	8	4	2
■		PTL-21-642	100	Tedlar	White	1.00 (25.40)	2.50 (63.50)	0.75 (19.05)	24	10	7	8	4	2
■		PTL-64-427***	100	Self-laminating Vinyl	Translucent	1.00 (25.40)	3.375 (85.73)	1.125 (28.58) both ends	24	10	7	12	12	8
▲		PTL-23-400	100	Vinyl Cloth	White	1.00 (25.40)	4.00 (101.60)		24	10	7	23	22	15
■		PTL-23-427**	100	Self-laminating Vinyl	Translucent	1.00 (25.40)	4.00 (101.60)	1.00 (25.40)	24	10	7	10	5	3
■		BPTEL-23-427	1000	Self-laminating Vinyl	Translucent	1.00 (25.40)	4.00 (101.60)	1.00 (25.40)	24	10	7	10	5	3
●		PTL-42-422	50ft (15m)	Polyester	White	1.00 (25.40)	continuous		50	50	50	5	4	3
●		PTL-42-430	50ft (15m)	Polyester	Clear	1.00 (25.40)	continuous		50	50	50	5	4	3

Tedlar® is a registered trademark of DuPont.

Any label two inches or larger is rotated on liner.

Note: Labels in chart are sorted in order by width, height, 3 digit material number (within part number), then die number (within part number).

* Also available in: YL=Yellow

** Also available in: OR=orange, GN=green, GY=grey, PL=purple, BL=blue, BR=brown, YL=yellow, RD=red.

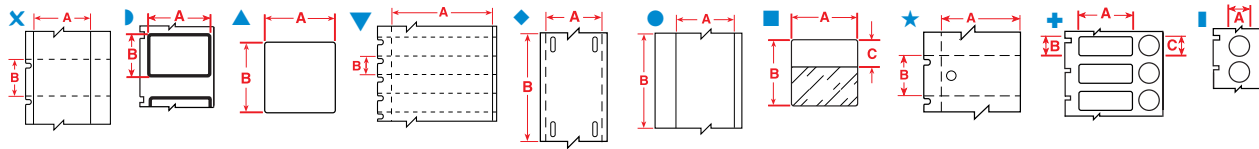
To order a color, add a dash "-" after the material number, then add the color suffix.

Standard product: Contact your Brady Identification Solutions distributor or Customer Service representative for ordering information.

*** PTL-64-427 has two write-on areas, one at each end of the label.

LABEL INDEX BY SIZE

CONTINUED



In. (mm)	Diagram	Part Number	Pieces Per Package	Material	Color	Label Width A Inch (mm)	Label Height B Inch (mm)	Write-On Height C Inch (mm)	Maximum Characters Per Line For Font:			Maximum Lines Of Text For Font:		
									2	7	10	2	7	10
1.00" (25.40 mm) Label Width (continued)														
●		PTL-42-432	50ft (15m)	Polyester	Clear	1.00 (25.40)	continuous		50	50	50	5	4	3
●		PTL-42-439	50ft (15m)	Vinyl	White	1.00 (25.40)	continuous		50	50	50	5	3	2
●		PTL-42-439-BK	50ft (15m)	Vinyl	Black	1.00 (25.40)	continuous		50	50	50	5	3	2
●		PTL-42-439-BL	50ft (15m)	Vinyl	Blue	1.00 (25.40)	continuous		50	50	50	5	3	2
●		PTL-42-439-GN	50ft (15m)	Vinyl	Green	1.00 (25.40)	continuous		50	50	50	5	3	2
●		PTL-42-439-OR	50ft (15m)	Vinyl	Orange	1.00 (25.40)	continuous		50	50	50	5	3	2
●		PTL-42-439-RD	50ft (15m)	Vinyl	Red	1.00 (25.40)	continuous		50	50	50	5	3	2
●		PTL-42-439-YL	50ft (15m)	Vinyl	Yellow	1.00 (25.40)	continuous		50	50	50	5	3	2
●		PTL-42-483	50ft (15m)	Polyester	White	1.00 (25.40)	continuous		50	50	50	5	3	2
1.06" (27.00 mm) Label Width														
▲	**	PTLEP-01-7595	250	PE/PU Laminate	White	1.06 (27.00)	0.31 (8.00)		26	11	0	3	1	0
▲	**	PTLEP-02-7595	250	PE/PU Laminate	White	1.06 (27.00)	0.50 (12.50)		26	11	7	5	2	1
▲	**	PTLEP-03-7595	150	PE/PU Laminate	White	1.06 (27.00)	0.60 (15.00)		26	11	7	6	3	2
▲	**	PTLEP-04-7595	150	PE/PU Laminate	White	1.06 (27.00)	0.71 (18.00)		26	11	7	8	4	2
1.13" (28.70 mm) Label Width														
▶		PTL-24-423-BK	500	Polyester	White	1.13 (28.70)	0.50 (12.70)		24	10	7	3	1	1
▶		PTL-24-428-BK	500	Metallized Polyester	Silver	1.13 (28.70)	0.50 (12.70)		24	10	7	3	1	1
▶		PTL-24-435-BK	500	Polyester	Metallized	1.13 (28.70)	0.50 (12.70)		24	10	7	3	1	1
▲		PTL-24-483-BK	500	Polyester	White	1.13 (28.70)	0.50 (12.70)		24	10	7	3	1	1
▲		PTL-24-486-BK	500	Polyester	Silver	1.13 (28.70)	0.50 (12.70)		24	10	7	3	1	1
1.18" (30.00 mm) Label Width														
▼	**	PTDSU-30-7596 *	2500	Vinyl	Yellow	1.18 (30.00)	0.16 (4.10)		27	0	0	1	0	0
		PTLFP-01-425	250	Polyolefin	White	1.18 (30.00)	0.39 (10.00)		26	12	8	3	2	1
		PTLFT-01-425	250	Polyolefin	White	1.18 (30.00)	0.39 (10.00)		26	12	8	3	2	1
1.25" (31.70 mm) Label Width														
▲		PTL-25-423	750	Polyester	White	1.25 (31.75)	0.25 (6.35)		31	13	0	2	1	0
▲		PTL-25-426	750	Polyimide	Amber	1.25 (31.75)	0.25 (6.35)		31	13	0	2	1	0
▲		PTL-25-457	750	Polyimide	White	1.25 (31.75)	0.25 (6.35)		31	13	0	2	1	0
▲		PTL-25-477	750	Polyimide	White	1.25 (31.75)	0.25 (6.35)		31	13	0	2	1	0
▲		PTL-25-478	750	Polyimide	White	1.25 (31.75)	0.25 (6.35)		31	13	0	2	1	0
▲		PTL-25-479	750	Polyimide	White	1.25 (31.75)	0.25 (6.35)		31	13	0	2	1	0
1.375" (34.93 mm) Label Width														
▲		PTL-65-483	250	Polyester	White	1.375 (34.93)	1.00 (25.40)		35	14	9	10	5	3
1.50" (38.10 mm) Label Width														
▲		PTL-27-423	750	Polyester	White	1.50 (38.10)	0.125 (3.18)		37	0	0	1	0	0
▲		PTL-27-426	750	Polyimide	Amber	1.50 (38.10)	0.125 (3.18)		37	0	0	1	0	0
▲		PTL-27-457	750	Polyimide	White	1.50 (38.10)	0.125 (3.18)		37	0	0	1	0	0
▲		PTL-27-477	750	Polyimide	White	1.50 (38.10)	0.125 (3.18)		37	0	0	1	0	0
▲		PTL-27-478	750	Polyimide	White	1.50 (38.10)	0.125 (3.18)		37	0	0	1	0	0
▲		PTL-27-479	750	Polyimide	White	1.50 (38.10)	0.125 (3.18)		37	0	0	1	0	0
▲		PTL-28-423	750	Polyester	White	1.50 (38.10)	0.25 (6.35)		37	15	0	2	1	0
▲		PTL-28-426	750	Polyimide	Amber	1.50 (38.10)	0.25 (6.35)		37	15	0	2	1	0
▲		PTL-28-430	750	Polyester	Clear	1.50 (38.10)	0.25 (6.35)		37	15	0	2	1	0
▲		PTL-28-457	750	Polyimide	White	1.50 (38.10)	0.25 (6.35)		37	15	0	2	1	0
▲		PTL-28-473	750	Polyester	White	1.50 (38.10)	0.25 (6.35)		37	15	0	2	1	0
▲		PTL-28-477	750	Polyimide	White	1.50 (38.10)	0.25 (6.35)		37	15	0	2	1	0
▲		PTL-28-478	750	Polyimide	White	1.50 (38.10)	0.25 (6.35)		37	15	0	2	1	0
▲		PTL-28-479	750	Polyimide	White	1.50 (38.10)	0.25 (6.35)		37	15	0	2	1	0
▲		PTL-45-422	500	Polyester	White	1.50 (38.10)	0.375 (9.525)		37	15	10	3	1	1
▲		PTL-45-430	500	Polyester	Clear	1.50 (38.10)	0.375 (9.525)		37	15	10	3	1	1
▲		PTL-29-422	500	Polyester	White	1.50 (38.10)	0.50 (12.70)		37	15	10	5	2	1
▲		PTL-29-423	500	Polyester	White	1.50 (38.10)	0.50 (12.70)		37	15	10	5	2	1
▲		BPTL-29-423	5000	Polyester	White	1.50 (38.10)	0.50 (12.70)		37	15	10	5	2	1
▲		PTL-29-428	500	Metallized	Silver	1.50 (38.10)	0.50 (12.70)		37	15	10	5	2	1
▲		PTL-29-430	500	Clear	Gloss	1.50 (38.10)	0.50 (12.70)		37	15	10	5	2	1
▲		PTL-29-434	500	Polyester	Metallized	1.50 (38.10)	0.50 (12.70)		37	15	10	5	2	1

Tedlar® is a registered trademark of DuPont.

Any label two inches or larger is rotated on liner.

Note: Labels in chart are sorted in order by width, height, 3 digit material number (within part number), then die number (within part number).

* Also available in: YL=Yellow

** Also available in: OR=orange, GN=green, GY=grey, PL=purple, BL=blue, BR=brown, YL=yellow, RD=red.

To order a color, add a dash "-" after the material number, then add the color suffix.

Standard product: Contact your Brady Identification Solutions distributor or Customer Service representative for ordering information.

** Available in Europe only.

LABEL INDEX BY SIZE

CONTINUED

In. (mm) Diagram	Part Number	Pieces Per Package	Material	Color	Label Width	Label Height	Write-On	Maximum Characters			Maximum Lines Of		
					A Inch (mm)	B Inch (mm)	Height C Inch (mm)	Per Line	For Font: 2	7	10	Text For Font: 2	7
1.50" (38.10 mm) Label Width (continued)													
▲	PTL-29-435	500	Polyester	Metallized	1.50 (38.10)	0.50 (12.70)		37	15	10	5	2	1
▲	PTL-29-437	500	Tedlar®	White	1.50 (38.10)	0.50 (12.70)		37	15	10	5	2	1
▲	PTL-29-459	500	Polyester	White	1.50 (38.10)	0.50 (12.70)		37	15	10	5	2	1
▲	PTL-29-483	500	Polyester	White	1.50 (38.10)	0.50 (12.70)		37	15	10	5	2	1
▲	PTL-29-486	500	Polyester	Silver	1.50 (38.10)	0.50 (12.70)		37	15	10	5	2	1
▲	PTL-29-489	500	Polyester	White	1.50 (38.10)	0.50 (12.70)		37	15	10	5	2	1
▲	PTL-30-422	250	Polyester	White	1.50 (38.10)	0.75 (19.05)		37	15	10	8	4	2
▲	PTL-30-427AW**	250	Vinyl	White	1.50 (38.10)	0.75 (19.05)		37	15	10	8	4	2
▲	PTL-30-435	250	Polyester	Metallized	1.50 (38.10)	0.75 (19.05)		37	15	10	8	4	2
▲	PTL-30-459	250	Polyester	White	1.50 (38.10)	0.75 (19.05)		37	15	10	8	4	2
▲	PTL-30-483	250	Polyester	White	1.50 (38.10)	0.75 (19.05)		37	15	10	8	4	2
▲	PTL-30-486	250	Polyester	Silver	1.50 (38.10)	0.75 (19.05)		37	15	10	8	4	2
▲	PTL-30-499	250	Vinyl	White	1.50 (38.10)	0.75 (19.05)		37	15	10	8	4	2
▲	PTL-31-351	250	Vinyl	White	1.50 (38.10)	1.00 (25.40)		37	15	10	10	5	3
▲	PTL-31-352	250	Vinyl	Silver	1.50 (38.10)	1.00 (25.40)		37	15	10	10	5	3
▲	PTL-31-423	250	Polyester	White	1.50 (38.10)	1.00 (25.40)		37	15	10	10	5	3
▲	PTL-31-435	250	Polyester	Metallized	1.50 (38.10)	1.00 (25.40)		37	15	10	10	5	3
▲	PTL-31-483	250	Polyester	White	1.50 (38.10)	1.00 (25.40)		37	15	10	10	5	3
▲	PTL-31-486	250	Polyester	Silver	1.50 (38.10)	1.00 (25.40)		37	15	10	10	5	3
▲	PTL-31-489	250	Polyester	White	1.50 (38.10)	1.00 (25.40)		37	15	10	10	5	3
▲	PTL-31-7546	250	Polyester	White	1.50 (38.10)	1.00 (25.40)		37	15	10	10	5	3
▲	PTL-31-7576	250	Polyester	Silver	1.50 (38.10)	1.00 (25.40)		37	15	10	10	5	3
▲	PTL-32-400	250	Vinyl Cloth	White	1.50 (38.10)	1.50 (38.10)		37	15	10	16	8	5
▲	PTL-32-422	250	Polyester	White	1.50 (38.10)	1.50 (38.10)		37	15	10	16	8	5
▲	PTL-32-423	250	Polyester	White	1.50 (38.10)	1.50 (38.10)		37	15	10	16	8	5
■	PTL-32-427**	250	Self-laminating Vinyl	Translucent	1.50 (38.10)	1.50 (38.10)	0.50 (12.70)	37	15	10	5	2	1
■	BPTL-32-427	2500	Self-laminating Vinyl	Translucent	1.50 (38.10)	1.50 (38.10)	0.50 (12.70)	37	15	10	5	2	1
▲	PTL-32-435	250	Polyester	Metallized	1.50 (38.10)	1.50 (38.10)		37	15	10	16	8	5
▲	PTL-32-483	250	Polyester	White	1.50 (38.10)	1.50 (38.10)		37	15	10	16	8	5
▲	PTL-32-486	250	Polyester	Silver	1.50 (38.10)	1.50 (38.10)		37	15	10	16	8	5
▲	PTL-32-489	250	Polyester	White	1.50 (38.10)	1.50 (38.10)		37	15	10	16	8	5
▲	PTL-33-400	100	Vinyl Cloth	White	1.50 (38.10)	4.00 (101.60)		37	15	10	16	8	2
■	PTL-33-427**	100	Self-laminating Vinyl	Translucent	1.50 (38.10)	4.00 (101.60)	1.00 (25.40)	37	15	10	10	5	3
■	BPTL-33-427**	500	Self-laminating Vinyl	Translucent	1.50 (38.10)	4.00 (101.60)	1.00 (25.40)	37	15	10	10	5	3
▲	PTL-34-400	50	Vinyl Cloth	White	1.50 (38.10)	6.00 (152.40)		37	15	10	22	22	21
■	PTL-34-427**	50	Self-laminating Vinyl	Translucent	1.50 (38.10)	6.00 (152.40)	1.50 (38.10)	37	15	10	16	8	5
■	BPTL-34-427	500	Self-laminating Vinyl	Translucent	1.50 (38.10)	6.00 (152.40)	1.50 (38.10)	37	15	10	16	8	5
●	PTLCM-41-437W	50ft (15m)	Tedlar®	White	1.50 (38.10)	continuous		50	50	50	14	7	4
●	PTLCM-41-437Y	50ft (15m)	Tedlar	Yellow	1.50 (38.10)	continuous		50	50	50	14	7	4
1.57" (40.00 mm) Label Width													
▲	**PTL-48-412	500	Polypropylene	White	1.57 (40.00)	0.35 (9.00)		35	15	10	2	1	1
1.625" (41.28 mm) Label Width													
▲	PTL-76-461	250	Polyester	White	1.625 (41.28)	0.60 (15.24)	0.60 (15.24)	35	15	10	2	1	1
1.75" (44.45 mm) Label Width													
★	PTL-36-109	250	Polyethylene	White	1.75 (44.45)	1.125 (28.57)		27	11	7	15	7	5
1.80" (45.72 mm) Label Width													
★	PTL-73-461	500	Polyester	White	1.80 (45.72)	0.375 (9.53)	0.375 (9.53)	27	11	7	15	7	5
★	PTL-72-461	500	Polyester	White	1.80 (45.72)	0.50 (12.70)	0.50 (12.70)	27	11	7	15	7	5
1.90" (48.26 mm) Label Width													
●	PTL-81-488	750	Polyester	White	1.90 (48.26)	0.25 (6.35)		50	50	50	10	6	4
●	PTL-81-499	750	Nylon Cloth	Yellow	1.90 (48.26)	0.25 (6.35)		50	50	50	10	6	4
●	PTL-78-427AW	250	Vinyl	White	1.90 (48.26)	1.00 (25.40)		50	50	50	10	6	4
●	PTL-78-499	250	Nylon Cloth	White	1.90 (48.26)	1.00 (25.40)		50	50	50	10	6	4
●	PTL-43-422	50ft (15m)	Polyester	White	1.90 (48.26)	continuous		50	50	50	10	6	4
●	PTL-43-430	50ft (15m)	Polyester	Clear	1.90 (48.26)	continuous		50	50	50	10	6	4
●	PTL-43-439	50ft (15m)	Vinyl	White	1.90 (48.26)	continuous		50	50	50	10	6	4
●	PTL-43-439-BK	50ft (15m)	Vinyl	Black	1.90 (48.26)	continuous		50	50	50	10	6	4
●	PTL-43-439-BL	50ft (15m)	Vinyl	Blue	1.90 (48.26)	continuous		50	50	50	10	6	4
●	PTL-43-439-GN	50ft (15m)	Vinyl	Green	1.90 (48.26)	continuous		50	50	50	10	6	4
●	PTL-43-439-OR	50ft (15m)	Vinyl	Orange	1.90 (48.26)	continuous		50	50	50	10	6	4
●	PTL-43-439-RD	50ft (15m)	Vinyl	Red	1.90 (48.26)	continuous		50	50	50	10	6	4
●	PTL-43-439-YL	50ft (15m)	Vinyl	Yellow	1.90 (48.26)	continuous		50	50	50	10	6	4
●	PTL-43-483	50ft (15m)	Polyester	White	1.90 (48.26)	continuous		50	50	50	10	6	4

Any label two inches or larger is rotated on liner.

** Available in Europe only.

Note: Labels in chart are sorted in order by width, height, 3 digit material number (within part number), then die number (within part number).

* Also available in: YL=Yellow

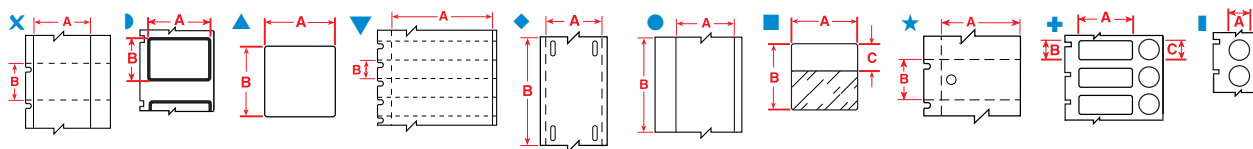
** Also available in: OR=orange, GN=green, GY=grey, PL=purple, BL=blue, BR=brown, YL=yellow, RD=red.

To order a color, add a dash "-" after the material number, then add the color suffix.

Standard product: Contact your Brady Identification Solutions distributor or Customer Service representative for ordering information.

LABEL INDEX BY SIZE

CONTINUED



In. (mm)	Diagram	Part Number	Pieces Per Package	Material	Color	Label Width A Inch (mm)	Label Height B Inch (mm)	Write-On Height C Inch (mm)	Maximum Characters Per Line For Font:			Maximum Lines Of Text For Font:		
									2	7	10	2	7	10
1.938" (49.23 mm) Label Width														
	▼	PTL-40-412	750	Polypropylene	White	1.938 (49.23)	0.375 (9.53)		40	17	11	3	1	1
	▼	BPTL-40-412	5000	Polypropylene	White	1.938 (49.23)	0.375 (9.53)		40	17	11	3	1	1
	■	PTL-66-427	100	Vinyl	White	1.938 (49.23)	3.15 (80.00)	1.00 (25.40)	46	19	13	10	5	3
2.00" (50.80 mm) Label Width														
	▲	PTL-2-423	100	Polyester	White	2.00 (50.80)	0.25 (6.35)		46	19	0	2	1	0
	▲	PTL-2-426	100	Polyimide	Amber	2.00 (50.80)	0.25 (6.35)		46	19	0	2	1	0
	▲	PTL-2-457	100	Polyimide	White	2.00 (50.80)	0.25 (6.35)		46	19	0	2	1	0
	▲	PTL-2-477	100	Polyimide	White	2.00 (50.80)	0.25 (6.35)		46	19	0	2	1	0
	▲	PTL-2-478	100	Polyimide	White	2.00 (50.80)	0.25 (6.35)		46	19	0	2	1	0
	▲	PTL-2-479	100	Polyimide	White	2.00 (50.80)	0.25 (6.35)		46	19	0	2	1	0
	▲	PTL-20-351	100	Vinyl	White	2.00 (50.80)	1.00 (25.40)		46	19	13	10	5	3
	▲	PTL-20-352	100	Vinyl	Silver	2.00 (50.80)	1.00 (25.40)		46	19	13	10	5	3
	▲	PTL-20-422	100	Polyester	White	2.00 (50.80)	1.00 (25.40)		46	19	13	10	5	3
	▲	BPTL-20-422	1000	Polyester	White	2.00 (50.80)	1.00 (25.40)		46	19	13	10	5	3
	▲	PTL-20-423	100	Polyester	White	2.00 (50.80)	1.00 (25.40)		46	19	13	10	5	3
	▲	BPTL-20-423	1000	Polyester	White	2.00 (50.80)	1.00 (25.40)		46	19	13	10	5	3
	▲	PTL-20-424	100	Paper	White	2.00 (50.80)	1.00 (25.40)		46	19	13	10	5	3
	▲	BPTL-20-424	1000	Paper	White	2.00 (50.80)	1.00 (25.40)		46	19	13	10	5	3
	▲	PTL-20-428	100	Metallized Polyester	Silver	2.00 (50.80)	1.00 (25.40)		46	19	13	10	5	3
	▲	BPTL-20-428	1000	Metallized Polyester	Silver	2.00 (50.80)	1.00 (25.40)		46	19	13	10	5	3
	▲	PTL-20-435	100	Polyester	Metallized	2.00 (50.80)	1.00 (25.40)		46	19	13	10	5	3
	▲	PTL-20-459	100	Polyester	White	2.00 (50.80)	1.00 (25.40)		46	19	13	10	5	3
	▲	PTL-20-483	100	Polyester	White	2.00 (50.80)	1.00 (25.40)		46	19	13	10	5	3
	▲	PTL-20-486	100	Polyester	Silver	2.00 (50.80)	1.00 (25.40)		46	19	13	10	5	3
	▲	PTL-20-489	100	Polyester	White	2.00 (50.80)	1.00 (25.40)		46	19	13	10	5	3
	▲	PTL-20-7546	100	Polyester	White	2.00 (50.80)	1.00 (25.40)		46	19	13	10	5	3
	▲	PTL-20-7576	100	Polyester	Silver	2.00 (50.80)	1.00 (25.40)		46	19	13	10	5	3
2.20" (55.88 mm) Label Width														
	■	PTL-74-427	100	Vinyl	White	2.20 (55.88)	0.50 (12.70)	0.50 (12.70)	46	19	0	2	1	0
	■	PTL-74-461	100	Polyester	White	2.20 (55.88)	0.50 (12.70)	0.50 (12.70)	46	19	0	2	1	0
2.625" (66.68 mm) Label Width														
	■	PTL-75-427	100	Vinyl	White	2.625 (66.68)	1.00 (24.40)	1.00 (25.4)	46	19	0	2	1	0
	■	BPTL-75-461	1000	Polyester	White	2.625 (66.68)	1.00 (24.40)	1.00 (25.4)	46	19	0	2	1	0
	■	PTL-75-461 *	100	Polyester	White	2.625 (66.68)	1.00 (24.40)	1.00 (25.4)	46	19	0	2	1	0
2.75" (69.85 mm) Label Width														
	▲	PTL-26-423	100	Polyester	White	2.75 (69.85)	1.25 (31.75)		50	29	19	13	6	4
	▲	PTL-26-428	100	Polyester	Silver	2.75 (69.85)	1.25 (31.75)		50	29	19	13	6	4
	▲	PTL-26-459	100	Polyester	White	2.75 (69.85)	1.25 (31.75)		50	29	19	13	6	4
3.00" (76.20 mm) Label Width														
	▲	PTL-22-422	100	Polyester	White	3.00 (76.20)	1.00 (25.40)		50	31	21	10	5	3
	▲	PTL-22-423	100	Polyester	White	3.00 (76.20)	1.00 (25.40)		50	31	21	10	5	3
	▲	PTL-22-424	100	Paper	White	3.00 (76.20)	1.00 (25.40)		50	31	21	10	5	3
	▲	PTL-22-428	100	Polyester	Silver	3.00 (76.20)	1.00 (25.40)		50	31	21	10	5	3
	▲	PTL-22-459	100	Polyester	White	3.00 (76.20)	1.00 (25.40)		50	31	21	10	5	3
	▲	PTL-37-351	100	Vinyl	White	3.00 (76.20)	1.90 (48.26)		50	31	21	20	10	6
	▲	PTL-37-352	100	Vinyl	Silver	3.00 (76.20)	1.90 (48.26)		50	31	21	20	10	6
	▲	PTL-37-422	100	Polyester	White	3.00 (76.20)	1.90 (48.26)		50	31	21	20	10	6
	▲	PTL-37-423	100	Polyester	White	3.00 (76.20)	1.90 (48.26)		50	31	21	20	10	6
	▲	PTL-37-424	100	Paper	White	3.00 (76.20)	1.90 (48.26)		50	31	21	20	10	6
	▲	PTL-37-428	100	Polyester	Silver	3.00 (76.20)	1.90 (48.26)		50	31	21	20	10	6
	▲	PTL-37-435	100	Polyester	Metallized	3.00 (76.20)	1.90 (48.26)		50	31	21	20	10	6
	▲	PTL-37-483	100	Polyester	White	3.00 (76.20)	1.90 (48.26)		50	31	21	20	10	6
	▲	PTL-37-486	100	Polyester	Silver	3.00 (76.20)	1.90 (48.26)		50	31	21	20	10	6
	▲	PTL-37-489	100	Polyester	White	3.00 (76.20)	1.90 (48.26)		50	31	21	20	10	6
	▲	PTL-37-7546	100	Polyester	White	3.00 (76.20)	1.90 (48.26)		50	31	21	20	10	6
	▲	PTL-37-7576	100	Polyester	Silver	3.00 (76.20)	1.90 (48.26)		50	31	21	20	10	6

Tedlar® is a registered trademark of DuPont.

Any label two inches or larger is rotated on liner.

Note: Labels in chart are sorted in order by width, height, 3 digit material number (within part number), then die number (within part number).

* Also available in: YL=Yellow

** Also available in: OR=orange, GN=green, GY=grey, PL=purple, BL=blue, BR=brown, YL=yellow, RD=red.

To order a color, add a dash "-" after the material number, then add the color suffix.

Standard product: Contact your Brady Identification Solutions distributor or Customer Service representative for ordering information.

LABEL INDEX BY SIZE

CONTINUED

In. (mm) Diagram	Part Number	Pieces Per Package	Material	Color	Label Width A Inch (mm)	Label Height B Inch (mm)	Write-On Height C Inch (mm)	Maximum Characters Per Line For Font:			Maximum Lines Of Text For Font:		
								2	7	10	2	7	10
3.50" (88.90 mm) Label Width													
■	PTL-77-461	250	Polyester	White	3.50 (88.90)	1.50 (38.10)	1.50 (38.10)	50	42	28	9	5	3
3.75" (95.25 mm) Label Width													
■	PTL-79-461	100	Polyester	White	3.75 (95.25)	0.75 (19.05)	0.75 (19.05)	50	42	28	9	5	3
4.00" (101.60 mm) Label Width													
▲	PTL-23-422	100	Polyester	White	4.00 (101.60)	1.00 (25.40)		50	42	28	9	5	3
▲	PTL-23-423	100	Polyester	White	4.00 (101.60)	1.00 (25.40)		50	42	28	9	5	3
▲	PTL-23-483	100	Polyester	White	4.00 (101.60)	1.00 (25.40)		50	42	28	9	5	3
▲	PTL-23-499	100	Nylon Cloth	White	4.00 (101.60)	1.00 (25.40)		50	42	28	9	5	3
▲	PTL-38-422	100	Polyester	White	4.00 (101.60)	1.90 (48.26)		50	41	30	20	10	6
▲	PTL-38-423	100	Polyester	White	4.00 (101.60)	1.90 (48.26)		50	41	30	20	10	6
▲	PTL-38-424	100	Paper	White	4.00 (101.60)	1.90 (48.26)		50	41	30	20	10	6
▲	PTL-38-428	100	Polyester	Silver	4.00 (101.60)	1.90 (48.26)		50	41	30	20	10	6
▲	PTL-38-435	100	Polyester	Metallized	4.00 (101.60)	1.90 (48.26)		50	41	30	20	10	6
▲	PTL-38-459	100	Polyester	White	4.00 (101.60)	1.90 (48.26)		50	41	30	20	10	6
▲	PTL-38-483	100	Polyester	White	4.00 (101.60)	1.90 (48.26)		50	41	30	20	10	6
▲	PTL-38-486	100	Polyester	Silver	4.00 (101.60)	1.90 (48.26)		50	41	30	20	10	6
▲	PTL-38-489	100	Polyester	White	4.00 (101.6)	1.90 (48.26)		50	41	30	20	10	6

Any label two inches or larger is rotated on liner.

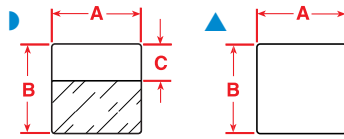
Note: Labels in chart are sorted in order by width, height, 3 digit material number (within part number), then die number (within part number).

* Also available in: YL=Yellow

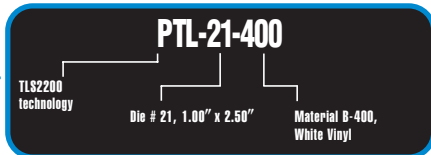
** Also available in: OR=orange, GN=green, GY=grey, PL=purple, BL=blue, BR=brown, YL=yellow, RD=red.
To order a color, add a dash "-" after the material number, then add the color suffix.

Standard product: Contact your Brady Identification Solutions distributor or Customer Service representative for ordering information.

ELECTRICAL APPLICATION LABELS



CABLE MARKING LABELS



PART NUMBER EXPLANATION:

Most Brady part numbers for printable labels follow the same three-part format:

The first code indicates the technology, the second part is a number indicating the die size used (where applicable) and the third part indicates the Brady material used (where applicable).

Repositional Vinyl Cloth (B-400), Self-Laminating Vinyl (B-427), Nylon Cloth (B-499), Self-Laminating Tedlar® (B-642)

Diagram	Part Number	Labels Per Roll	Label Dimensions			Write-On Height Inch (mm)	Maximum Characters Per Line For Font:			Maximum Lines Of Text For Font:		
			Inch (mm)	Inch (mm)	Inch (mm)		2	7	10	2	7	10
▲	PTL-21-400	100	1.00 (25.40)	2.50 (63.50)	0.75 (19.05)	24	10	7	23	14	9	
▶	PTL-21-427**	100	1.00 (25.40)	2.50 (63.50)	0.75 (19.05)	24	10	7	8	4	2	
▶	BPTL-21-427	1000	1.00 (25.40)	2.50 (63.50)	0.75 (19.05)	24	10	7	8	4	2	
▲	PTL-21-499	100	1.00 (25.40)	2.50 (63.50)	0.75 (19.05)	24	10	7	8	4	2	
▶	PTL-21-642	100	1.00 (25.40)	2.50 (63.50)	0.75 (19.05)	24	10	7	8	4	2	
▲	PTL-23-400	100	1.00 (25.40)	4.00 (101.60)	1.00 (25.40)	24	10	7	23	22	15	
▶	PTL-23-427**	100	1.00 (25.40)	4.00 (101.60)	1.00 (25.40)	24	10	7	10	5	3	
▶	BPTL-23-427	100	1.00 (25.40)	4.00 (101.60)	1.00 (25.40)	24	10	7	10	5	3	
▲	PTL-33-400	100	1.50 (38.10)	4.00 (101.60)	1.00 (25.40)	37	15	10	23	22	15	
▶	PTL-33-427**	100	1.50 (38.10)	4.00 (101.60)	1.00 (25.40)	37	15	10	10	5	3	
▶	BPTL-33-427	500	1.50 (38.10)	4.00 (101.60)	1.00 (25.40)	37	15	10	10	5	3	
▲	PTL-34-400	50	1.50 (38.10)	6.00 (152.40)	1.50 (38.10)	37	15	10	22	22	21	
▶	PTL-34-427**	50	1.50 (38.10)	6.00 (152.40)	1.50 (38.10)	37	15	10	16	8	5	
▶	BPTL-34-427	500	1.50 (38.10)	6.00 (152.40)	1.50 (38.10)	37	15	10	16	8	5	

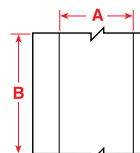
** Also available in: OR=orange, GN=green, GY=grey, PL=purple, BL=blue, BR=brown, YL=yellow, RD=red.

To order a color, add a dash "-" after the material number, then add the color suffix.

Standard product: Contact your Brady Identification Solutions distributor or Customer Service representative for ordering information.



White or Yellow Tedlar® Film (B-437) (Roll-form cable marking, cut to length)



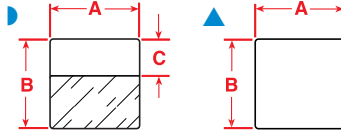
Part Number	Roll Length	Label Dimensions		Maximum Characters Per Line For Font:			Maximum Lines Of Text For Font:		
		Inch (mm)	Inch (mm)	2	7	10	2	7	10
PTLCM-41-437W	50ft (15m)	1.50 (38.10)	continuous	37	15	10	14	7	4
PTLCM-41-437Y	50ft (15m)	1.50 (38.10)	continuous	37	15	10	14	7	4

Tedlar® is a registered trademark of DuPont.

ELECTRICAL APPLICATION LABELS

CONTINUED

WIRE MARKING LABELS



Repositional Vinyl Cloth (B-400), Self-Laminating Vinyl (B-427), Nylon Cloth (B-499), Self-Laminating Tedlar® (B-642)

Diagram	Part Number	Labels Per Roll	Label Dimensions		Write-On Height Inch (mm)	Maximum Characters Per Line For Font:			Maximum Lines Of Text For Font:		
			Inch (mm) A	Inch (mm) B		2	7	10	2	7	10
4 to 10 GAUGE WIRE (AWG) Based on THHN Wire - Maximum Wire Diameter - .26" (6.64mm)											
▲	PTL-28-499	750	0.25 (6.35)	1.50 (38.10)		5	2	1	16	8	5
▲	PTL-28-400	750	0.25 (6.35)	1.50 (38.10)		5	2	1	16	8	5
▶	PTL-28-427**	750	0.25 (6.35)	1.50 (38.10)	0.50 (12.70)	5	2	1	5	2	1
▲	PTL-29-400	500	0.50 (12.70)	1.50 (38.10)		11	5	3	16	8	5
▲	BPTL-29-400	5000	0.50 (12.70)	1.50 (38.10)		11	5	3	16	8	5
▶	PTL-29-427**	500	0.50 (12.70)	1.50 (38.10)	0.50 (12.70)	11	5	3	5	2	1
▲	PTL-29-499	500	0.50 (12.70)	1.50 (38.10)		11	5	3	16	8	5
▲	PTL-30-400	250	0.75 (19.05)	1.50 (38.10)		18	7	5	16	8	5
▶	PTL-30-427**	250	0.75 (19.05)	1.50 (38.10)	0.50 (12.70)	18	7	5	5	2	1
▶	BPTL-30-427	2500	0.75 (19.05)	1.50 (38.10)	0.50 (12.70)	18	7	5	5	2	1
▲	PTL-30-499	250	0.75 (19.05)	1.50 (38.10)		18	7	5	16	8	5
▶	PTL-31-427**	250	1.00 (25.40)	1.50 (38.10)	0.50 (12.70)	24	10	7	5	2	1
▶	BPTL-31-427	2500	1.00 (25.40)	1.50 (38.10)	0.50 (12.70)	24	10	7	5	2	1
▶	PTL-31-499	250	1.00 (25.40)	1.50 (38.10)		24	10	7	16	8	5
▲	PTL-31-400	250	1.00 (25.40)	1.50 (38.10)		24	10	7	16	8	5
▶	PTL-31-642	250	1.00 (25.40)	1.50 (38.10)	0.50 (12.70)	24	10	7	5	2	1
▶	PTL-32-427**	250	1.50 (38.10)	1.50 (38.10)	0.50 (12.70)	37	15	10	5	2	1
▶	BPTL-32-427	2500	1.50 (38.10)	1.50 (38.10)	0.50 (12.70)	37	15	10	5	2	1
10 to 12 GAUGE WIRE (AWG) Based on THHN Wire - Maximum Wire Diameter - .21" (5.30mm)											
▲	PTL-16-400	500	0.375 (9.52)	1.00 (25.40)		8	3	2	10	5	3
▲	PTL-16-499	500	0.375 (9.52)	1.00 (25.40)		8	3	2	10	5	3
▶	PTL-17-427*	500	0.50 (12.70)	1.00 (25.40)	0.375 (9.53)	11	5	3	3	1	1
▶	BPTL-17-427	5000	0.50 (12.70)	1.00 (25.40)	0.375 (9.53)	11	5	3	3	1	1
▲	PTL-18-400	250	0.75 (19.05)	1.00 (25.40)		18	7	5	10	5	3
▲	BPTL-18-400	2500	0.75 (19.05)	1.00 (25.40)		18	7	5	10	5	3
▲	PTL-18-499	250	0.75 (19.05)	1.00 (25.40)		18	7	5	10	5	3
▶	PTL-18-427*	250	0.75 (19.05)	1.00 (25.40)	0.375 (9.53)	18	7	5	3	1	1
▶	BPTL-18-427	2500	0.75 (19.05)	1.00 (25.40)	0.375 (9.53)	18	7	5	3	1	1
▲	PTL-19-400	250	1.00 (25.40)	1.00 (25.40)		24	10	7	10	5	3
▲	BPTL-19-400	2500	1.00 (25.40)	1.00 (25.40)		24	10	7	10	5	3
▲	PTL-19-499	250	1.00 (25.40)	1.00 (25.40)		24	10	7	10	5	3
▶	PTL-19-427**	250	1.00 (25.40)	1.00 (25.40)	0.375 (9.53)	24	10	7	3	1	1
▶	BPTL-19-427	2500	1.00 (25.40)	1.00 (25.40)	0.375 (9.53)	24	10	7	3	1	1
▶	PTL-19-642	250	1.00 (25.40)	1.00 (25.40)	0.375 (9.53)	24	10	7	3	1	1
10 to 16 GAUGE WIRE (AWG) Based on THHN Wire - Maximum Wire Diameter - .16" (4.10 mm)											
▶	PTL-10-427*	750	0.25 (6.35)	0.75 (19.05)	0.375 (9.53)	5	2	1	3	1	1
▲	PTL-11-400	500	0.50 (12.70)	0.75 (19.05)		11	5	3	8	4	2
▲	BPTL-11-400	5000	0.50 (12.70)	0.75 (19.05)		11	5	3	8	4	2
▶	PTL-11-427*	500	0.50 (12.70)	0.75 (19.05)	0.375 (9.53)	11	5	3	3	1	1
▶	BPTL-11-427	5000	0.50 (12.70)	0.75 (19.05)	0.375 (9.53)	11	5	3	3	1	1
▲	PTL-11-499	500	0.50 (12.70)	0.75 (19.05)		11	5	3	8	4	2
▲	BPTL-11-499	5000	0.50 (12.70)	0.75 (19.05)		11	5	3	8	4	2
16 to 22 GAUGE WIRE (AWG) Based on THHN Wire - Maximum Wire Diameter - .11" (2.80 mm)											
▲	PTL-7-400	500	0.50 (12.70)	0.50 (12.70)		11	5	3	5	2	1
▲	PTL-7-499	500	0.50 (12.70)	0.50 (12.70)		11	5	3	5	2	1

Tedlar® is a registered trademark of DuPont.

* Also available in: YL=Yellow

** Also available in: OR=orange, GN=green, GY=grey, PL=purple, BL=blue, BR=brown, YL=yellow, RD=red.

To order a color, add a dash "-" after the material number, then add the color suffix.

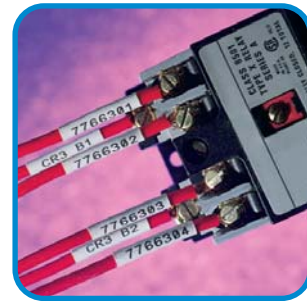
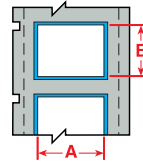
Standard product: Contact your Brady Identification Solutions distributor or Customer Service representative for ordering information.

ELECTRICAL APPLICATION LABELS

CONTINUED

PERMASLEEVE™ WIRE MARKING SLEEVES

Heat-Shrinkable White Polyolefin (B-342)



Part Number	Sleeves Per Roll	Sleeve Dimensions		Range of Wire Dia.		Approx. Wire Gauge*	Maximum Characters Per Line For Font:			Maximum Lines Of Text For Font:		
		A Inch (mm)	B Inch (mm)	Inch (mm) Min	Inch (mm) Max		2	7	10	2	7	10
1.01" Marker Width												
WHITE 3:1 SHRINK RATIO												
PSPT-094-1W	100	1.015 (25.78)	.182 (4.62)	.023 (0.58)	.080 (2.03)	28-18	22	0	0	1	0	0
BPSPT-094-1W	2500	1.015 (25.78)	.182 (4.62)	.023 (0.58)	.080 (2.03)	28-18	22	0	0	1	0	0
PSPT-125-1W	100	1.015 (25.78)	.235 (5.96)	.046 (1.17)	.110 (2.79)	22-16	22	0	0	1	0	0
BPSPT-125-1W	1000	1.015 (25.78)	.235 (5.96)	.046 (1.17)	.110 (2.79)	22-16	22	0	0	1	0	0
PSPT-187-1W	100	1.015 (25.78)	.335 (8.50)	.062 (1.57)	.150 (3.81)	18-12	22	9	0	2	1	0
BPSPT-187-1W	1000	1.015 (25.78)	.335 (8.50)	.062 (1.57)	.150 (3.81)	18-12	22	9	0	2	1	0
PSPT-250-1W	100	1.015 (25.78)	.439 (11.15)	.094 (2.39)	.215 (5.46)	16-10	22	9	6	3	1	1
BPSPT-250-1W	1000	1.015 (25.78)	.439 (11.15)	.094 (2.39)	.215 (5.46)	16-10	22	9	6	3	1	1
PSPT-375-1W	100	1.015 (25.78)	.645 (16.38)	.125 (3.18)	.320 (8.13)	12-6	22	9	6	5	2	1
BPSPT-375-1W	100	1.015 (25.78)	.645 (16.38)	.125 (3.18)	.320 (8.13)	12-6	22	9	6	5	2	1
PSPT-500-1W	100	1.015 (25.78)	.851 (21.61)	.187 (4.75)	.450 (11.43)	8-1	22	9	6	7	3	2
BPSPT-500-1W	100	1.015 (25.78)	.851 (21.61)	.187 (4.75)	.450 (11.43)	8-1	22	9	6	7	3	2
PSPT-1000-1W	50	1.015 (25.78)	1.660 (42.16)	.450 (11.43)	.950 (24.13)	1-500	22	9	6	16	8	5
YELLOW 3:1 SHRINK RATIO												
PSPT-094-1Y	100	1.015 (25.78)	.182 (4.62)	.023 (0.58)	.080 (2.03)	28-18	22	0	0	1	0	0
PSPT-125-1Y	100	1.015 (25.78)	.235 (5.96)	.046 (1.17)	.110 (2.79)	22-16	22	0	0	1	0	0
PSPT-187-1Y	100	1.015 (25.78)	.335 (8.50)	.062 (1.57)	.150 (3.81)	18-12	22	9	0	2	1	0
PSPT-250-1Y	100	1.015 (25.78)	.439 (11.15)	.094 (2.39)	.215 (5.46)	16-10	22	9	6	3	1	1
PSPT-375-1Y	100	1.015 (25.78)	.645 (16.38)	.125 (3.18)	.320 (8.13)	12-6	22	9	6	5	2	1
PSPT-500-1Y	100	1.015 (25.78)	.851 (21.61)	.187 (4.75)	.450 (11.43)	8-1	22	9	6	7	3	2
PSPT-1000-1Y	50	1.015 (25.78)	1.660 (42.16)	.450 (11.43)	.950 (24.13)	1-500	22	9	6	16	8	5
1.76" Marker Width												
WHITE 3:1 SHRINK RATIO												
PSPT-094-175W	100	1.765 (44.83)	.182 (4.62)	.023 (0.58)	.080 (2.03)	28-18	41	0	0	1	0	0
BPSPT-094-175W	2500	1.765 (44.83)	.182 (4.62)	.023 (0.58)	.080 (2.03)	28-18	41	0	0	1	0	0
PSPT-125-175W	100	1.765 (44.83)	.235 (5.96)	.046 (1.17)	.110 (2.79)	22-16	41	0	0	1	0	0
BPSPT-125-175W	1000	1.765 (44.83)	.235 (5.96)	.046 (1.17)	.110 (2.79)	22-16	41	0	0	1	0	0
** BPSPT-125-175YL	1000	1.765 (44.83)	.235 (5.96)	.046 (1.17)	.110 (2.79)	22-16	41	0	0	1	0	0
PSPT-187-175W	100	1.765 (44.83)	.335 (8.50)	.062 (1.57)	.150 (3.81)	18-12	41	17	11	3	1	1
BPSPT-187-175W	1000	1.765 (44.83)	.335 (8.50)	.062 (1.57)	.150 (3.81)	18-12	41	17	11	3	1	1
** BPSPT-187-175YL	1000	1.765 (44.83)	.335 (8.50)	.062 (1.57)	.150 (3.81)	18-12	41	17	11	3	1	1
PSPT-250-175W	100	1.765 (44.83)	.439 (11.15)	.094 (2.39)	.215 (5.46)	16-10	41	17	11	3	1	1
BPSPT-250-175W	1000	1.765 (44.83)	.439 (11.15)	.094 (2.39)	.215 (5.46)	16-10	41	17	11	3	1	1
** BPSPT-250-175YL	1000	1.765 (44.83)	.439 (11.15)	.094 (2.39)	.215 (5.46)	16-10	41	17	11	3	1	1
PSPT-375-175W	100	1.765 (44.83)	.645 (16.38)	.125 (3.18)	.320 (8.13)	12-6	41	17	11	5	2	1
BPSPT-375-175W	1000	1.765 (44.83)	.645 (16.38)	.125 (3.18)	.320 (8.13)	12-6	41	17	11	5	2	1
PSPT-500-175W	100	1.765 (44.83)	.851 (21.61)	.187 (4.75)	.450 (11.43)	8-1	41	17	11	7	3	2
BPSPT-500-175W	1000	1.765 (44.83)	.851 (21.61)	.187 (4.75)	.450 (11.43)	8-1	41	17	11	7	3	2
PSPT-1000-175W	50	1.765 (44.83)	1.660 (42.16)	.450 (11.43)	.950 (24.13)	1-500	41	17	11	16	8	5
BPSPT-1000-175W	500	1.765 (44.83)	1.660 (42.16)	.450 (11.43)	.950 (24.13)	1-500	41	17	11	16	8	5
YELLOW 3:1 SHRINK RATIO												
PSPT-094-175Y	100	1.765 (44.83)	.182 (4.62)	.023 (0.58)	.080 (2.03)	28-18	41	0	0	1	0	0
PSPT-125-175Y	100	1.765 (44.83)	.235 (5.96)	.046 (1.17)	.110 (2.79)	22-16	41	0	0	1	0	0
PSPT-187-175Y	100	1.765 (44.83)	.335 (8.50)	.062 (1.57)	.150 (3.81)	18-12	41	17	11	3	1	1
PSPT-250-175Y	100	1.765 (44.83)	.439 (11.15)	.094 (2.39)	.215 (5.46)	16-10	41	17	11	3	1	1
PSPT-375-175Y	100	1.765 (44.83)	.645 (16.38)	.125 (3.18)	.320 (8.13)	12-6	41	17	11	5	2	1
PSPT-500-175Y	100	1.765 (44.83)	.851 (21.61)	.187 (4.75)	.450 (11.43)	8-1	41	17	11	7	3	2
PSPT-1000-175Y	50	1.765 (44.83)	1.660 (42.16)	.450 (11.43)	.950 (24.13)	1-500	41	17	11	16	8	5

* Based on National Electric Code insulation measurement of THHN Wire.

** Available in Europe only.

Note: Labels are sorted in order by width, height, 3 digit material number (within part number), then die number (within part number).

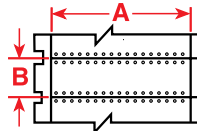
ELECTRICAL APPLICATION LABELS

CONTINUED



BRADYSLEEVE™ WIRE MARKING SLEEVES

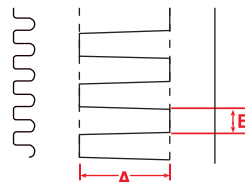
Heat-Shrinkable White Polyolefin (B-321)



Part Number	Sleeves Per Roll	Sleeve Dimensions		Range of Wire Dia.		Approx. Wire Gauge*	Maximum Characters Per Line For Font:			Maximum Lines Of Text For Font:		
		A Inch (mm)	B Inch (mm)	Inch (mm) Min	Inch (mm) Max		2	7	10	2	7	10
.45" Sleeve Width												
PTS.45-350-321	500	.450 (11.43)	.350 (8.89)	.075 (1.90)	.160 (4.06)	10-16	9	3	0	2	1	0
PTS.45-500-321	500	.450 (11.43)	.500 (12.7)	.160 (4.06)	.235 (5.97)	8-10	9	3	2	4	2	1
.95" Sleeve Width												
PTS.95-350-321	500	.950 (24.13)	.350 (8.89)	.075 (1.90)	.160 (4.06)	10-16	21	9	0	2	1	0
PTS.95-500-321	500	.950 (24.13)	.500 (12.7)	.160 (4.06)	.235 (5.97)	8-10	21	9	6	4	2	1
PTS.95-750-321	250	.950 (24.13)	.750 (19.05)	.335 (8.51)	.390 (9.91)	2-4	21	9	6	7	3	2
PTS.95-1000-321	250	.950 (24.13)	1.00 (25.4)	.375 (9.53)	.540 (13.72)	00-1	21	9	6	10	5	3
1.90" Sleeve Width												
PTS1.90-350-321	500	1.90 (48.26)	.350 (8.89)	.075 (1.90)	.160 (4.06)	10-16	44	18	0	2	1	0
PTS1.90-500-321	500	1.90 (48.26)	.500 (12.7)	.160 (4.06)	.235 (5.97)	8-10	44	18	12	4	2	1
PTS1.90-750-321	250	1.90 (48.26)	.750 (19.05)	.335 (8.51)	.390 (9.91)	2-4	44	18	12	7	3	2
PTS1.90-1000-321	250	1.90 (48.26)	1.00 (25.4)	.375 (9.53)	.540 (13.72)	00-1	44	18	12	10	5	3

* Based on National Electric Code insulation measurement of THHN Wire.

Note: Labels are sorted in order by width, height, 3 digit material number (within part number), then die number (within part number).



DURASLEEVE™ WIRE MARKING SLEEVES

Vinyl Tag Material (B-7596)

Part Number	Inserts Per Roll	Insert Dimensions		Maximum Characters Per Line For Font:			Maximum Lines Of Text For Font:		
		A Inch (mm)	B Inch (mm)	2	7	10	2	7	10
** PTDSU-15-7596	2500	0.59 (15.00)	0.17 (4.20)	14	0	0	1	0	0
** PTDSU-15-7596-YL	2500	0.59 (15.00)	0.17 (4.20)	14	0	0	1	0	0
** PTDSU-30-7596	2500	1.18 (30.00)	0.16 (4.10)	27	0	0	1	0	0
** PTDSU-30-7596-YL	2500	1.18 (30.00)	0.16 (4.10)	27	0	0	1	0	0

** Available in Europe only.

DURASLEEVE™ WIRE MARKING CARRIERS

Part Number	Carrier Length Inch (mm)	Wire Diameter Inch (mm)	Carriers Per Box
DMC-1.5/2.5-15	0.60 (15.00)	0.06-0.10 (1.5-2.5)	1000
DMC-1.5/2.5-30	1.18 (30.00)		500
DMC-2/4-15	0.60 (15.00)	0.08-0.16 (2.0-4.0)	1000
DMC-2/4-30	1.18 (30.00)		500
DMC-4/7-15	0.60 (15.00)	0.16-0.28 (4.0-7.0)	1000
DMC-4/7-30	1.18 (30.00)		500
DMC-6/10-15	0.60 (15.00)	0.24-0.39 (6.0-10.0)	1000
DMC-6/10-30	1.18 (30.00)		500

ELECTRICAL APPLICATION LABELS

CONTINUED



ELECTRICAL COMPONENT MARKERS

Nylon Cloth (B-499), Polyethylene-Foam Laminate (B-7595), Polypropylene (B-412)

Part Number	Labels Per Roll	Label Dimensions		Maximum Characters Per Line For Font:			Maximum Lines Of Text For Font:		
		Inch (mm) A	Inch (mm) B	2	7	10	2	7	10
** PTL-47-499-YL	750	0.80 (20.00)	0.31 (8.00)	18	7	5	2	1	0
** PTL-67-499-YL	750	0.60 (15.00)	0.35 (9.00)	14	5	3	3	1	1
PTL-57-412	50ft (15m)	0.50 (12.70)	continuous	50	50	50	5	2	1
** PTLEP-01-7595	250	1.06 (27.00)	0.31 (8.00)	26	11	0	3	1	1
** PTLEP-02-7595	250	1.06 (27.00)	0.49 (12.50)	26	11	7	5	2	1
** PTLEP-03-7595	150	1.06 (27.00)	0.60 (15.00)	26	11	7	6	3	2
** PTLEP-04-7595	150	1.06 (27.00)	0.71 (18.00)	26	11	7	8	4	2
** BPTLEP-05-7595	750	1.18 (30.00)	1.57 (40.00)	29	12	8	5	2	1
** BPTLEP-05-7595-GN	750	1.18 (30.00)	1.57 (40.00)	29	12	8	5	2	1
** BPTLEP-05-7595-RD	750	1.18 (30.00)	1.57 (40.00)	29	12	8	5	2	1

BRADY TAGS® PRINTABLE TAGS

Polyethylene (B-109)

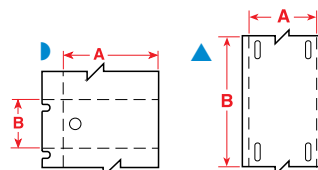
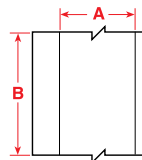


Diagram	Part Number	Tags Per Roll	Tag Dimensions		Maximum Characters Per Line For Font:			Maximum Lines Of Text For Font:			Applications/Description
			Inch (mm) A	Inch (mm) B	2	7	10	2	7	10	
▲	PTL-12-109	100	0.75 (19.05)	3.00 (76.20)	45	19	12	6	3	2	Product ID for harsh environments/tear resistant
▲	BPTL-12-109	1000	0.75 (19.05)	3.00 (76.20)	45	19	12	6	3	2	Product ID for harsh environments/tear resistant
▶	PTL-36-109	250	1.75 (44.45)	1.125 (28.57)	34	14	9	12	6	4	Product ID for harsh environments/tear resistant
▲	** PTL-60-109	100	0.47 (12.00)	1.97 (50.00)	41	17	11	5	2	1	Product ID for harsh environments/tear resistant

TERMINAL BLOCK MARKERS

Repositional Vinyl Cloth (B-400), Clear Polyester (**B-7551)



Part Number	Roll Length	Label Dimensions		Maximum Characters Per Line For Font:			Maximum Lines Of Text For Font:		
		Inch (mm) A	Inch (mm) B	2	7	10	2	7	10
** PTLTB-8-7551	50ft (15m)	.318 (8.00)	continuous	7	3	2	—	—	N/A
PTLTB-400-240	30ft (9m)	.240 (6.09)	continuous	5	2	1	—	—	N/A
BPTLTB-400-240	300ft (90m)	.240 (6.09)	continuous	5	2	1	—	—	N/A
PTLTB-400-318	30ft (9m)	.318 (8.07)	continuous	7	3	2	—	—	N/A
BPTLTB-400-318	300ft (90m)	.318 (8.07)	continuous	7	3	2	—	—	N/A
PTLTB-400-375	30ft (9m)	.375 (9.52)	continuous	8	3	2	—	—	N/A
BPTLTB-400-375	300ft (90m)	.375 (9.52)	continuous	8	3	2	—	—	N/A

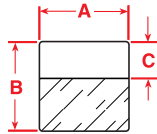
** Available in Europe only.

DATA COMMUNICATIONS EQUIPMENT AND CABLING LABELS

VOICE AND DATA CABLING LABELS

All *B-427 parts listed in Voice and Data Cabling section are available in the following colors:

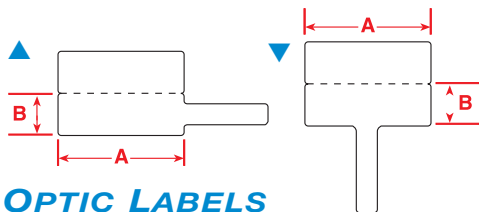
- YL = Yellow (For auxiliary, maintenance, alarms, security, etc.)
 - GY = Gray (For backbone cable between intermediate cross-connect and a telecommunications closet)
 - OR = Orange (Central office termination)
 - PL = Purple (Major switching and data equipment terminations)
 - GN = Green (Network connections)
 - BL = Blue (For horizontal cable terminations)
 - BR = Brown (For campus backbone cable terminations)
 - RD = Red (For all key telephone equipment terminations)
- * Standard product, contact your distributor or customer service representative for ordering information



Self-Laminating Vinyl (B-427), Low Smoke Self-Laminating Tedlar® (B-642), Polyolefin (**B-425)

Part Number	Labels Per Roll	Label Dimension			Application	Maximum Characters Per Line For Font:			Maximum Lines of Text For Font:		
		A Inches (mm)	B Inches (mm)	C Inches (mm)		2	7	10	2	7	10
PTL-29-427	500	0.50 (12.70)	1.50 (38.10)	0.50 (12.70)	CAT-5, 4 pair UTP Copper	11	5	3	5	2	1
BPTL-29-427	5000	0.50 (12.70)	1.50 (38.10)	0.50 (12.70)	CAT-5, 4 pair UTP Copper	11	5	3	5	2	1
PTL-30-427	250	0.75 (19.05)	1.50 (38.10)	0.50 (12.70)	CAT-5, 4 pair UTP Copper	18	7	5	5	2	1
BPTL-30-427	2500	0.75 (19.05)	1.50 (38.10)	0.50 (12.70)	CAT-5, 4 pair UTP Copper	18	7	5	5	2	1
PTL-19-427	250	1.00 (25.40)	1.00 (25.40)	0.375 (9.52)	2 pair Fiber, Single/Multi-Mode	24	10	7	3	1	1
BPTL-19-427	2500	1.00 (25.40)	1.00 (25.40)	0.375 (9.52)	2 pair Fiber, Single/Multi-Mode	24	10	7	3	1	1
PTL-19-642	250	1.00 (25.40)	1.00 (25.40)	0.375 (9.52)	2 pair Fiber, Plenum Grade	24	10	7	3	1	1
PTL-31-427	250	1.00 (25.40)	1.50 (38.10)	0.50 (12.70)	CAT-5, 4 pair UTP Copper	24	10	7	5	2	1
BPTL-31-427	2500	1.00 (25.40)	1.50 (38.10)	0.50 (12.70)	CAT-5, 4 pair UTP Copper	24	10	7	5	2	1
PTL-31-642	250	1.00 (25.40)	1.50 (38.10)	0.50 (12.70)	CAT-5, Plenum Grade	24	10	7	5	2	1
PTL-21-427	100	1.00 (25.40)	2.50 (63.50)	0.75 (19.05)	25 pair Copper, 4-12 pair Fiber	24	10	7	8	4	2
BPTL-21-427	1000	1.00 (25.40)	2.50 (63.50)	0.75 (19.05)	25 pair Copper, 4-12 pair Fiber	24	10	7	8	4	2
PTL-21-642	100	1.00 (25.40)	2.50 (63.50)	0.75 (19.05)	25 pair Copper, Plenum Grade	24	10	7	8	4	2
PTL-23-427	100	1.00 (25.40)	4.00 (101.60)	1.00 (25.40)	50 pair Copper, 24 pair Fiber	24	10	7	10	5	3
BPTL-23-427	1000	1.00 (25.40)	4.00 (101.60)	1.00 (25.40)	50 pair Copper, 24 pair Fiber	24	10	7	10	5	3
PTL-33-427	100	1.50 (38.10)	4.00 (101.60)	1.00 (25.40)	50 pair Copper, 24 pair Fiber	37	15	10	10	5	3
BPTL-33-427	1000	1.50 (38.10)	4.00 (101.60)	1.00 (25.40)	50 pair Copper, 24 pair Fiber	37	15	10	10	5	3
PTL-34-427	50	1.50 (38.10)	6.00 (152.40)	1.50 (38.10)	100 pair Copper, 36 pair Fiber	37	15	10	16	8	5
BPTL-34-427	500	1.50 (38.10)	6.00 (152.40)	1.50 (38.10)	100 pair Copper, 36 pair Fiber	37	15	10	16	8	5
PTL-64-427	100	1.00 (25.40)	3.375 (85.73)	1.125 (28.58)	CAT-5, 4 pair UTP Copper	24	10	7	12	12	8
PTLFP-01-425	250	1.18 (30.00)	0.390 (10.00)		Pig-tail and Single Fiber ID	26	12	8	3	2	1
PTLFT-01-425	250	1.18 (30.00)	0.390 (10.00)		Pig-tail and Single Fiber ID	26	12	8	3	2	1

Tedlar® is a registered trademark of DuPont.



FIBER OPTIC LABELS (B-425), FLAG

Polyolefin (B-425)



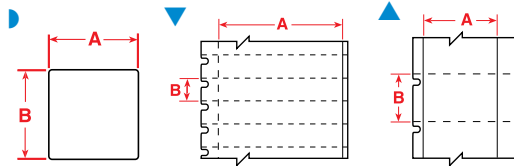
Diagram	Part Number	Labels Per Roll	Label Dimensions		Applications	Maximum Characters Per Line For Font:			Maximum Lines of Text For Font:		
			A Inch (mm)	B Inch (mm)		2	7	10	2	7	10
▲	PTLFP-01-425	250	1.18 (30.00)	0.39 (10.00)	Pig-tail and single fiber ID	26	12	8	3	2	1
▼	PTLFT-01-425	250	1.18 (30.00)	0.39 (10.00)	Pig-tail and single fiber ID	26	12	8	3	2	1

DATA COMMUNICATIONS EQUIPMENT AND CABLING LABELS

CONTINUED

TLS2200 / TLS PC LINK DATA COMMUNICATIONS EQUIPMENT AND CABLING LABELS

WORKSTATION LABELS

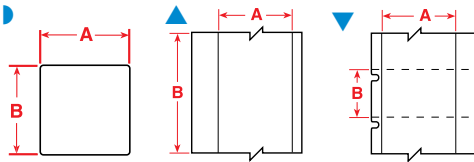


Polypropylene (B-412), Permanent Glossy Polyester (B-422), Clear Polyester (B-430), Vinyl (B-427)

Diagram	Part Number	Labels Per Roll	Label Dimensions		Applications	Maximum Characters Per Line For Font:			Maximum Lines Of Text For Font:		
			A Inch (mm)	B Inch (mm)		2	7	10	2	7	10
▶	PTL-7-422	500	0.50 (12.70)	0.50 (12.70)	1-6 Outlet Faceplates	11	5	3	5	2	1
▶	PTL-7-430	500	0.50 (12.70)	0.50 (12.70)	1-6 Outlet Faceplates	11	5	3	5	2	1
▶	PTL-16-422	500	1.00 (25.40)	0.375 (9.52)	1-4 Outlet Faceplates	24	10	7	3	1	1
▶	PTL-16-430	500	1.00 (25.40)	0.375 (9.52)	1-4 Outlet Faceplates	24	10	7	3	1	1
▶	PTL-17-422	500	1.00 (25.40)	0.50 (12.70)	1-4 Outlet Faceplates	24	10	7	5	2	1
▶	PTL-17-430	500	1.00 (25.40)	0.50 (12.70)	1-4 Outlet Faceplates	24	10	7	5	2	1
▶	PTL-29-422	500	1.50 (38.10)	0.50 (12.70)	1-2 Outlet Faceplates	37	15	10	5	2	1
▶	PTL-29-430	500	1.50 (38.10)	0.50 (12.70)	1-2 Outlet Faceplates	37	15	10	5	2	1
▲	PTL-39-422	750	0.375 (9.52)	0.60 (15.24)	1-2 Outlet Faceplates	8	3	2	6	3	2
▲	PTL-39-430	750	0.375 (9.52)	0.60 (15.24)	1-6 Outlet Faceplates	8	3	2	6	3	2
▼	PTL-40-412	750	1.938 (49.23)	0.375 (9.52)	Faceplates with DESI-STRIP	40	17	11	3	1	1
▼	BPTL-40-412	5000	1.938 (49.23)	0.375 (9.52)	Faceplates with DESI-STRIP	40	17	11	3	1	1
▶	PTL-44-422	500	0.50 (12.70)	0.375 (9.52)	1-6 Outlet Faceplates	11	5	3	3	1	1
▶	PTL-44-430	500	0.50 (12.70)	0.375 (9.52)	1-6 Outlet Faceplates	11	5	3	3	1	1
▶	PTL-45-422	500	1.50 (38.10)	0.375 (9.52)	1-2 Outlet Faceplates	37	15	10	3	1	1
▶	PTL-45-430	500	1.50 (38.10)	0.375 (9.52)	1-2 Outlet Faceplates	37	15	10	3	1	1
▼ **	PTL-48-412	500	1.57 (40.00)	0.35 (9.00)	BTR Faceplates	35	15	10	2	1	1
▶	PTL-55-412	50ft (15m)	0.23 (5.84)	continuous	Patch Panel	50	50	0	1	1	0
▶	PTL-56-412	50ft (15m)	0.38 (9.53)	continuous	Patch Panel	50	50	50	3	1	1
▶	PTL-57-412	50ft (15m)	0.50 (12.70)	continuous	Patch Panel	50	50	50	5	2	1
▶	PTL-58-412	50ft (15m)	0.54 (13.59)	continuous	Patch Panel	50	50	50	5	2	1
▶	PTL-59-412	50ft (15m)	0.79 (19.94)	continuous	Patch Panel	50	50	50	8	4	2

** Available in Europe only.

PATCH PANEL IDENTIFICATION



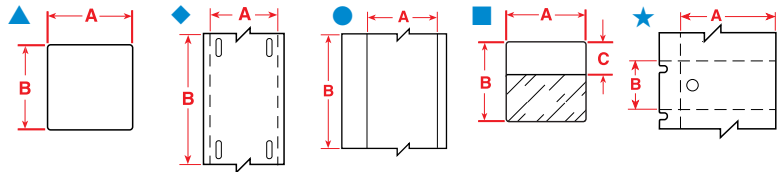
Polypropylene (B-412), Permanent Glossy Polyester (B-422), Clear Polyester (B-430), Vinyl (B-439, **B-7576), Clear Polyester (**B-7551)

Diagram	Part Number	Labels Per Roll	Label Dimensions		Applications	Maximum Characters Per Line For Font:			Maximum Lines Of Text For Font:		
			A Inch (mm)	B Inch (mm)		2	7	10	2	7	10
▶	PTL-7-422	500	0.50 (12.70)	0.50 (12.70)	Patch Panel - Label Each Port	11	5	3	5	2	1
▶	PTL-7-430	500	0.50 (12.70)	0.50 (12.70)	Patch Panel - Label Each Port	11	5	3	5	2	1
▲	PTL-8-422	50ft (15m)	0.50 (12.70)	continuous	Outlet, Patch Panel, Cont. Tape - Cut to Size	50	50	50	5	2	1
▲	PTL-8-430	50ft (15m)	0.50 (12.70)	continuous	Outlet, Patch Panel, Cont. Tape - Cut to Size	50	50	50	5	2	1
▲	PTL-8-439	50ft (15m)	0.50 (12.70)	continuous	Outlet, Patch Panel, Cont. Tape - Cut to Size	50	50	50	5	2	1
▲	PTL-8-439-BK	50ft (15m)	0.50 (12.70)	continuous	Outlet, Patch Panel, Cont. Tape - Cut to Size	50	50	50	5	2	1
▲	PTL-8-439-BL	50ft (15m)	0.50 (12.70)	continuous	Outlet, Patch Panel, Cont. Tape - Cut to Size	50	50	50	5	2	1
▲	PTL-8-439-GN	50ft (15m)	0.50 (12.70)	continuous	Outlet, Patch Panel, Cont. Tape - Cut to Size	50	50	50	5	2	1
▲	PTL-8-439OR	50ft (15m)	0.50 (12.70)	continuous	Outlet, Patch Panel, Cont. Tape - Cut to Size	50	50	50	5	2	1
▲	PTL-8-439YL	50ft (15m)	0.50 (12.70)	continuous	Outlet, Patch Panel, Cont. Tape - Cut to Size	50	50	50	5	2	1
▲	PTL-8-439-RD	50ft (15m)	0.50 (12.70)	continuous	Outlet, Patch Panel, Cont. Tape - Cut to Size	50	50	50	5	2	1
▼	PTL-39-422	750	0.375 (9.52)	0.60 (15.24)	Patch Panel	8	3	2	6	3	2
▼	PTL-39-430	750	0.375 (9.52)	0.60 (15.24)	Patch Panel	8	3	2	6	3	2
▲	PTL-46-422	50ft (15m)	0.375 (9.52)	continuous	Outlet, Patch Panel, Cont. Tape - Cut to Size	50	50	50	3	1	1
▲	PTL-46-430	50ft (15m)	0.375 (9.52)	continuous	Outlet, Patch Panel, Cont. Tape - Cut to Size	50	50	50	3	1	1
▲	PTL-55-412	50ft (15m)	0.230 (5.84)	continuous	Patch Panel	50	50	50	—	NA	—
▲	PTL-56-412	50ft (15m)	0.375 (9.53)	continuous	Patch Panel	50	50	50	3	1	1
▲	PTL-57-412	50ft (15m)	0.500 (15.00)	continuous	Patch Panel	50	50	50	5	2	1
▲	PTL-58-412	50ft (15m)	0.535 (13.59)	continuous	Patch Panel	50	50	50	5	2	1
▲	PTL-59-412	50ft (15m)	0.785 (19.90)	continuous	Patch Panel	50	50	50	5	3	2
▲	**PTLTB-8-422	50ft (15m)	0.318 (8.00)	continuous	Patch Panel - Cut to Size	7	3	2	2	1	0
▲	**PTLTB-8-7551	50ft (15m)	0.318 (8.00)	continuous	Patch Panel - Cut to Size	7	3	2	2	1	0

** Available in Europe only.

DATA COMMUNICATIONS EQUIPMENT AND CABLING LABELS

CONTINUED



PUBLIC NETWORKS IDENTIFICATION

Polyethylene (B-109), Permanent Glossy Polyester (B-422), Self-Laminating Vinyl (B-427), Clear Glossy Polyester (B-432) Ultra Aggressive Glossy Polyester (B-483),

Diagram	Part Number	Labels Per Roll	Label Dimensions		Applications	Maximum Characters Per Line For Font:			Maximum Lines Of Text For Font:		
			A Inch (mm)	B Inch (mm)		2	7	10	2	7	10
▲	PTL-7-422	500	0.50 (12.70)	0.50 (12.70)	145C and 145P tags	11	5	3	5	2	1
◆	PTL-12-109	100	0.75 (19.05)	3.00 (76.20)	Non-adhesive cable tags	45	19	12	6	3	2
▲	PTL-17-483	500	1.00 (25.40)	0.50 (12.70)	145P tags	24	10	7	5	2	1
■	PTL-19-427	250	1.00 (25.40)	1.00 (25.40)	Fiber/coax	24	10	7	3	1	1
▲	PTL-20-483	100	2.00 (50.80)	1.00 (25.40)	Shelf/general ID	46	19	13	10	5	3
■	PTL-21-427	100	1.00 (25.40)	2.50 (63.50)	Fiber/coax	24	10	7	8	4	2
■	PTL-23-427	100	1.00 (25.40)	4.00 (101.60)	Backbone	24	10	7	10	5	3
▲	PTL-30-483	250	1.50 (38.10)	0.75 (19.05)	Shelf/general ID	37	15	10	8	4	2
■	PTL-31-427	2500	1.00 (25.40)	1.50 (38.10)	Fiber/coax	24	10	7	5	2	1
▲	PTL-31-483	250	1.00 (25.40)	1.50 (38.10)	Shelf	37	15	10	10	5	3
▲	PTL-32-427	250	1.50 (38.10)	1.50 (38.10)	Fiber/coax	37	15	10	5	2	1
▲	PTL-32-483	250	1.50 (38.10)	1.50 (38.10)	Shelf/general ID	37	15	10	16	8	5
■	PTL-33-427	100	1.50 (38.10)	4.00 (101.60)	Backbone	37	15	10	10	5	3
■	PTL-34-427	50	1.50 (38.10)	6.00 (152.40)	Backbone	37	15	10	16	8	5
★	PTL-36-109	250	1.70 (44.45)	1.125 (28.57)	Non-adhesive cable tags	34	14	9	12	6	4
▲	PTL-37-483	100	3.00 (76.20)	1.90 (48.26)	Rack/end aisle	50	31	21	20	10	6
▲	PTL-38-483	100	4.00 (101.60)	1.90 (48.26)	Rack/end aisle	50	41	30	20	10	6
●	PTL-42-432*	50ft (15m)	1.00 (25.40)	continuous	General ID	50	50	50	5	4	3
●	PTL-43-483	50ft (15m)	1.90 (48.26)	continuous	General ID	50	50	50	10	6	4
▲	PTL-61-483	100	0.50 (12.70)	2.00 (50.80)	Shelf	50	21	15	5	2	1
▲	PTL-62-483	50	0.75 (19.05)	4.00 (101.60)	Rack/end aisle	50	42	27	8	4	2
▲	PTL-63-483	50	0.75 (19.05)	8.00 (203.20)	DWDM/site names	50	50	50	7	4	2
■	PTL-64-427	100	1.00 (25.40)	3.375 (85.73)	Fiber/coax	24	10	7	23	22	15
▲	PTL-65-483	250	1.375 (34.93)	1.00 (25.40)	Shelf	35	14	9	10	5	3

All B-427 labels are available in Yellow, Gray, Orange, Purple, Green, Blue, Brown and Red.

* B-432 material available in additional label sizes. Red, White and Blue ribbon colors also available.

GENERAL COMMUNICATION IDENTIFICATION

Permanent Glossy Polyester (B-422), Clear Polyester (B-430), Vinyl (B-439)

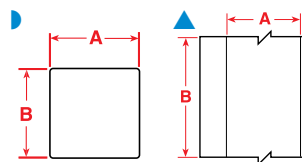


Diagram	Part Number	Labels Per Roll	Label Dimensions		Applications	Maximum Characters Per Line For Font:			Maximum Lines Of Text For Font:		
			A Inch (mm)	B Inch (mm)		2	7	10	2	7	10
▲	PTL-8-422	50ft (15m)	0.50 (12.70)	continuous	Outlet, Patch Panel, Cont. Tape - Cut to Size	50	50	50	5	2	1
▲	PTL-8-430	50ft (15m)	0.50 (12.70)	continuous	Outlet, Patch Panel, Cont. Tape - Cut to Size	50	50	50	5	2	1
▲	PTL-8-439	50ft (15m)	0.50 (12.70)	continuous	Outlet, Patch Panel, Cont. Tape - Cut to Size	50	50	50	5	2	1
▲	PTL-8-439-BK	50ft (15m)	0.50 (12.70)	continuous	Outlet, Patch Panel, Cont. Tape - Cut to Size	50	50	50	5	2	1
▲	PTL-8-439-BL	50ft (15m)	0.50 (12.70)	continuous	Outlet, Patch Panel, Cont. Tape - Cut to Size	50	50	50	5	2	1
▲	PTL-8-439-GN	50ft (15m)	0.50 (12.70)	continuous	Outlet, Patch Panel, Cont. Tape - Cut to Size	50	50	50	5	2	1
▲	PTL-8-439OR	50ft (15m)	0.50 (12.70)	continuous	Outlet, Patch Panel, Cont. Tape - Cut to Size	50	50	50	5	2	1
▲	PTL-8-439YL	50ft (15m)	0.50 (12.70)	continuous	Outlet, Patch Panel, Cont. Tape - Cut to Size	50	50	50	5	2	1
▲	PTL-8-439-RD	50ft (15m)	0.50 (12.70)	continuous	Outlet, Patch Panel, Cont. Tape - Cut to Size	50	50	50	5	2	1
▶	PTL-20-422	100	2.00 (50.80)	1.00 (25.40)	General Identification	46	19	13	10	5	3
▶	BPTL-20-422	1000	2.00 (50.80)	1.00 (25.40)	General Identification	46	19	13	10	5	3
▶	PTL-28-430	750	1.50 (38.10)	.25 (6.35)	General Identification	37	15	0	2	1	0
▲	PTL-42-430	50ft (15m)	1.00 (25.40)	continuous	General Identification	50	50	50	5	4	3
▲	PTL-42-439	50ft (15m)	1.00 (25.40)	continuous	General Identification	50	50	50	5	4	3
▲	PTL-42-439OR	50ft (15m)	1.00 (25.40)	continuous	General Identification	50	50	50	5	4	3
▲	PTL-42-439YL	50ft (15m)	1.00 (25.40)	continuous	General Identification	50	50	50	5	4	3
▲	PTL-42-439RD	50ft (15m)	1.00 (25.40)	continuous	General Identification	50	50	50	5	4	3
▲	PTL-42-483	50ft (15m)	1.00 (25.40)	continuous	General Identification	50	50	50	5	4	3
▲	PTL-42-422	50ft (15m)	1.00 (25.40)	continuous	General Identification	50	50	50	5	4	3

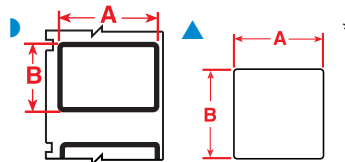
INDUSTRIAL APPLICATION LABELS

INDUSTRIAL LABEL SELECTION CHART BASED ON TYPE OF SURFACE

Part Number	SMOOTH (Examples: Uncoated Metal, Plastic, Glass)	TEXTURED/ROUGH (Examples: Textured ABS, Cast Metal, Polycarbonate)	HIGHLY TEXTURED/LOW SURFACE ENERGY (Examples: Powder Coated, Low Surface Energy ABS, Polypropylene)
PERMANENT B-423* B-424 B-428*• B-430 B-459* B-473* B-488 B-7546* B-7576*	◆ YES	NO	NO
AGGRESSIVE B-351 B-352 B-422* B-435*• B-439 B-427	● YES	● YES	NO
ULTRA-AGGRESSIVE B-483* B-486* B-489 B-499	■ YES	■ YES	■ YES

* Material UL recognized/GSA approved

• Material AGA approved



RATING/NAMEPLATE LABELS

Permanent Glossy Polyester (B-422, B-423, B-459), General Purpose White Paper (B-424), Flexible Vinyl (B-427), Permanent Metallized Polyester (B-428, B-435), Ultra-Aggressive Glossy Polyester (B-483), Ultra-Aggressive Matte Metallized Polyester (B-486), Matte Polyester (B-488), Ultra-Aggressive Matte Polyester (B-489), Nylon Cloth (B-499)

Surface Suitability	Diagram	Part Number	Labels Per Roll	Label Dimensions		Applications/Description	Maximum Characters Per Line For Font:			Maximum Lines Of Text For Font:		
				A Inch (mm)	B Inch (mm)		2	7	10	2	7	10
●	▲	PTL-8-428	50ft (15m)	0.50 (12.70)	continuous	Small ICs: silver finish	50	50	50	5	2	1
■	▲	PTL-16-435	500	1.00 (25.40)	0.375 (9.52)	Asset ID for textured surfaces	24	10	7	3	1	1
■	▲	PTL-16-483	500	1.00 (25.40)	0.375 (9.52)	Asset ID for textured surfaces	24	10	7	3	1	1
■	▲	PTL-16-486	500	1.00 (25.40)	0.375 (9.52)	Asset ID for oily, greasy, and textured surfaces	24	10	7	3	1	1
■	▲	PTL-16-489	500	1.00 (25.40)	0.375 (9.52)	Asset ID for oily, greasy, and textured surfaces	24	10	7	3	1	1
●	▲	PTL-17-435	500	1.00 (25.40)	0.50 (12.70)	General-purpose	24	10	7	5	2	1
●	▲	PTL-17-428	500	1.00 (25.40)	0.50 (12.70)	General-purpose	24	10	7	5	2	1
●	▲	BPTL-17-428	5000	1.00 (25.40)	0.50 (12.70)	over-laminated identification	24	10	7	5	2	1
■	▲	PTL-17-483	500	1.00 (25.40)	0.50 (12.70)	Asset ID for textured surfaces	24	10	7	5	2	1
■	▲	PTL-17-486	500	1.00 (25.40)	0.50 (12.70)	Asset ID for oily, greasy, and textured surfaces	24	10	7	5	2	1
■	▲	PTL-17-489	500	1.00 (25.40)	0.50 (12.70)	Asset ID for oily, greasy, and textured surfaces	24	10	7	5	2	1
●	▲	PTL-19-422	250	1.00 (25.40)	1.00 (25.40)	Asset ID for textured surfaces	24	10	7	10	5	3
◆	▲	PTL-19-423	250	1.00 (25.40)	1.00 (25.40)	Rating plate	24	10	7	10	5	3
◆	▲	PTL-19-435	250	1.00 (25.40)	1.00 (25.40)	Rating plate	24	10	7	10	5	3
◆	▲	BPTL-19-423	2500	1.00 (25.40)	1.00 (25.40)	Rating plate	24	10	7	10	5	3
■	▲	PTL-19-483	250	1.00 (25.40)	1.00 (25.40)	Asset ID for textured surfaces	24	10	7	10	5	3
■	▲	PTL-19-486	250	1.00 (25.40)	1.00 (25.40)	Asset ID for oily, greasy, and textured surfaces	24	10	7	10	5	3
■	▲	PTL-19-489	250	1.00 (25.40)	1.00 (25.40)	Asset ID for oily, greasy, and textured surfaces	24	10	7	10	5	3
◆	▲	PTL-20-424	100	2.00 (50.80)	1.00 (25.40)	General identification and Asset ID	46	19	13	10	5	3
◆	▲	BPTL-20-424	100	2.00 (50.80)	1.00 (25.40)	General identification and Asset ID	46	19	13	10	5	3
●	▲	PTL-20-435	100	2.00 (50.80)	1.00 (25.40)	Asset ID, silver finish	46	19	13	10	5	3
●	▲	PTL-20-428	100	2.00 (50.80)	1.00 (25.40)	Asset ID, silver finish	46	19	13	10	5	3
●	▲	BPTL-20-428	1000	2.00 (50.80)	1.00 (25.40)	Asset ID, silver finish	46	19	13	10	5	3
■	▲	PTL-20-483	100	2.00 (50.80)	1.00 (25.40)	Asset ID for textured surfaces	46	19	13	10	5	3
■	▲	PTL-20-486	100	2.00 (50.80)	1.00 (25.40)	Asset ID for oily, greasy, and textured surfaces	46	19	13	10	5	3
■	▲	PTL-20-489	100	2.00 (50.80)	1.00 (25.40)	Asset ID for oily, greasy, and textured surfaces	46	19	13	10	5	3
●	▲	PTL-22-422	100	3.00 (46.20)	1.00 (25.40)	General identification	50	31	21	10	5	3
◆	▲	PTL-22-423	100	3.00 (46.20)	1.00 (25.40)	General identification	50	31	21	10	5	3
◆	▲	PTL-22-424	100	3.00 (46.20)	1.00 (25.40)	General identification	50	31	21	10	5	3
●	▲	PTL-22-428	100	3.00 (46.20)	1.00 (25.40)	Rating plate	50	31	21	10	5	3
◆	▲	PTL-22-459	100	3.00 (46.20)	1.00 (25.40)	General identification	50	31	21	10	5	3
●	▲	PTL-23-422	100	4.00 (101.60)	1.00 (25.40)	General identification	50	42	28	10	5	3
◆	▲	PTL-23-423	100	4.00 (101.60)	1.00 (25.40)	General identification	50	42	28	10	5	3
◆	▲	PTL-23-499	100	4.00 (101.60)	1.00 (25.40)	General identification	50	42	28	10	5	3
◆	▶	PTL-24-423-BK	500	1.13 (28.70)	0.50 (12.70)	1/16" (1.6mm) Black-bordered component identification	24	10	7	3	1	1

* Any label two inches or larger is rotated on liner.

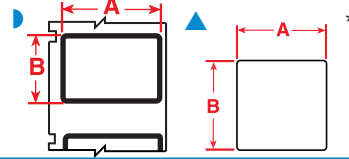
◆ Material suitable for smooth surfaces.

● Material suitable for smooth and textured surfaces.

■ Material suitable for smooth, textured and highly textured surfaces.

INDUSTRIAL APPLICATION LABELS

CONTINUED



RATING/NAMEPLATE LABELS

CONTINUED

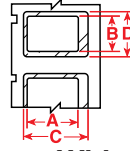
Surface Suitability	Diagram	Part Number	Labels Per Roll	Label Dimensions		Applications/Description	Maximum Characters Per Line For Font:			Maximum Lines Of Text For Font:		
				A Inch (mm)	B Inch (mm)		2	7	10	2	7	10
●	▶	PTL-24-428-BK	500	1.13 (28.70)	0.50 (12.70)	1/16" (1.6mm) Black-bordered component identification	24	10	7	3	1	1
●	▶	PTL-24-435-BK	500	1.13 (28.70)	0.50 (12.70)	1/16" (1.6mm) Black-bordered component identification	24	10	7	3	1	1
■	▶	PTL-24-483-BK	500	1.13 (28.70)	0.50 (12.70)	1/16" (1.6mm) Black-bordered component identification	24	10	7	3	1	1
■	▶	PTL-24-486-BK	500	1.13 (28.70)	0.50 (12.70)	1/16" (1.6mm) Black-bordered component identification	24	10	7	3	1	1
◆	▲	PTL-26-423	100	2.75 (69.85)	1.25 (31.75)	General identification and Asset ID	50	29	19	13	6	4
●	▲	PTL-26-428	100	2.75 (69.85)	1.25 (31.75)	General identification and Asset ID	50	29	19	13	6	4
●	▲	PTL-29-428	500	1.50 (38.10)	0.50 (12.70)	Faceplates, panels, equipment, silver finish	37	15	10	5	2	1
■	▲	PTL-29-435	500	1.50 (38.10)	0.50 (12.70)	Asset ID for textured surfaces	37	15	10	5	2	1
■	▲	PTL-29-483	500	1.50 (38.10)	0.50 (12.70)	Asset ID for textured surfaces	37	15	10	5	2	1
■	▲	PTL-29-486	500	1.50 (38.10)	0.50 (12.70)	Asset ID for oily, greasy, and textured surfaces	37	15	10	5	2	1
■	▲	PTL-29-489	500	1.50 (38.10)	0.50 (12.70)	Asset ID for oily, greasy, and textured surfaces	37	15	10	5	2	1
●	▲	PTL-30-422	250	1.50 (38.10)	0.75 (19.05)	Asset ID for textured surfaces	37	15	10	8	4	2
●	▲	PTL-30-427AW	250	1.50 (38.10)	0.75 (19.05)	Asset ID for textured surfaces	37	15	10	8	4	2
●	▲	PTL-30-435	250	1.50 (38.10)	0.75 (19.05)	Asset ID for textured surfaces	37	15	10	8	4	2
■	▲	PTL-30-483	250	1.50 (38.10)	0.75 (19.05)	Asset ID for oily, greasy, and textured surfaces	37	15	10	8	4	2
■	▲	PTL-30-486	250	1.50 (38.10)	0.75 (19.05)	Asset ID for oily, greasy, and textured surfaces	37	15	10	8	4	2
■	▲	PTL-30-489	250	1.50 (38.10)	0.75 (19.05)	Asset ID for oily, greasy, and textured surfaces	37	15	10	8	4	2
■	▲	PTL-30-499	250	1.50 (38.10)	0.75 (19.05)	Asset ID for oily, greasy, and textured surfaces	37	15	10	8	4	2
◆	▲	PTL-31-423	250	1.50 (38.10)	1.00 (25.40)	General identification	37	15	10	10	5	3
◆	▲	PTL-31-435	250	1.50 (38.10)	1.00 (25.40)	General identification	37	15	10	10	5	3
■	▲	PTL-31-483	250	1.50 (38.10)	1.00 (25.40)	Asset ID for textured surfaces	37	15	10	10	5	3
■	▲	PTL-31-486	250	1.50 (38.10)	1.00 (25.40)	Asset ID for oily, greasy, and textured surfaces	37	15	10	10	5	3
■	▲	PTL-31-489	250	1.50 (38.10)	1.00 (25.40)	Asset ID for oily, greasy, and textured surfaces	37	15	10	10	5	3
◆	▲	PTL-32-423	250	1.50 (38.10)	1.50 (38.10)	General identification	37	15	10	16	8	5
◆	▲	PTL-32-435	250	1.50 (38.10)	1.50 (38.10)	General identification	37	15	10	16	8	5
■	▲	PTL-32-483	250	1.50 (38.10)	1.50 (38.10)	Asset ID for textured surfaces	37	15	10	16	8	5
■	▲	PTL-32-486	250	1.50 (38.10)	1.50 (38.10)	Asset ID for oily, greasy, and textured surfaces	37	15	10	16	8	5
■	▲	PTL-32-489	250	1.50 (38.10)	1.50 (38.10)	Asset ID for oily, greasy, and textured surfaces	37	15	10	16	8	5
●	▲	PTL-37-422	100	3.00 (76.20)	1.90 (48.26)	Asset ID for textured surfaces	50	31	21	20	10	6
◆	▲	PTL-37-423	100	3.00 (76.20)	1.90 (48.26)	General identification and Asset ID	50	31	21	20	10	6
◆	▲	PTL-37-424	100	3.00 (76.20)	1.90 (48.26)	General identification and Asset ID	50	31	21	20	10	6
●	▲	PTL-37-428	100	3.00 (76.20)	1.90 (48.26)	Asset ID, silver finish	50	31	21	20	10	6
●	▲	PTL-37-435	100	3.00 (76.20)	1.90 (48.26)	Asset ID, silver finish	50	31	21	20	10	6
■	▲	PTL-37-483	100	3.00 (76.20)	1.90 (48.26)	Asset ID for oily, greasy, and textured surfaces	50	31	21	20	10	6
■	▲	PTL-37-486	100	3.00 (76.20)	1.90 (48.26)	Asset ID for oily, greasy, and textured surfaces	50	31	21	20	10	6
■	▲	PTL-37-489	100	3.00 (76.20)	1.90 (48.26)	Asset ID for oily, greasy, and textured surfaces	50	31	21	20	10	6
●	▲	PTL-38-422	100	4.00 (101.6)	1.90 (48.26)	Asset ID for textured surfaces	50	41	30	20	10	6
◆	▲	PTL-38-423	100	4.00 (101.6)	1.90 (48.26)	General identification and Asset ID	50	41	30	20	10	6
◆	▲	PTL-38-424	100	4.00 (101.6)	1.90 (48.26)	General identification and Asset ID	50	41	30	20	10	6
●	▲	PTL-38-428	100	4.00 (101.6)	1.90 (48.26)	Asset ID, silver finish	50	41	30	20	10	6
●	▲	PTL-38-435	100	4.00 (101.6)	1.90 (48.26)	Asset ID, silver finish	50	41	30	20	10	6
■	▲	PTL-38-483	100	4.00 (101.6)	1.90 (48.26)	Asset ID for oily, greasy, and textured surfaces	50	41	30	20	10	6
■	▲	PTL-38-486	100	4.00 (101.6)	1.90 (48.26)	Asset ID for oily, greasy, and textured surfaces	50	41	30	20	10	6
■	▲	PTL-38-489	100	4.00 (101.6)	1.90 (48.26)	Asset ID for oily, greasy, and textured surfaces	50	41	30	20	10	6
●	▲	PTL-78-427AW	250	1.90 (48.26)	1.00 (25.40)	Asset ID for curved surfaces	50	41	30	20	10	6
■	▲	PTL-78-499	250	1.90 (48.26)	1.00 (25.40)	General ID	50	41	30	20	10	6
◆	▲	PTL-80-424	250	0.75 (19.05)	0.90 (22.86)	General ID	50	41	30	20	10	6
◆	▲	PTL-80-488	250	0.75 (19.05)	0.90 (22.86)	Asset ID with print durability	50	41	30	20	10	6
◆	▲	PTL-81-488	750	1.90 (48.26)	0.25 (6.35)	Asset ID with print durability	50	41	30	20	10	6
■	▲	PTL-81-499	750	1.90 (48.26)	0.25 (6.35)	General ID	50	41	30	20	10	6
■	▲	PTL-84-499	500	0.90 (22.86)	0.50 (12.70)	General ID	50	41	30	20	10	6
◆	▲	PTL-97-488	250	0.90 (22.86)	0.90 (22.86)	Asset ID with print durability	50	41	30	20	10	6

* Any label two inches or larger is rotated on liner.

- ◆ Material suitable for smooth surfaces.
- Material suitable for smooth and textured surfaces.
- Material suitable for smooth, textured and highly textured surfaces.

INDUSTRIAL APPLICATION LABELS

CONTINUED

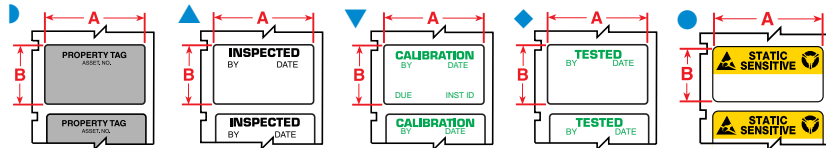


PERMASHIELD LABELS

Permanent Glossy Polyester (B-422), General Purpose White Paper (B-424), Permanent Metalized Polyester (B-428)

Surface Suitability	Part Number	Labels Per Roll	Label Dimensions		Overlamine Dimensions		Maximum Characters Per Line For Font:			Maximum Lines Of Text For Font:		
			A Inch (mm)	B Inch (mm)	C Inch (mm)	D Inch (mm)	2	7	10	2	7	10
●	PTPSL-17-422	500	1.00 (25.40)	0.50 (12.70)	1.25 (31.75)	0.75 (19.05)	24	10	7	5	2	1
◆	PTPSL-17-424	500	1.00 (25.40)	0.50 (12.70)	1.25 (31.75)	0.75 (19.05)	24	10	7	5	2	1
●	PTPSL-17-428	500	1.00 (25.40)	0.50 (12.70)	1.25 (31.75)	0.75 (19.05)	24	10	7	5	2	1
●	PTPSL-20-422	100	2.00 (50.80)	1.00 (25.40)	2.25 (57.15)	1.25 (31.75)	46	19	13	10	5	3
◆	PTPSL-20-424	100	2.00 (50.80)	1.00 (25.40)	2.25 (57.15)	1.25 (31.75)	46	19	13	10	5	3
●	PTPSL-20-428	100	2.00 (50.80)	1.00 (25.40)	2.25 (57.15)	1.25 (31.75)	46	19	13	10	5	3
●	PTPSL-26-422	100	1.25 (31.75)	2.75 (69.85)	1.50 (38.10)	3.00 (76.20)	50	29	19	13	6	4
●	PTPSL-26-428	100	1.25 (31.75)	2.75 (69.85)	1.50 (38.10)	3.00 (76.20)	50	29	19	13	6	4
●	PTPSL-50-422	100	1.65 (41.91)	3.00 (76.20)	1.90 (48.26)	3.25 (82.55)	75	31	21	18	9	6
●	PTPSL-50-428	100	1.65 (41.91)	3.00 (76.20)	1.90 (48.26)	3.25 (82.55)	75	31	21	18	9	6

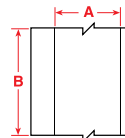
PRE-PRINTED LABELS



Permanent Glossy Polyester (B-422, B-423), Permanent Metallized Polyester (B-428), Permanent Silver Polyester (B-435), Static Dissipative Polyester (B-473)

Surface Suitability	Diagram	Part Number	Labels Per Roll	Label Dimensions		Description
				A Inch (mm)	B Inch (mm)	
◆	●	PTLSL-17-473	500	1.00 (25.40)	0.50 (12.70)	Static Sensitive
◆	▼	PTL-30-423-CALI	250	1.50 (38.10)	0.75 (19.05)	Calibration
●	▼	PTL-30-428-CALI	250	1.50 (38.10)	0.75 (19.05)	Calibration
◆	◆	PTL-30-423-TEST	250	1.50 (38.10)	0.75 (19.05)	Tested
●	◆	PTL-30-428-TEST	250	1.50 (38.10)	0.75 (19.05)	Tested
◆	▲	PTL-30-423-INSP	250	1.50 (38.10)	0.75 (19.05)	Inspected By
●	▲	PTL-30-428-INSP	250	1.50 (38.10)	0.75 (19.05)	Inspected By
●	▶	PTL-35-422-PROP	250	1.63 (41.40)	0.75 (19.05)	Property Tag
◆	▶	PTL-35-423-PROP	250	1.63 (41.40)	0.75 (19.05)	Property Tag
●	▶	PTL-35-428-PROP	250	1.63 (41.40)	0.75 (19.05)	Property Tag
◆	▶	PTL-35-435-PROP	250	1.63 (41.40)	0.75 (19.05)	Property Tag

GENERAL INDUSTRIAL LABELS



Permanent Glossy Polyester (B-422), Permanent Clear Polyester (B-430), Permanent Colored Vinyl (B-439), Ultra-Aggressive Glossy Polyester (B-483)

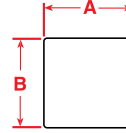
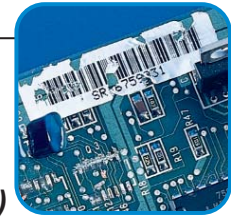


Surface Suitability	Part Number	Labels Per Row	Label Dimensions		Maximum Characters Per Line For Font:			Maximum Lines Of Text For Font:		
			A Inch (mm)	B Inch (mm)	7	10	14	7	10	14
●	PTL-42-422	50ft (15m)	1.00 (25.40)	continuous	50	50	50	5	3	2
◆	PTL-42-430	50ft (15m)	1.00 (25.40)	continuous	50	50	50	5	3	2
◆	PTL-42-439	50ft (15m)	1.00 (25.40)	continuous	50	50	50	5	3	2
◆	PTL-42-439-BK	50ft (15m)	1.00 (25.40)	continuous	50	50	50	5	3	2
◆	PTL-42-439-BL	50ft (15m)	1.00 (25.40)	continuous	50	50	50	5	3	2
◆	PTL-42-439-GN	50ft (15m)	1.00 (25.40)	continuous	50	50	50	5	3	2
◆	PTL-42-439OR	50ft (15m)	1.00 (25.40)	continuous	50	50	50	5	3	2
◆	PTL-42-439YL	50ft (15m)	1.00 (25.40)	continuous	50	50	50	5	3	2
◆	PTL-42-439RD	50ft (15m)	1.00 (25.40)	continuous	50	50	50	5	3	2
■	PTL-42-483	50ft (15m)	1.00 (25.40)	continuous	50	50	50	5	3	2
●	PTL-43-422	50ft (15m)	1.90 (48.26)	continuous	50	50	50	10	6	4
◆	PTL-43-430	50ft (15m)	1.90 (48.26)	continuous	50	50	50	10	6	4
◆	PTL-43-439	50ft (15m)	1.90 (48.26)	continuous	50	50	50	10	6	4
◆	PTL-43-439-BK	50ft (15m)	1.90 (48.26)	continuous	50	50	50	10	6	4
◆	PTL-43-439-BL	50ft (15m)	1.90 (48.26)	continuous	50	50	50	10	6	4
◆	PTL-43-439-GN	50ft (15m)	1.90 (48.26)	continuous	50	50	50	10	6	4
◆	PTL-43-439OR	50ft (15m)	1.90 (48.26)	continuous	50	50	50	10	6	4
◆	PTL-43-439YL	50ft (15m)	1.90 (48.26)	continuous	50	50	50	10	6	4
◆	PTL-43-439RD	50ft (15m)	1.90 (48.26)	continuous	50	50	50	10	6	4
■	PTL-43-483	50ft (15m)	1.90 (48.26)	continuous	50	50	50	10	6	4

- ◆ Material suitable for smooth surfaces.
- Material suitable for smooth and textured surfaces.
- Material suitable for smooth, textured and highly textured surfaces.

INDUSTRIAL APPLICATION LABELS

CONTINUED



TAMPER-EVIDENT AND TAMPER-RESISTANT LABELS

Tamper-Resistant White Vinyl (B-351), Tamper-Resistant Silver Vinyl (B-352)
 Tamper-Evident White Polyester (B-7546), Tamper-Evident Metallized Polyester (B-7576)

Surface Suitability	Part Number	Labels Per Roll	Label Dimensions		Maximum Characters Per Line For Font:			Maximum Lines Of Text For Font:		
			A Inch (mm)	B Inch (mm)	2	7	10	2	7	10
●	PTL-17-351	500	1.00 (25.40)	0.50 (12.70)	24	10	7	5	2	1
●	PTL-17-352	500	1.00 (25.40)	0.50 (12.70)	24	10	7	5	2	1
●	PTL-17-7546	500	1.00 (25.40)	0.50 (12.70)	24	10	7	5	2	1
●	PTL-17-7576	500	1.00 (25.40)	0.50 (12.70)	24	10	7	5	2	1
●	PTL-20-351	100	2.00 (50.80)	1.00 (25.40)	46	19	13	10	5	3
●	PTL-20-352	100	2.00 (50.80)	1.00 (25.40)	46	19	13	10	5	3
●	PTL-20-7546	100	2.00 (50.80)	1.00 (25.40)	46	19	13	10	5	3
●	PTL-20-7576	100	2.00 (50.80)	1.00 (25.40)	46	19	13	10	5	3
●	PTL-31-351	250	1.50 (38.10)	1.00 (25.40)	37	15	10	10	5	3
●	PTL-31-352	250	1.50 (38.10)	1.00 (25.40)	37	15	10	10	5	3
●	PTL-31-7546	250	1.50 (38.10)	1.00 (25.40)	37	15	10	10	5	3
●	PTL-31-7576	250	1.50 (38.10)	1.00 (25.40)	37	15	10	10	5	3
●	PTL-37-351	100	3.00 (76.20)	1.90 (48.26)	50	31	21	20	10	6
●	PTL-37-352	100	3.00 (76.20)	1.90 (48.26)	50	31	21	20	10	6
●	PTL-37-7546	100	3.00 (76.20)	1.90 (48.26)	50	31	21	20	10	6
●	PTL-37-7576	100	3.00 (76.20)	1.90 (48.26)	50	31	21	20	10	6

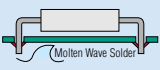
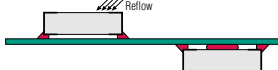
- ◆ Material suitable for smooth surfaces.
- Material suitable for smooth and textured surfaces.
- Material suitable for smooth, textured and highly textured surfaces.

CUSTOM LABEL OPTIONS

Custom sizes, colors and partially preprinted labels are also available. Contact your Brady Identification Solutions distributor or Customer Service representative for ordering information.

ELECTRONIC APPLICATION LABELS

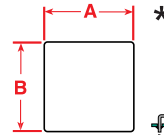
THERMAL TRANSFER PRINTABLE PRODUCTS CIRCUIT BOARD PROCESS CHART

			After Process
	Through Hole Technology Top Bottom	Surface Mount Technology (SMT) Top or Bottom	After Process
B-426, B-457, B-477, B-478, B-479	● Yes ● Yes	● Yes	● Yes
B-400, B-422, B-423, B-428, B-430, B-459, B-473	▲ Yes* × No	× No	● Yes

* In extreme high temperatures, testing of these materials is recommended.

POLYIMIDES

High Temperature White Polyimide (B-457)
 Static Dissipative Polyimide (B-477, B-478, B-479)
 High Temperature Amber Polyimide (B-426)



Part Number	Labels Per Roll	Label Dimensions		Maximum Characters Per Line For Font:			Maximum Lines Of Text For Font:			Maximum Bar Code Characters:	Through Hole Technology		SMT Top / Bottom	After Process
		A Inch (mm)	B Inch (mm)	1	4	6	1	4	6		Top	Bottom		
PTL-1-426	750	0.25 (6.35)	0.25 (6.35)	6	3	2	2	1	1	0	●	●	●	●
PTL-1-457	750	0.25 (6.35)	0.25 (6.35)	6	3	2	2	1	1	0	●	●	●	●
PTL-1-477	750	0.25 (6.35)	0.25 (6.35)	6	3	2	2	1	1	0	●	●	●	●
PTL-1-478	750	0.25 (6.35)	0.25 (6.35)	6	3	2	2	1	1	0	●	●	●	●
PTL-1-479	750	0.25 (6.35)	0.25 (6.35)	6	3	2	2	1	1	0	●	●	●	●
PTL-2-426	100	2.00 (50.80)	0.25 (6.35)	52	30	23	2	1	1	11	●	●	●	●
PTL-2-457	100	2.00 (50.80)	0.25 (6.35)	52	30	23	2	1	1	11	●	●	●	●
PTL-2-477	100	2.00 (50.80)	0.25 (6.35)	52	30	23	2	1	1	11	●	●	●	●
PTL-2-478	100	2.00 (50.80)	0.25 (6.35)	52	30	23	2	1	1	11	●	●	●	●
PTL-2-479	100	2.00 (50.80)	0.25 (6.35)	52	30	23	2	1	1	11	●	●	●	●
PTL-3-426	500	0.375 (9.52)	0.375 (9.52)	10	5	4	4	2	2	0	●	●	●	●
PTL-3-457	500	0.375 (9.52)	0.375 (9.52)	10	5	4	4	2	2	0	●	●	●	●
PTL-3-477	500	0.375 (9.52)	0.375 (9.52)	10	5	4	4	2	2	0	●	●	●	●

* Any label two inches or larger is rotated on liner.

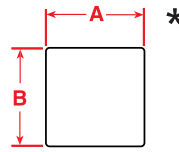
- Yes, this material will work with this application.
- × No, this material does not work with this application.
- ▲ In extreme high temperatures, testing of these materials is recommended.

ELECTRONIC APPLICATION LABELS

CONTINUED

POLYIMIDES CONTINUED

High Temperature White Polyimide (B-457)
Static Dissipative Polyimide (B-477, B-478, B-479)
High Temperature Amber Polyimide (B-426)

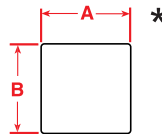


Part Number	Labels Per Roll	Label Dimensions		Maximum Characters Per Line For Font:			Maximum Lines Of Text For Font:			Maximum Bar Code Characters:	Through Hole Technology		SMT Top / Bottom	After Process
		A Inch (mm)	B Inch (mm)	1	4	6	1	4	6		Top	Bottom		
PTL-3-478	500	0.375 (9.52)	0.375 (9.52)	10	5	4	4	2	2	0	●	●	●	●
PTL-3-479	500	0.375 (9.52)	0.375 (9.52)	10	5	4	4	2	2	0	●	●	●	●
PTL-4-426	500	0.40 (10.16)	0.40 (10.16)	10	6	4	4	3	2	0	●	●	●	●
PTL-4-457	500	0.40 (10.16)	0.40 (10.16)	10	6	4	4	3	2	0	●	●	●	●
PTL-4-478	500	0.40 (10.16)	0.40 (10.16)	10	6	4	4	3	2	0	●	●	●	●
PTL-4-479	500	0.40 (10.16)	0.40 (10.16)	10	6	4	4	3	2	0	●	●	●	●
PTL-6-426	750	0.50 (12.70)	0.275 (6.98)	13	7	5	3	1	1	0	●	●	●	●
PTL-6-457	750	0.50 (12.70)	0.275 (6.98)	13	7	5	3	1	1	0	●	●	●	●
PTL-6-478	750	0.50 (12.70)	0.275 (6.98)	13	7	5	3	1	1	0	●	●	●	●
PTL-6-479	750	0.50 (12.70)	0.275 (6.98)	13	7	5	3	1	1	0	●	●	●	●
PTL-9-426	750	0.65 (16.51)	0.20 (5.08)	18	10	7	2	1	1	2	●	●	●	●
PTL-9-457	750	0.65 (16.51)	0.20 (5.08)	18	10	7	2	1	1	2	●	●	●	●
PTL-9-477	750	0.65 (16.51)	0.20 (5.08)	18	10	7	2	1	1	2	●	●	●	●
PTL-9-478	750	0.65 (16.51)	0.20 (5.08)	18	10	7	2	1	1	2	●	●	●	●
PTL-9-479	750	0.65 (16.51)	0.20 (5.08)	18	10	7	2	1	1	2	●	●	●	●
PTL-10-426	750	0.75 (19.05)	0.25 (6.35)	20	12	9	2	1	1	2	●	●	●	●
PTL-10-457	750	0.75 (19.05)	0.25 (6.35)	20	12	9	2	1	1	2	●	●	●	●
PTL-10-477	750	0.75 (19.05)	0.25 (6.35)	20	12	9	2	1	1	2	●	●	●	●
PTL-10-478	750	0.75 (19.05)	0.25 (6.35)	20	12	9	2	1	1	2	●	●	●	●
PTL-10-479	750	0.75 (19.05)	0.25 (6.35)	20	12	9	2	1	1	2	●	●	●	●
PTL-13-426	750	0.90 (22.86)	0.25 (6.35)	25	14	11	2	1	1	4	●	●	●	●
PTL-13-457	750	0.90 (22.86)	0.25 (6.35)	25	14	11	2	1	1	4	●	●	●	●
PTL-13-478	750	0.90 (22.86)	0.25 (6.35)	25	14	11	2	1	1	4	●	●	●	●
PTL-13-479	750	0.90 (22.86)	0.25 (6.35)	25	14	11	2	1	1	4	●	●	●	●
PTL-14-457	750	1.00 (25.40)	0.187 (4.74)	28	16	12	2	1	1	4	●	●	●	●
PTL-14-477	750	1.00 (25.40)	0.187 (4.74)	28	16	12	2	1	1	4	●	●	●	●
PTL-14-478	750	1.00 (25.40)	0.187 (4.74)	28	16	12	2	1	1	4	●	●	●	●
PTL-14-479	750	1.00 (25.40)	0.187 (4.74)	28	16	12	2	1	1	4	●	●	●	●
PTL-16-426	500	1.00 (25.40)	0.375 (9.52)	28	16	12	4	2	2	4	●	●	●	●
PTL-16-457	500	1.00 (25.40)	0.375 (9.52)	28	16	12	4	2	2	4	●	●	●	●
PTL-16-478	500	1.00 (25.40)	0.375 (9.52)	28	16	12	4	2	2	4	●	●	●	●
PTL-16-479	500	1.00 (25.40)	0.375 (9.52)	28	16	12	4	2	2	4	●	●	●	●
PTL-17-426	500	1.00 (25.40)	0.50 (12.70)	28	16	12	5	3	2	4	●	●	●	●
PTL-17-478	500	1.00 (25.40)	0.50 (12.70)	28	16	12	5	3	2	4	●	●	●	●
PTL-17-479	500	1.00 (25.40)	0.50 (12.70)	28	16	12	5	3	2	4	●	●	●	●
PTL-25-426	750	1.25 (31.75)	0.25 (6.35)	35	20	15	2	1	1	6	●	●	●	●
PTL-25-457	750	1.25 (31.75)	0.25 (6.35)	35	20	15	2	1	1	6	●	●	●	●
PTL-25-477	750	1.25 (31.75)	0.25 (6.35)	35	20	15	2	1	1	6	●	●	●	●
PTL-25-478	750	1.25 (31.75)	0.25 (6.35)	35	20	15	2	1	1	6	●	●	●	●
PTL-25-479	750	1.25 (31.75)	0.25 (6.35)	35	20	15	2	1	1	6	●	●	●	●
PTL-27-426	750	1.50 (38.10)	0.125 (3.175)	42	0	0	1	0	0	8	●	●	●	●
PTL-27-457	750	1.50 (38.10)	0.125 (3.175)	42	0	0	1	0	0	8	●	●	●	●
PTL-27-477	750	1.50 (38.10)	0.125 (3.175)	42	0	0	1	0	0	8	●	●	●	●
PTL-27-478	750	1.50 (38.10)	0.125 (3.175)	42	0	0	1	0	0	8	●	●	●	●
PTL-27-479	750	1.50 (38.10)	0.125 (3.175)	42	0	0	1	0	0	8	●	●	●	●
PTL-28-426	750	1.50 (38.10)	0.25 (6.35)	42	24	18	2	1	1	8	●	●	●	●
PTL-28-457	750	1.50 (38.10)	0.25 (6.35)	42	24	18	2	1	1	8	●	●	●	●
PTL-28-477	750	1.50 (38.10)	0.25 (6.35)	42	24	18	2	1	1	8	●	●	●	●
PTL-28-478	750	1.50 (38.10)	0.25 (6.35)	42	24	18	2	1	1	8	●	●	●	●
PTL-28-479	750	1.50 (38.10)	0.25 (6.35)	42	24	18	2	1	1	8	●	●	●	●

* Any label two inches or larger is rotated on liner.

TEDLAR®

Flame-Retardant White Tedlar® (B-437)



Part Number	Labels Per Roll	Label Dimensions		Maximum Characters Per Line For Font:			Maximum Lines Of Text For Font:			Maximum Bar Code Characters:	Through Hole Technology		SMT Top / Bottom	After Process
		A Inch (mm)	B Inch (mm)	1	4	6	1	4	6		Top	Bottom		
PTL-9-437	750	0.65 (16.51)	0.20 (5.08)	18	10	7	2	1	1	2	▲	×	×	●
PTL-10-437	750	0.75 (19.05)	0.25 (6.35)	20	12	9	2	1	1	2	▲	×	×	●
PTL-15-437	750	1.00 (25.40)	0.275 (6.98)	28	16	12	2	1	1	4	▲	×	×	●
PTL-29-437	500	1.50 (38.10)	0.50 (12.70)	42	24	18	5	3	2	8	▲	×	×	●

Tedlar® is a registered trademark of DuPont.

- Yes, this material will work with this application.
- × No, this material does not work with this application.
- ▲ In extreme high temperatures, testing of these materials is recommended.

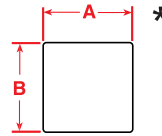
ELECTRONIC APPLICATION LABELS

CONTINUED



POLYESTER

Permanent White Polyester (B-422, B-423, B-459)
Static Dissipative Polyester (B-473)
Permanent Metallized Polyester (B-428)

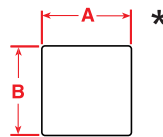


Part Number	Labels Per Roll	Label Dimensions		Maximum Characters Per Line For Font:			Maximum Lines Of Text For Font:			Maximum Bar Code Characters:	Through Hole Technology		SMT Top / Bottom	After Process
		A Inch (mm)	B Inch (mm)	1	4	6	1	4	6		Top	Bottom		
PTL-1-423	750	0.25 (6.35)	0.25 (6.35)	6	3	2	2	1	1	0	▲	×	×	●
PTL-1-473	750	0.25 (6.35)	0.25 (6.35)	6	3	2	2	1	1	0	▲	×	×	●
PTL-2-423	100	2.00 (50.80)	0.25 (6.35)	52	30	23	2	1	1	11	▲	×	×	●
PTL-3-423	500	0.375 (9.52)	0.375 (9.52)	10	5	4	4	2	2	0	▲	×	×	●
PTL-4-423	500	0.40 (10.16)	0.40 (10.16)	10	6	4	4	3	2	0	▲	×	×	●
PTL-5-423	750	0.50 (12.70)	0.20 (5.08)	13	7	5	2	1	1	0	▲	×	×	●
PTL-6-473	750	0.50 (12.70)	0.275 (6.98)	13	7	5	3	1	1	0	▲	×	×	●
PTL-6-423	750	0.50 (12.70)	0.275 (6.98)	13	7	5	3	1	1	0	▲	×	×	●
PTL-7-423	500	0.50 (12.70)	0.50 (12.70)	13	7	5	5	3	2	0	▲	×	×	●
PTL-5-473	750	0.50 (12.70)	0.20 (5.08)	13	7	5	2	1	1	0	▲	×	×	●
PTL-9-423	750	0.65 (16.51)	0.20 (5.08)	18	10	7	2	1	1	2	▲	×	×	●
PTL-9-473	750	0.65 (16.51)	0.20 (5.08)	18	10	7	2	1	1	2	▲	×	×	●
PTL-10-423	750	0.75 (19.05)	0.25 (6.35)	20	12	9	2	1	1	2	▲	×	×	●
PTL-10-473	750	0.75 (19.05)	0.25 (6.35)	20	12	9	2	1	1	2	▲	×	×	●
PTL-13-423	750	0.90 (22.86)	0.25 (6.35)	25	14	11	2	1	1	4	▲	×	×	●
PTL-14-423	750	1.00 (25.40)	0.187 (4.74)	28	16	12	2	1	1	4	▲	×	×	●
PTL-15-423	750	1.00 (25.40)	0.275 (6.98)	28	16	12	2	1	1	4	▲	×	×	●
PTL-15-428	750	1.00 (25.40)	0.275 (6.98)	28	16	12	2	1	1	4	▲	×	×	●
PTL-16-473	500	1.00 (25.40)	0.375 (9.52)	28	16	12	4	2	2	4	▲	×	×	●
PTL-16-423	500	1.00 (25.40)	0.375 (9.52)	28	16	12	4	2	2	4	▲	×	×	●
BPTL-16-423	5000	1.00 (25.40)	0.375 (9.52)	28	16	12	4	2	2	4	▲	×	×	●
PTL-17-473	500	1.00 (25.40)	0.50 (12.70)	28	16	12	5	3	2	4	▲	×	×	●
PTL-17-423	500	1.00 (25.40)	0.50 (12.70)	28	16	12	5	3	2	4	▲	×	×	●
PTL-17-428	500	1.00 (25.40)	0.50 (12.70)	28	16	12	5	3	2	4	▲	×	×	●
PTL-19-422	250	1.00 (25.40)	1.00 (25.40)	28	16	12	12	7	6	4	▲	×	×	●
PTL-19-423	250	1.00 (25.40)	1.00 (25.40)	28	16	12	12	7	6	4	▲	×	×	●
BPTL-19-423	2500	1.00 (25.40)	1.00 (25.40)	28	16	12	12	7	6	4	▲	×	×	●
PTL-20-423	100	2.00 (50.80)	1.00 (25.40)	52	30	23	12	7	6	11	▲	×	×	●
BPTL-20-423	1000	2.00 (50.80)	1.00 (25.40)	52	30	23	12	7	6	11	▲	×	×	●
PTL-20-459	100	2.00 (50.80)	1.00 (25.40)	52	30	23	12	7	6	11	▲	×	×	●
PTL-25-423	750	1.25 (31.75)	0.25 (6.35)	35	20	15	2	1	1	6	▲	×	×	●
PTL-26-423	100	2.75 (69.85)	1.25 (31.75)	50	29	19	13	6	4	18	▲	×	×	●
PTL-26-459	100	2.75 (69.85)	1.25 (31.75)	50	46	34	15	9	7	18	▲	×	×	●
PTL-27-423	750	1.50 (38.10)	0.125 (3.18)	42	0	0	1	0	0	8	▲	×	×	●
PTL-28-423	750	1.50 (38.10)	0.25 (6.35)	42	24	18	2	1	1	8	▲	×	×	●
PTL-28-473	750	1.50 (38.10)	0.25 (6.35)	42	24	18	2	1	1	8	▲	×	×	●
PTL-29-423	500	1.50 (38.10)	0.50 (12.70)	42	24	18	5	3	2	8	▲	×	×	●
BPTL-29-423	5000	1.50 (38.10)	0.50 (12.70)	42	24	18	5	3	2	8	▲	×	×	●
PTL-29-459	500	1.50 (38.10)	0.50 (12.70)	42	24	18	5	3	2	8	▲	×	×	●
PTL-30-459	250	1.50 (38.10)	0.75 (19.05)	42	24	18	9	5	4	8	▲	×	×	●
PTL-37-423	100	3.00 (76.20)	1.90 (48.26)	50	50	37	22	14	11	20	▲	×	×	●
PTL-38-423	100	4.00 (101.6)	1.90 (48.26)	50	50	50	22	14	11	25	▲	×	×	●
PTL-38-459	100	4.00 (101.6)	1.90 (48.26)	50	50	50	22	14	11	25	▲	×	×	●

* Any label two inches or larger is rotated on liner.

VINYL CLOTH

White Vinyl Cloth Repositional Adhesive (B-400)



Part Number	Labels Per Roll	Label Dimensions		Maximum Characters Per Line For Font:			Maximum Lines Of Text For Font:			Maximum Bar Code Characters:	Through Hole Technology		SMT Top / Bottom	After Process
		A Inch (mm)	B Inch (mm)	1	4	6	1	4	6		Top	Bottom		
PTL-7-400	500	0.50 (12.70)	0.50 (12.70)	13	7	5	5	3	2		▲	×	×	●
PTL-10-400	750	0.75 (19.05)	0.25 (6.35)	6	3	2	9	5	4		▲	×	×	●
PTL-15-400	750	1.00 (25.40)	0.275 (6.98)	28	16	12	2	1	1		▲	×	×	●
PTL-16-400	500	1.00 (25.40)	0.375 (9.52)	10	5	4	12	7	6		▲	×	×	●
PTL-17-400	500	1.00 (25.40)	0.50 (12.70)	28	16	12	5	3	2		▲	×	×	●
PTL-29-400	500	1.50 (38.10)	0.50 (12.70)	42	24	18	18	11	9		▲	×	×	●
BPTL-29-400	5000	1.50 (38.10)	0.50 (12.70)	42	24	18	18	11	9		▲	×	×	●
PTL-32-400	250	1.50 (38.10)	1.50 (38.10)	42	24	18	18	11	9		▲	×	×	●

* Vinyl cloth material is not recommended for bar code printing.

- Yes, this material will work with this application.
- × No, this material does not work with this application.
- ▲ In extreme high temperatures, testing of these materials is recommended.



Identification Solutions
& Specialty Tapes

U.S.A.
6555 W. Good Hope Road
P.O. Box 2131
Milwaukee, Wisconsin
53201-2131
Phone: 1-800-537-8791
Fax: 1-800-292-2289

Canada
56 Leek Crescent
Richmond Hill
Ontario L4B 1H1
CANADA
Phone: 1-800-263-6179
Fax: 1-800-387-4935

www.tls2200.com

WORLDWIDE LOCATIONS

Australia 1-800-620-816	Korea 82-2-400-8418
Belgium 32-(0)-152-457-811	Latin America 1-414-540-5560
Brazil 55-11-3686-4720	Malaysia 60-4-283-3980
Canada 1-800-263-6179	Mexico 525-399-6963
China (Beijing) 86-10-6517-1260	New Zealand 61-2-8717-2200
China (Wuxi) 86-510-528-2222	Philippines 632-658-2077
England 44-(0)-1295-228-200	Singapore 65-775-2077
France 00-33-1-69-29-67-00	Sweden 46-(0)-859-005-730
Germany 49-(0)-607-196-03	Taiwan 88-(8)-2-2345-1430
Hong Kong 852-2359-3149	Thailand 66-2-943-0777
Italy 39-02-967-00-507	U.S.A. 1-800-537-8791
Japan 81-45-461-3600	



Y37455-F



PRINTED ON
RECYCLED PAPER

TLS2200® is a trademark of BRADY U.S.A., Inc.
©2002 BRADY Worldwide, Inc. Printed in U.S.A.
Specifications subject to change without notice.
All rights reserved. Y37455-F
4-KK-02-VAM-90 Effective 4-02
AN ISO REGISTERED COMPANY