

Plastic Boxes

UL/NEMA/IEC NBA Series



[Click on Image for Larger View](#)

These gasketed enclosure meet NEMA 4X, IEC529, IP65, and UL-508-4X specifications which allows them to be used in many wet, dirty and/or corrosive environments.

Design Features

Indoor Versions:


*ABS/PC blended plastic with UL94-5VB flammability rating. Suggested service temperature range -40C to +70C.

*Clear doors are polycarbonate with UL94-5VA flammability rating.

Outdoor Versions:

*PC/PBT blended plastic with UL94-5VA flammability rating and UV stabilized

Catalog Number				NBA Series											
Solid Door	Clear Door	Solid Door	Clear Door	Drawings	A	B	C	A	B	C	D	E	F	G	Wgt. Lbs.
NBA-10142	NBA-10162			PDF DXF	300mm	200mm	150mm	11.80"	7.85"	5.97"	4.80"	11.00"	7.02"	5.69"	2.2

NBA-10144	NBA-10164	Contact BUD Factory		300mm	200mm	180mm	11.80"	7.85"	7.09"	5.90"	11.00"	7.02"	6.80"	2.5
NBA-10148	NBA-10168			400mm	300mm	180mm	15.75"	11.80"	7.09"	5.90"	14.93"	10.94"	6.80"	4.7
NBA-10152	NBA-10172			500mm	400mm	200mm	19.68"	15.75"	7.87"	6.69"	18.85"	14.90"	7.60"	7.4
NBA-10156	NBA-10176			600mm	400mm	230mm	23.61"	15.75"	9.06"	7.87"	22.78"	14.90"	8.80"	9.5

 Autocad DXF Specifications File
(Requires CAD software such as AutoCAD)

 Adobe PDF Specifications File



[Download PDF Viewer](#)

[Home](#) | [Company Info](#) | [Online Catalog](#) | [Check Stock](#) | [Distributor/Price](#)

[Reps](#) | [New](#) | [Search](#) | [Contact](#) | [Privacy Policy](#)

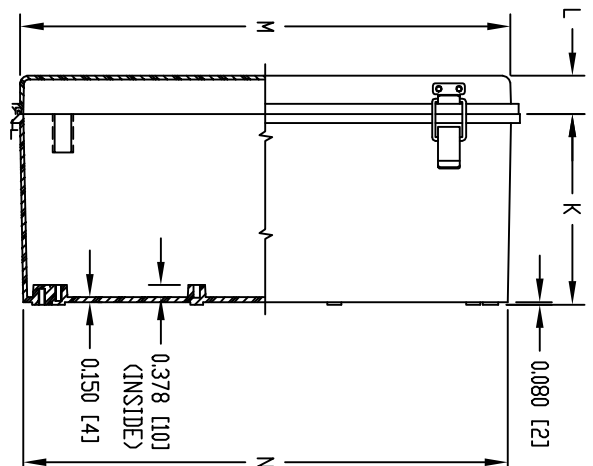
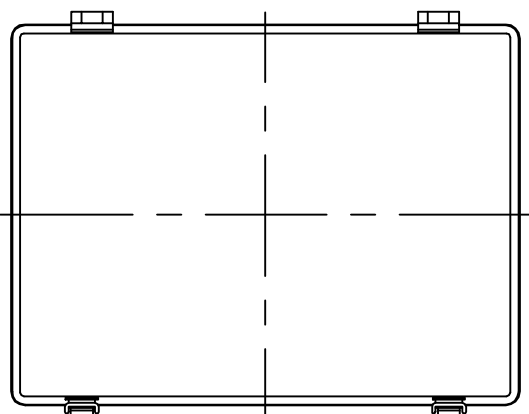
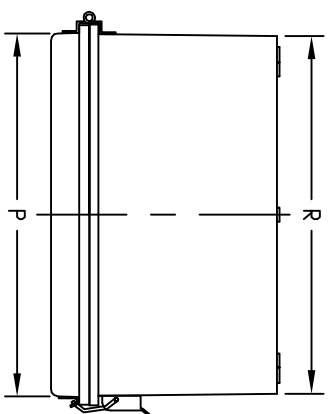
BUD INDUSTRIES INC.

P.O. Box 998
Willoughby, Ohio 44094
Phone: 440-946-3200 Fax: 440-951-4015
E-Mail: saleseast@budind.com

PART NAME LARGE NON-METALLIC ENCLOSURE (STYLE A)

PART NO.

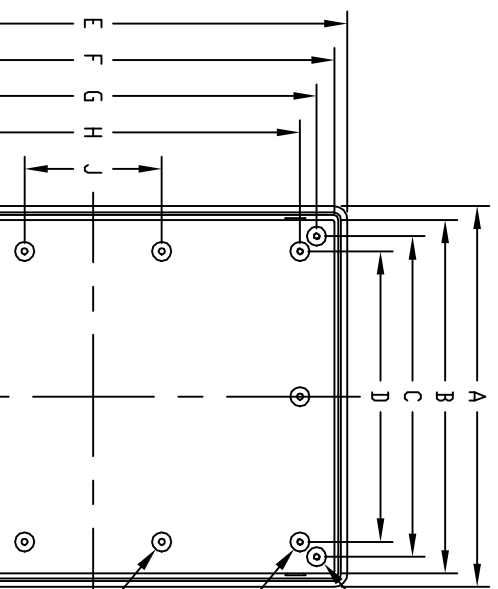
NBA-10148 & NBA-10168



MATERIAL:
 SOLID BODY & COVER — ABS/PC BLENDED PLASTIC
 UL94-5VB FLAMMABILITY RATING
 -40°C TO +70°C TEMPERATURE RANGE
 CLEAR COVER — POLYCARBONATE PLASTIC
 UL94-V0 FLAMMABILITY RATING
 -40°C TO +70°C TEMPERATURE RANGE
 UV STABILIZED

LATCHES, HINGES &
 WALL MOUNTING BRACKETS — STAINLESS STEEL

FINISH:
 BODY — LIGHT GRAY
 COVER — LIGHT GRAY OR CLEAR



VIEW LESS COVER

0.590 (15) DIA. BOSS WITH M5 x 0.8mm THREADED BRASS INSERT (4) PLACES FAR SIDE

0.590 (15) DIA. BOSS WITH M5 x 0.8mm THREADED BRASS INSERT (4) PLACES

0.590 (15) DIA. BOSS WITH 0.197 (5) DIA. HOLE x 0.395 (10) DEEP (6) PLACES

COVER IS GASKETED.

NOTE: UNIT COMES COMPLETE WITH FOUR (4) STAINLESS STEEL WALL MOUNTING BRACKETS. (NOT SHOWN)

INTERNAL HINGED PANEL MOUNTING BRACKETS, AIR & MOISTURE VENTS, STAINLESS STEEL LOCKING HASP AND GALVANIZED STEEL INTERNAL PANEL ARE NOT INCLUDED, BUT CAN BE PURCHASED SEPARATELY.

INDUSTRY STANDARDS:
 UL508 TYPE 1, 2, 4, 4X INDOOR, 12 & 13
 NEMA TYPE 1, 2, 4, 4X, 12 & 13
 IEC529, IP66

DIMENSIONS = INCHES [MILLIMETERS]

NOTE: ALL DIMENSIONS HAVE ±0.039 [+/-] TOLERANCE UNLESS OTHERWISE SPECIFIED

PART NO.	PART NO.		DIMENSIONS															
	SOLID COVER	CLEAR COVER	A	B	C	D	E	F	G	H	J	K	L	M	N	P	R	
NBA-10148	NBA-10168		11.792 [300]	10.938 [278]	9.923 [252]	8.993 [228]	15.742 [400]	14.930 [379]	13.838 [351]	12.810 [325]	4.251 [108]	5.895 [150]	1.185 [30]	15.167 [385]	15.000 [381]	11.241 [286]	11.064 [281]	