

PART NAME	LARGE NON-METALLIC ENCLOSURE (STYLE D)	PART No.	NBD-10456 & NBD-10476 & NBD-15456
-----------	----------------------------------------	----------	-----------------------------------

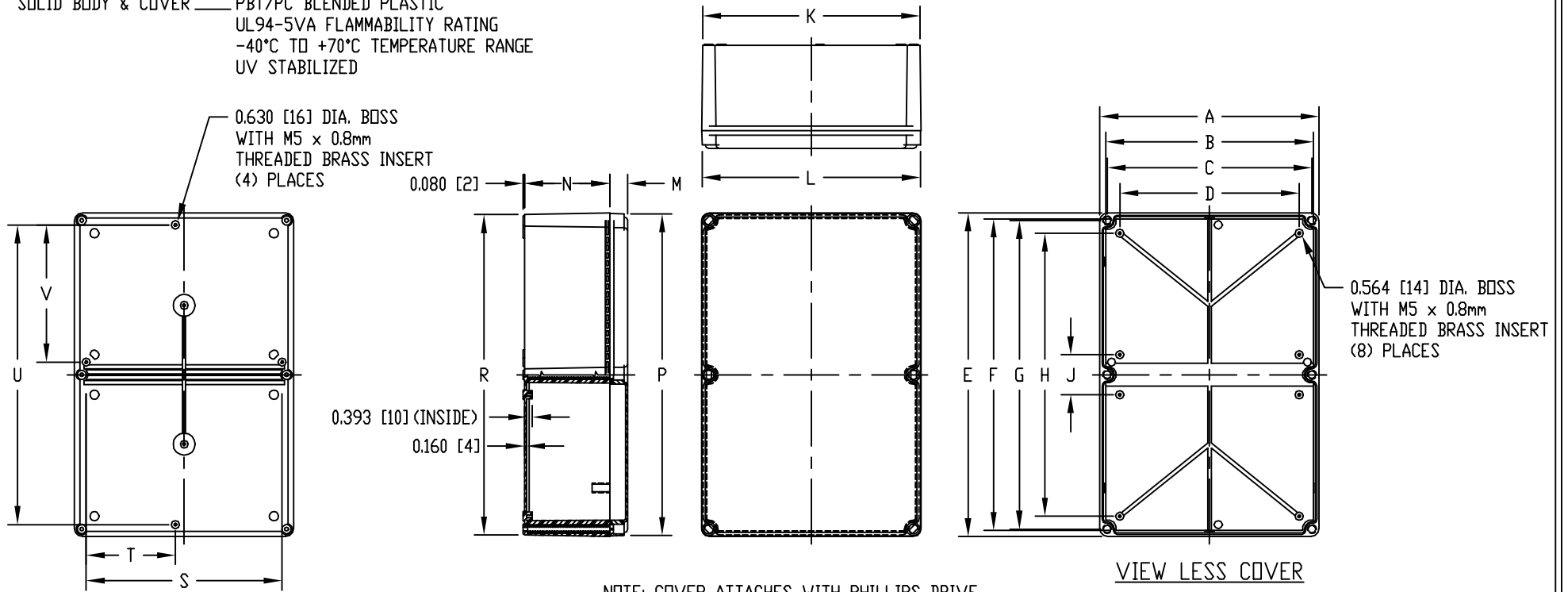
**MATERIAL:**  
**INDOOR RATED**  
 SOLID BODY & COVER \_\_\_\_\_ ABS/PC BLENDED PLASTIC  
 UL94-5VB FLAMMABILITY RATING  
 -40°C TO +70°C TEMPERATURE RANGE  
 CLEAR COVER \_\_\_\_\_ POLYCARBONATE PLASTIC  
 UL94-V0 FLAMMABILITY RATING  
 -40°C TO +70°C TEMPERATURE RANGE  
 UV STABILIZED

**OUTDOOR RATED**  
 SOLID BODY & COVER \_\_\_\_\_ PBT/PC BLENDED PLASTIC  
 UL94-5VA FLAMMABILITY RATING  
 -40°C TO +70°C TEMPERATURE RANGE  
 UV STABILIZED

**FINISH:**  
 BODY \_\_\_\_\_ LIGHT GRAY  
 COVER \_\_\_\_\_ LIGHT GRAY OR CLEAR

COVER IS GASKETED.  
 AIR AND MOISTURE VENTS, STAINLESS STEEL LOCKING HASP, PANEL MOUNTING RAILS, GALVANIZED STEEL INNER PANEL AND STAINLESS STEEL WALL MOUNTING BRACKETS ARE NOT INCLUDED, BUT CAN BE PURCHASED SEPARATELY.

**INDUSTRY STANDARDS:**  
**INDOOR RATED**  
 UL508 TYPE 1, 2, 4, 4X INDOOR, 12 & 13  
 NEMA TYPE 1, 2, 4, 4X, 12 & 13  
 IEC529, IP66  
**OUTDOOR RATED**  
 UL508 TYPE 1, 2, 4, 4X, 12 & 13  
 NEMA TYPE 1, 2, 4, 4X, 12 & 13  
 IEC529, IP66



NOTE: COVER ATTACHES WITH PHILLIPS DRIVE NON-METALLIC SCREWS. (NOT SHOWN)

NOTE: ALL DIMENSIONS HAVE ±0.039 [±1] TOLERANCE UNLESS OTHERWISE SPECIFIED

DIMENSIONS = INCHES [MILLIMETERS]

INDOOR RATED			OUTDOOR RATED			DIMENSIONS															
PART NO.			PART NO.			DIMENSIONS															
SOLID COVER	CLEAR COVER	SOLID COVER	A	B	C	D	E	F	G	H	J	K	L	M	N	P	R	S	T	U	V
NBD-10456	NBD-10476	NBD-15456	14.975 [380]	14.170 [360]	13.984 [355]	12.252 [311]	22.085 [561]	21.260 [540]	21.062 [535]	19.313 [491]	2.724 [69]	14.838 [377]	14.890 [378]	1.210 [31]	5.825 [148]	21.958 [558]	21.870 [555]	13.378 [340]	6.093 [155]	20.455 [520]	9.360 [238]