



# QUALITY ENCLOSURES

[Home](#)

[Product Catalog](#)

[Representatives](#)

[Search](#)

[Company Info](#)

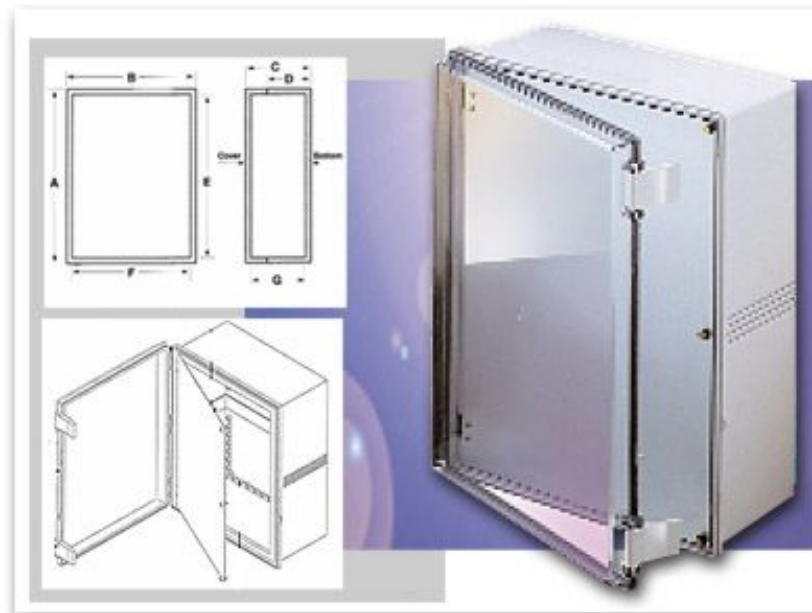
[Distributors](#)

[What's New](#)

[Contact](#)

Plastic Boxes

## UL/NEMA/IEC NBE Series



[Click on Image for Larger View](#)

These gasketed enclosure meet NEMA 4X, IEC529, IP65, and UL-508-4X specifications which allows them to be used in many wet, dirty and/or corrosive environments.

## Design Features

### Indoor Versions:

\*ABS/PC blended plastic with UL94-5VB flammability rating. Suggested service temperature range -40C to +70C.

\*Clear doors are polycarbonate with UL94-5VA flammability rating.

### Outdoor Versions:

\*PC/PBT blended plastic with UL94-5VA flammability rating and UV stabilized



Catalog Number				NBE Series											
Indoor Version		Outdoor Version		Drawings	Nominal Sizes			Actual External				Internal			Wgt.
Solid Door	Clear Door	Solid Door	Clear Door		A	B	C	A	B	C	D	E	F	G	Lbs.
NBE-10543	NBE-10563	<b>Contact BUD Factory</b>		<a href="#">PDF</a> <a href="#">DXF</a>	290mm	190mm	140mm	11.28"	7.47"	5.50"	4.33"	10.46"	6.65"	5.25"	3.5
NBE-10547	NBE-10567			<a href="#">PDF</a> <a href="#">DXF</a>	390mm	290mm	160mm	15.68"	11.73"	6.30"	5.11"	14.88"	10.89"	6.03"	6.3
NBE-10553	NBE-10573			<a href="#">PDF</a> <a href="#">DXF</a>	465mm	350mm	200mm	19.17"	14.64"	7.85"	6.67"	18.33"	13.75"	7.60"	7.9
NBE-10558	NBE-10578			<a href="#">PDF</a> <a href="#">DXF</a>	700mm	500mm	250mm	28.91"	21.03"	9.87"	8.66"	27.56"	19.67"	9.53"	9.8

[DXF](#) Autocad DXF Specifications File  
(Requires CAD software such as AutoCAD)

[PDF](#) Adobe PDF Specifications File



[Download PDF Viewer](#)

[Home](#) | [Company Info](#) | [Online Catalog](#) | [Check Stock](#) | [Distributor/Price](#)

[Reps](#) | [New](#) | [Search](#) | [Contact](#) | [Privacy Policy](#)

## BUD INDUSTRIES INC.

P.O. Box 998

Willoughby, Ohio 44094

Phone: 440-946-3200 Fax: 440-951-4015

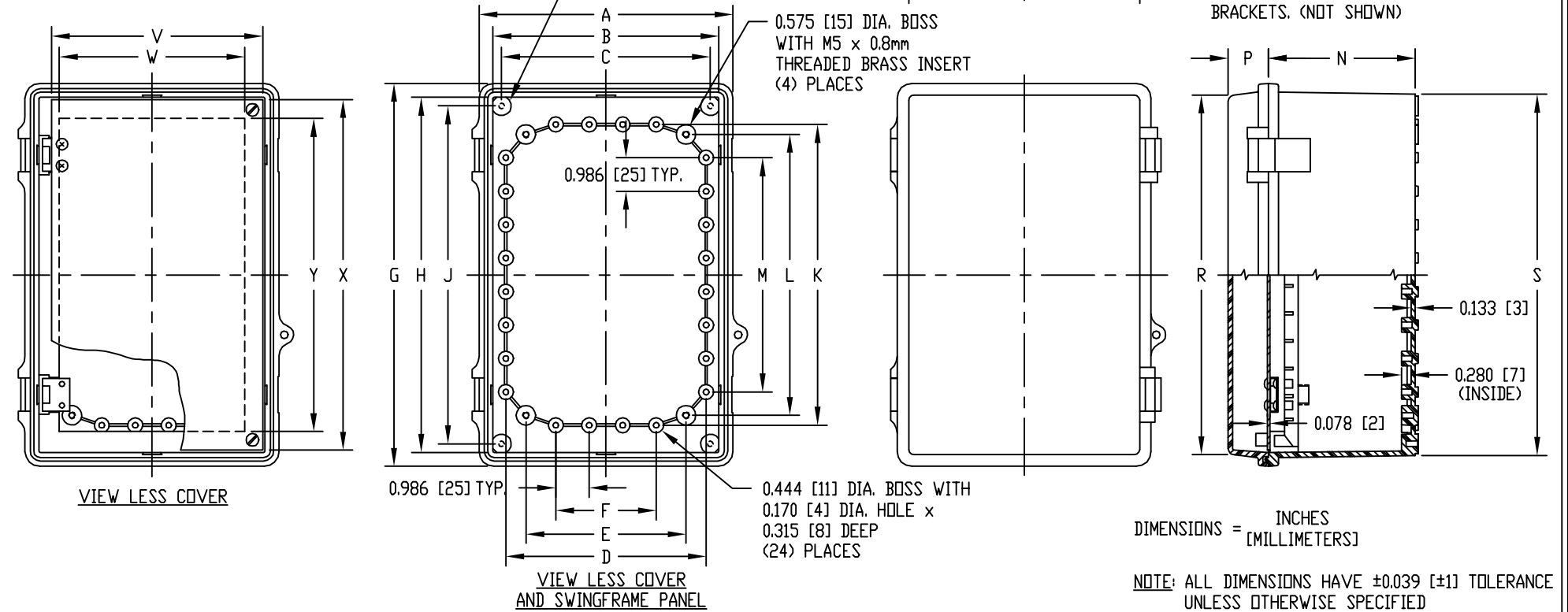
E-Mail: [saleseast@budind.com](mailto:saleseast@budind.com)

<b>PART NAME</b>	<b>LARGE NON-METALLIC ENCLOSURE (STYLE E)</b>	<b>PART No.</b>	<b>NBE-10543 AND NBE-10563</b>
------------------	---	-----------------	--------------------------------

**MATERIAL:**  
 SOLID BODY & COVER \_\_\_\_\_ ABS/PC BLENDED PLASTIC  
 UL94-5VB FLAMMABILITY RATING  
 -40°C TO +70°C TEMPERATURE RANGE  
 CLEAR COVER \_\_\_\_\_ POLYCARBONATE PLASTIC  
 UL94-VD FLAMMABILITY RATING  
 -40°C TO +70°C TEMPERATURE RANGE  
 UV STABILIZED  
 PANEL \_\_\_\_\_ 0.078 THICK ALUMINUM  
 LATCHES & HINGES \_\_\_\_\_ NON-METALLIC  
 WALL MOUNTING BRACKETS \_\_\_\_\_ STAINLESS STEEL

**FINISH:**  
 BODY \_\_\_\_\_ LIGHT GRAY  
 COVER \_\_\_\_\_ LIGHT GRAY OR CLEAR  
 PANEL \_\_\_\_\_ ANODIZED  
 COVER IS GASKETED.

**INDUSTRY STANDARDS:**  
 UL508 TYPE 1, 2, 4, 4X INDOOR, 12 & 13  
 NEMA TYPE 1, 2, 4, 4X, 12 & 13  
 IEC529, IP66  
 AIR AND MOISTURE VENTS, GALVANIZED STEEL INTERNAL PANEL AND STAINLESS STEEL LOCKING HASP ARE NOT INCLUDED, BUT CAN BE PURCHASED SEPARATELY.  
 UNIT COMES COMPLETE WITH FOUR (4) STAINLESS STEEL WALL MOUNTING BRACKETS. (NOT SHOWN)



PART NO.		DIMENSIONS																					
SOLID COVER	CLEAR COVER	A	B	C	D	E	F	G	H	J	K	L	M	N	P	R	S	T	U	V	W	X	Y
NBE-10543	NBE-10563	7.475	6.650	6.150	5.900	4.717	2.960	11.280	10.462	9.955	8.860	8.278	6.902	4.330	1.185	10.600	10.640	6.800	6.840	6.227	5.460	10.335	9.220
		[190]	[169]	[156]	[150]	[120]	[75]	[287]	[266]	[253]	[225]	[210]	[175]	[110]	[30]	[269]	[270]	[173]	[175]	[158]	[139]	[263]	[234]