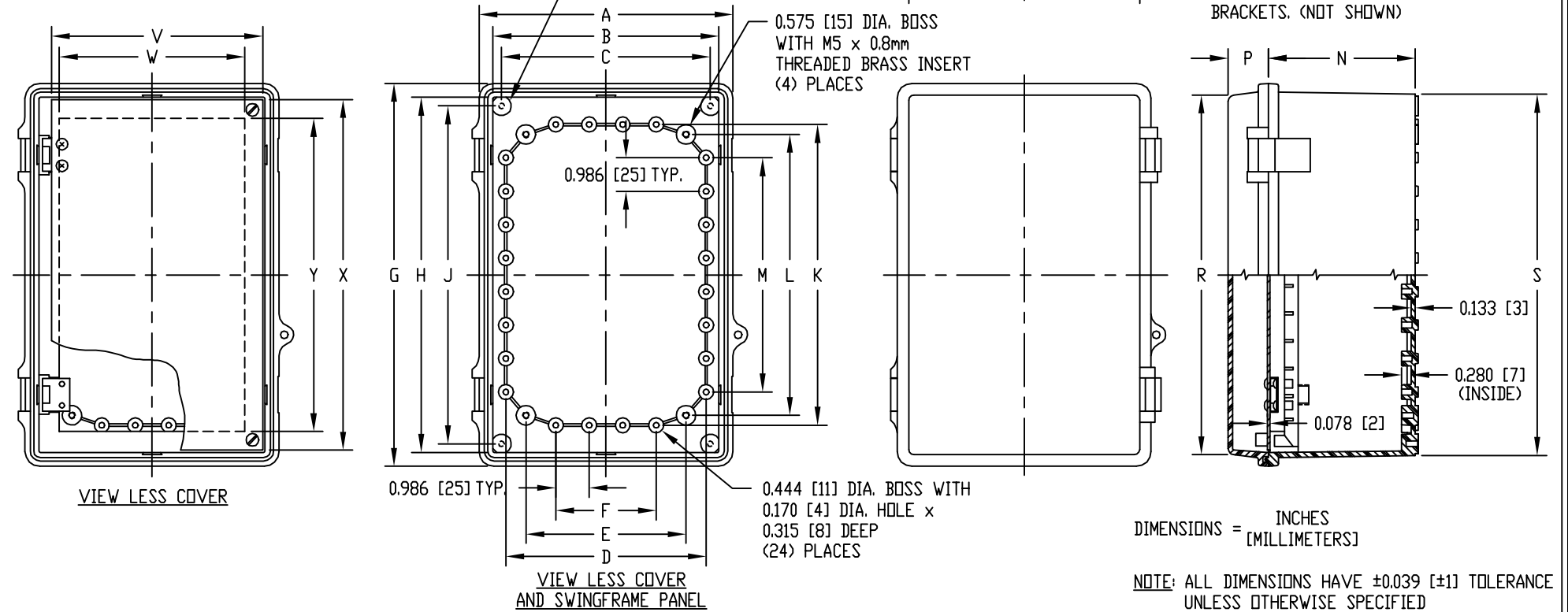


PART NAME	LARGE NON-METALLIC ENCLOSURE (STYLE E)	PART No.	NBE-10543 AND NBE-10563
------------------	---	-----------------	--------------------------------

MATERIAL:
 SOLID BODY & COVER _____ ABS/PC BLENDED PLASTIC
 UL94-5VB FLAMMABILITY RATING
 -40°C TO +70°C TEMPERATURE RANGE
 CLEAR COVER _____ POLYCARBONATE PLASTIC
 UL94-VD FLAMMABILITY RATING
 -40°C TO +70°C TEMPERATURE RANGE
 UV STABILIZED
 PANEL _____ 0.078 THICK ALUMINUM
 LATCHES & HINGES _____ NON-METALLIC
 WALL MOUNTING BRACKETS _____ STAINLESS STEEL

FINISH:
 BODY _____ LIGHT GRAY
 COVER _____ LIGHT GRAY OR CLEAR
 PANEL _____ ANODIZED
 COVER IS GASKETED.

INDUSTRY STANDARDS:
 UL508 TYPE 1, 2, 4, 4X INDOOR, 12 & 13
 NEMA TYPE 1, 2, 4, 4X, 12 & 13
 IEC529, IP66
 AIR AND MOISTURE VENTS, GALVANIZED STEEL INTERNAL PANEL AND STAINLESS STEEL LOCKING HASP ARE NOT INCLUDED, BUT CAN BE PURCHASED SEPARATELY.
 UNIT COMES COMPLETE WITH FOUR (4) STAINLESS STEEL WALL MOUNTING BRACKETS. (NOT SHOWN)



PART NO.		DIMENSIONS																					
SOLID COVER	CLEAR COVER	A	B	C	D	E	F	G	H	J	K	L	M	N	P	R	S	T	U	V	W	X	Y
NBE-10543	NBE-10563	7.475 [190]	6.650 [169]	6.150 [156]	5.900 [150]	4.717 [120]	2.960 [75]	11.280 [287]	10.462 [266]	9.955 [253]	8.860 [225]	8.278 [210]	6.902 [175]	4.330 [110]	1.185 [30]	10.600 [269]	10.640 [270]	6.800 [173]	6.840 [175]	6.227 [158]	5.460 [139]	10.335 [263]	9.220 [234]