

PART NAME NEMA 4X ENCLOSURE

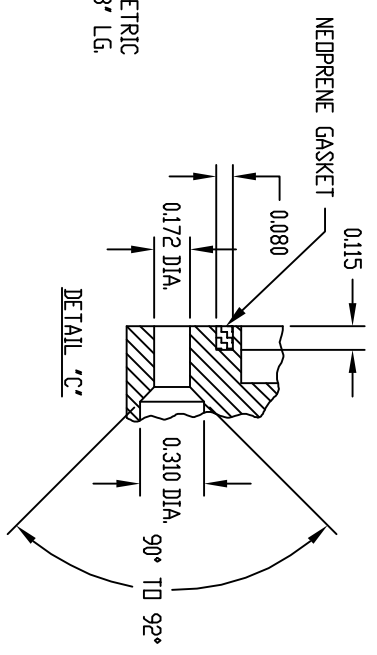
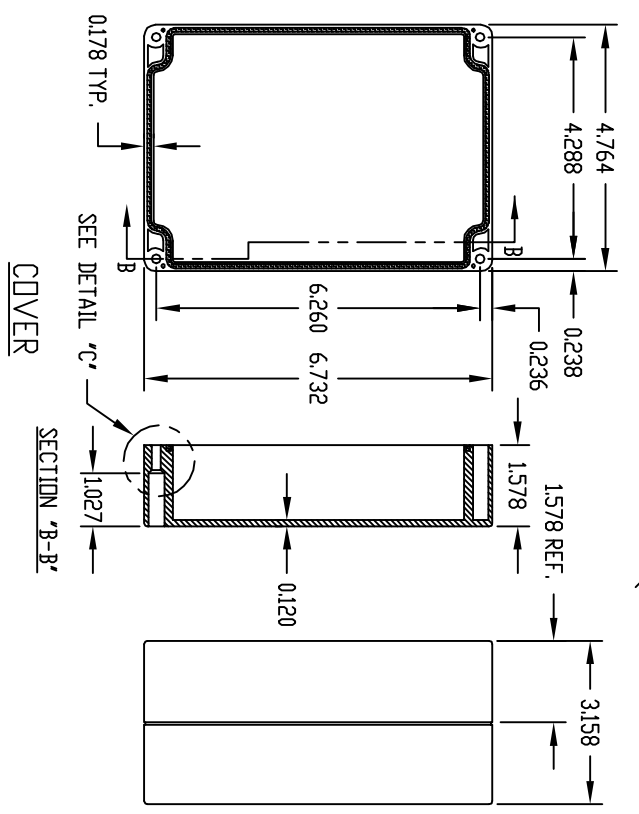
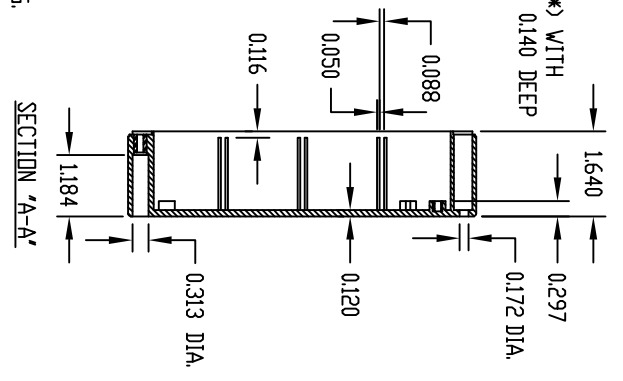
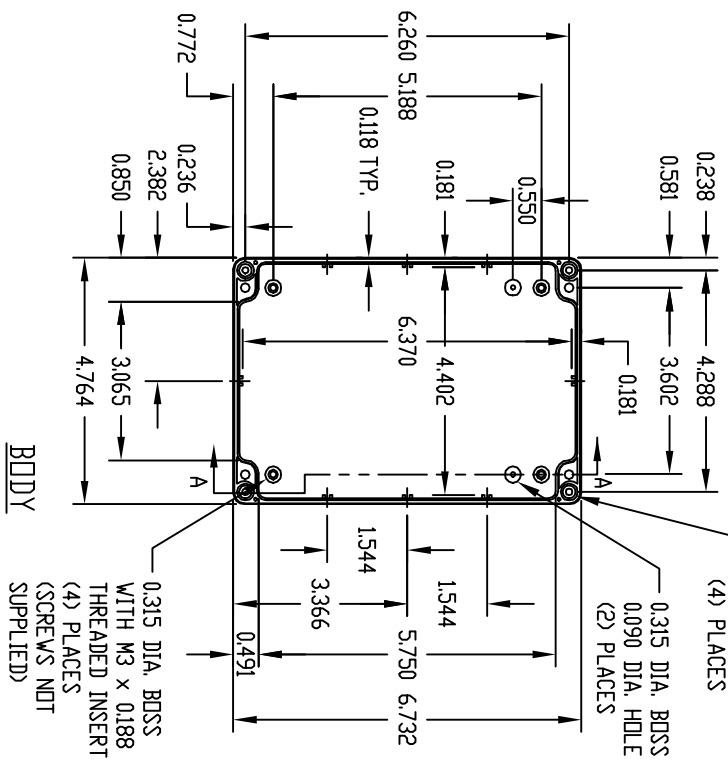
PART No.

PN-1327, PN-1327-C AND PN-1327-DG

INDUSTRY STANDARDS:
 POLYCARBONATE (LIGHT GRAY AND CLEAR)
 UL 94V-2 FLAMMABILITY RATING
 (UL FILE #E41613)
 UV STABILIZED
 SERVICE TEMPERATURE RANGE:
 -40°C TD +120°C

ABS (DARK GRAY)
 UL 94-HB FLAMMABILITY RATING
 (UL FILE #E56070)
 SERVICE TEMPERATURE RANGE:
 -40°C TD +80°C

(* MOUNTING BOSSES USE EITHER M2.5 METRIC OR #4 STD. SHEET METAL SCREWS x 0.188" LG. (NOT SUPPLIED)



NOTE: ALL DIMENSIONS HAVE ±0.015 TOLERANCE UNLESS OTHERWISE SPECIFIED.

PART NUMBER	MATERIAL	FINISH	HARDWARE KIT
PN-1327	BODY COVER	BODY COVER	KIT CONTAINS (4) M4 x 20mm (0.787") LG. SCREWS FOR ASSEMBLY
PN-1327-C	POLYCARBONATE	LIGHT GRAY	
PN-1327-DG	POLYCARBONATE	CLEAR	
PN-1327-DG	HIGH-IMPACT ABS	DARK GRAY	