

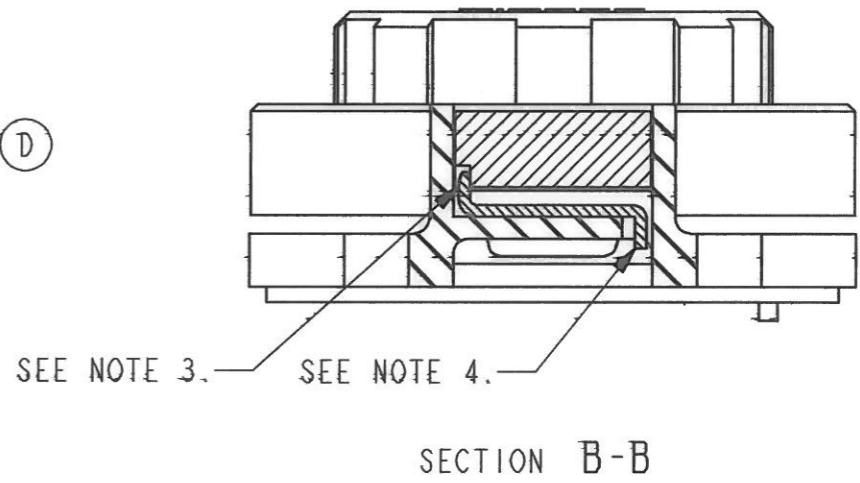
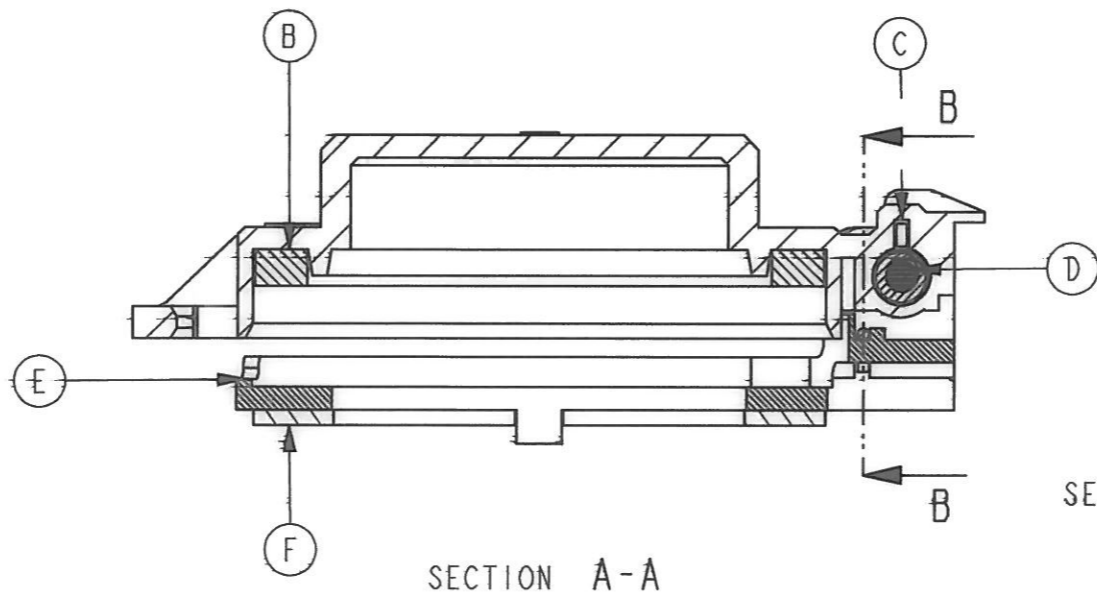
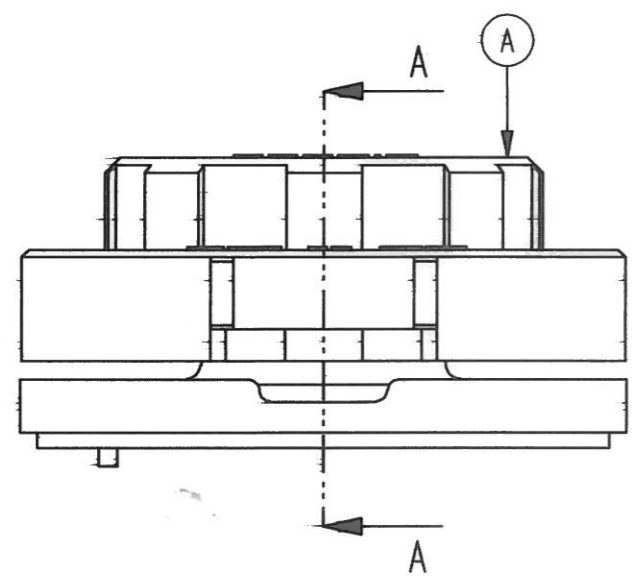
ISS	CHANGE	DATE	ISS	CHANGE	DATE	ISS	CHANGE	DATE
1		1.8.7						
2	CN13512	22.5.8						

THIRD-ANGLE  
PROJECTION  
  
DO NOT SCALE  
DRAWING

DRAWN RGR  
CHK. D  
SCALE 2:1  
REV. No.

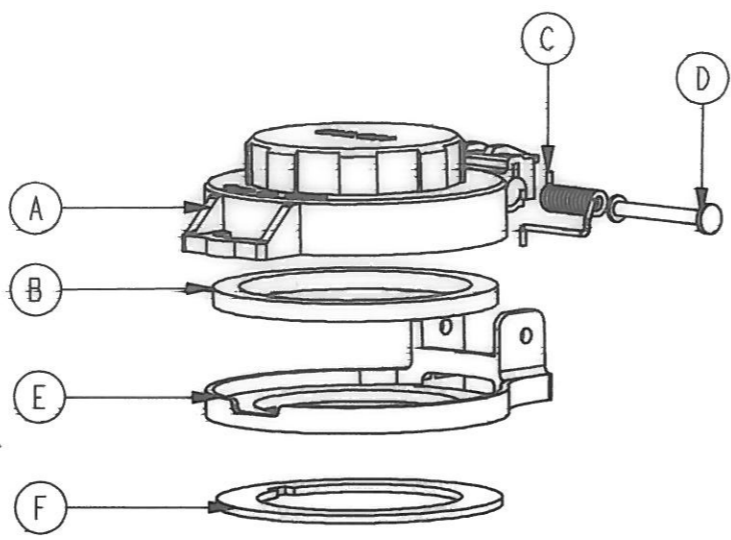
**BULGIN**  
Electrical - Electronic Components  
BULGIN COMPONENTS PLC.  
HELVILLE COURT SPILSBY ROAD ROCHFORD ESSEX SXS 8SD UK  
TELEPHONE 01700 336300  
FAX 01700 374010  
THIS DRAWING & DESIGN IS THE COPYRIGHT OF BULGIN COMPONENTS PLC & MUST NOT BE USED FOR ANY PURPOSE OTHER THAN THAT FOR WHICH IT IS SUPPLIED. REPRODUCTION OR DISCLOSURES TO A THIRD PARTY FORBIDDEN WITHOUT WRITTEN PERMISSION.

PX0713  
TITLE  
SPRUNG LOADED CAP

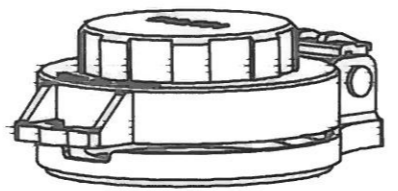


NOTES.

1. REMOVE ADHESIVE BACKING FROM GASKET REF 'B'
2. REMOVE AND DISPOSE OF CENTRAL WASTE DISC FROM GASKET. ASSEMBLE GASKET INTO CAP MOULDING REF 'A'. ENSURE (2) NEAT CONCENTRIC FIT.
3. ASSEMBLE SPRING REF 'C' INTO CAP MOULDING REF 'A'. ENSURE TORSION ARM IS FULLY ASSEMBLED AND HELD UNDER WEB.
4. ASSEMBLE BASE MOULDING REF 'E' TO CAP. ENSURE ARM OF SPRING PASSES THROUGH HOLE IN BASE. (SEE SECTION B)
5. PASS RIVET THROUGH ASSEMBLY AND SECURELY SWAG RIVET.
6. GASKET REF 'F' TO BE SUPPLIED LOOSE.



SCRAP VIEW SHOWING COMPONENTS EXPLODED SCALE 1:1



SCRAP VIEW SHOWING FINISHED COMPONENT SCALE 1:1

F	12106	1	GASKET
E	14265	1	BASE MOULDING
D	14268	1	RIVET
C	14267	1	TORSION SPRING
B	14272	1	SELF ADHESIVE GASKET
A	14266	1	SPRUNG CAP MOULDING
REF	PART No.	QTY	DESCRIPTION