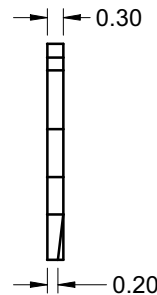
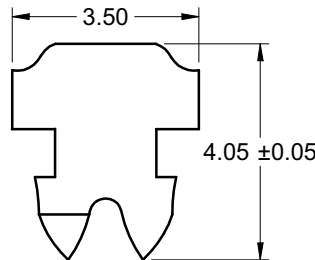
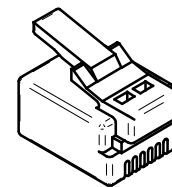
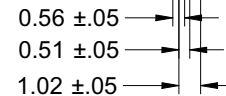
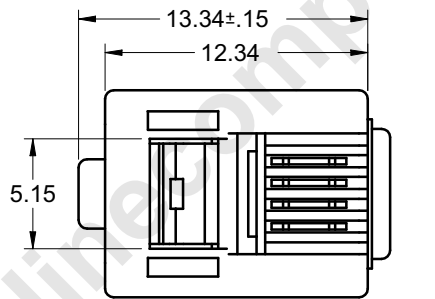
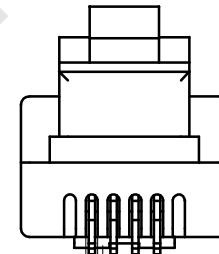
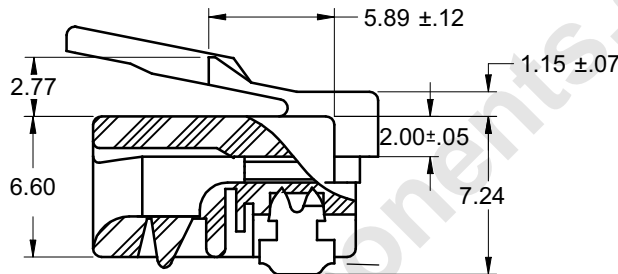
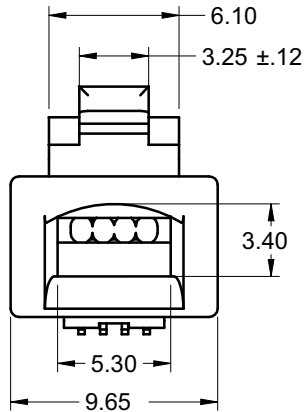
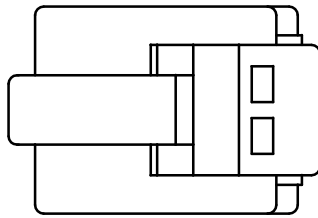


| | | | | | |
|-------------------------------|-----------|-----------|----|------------------|-----------|
| 受控 CONTROLLED DOCUMENT | | | | | |
| 编号 P/N | 32-5994UL | 版本 Rev | 01 | 日期 Rel'd Date | SEP 14,09 |

DRAWING NO.
32-5994UL

| REVISIONS | | | | | |
|-----------|------------------|---|---|---|--------------|
| 01 | OFFICIAL RELEASE | Y | T | T | <i>Betty</i> |
| 08-19-09 | | U | W | | |



NOTES:

1. ELECTRICAL SPECIFICATIONS

INSULATION RESISTANCE: 1000 MEGOHMS
WITHSTAND VOLTAGE: 1000V,AC/ MINUTE

2. MECHANICAL SPECIFICATIONS

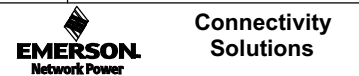
CONTACT MATERIAL: PHOSPHOR BRONZE 0.3MM THICKNESS
CONTACT PLATING: 50 MICRO-INCH GOLD PLATE OVER 100 MICRO-INCH NICKEL PLATING
HOUSING MATERIAL: POLYCARBONATE
DURABILITY: 1000 CYCLES MIN
UL FLAMABILITY RATING: 94-V0

3. ENVIRONMENTAL SPECIFICATIONS

TEMPERATURE RANGE: -40 °C TO +70°C

THIS DRAWING TO BE INTERPRETED
PER ANSI Y 14.5M - 1994

COMPANY CONFIDENTIAL



| | | |
|--------------------------------------|-------------|----------|
| TOLERANCE UNLESS OTHERWISE SPECIFIED | DRAWN BY | DATE |
| DECIMALS | BETTY.YU | 09-15-05 |
| X | CHECKED BY | DATE |
| ± 0.5 | TERRY.W | 09-15-05 |
| X.X | APPROVED BY | DATE |
| ± 0.15 | THOMAS | 09-15-05 |
| X.XX | U/M: | mm |
| ± 0.10 | | |
| ANGLES | | |
| ± 0.5° | | |

TITLE
RJ11 MOD PLUG FOR ROUND SOLID

| | | |
|--------|-------------|------|
| SHEET | DRAWING NO. | SIZE |
| 1 OF 1 | 32-5994UL | C |

THIS DRAWING WAS PRODUCED BY COMPUTER.
DO NOT SCALE DRAWING OR UPDATE MANUALLY.