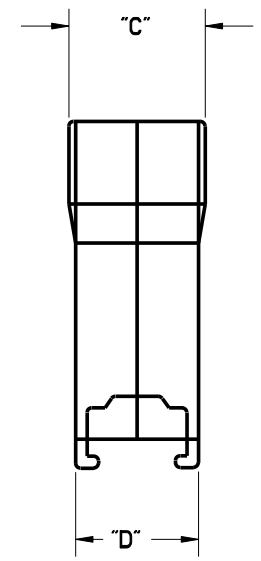
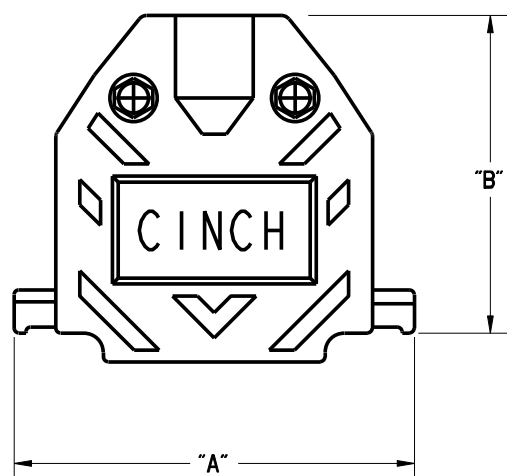
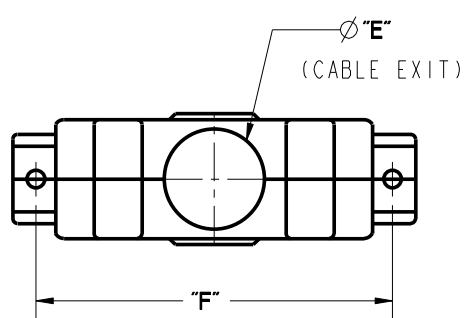


DRAWING REVISIONS

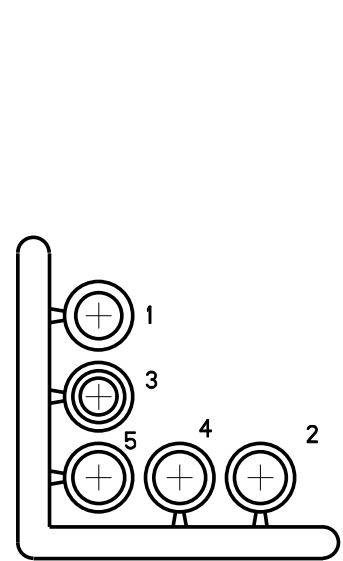
REV	DOCUMENT	APP	DATE
1	DO 05-1162		



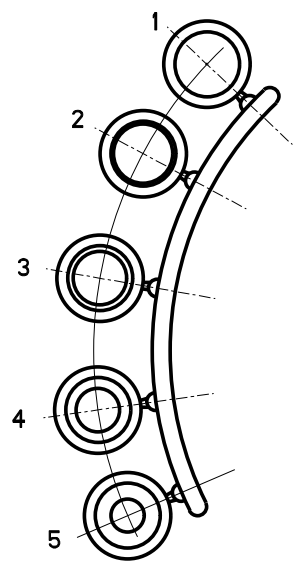
NOTES:

- SPECIFICATIONS:
 - A. COVER - PLASTIC, ABS POLYMER
NICKEL OVER COPPER PLATING
 - B. INSERTS - PLASTIC, POLYPROPYLENE (BLACK)
 - C. HARDWARE
SCREWS # 4-40
HEX NUTS # 4-40
SCREW MOUNTING BRACKET, STEEL,
ZINC PLATE WITH CLEAR CHROMATE ROHS COMPLIANT.
- DIMENSIONS IN [] ARE IN MILLIMETERS.

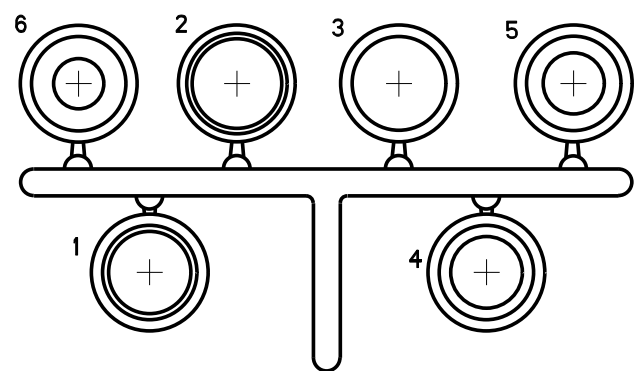
SIZE	CATALOG PART NUMBER	FACTORY NUMBER	"A"	"B"	"C"	"D"	"E"	"F"
9	DCH-E-003	702 49 09 021	1.225 [31.12]	1.547 [32.29]	.640 [16.26]	.645 [16.38]	.400 [10.16]	.984 [24.99]
15	DCH-A-003	702 49 15 021	1.540 [39.12]	1.516 [38.51]				1.312 [33.32]
25	DCH-B-003	702 49 25 021	2.090 [53.09]	1.655 [42.04]	.710 [18.03]		.522 [13.26]	1.857 [47.17]
37	DCH-C-003	702 49 37 021	2.730 [69.34]	1.830 [46.48]	.906 [23.01]		.725 [18.41]	2.500 [63.50]



INSERT 9-15 SIZES



INSERT 25 SIZE



INSERT 37 SIZE

ROHS COMPLIANT

UNITS	ENGLISH	PRO/E	MODELED BY:
DO NOT SCALE DRAWING	DRAWN BY V. SKUZA	DATE 07/19/05	TITLE METALIZED PLASTIC HOOD D-SUB BACKSHELLS-2 PIECE
	DESIGN ENGINEER A. BALI	07/19/05	MATERIAL CONTROL SPEC NUMBER
	DESIGN ENGINEERING MGR.		MATERIAL SPEC NUMBER FINISH PROJECT NUMBER C14766
THIS DOCUMENT IS THE PROPERTY OF CINCH. NEITHER THIS DOCUMENT NOR ANY OF THE INFORMATION CONTAINED IN IT MAY BE DUPLICATED OR DISCLOSED WITHOUT PRIOR WRITTEN CONSENT OF CINCH.	MFG. ENGINEERING S. ASAUSKAS	07/27/05	CAD FILE NUMBER DCH-X-003
	QUALITY ASSURANCE A. VAZQUEZ	07/27/05	CAGE IDENT NO. SIZE 71785 B
			DRAWING NUMBER DCH-X-003
			SCALE 1:1
			SHEET 1 OF 1

8 7 6 5 4 3 2 1

D

D

C

C

B

B

A

A

8 7 6 5 4 3 2 1