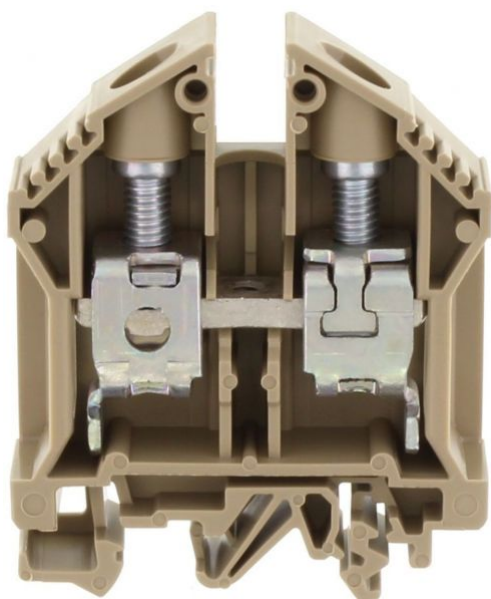


1052.2
RK 35 BG
RK 35 BG



Feed-through terminal, Screw connection, Mounting type: Mounting rail TS 35/7.5 and TS 32, Rated cross-section: 35 mm², Width: 16 mm, Colour: Beige

Business data

Product description	Feed-through terminal
Packaging unit	20
Quantity unit	PC
Weight per piece (not including packaging)	57.4
Weight per piece (including packaging)	60.25
Unit of weight	G
Customs number	85369010
Country of origin	DE

1052.2
RK 35 BG
RK 35 BG

Technical Data

Dimensions

Length	58 mm
Width	16 mm
Height TS 35/7.5	71.5 mm
Height TS 32	76 mm

Ratings

Rated voltage	800 V
Rated current	125 A
Rated cross-section	35 mm ²
Rated impulse voltage	8 kV
Overvoltage category	III
Contamination degree	3

1052.2 RK 35 BG RK 35 BG

Technical Data

Connection data

Connection principle	Screw connection
Connection position	Lateral
Connections	2
Number of terminals per level	2
Number of levels	1
Wire cross-section single-core (rigid) / stranded, min.	2.5 mm ²
Wire cross-section single core (rigid)/stranded, max.	50 mm ²
Wire cross-section stranded, min.	2.5 mm ²
Wire cross-section stranded, max.	35 mm ²
Wire cross-section stranded with wire-end ferrules, min.	2.5 mm ²
Wire cross-section stranded with wire-end ferrules, max.	35 mm ²
Wire cross-section AWG, min.	12
Wire cross-section AWG, max.	2
Stripping length	20 mm
Screw head	Slotted
Screw threading	M 6
Tightening torque, min.	2.5 Nm
Tightening torque, max.	5 Nm

1052.2 RK 35 BG RK 35 BG

Technical Data

Materials

Insulation housing	Polyamide 6.6
Flammability class UL 94	V-2
Working temperature, min.	-40 °C
Working temperature, max.	105 °C

Further technical data

Mounting type	Mounting rail TS 35/7.5 and TS 32
Gauge plug acc. to EN 60 947-1	B9
Number of cross-connection channels	1
End plate required	✓

1052.2
RK 35 BG
RK 35 BG

Approvals

Standards and regulations

EAC approval	TR ZU 004/2011
--------------	----------------

EAC approval granted	✓
----------------------	---

CSA approval

CSA approval	C22.2 No 158
--------------	--------------

CSA approval granted	✓
----------------------	---

CSA Usegroup C: rated voltage	600 V
-------------------------------	-------

CSA Usegroup C: rated current	100 A
-------------------------------	-------

CSA wire cross-section AWG, min.	12
----------------------------------	----

CSA wire cross-section AWG, max.	2
----------------------------------	---

CSA stripping length	20 mm
----------------------	-------

CSA torque, max.	5 Nm
------------------	------

CSA torque, min.	2.5 Nm
------------------	--------

1052.2 RK 35 BG RK 35 BG

Approvals

German Lloyd approval

GL approval	IEC 60947-7-1
GL approval granted	✓
GL rated voltage	750 V
GL rated current	135 A
GL rated cross-section	35 mm ²
GL environmental category	C

KEMA KEUR approval

KEMA KEUR approval	EN 60947-7-1
KEMA KEUR approval granted	✓
KEMA rated voltage	800 V
KEMA rated current	125 A
KEMA rated impulse voltage	8 kV
KEMA wire cross-section single core (rigid), min.	2.5 mm ²
KEMA wire cross-section single-core (rigid), max.	50 mm ²
KEMA wire cross-section stranded, min.	2.5 mm ²
KEMA wire cross-section stranded, max.	35 mm ²

1052.2
RK 35 BG
RK 35 BG

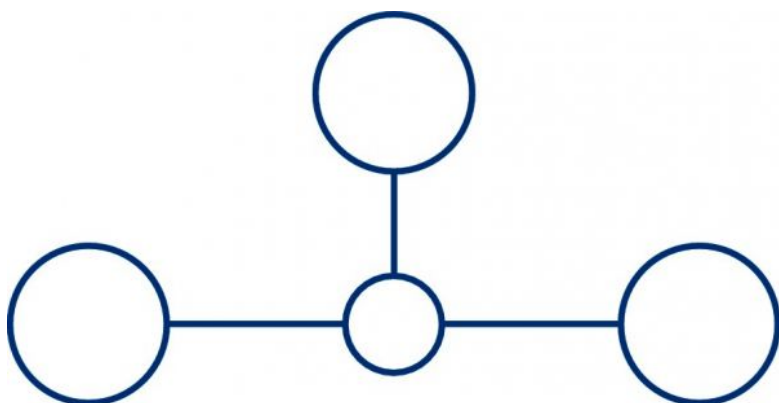
Approvals

UL Recognized

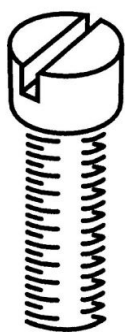
UL Recognized	UL 1059
UL Recognized granted	✓
UL Usegroup C: rated voltage	600 V
UL Usegroup C: rated current	110 A
UL wire cross-section single-core (rigid) AWG, min.	12
UL wire cross-section single-core (rigid) AWG, max.	2
UL wire cross-section stranded AWG, min.	12
UL wire cross-section stranded AWG, max.	2
UL torque	22 Lb In
UL wire material	Cu
UL factory wiring	✓
UL field wiring	✓

1052.2
RK 35 BG
RK 35 BG

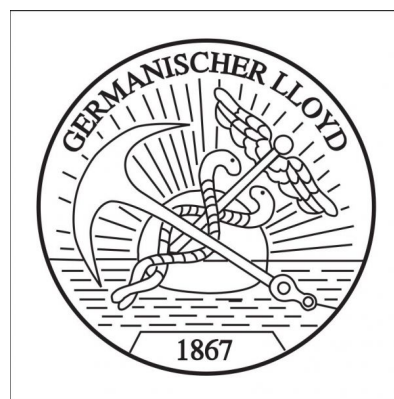
Media



M6



EAC



1052.2

RK 35 BG

RK 35 BG

Media



1052.2
RK 35 BG
RK 35 BG

Accessories

Cover



Cover, Length: 37.3 mm, Width: 16 mm, Colour: White

In general

Order number	Article designation	GTIN (EAN)	Packaging unit
2970.0	AD 1/16	4044211056995	20 PC



Cover, Length: 38 mm, Width: 12.9 mm, Colour: Yellow

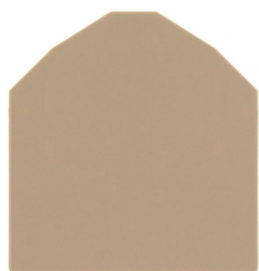
In general

Order number	Article designation	GTIN (EAN)	Packaging unit
2820.0	AD 1/16/B	4044211055462	20 PC

1052.2
RK 35 BG
RK 35 BG

Accessories

End plate

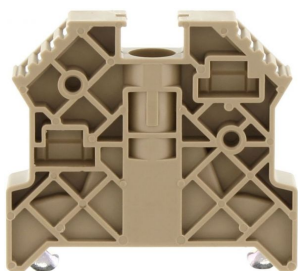


End plate, Width: 1.5 mm, Colour: Beige

In general

Order number	Article designation	GTIN (EAN)	Packaging unit
2116.2	AP 35	4044211049317	20 PC

End bracket



End stop, Mounting type: Mounting rail TS 35/7.5,
Width: 9.5 mm, Colour: Beige

In general

Order number	Article designation	GTIN (EAN)	Packaging unit
2828.0	ES 35/K/ST	4044211055547	50 PC

1052.2
RK 35 BG
RK 35 BG

Accessories

Cross connector



Cross-connector, No. of poles: 10, Mounting type: Can be screwed on, Width: 153 mm, Rated cross-section: 35 mm², Colour: natural

In general

Order number	Article designation	GTIN (EAN)	Packaging unit
2167.0	Q 10	4044211049898	10 PC



Cross-connector, No. of poles: 2, Mounting type: Can be screwed on, Width: 25 mm, Rated cross-section: 35 mm², Colour: natural

In general

Order number	Article designation	GTIN (EAN)	Packaging unit
2164.0	Q 2	4044211049867	20 PC

1052.2
RK 35 BG
RK 35 BG

Accessories

Cross connector



Cross-connector, No. of poles: 3, Mounting type: Can be screwed on, Width: 41 mm, Rated cross-section: 35 mm², Colour: natural

In general

Order number	Article designation	GTIN (EAN)	Packaging unit
2165.0	Q 3	4044211049874	20 PC



Cross-connector, No. of poles: 4, Mounting type: Can be screwed on, Width: 57 mm, Rated cross-section: 35 mm², Colour: natural

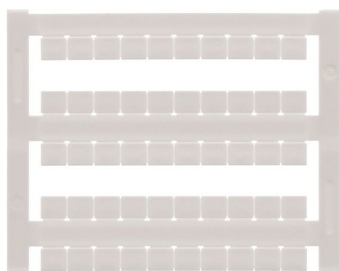
In general

Order number	Article designation	GTIN (EAN)	Packaging unit
2166.0	Q 4	4044211049881	10 PC

1052.2
RK 35 BG
RK 35 BG

Accessories

Quick-marking



Terminal marker / Pocket Maxicard, Length: 5 mm,
Width: 6 mm, Colour: White

In general

Order number	Article designation	GTIN (EAN)	Packaging unit
4702.7	PMC SB 6/50 WH	4044211089986	500 PC

Screw driver



Screwdriver with bare blade, Colour: Black-grey

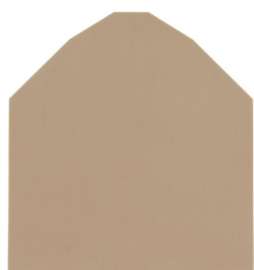
In general

Order number	Article designation	GTIN (EAN)	Packaging unit
1088.0	SDB 1,2x6,5	4044211014810	1 PC

1052.2
RK 35 BG
RK 35 BG

Accessories

Partition plate



Partition plate, Width: 1.5 mm, Colour: Beige

In general

Order number	Article designation	GTIN (EAN)	Packaging unit
2117.2	TW 35	4044211049355	20 PC
