

1111.2

SIK 10/Z/LED(RD)/115V DC/230V AC BG

SIK 10/Z/LED(RD)/115V DC/230V AC BG



Fuse-disconnect terminal, Screw connection, Mounting type: Mounting rail TS 35/7.5 and TS 32, Rated cross-section: 10 mm², Width: 10 mm, Colour: Beige

Business data

Product description	Fuse-disconnect terminal
Packaging unit	25
Quantity unit	PC
Weight per piece (not including packaging)	28
Weight per piece (including packaging)	30.56
Unit of weight	G
Customs number	85369010
Country of origin	DE

1111.2

SIK 10/Z/LED(RD)/115V DC/230V AC BG

SIK 10/Z/LED(RD)/115V DC/230V AC BG

Technical Data

Dimensions

Length	60 mm
--------	-------

Width	10 mm
-------	-------

Height TS 35/7.5	87 mm
------------------	-------

Height TS 32	83 mm
--------------	-------

Ratings

Rated voltage (determined by the illuminated display and fuse being used)	115 DC / 230 AC V
---	-------------------

Rated current (as fuse-disconnect terminal)	10 A
---	------

Rated cross-section	10 mm ²
---------------------	--------------------

Rated impulse voltage	8 kV
-----------------------	------

Overvoltage category	III
----------------------	-----

Contamination degree	3
----------------------	---

1111.2

SIK 10/Z/LED(RD)/115V DC/230V AC BG

SIK 10/Z/LED(RD)/115V DC/230V AC BG

Technical Data

Connection data

Connection principle	Screw connection
Connection position	Lateral
Connections	2 / extraction lever
Number of terminals per level	2
Number of levels	1
Wire cross-section single-core (rigid) / stranded, min.	0.2 mm ²
Wire cross-section single core (rigid)/stranded, max.	10 mm ²
Wire cross-section stranded, min.	0.2 mm ²
Wire cross-section stranded, max.	10 mm ²
Wire cross-section stranded with wire-end ferrules, min.	0.2 mm ²
Wire cross-section stranded with wire-end ferrules, max.	10 mm ²
Wire cross-section AWG, min.	22
Wire cross-section AWG, max.	8
Stripping length	12 mm
Screw head	Slotted
Screw threading	M 4
Tightening torque, min.	1.2 Nm
Tightening torque, max.	2 Nm

1111.2

SIK 10/Z/LED(RD)/115V DC/230V AC BG

SIK 10/Z/LED(RD)/115V DC/230V AC BG

Technical Data

Materials

Insulation housing Polyamide 6.6

Flammability class UL 94 V-2

Working temperature, min. -40 °C

Working temperature, max. 105 °C

Further technical data

Mounting type Mounting rail TS 35/7.5 and TS 32

Fuse size 6,3 x 25 / 6,3 x 32 mm

Gauge plug acc. to EN 60 947-1 A5

End plate required ✓

Voltage fuse 250 V

Voltage illuminated display 115 DC / 230 AC V

Cross-current via illuminated display < 5 mA

Version of fuse holder Swivelling

Type of display element (defect display) LED

Version of fuse cartridge G fuse 6.3 x 25 / 6.3 x 32

Supply voltage (defect display), min. 115

Supply voltage (defect display), max. 230

Type of voltage (defect display) AC/DC

1111.2

SIK 10/Z/LED(RD)/115V DC/230V AC BG

SIK 10/Z/LED(RD)/115V DC/230V AC BG

Technical Data

Further technical data

Colour of lamp

Red

1111.2

SIK 10/Z/LED(RD)/115V DC/230V AC BG

SIK 10/Z/LED(RD)/115V DC/230V AC BG

Approvals

Standards and regulations

EAC approval	TR ZU 004/2011
--------------	----------------

EAC approval granted	✓
----------------------	---

Nemko approval	EN 60947-7-3
----------------	--------------

Nemko approval granted	✓
------------------------	---

cUL Recognized

cUL Recognized	C22.2 No 158
----------------	--------------

cUL Recognized	✓
----------------	---

cUL Usegroup B: rated voltage	115DC / 230AC V
-------------------------------	-----------------

cUL Usegroup B: rated current	16 A
-------------------------------	------

cUL Usegroup C: rated voltage	115DC / 230AC V
-------------------------------	-----------------

cUL Usegroup C: rated current	16 A
-------------------------------	------

cUL wire cross-section single-core (rigid) AWG, min.	22
--	----

cUL wire cross-section single-core (rigid) AWG, max.	12
--	----

cUL wire cross-section stranded AWG, min.	22
---	----

cUL wire cross-section stranded AWG, max.	12
---	----

cUL torque	16 Nm
------------	-------

cUL wire material	Cu
-------------------	----

1111.2

SIK 10/Z/LED(RD)/115V DC/230V AC BG

SIK 10/Z/LED(RD)/115V DC/230V AC BG

Approvals

German Lloyd approval

GL approval	IEC 60947-7-3
GL approval granted	✓
GL rated voltage	500 V
GL rated current	10 A
GL wire cross-section single core (rigid), min.	10 mm ²

1111.2

SIK 10/Z/LED(RD)/115V DC/230V AC BG

SIK 10/Z/LED(RD)/115V DC/230V AC BG

Approvals

KEMA KEUR approval

KEMA KEUR approval	EN 60947-7-3
KEMA KEUR approval granted	✓
KEMA rated voltage	500 V
KEMA voltage fuse, max.	250 V
KEMA rated current	10 A
KEMA rated impulse voltage	8 kV
KEMA wire cross-section single core (rigid), min.	0.2 mm ²
KEMA wire cross-section single-core (rigid), max.	10 mm ²
KEMA wire cross-section stranded, min.	0.2 mm ²
KEMA wire cross-section stranded, max.	10 mm ²
KEMA torque, min.	1.2 Nm
KEMA torque, max.	2 Nm
KEMA fuse size	6,3 x 25 / 6,3 x 32 mm
KEMA power loss in singular arrangement - overload and short-circuit protection, max.	2,5 / 2,5 W / A
KEMA power loss in compound arrangement - overload and short-circuit protection, max.	2,5 / 2,5 W / A
KEMA power loss in singular arrangement - only short-circuit protection, max.	4 / 10 W / A
KEMA power loss in compound arrangement - only short-circuit protection, max.	2,5 / 2,5 W / A

1111.2

SIK 10/Z/LED(RD)/115V DC/230V AC BG

SIK 10/Z/LED(RD)/115V DC/230V AC BG

Approvals

UL Recognized

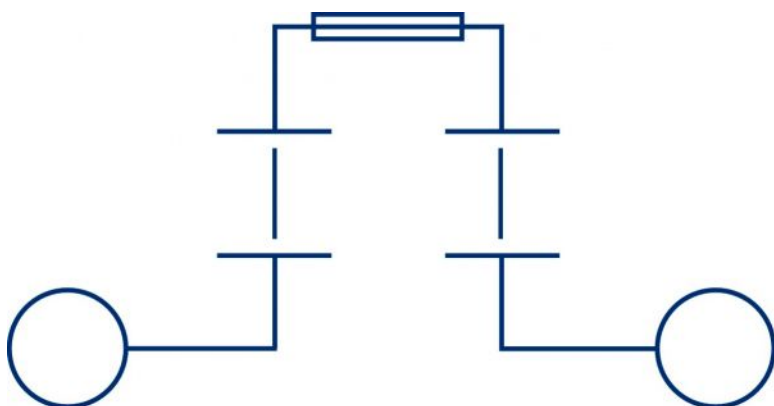
UL Recognized	UL 1059
UL Recognized granted	✓
UL Usegroup B: rated voltage	115 DC / 230 AC V
UL Usegroup B: rated current	16 A
UL Usegroup C: rated voltage	115 DC / 230 AC V
UL Usegroup C: rated current	16 A
UL wire cross-section single-core (rigid) AWG, min.	22
UL wire cross-section single-core (rigid) AWG, max.	12
UL wire cross-section stranded AWG, min.	22
UL wire cross-section stranded AWG, max.	12
UL torque	16 Lb In
UL wire material	Cu
UL factory wiring	✓
UL field wiring	✓

1111.2

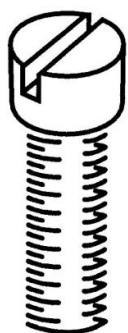
SIK 10/Z/LED(RD)/115V DC/230V AC BG

SIK 10/Z/LED(RD)/115V DC/230V AC BG

Media



M4



EAC



1111.2

SIK 10/Z/LED(RD)/115V DC/230V AC BG

SIK 10/Z/LED(RD)/115V DC/230V AC BG

Media



1111.2

SIK 10/Z/LED(RD)/115V DC/230V AC BG

SIK 10/Z/LED(RD)/115V DC/230V AC BG

Accessories

External insulated cross-connector



External insulated cross-connector, No. of poles: 10, Mounting type: Plug in, Width: 98.9 mm, Rated current: 57 A; Colour: Yellow

In general

Order number	Article designation	GTIN (EAN)	Packaging unit
3994.8	AQI 10/10/18	4044211130428	10 PC



External insulated cross-connector, No. of poles: 2, Mounting type: Plug in, Width: 18.1 mm, Rated current: 57 A; Colour: Yellow

In general

Order number	Article designation	GTIN (EAN)	Packaging unit
3991.8	AQI 2/10/18	4044211130398	50 PC

1111.2

SIK 10/Z/LED(RD)/115V DC/230V AC BG

SIK 10/Z/LED(RD)/115V DC/230V AC BG

Accessories

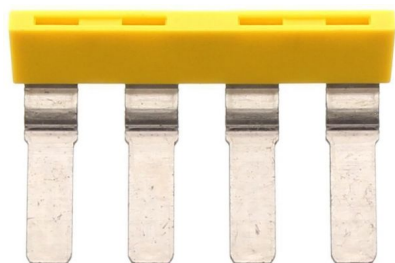
External insulated cross-connector



External insulated cross-connector, No. of poles: 3,
Mounting type: Plug in, Width: 28.2 mm, Rated
current: 57 A; Colour: Yellow

In general

Order number	Article designation	GTIN (EAN)	Packaging unit
3992.8	AQI 3/10/18	4044211130404	50 PC



External insulated cross-connector, No. of poles: 4,
Mounting type: Plug in, Width: 38.3 mm, Rated
current: 57 A; Colour: Yellow

In general

Order number	Article designation	GTIN (EAN)	Packaging unit
3993.8	AQI 4/10/18	4044211130411	50 PC

1111.2

SIK 10/Z/LED(RD)/115V DC/230V AC BG

SIK 10/Z/LED(RD)/115V DC/230V AC BG

Accessories

External insulated cross-connector

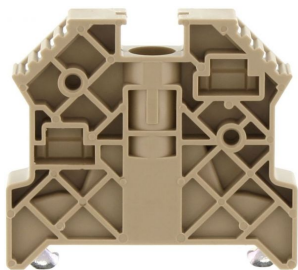


External insulated cross-connector, No. of poles: 50, Mounting type: Plug in, Rated current: 57 A; Colour: Yellow

In general

Order number	Article designation	GTIN (EAN)	Packaging unit
3995.8	AQI 50/10/18	4044211137526	1 PC

End bracket



End stop, Mounting type: Mounting rail TS 35/7.5, Width: 9.5 mm, Colour: Beige

In general

Order number	Article designation	GTIN (EAN)	Packaging unit
2828.0	ES 35/K/ST	4044211055547	50 PC

1111.2

SIK 10/Z/LED(RD)/115V DC/230V AC BG

SIK 10/Z/LED(RD)/115V DC/230V AC BG

Accessories

Contact sleeve

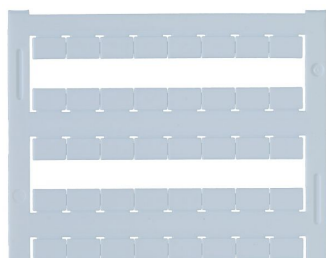


Solid link, Colour: natural

In general

Order number	Article designation	GTIN (EAN)	Packaging unit
2497.0	KH 63 f. SIK 10/Z	4044211080976	50 PC

Quick-marking



Terminal marker / Pocket Maxicard, Length: 5 mm,
Width: 8 mm, Colour: White

In general

Order number	Article designation	GTIN (EAN)	Packaging unit
9323.7	PMC SB 8/40 WH	4044211129231	400 PC

1111.2

SIK 10/Z/LED(RD)/115V DC/230V AC BG

SIK 10/Z/LED(RD)/115V DC/230V AC BG

Accessories

Screw driver



Screwdriver with bare blade, Colour: Black-grey

In general

Order number	Article designation	GTIN (EAN)	Packaging unit
1087.0	SDB 0,8x4,0	4044211014803	1 PC
