

1122.5

RK 95 BU

RK 95 BU



Feed-through terminal, Screw connection, Mounting type: Mounting rail TS 35/7.5 and TS 32, Rated cross-section: 95 mm², Width: 25 mm, Colour: Blue

Business data

| Product description | Feed-through terminal |
|--|-----------------------|
| Packaging unit | 10 |
| Quantity unit | PC |
| Weight per piece (not including packaging) | 179 |
| Weight per piece (including packaging) | 189.6 |
| Unit of weight | G |
| Customs number | 85369010 |
| Country of origin | DE |

1122.5

RK 95 BU

RK 95 BU

Technical Data

Dimensions

| | |
|------------------|---------|
| Length | 84 mm |
| Width | 25 mm |
| Height TS 35/7.5 | 88.5 mm |
| Height TS 32 | 94 mm |

Ratings

| | |
|-----------------------|--------------------|
| Rated voltage | 1000 V |
| Rated current | 232 A |
| Rated cross-section | 95 mm ² |
| Rated impulse voltage | 8 kV |
| Overvoltage category | III |
| Contamination degree | 3 |

1122.5

RK 95 BU

RK 95 BU

Technical Data

Connection data

| | |
|--|--------------------|
| Connection principle | Screw connection |
| Connection position | Lateral |
| Connections | 2 |
| Number of terminals per level | 2 |
| Number of levels | 1 |
| Wire cross-section single-core (rigid) / stranded, min. | 25 mm ² |
| Wire cross-section single core (rigid)/stranded, max. | 95 mm ² |
| Wire cross-section stranded, min. | 25 mm ² |
| Wire cross-section stranded, max. | 95 mm ² |
| Wire cross-section stranded with wire-end ferrules, min. | 25 mm ² |
| Wire cross-section stranded with wire-end ferrules, max. | 95 mm ² |
| Wire cross-section AWG, min. | 2 |
| Wire cross-section AWG, max. | 4/0 |
| Stripping length | 30 mm |
| Screw head | Inner hex (Allen) |
| Screw threading | M 8 |
| Tightening torque, min. | 6 Nm |
| Tightening torque, max. | 12 Nm |

1122.5

RK 95 BU

RK 95 BU

Technical Data

Materials

| | |
|--------------------|---------------|
| Insulation housing | Polyamide 6.6 |
|--------------------|---------------|

| | |
|--------------------------|-----|
| Flammability class UL 94 | V-2 |
|--------------------------|-----|

| | |
|---------------------------|--------|
| Working temperature, min. | -40 °C |
|---------------------------|--------|

| | |
|---------------------------|--------|
| Working temperature, max. | 105 °C |
|---------------------------|--------|

Further technical data

| | |
|---------------|-----------------------------------|
| Mounting type | Mounting rail TS 35/7.5 and TS 32 |
|---------------|-----------------------------------|

| | |
|--------------------------------|-----|
| Gauge plug acc. to EN 60 947-1 | B12 |
|--------------------------------|-----|

| | |
|-------------------|---------------|
| Banded wire up to | 16,6 x 6,0 mm |
|-------------------|---------------|

1122.5

RK 95 BU

RK 95 BU

Approvals

Standards and regulations

| | |
|--------------|----------------|
| EAC approval | TR ZU 004/2011 |
|--------------|----------------|

| | |
|----------------------|---|
| EAC approval granted | ✓ |
|----------------------|---|

CSA approval

| | |
|--------------|--------------|
| CSA approval | C22.2 No 158 |
|--------------|--------------|

| | |
|----------------------|---|
| CSA approval granted | ✓ |
|----------------------|---|

| | |
|-------------------------------|-------|
| CSA Usegroup C: rated voltage | 600 V |
|-------------------------------|-------|

| | |
|-------------------------------|-------|
| CSA Usegroup C: rated current | 230 A |
|-------------------------------|-------|

| | |
|----------------------------------|---|
| CSA wire cross-section AWG, min. | 2 |
|----------------------------------|---|

| | |
|----------------------------------|-----|
| CSA wire cross-section AWG, max. | 4/0 |
|----------------------------------|-----|

| | |
|----------------------|-------|
| CSA stripping length | 30 mm |
|----------------------|-------|

CSAus approval

| | |
|----------------|---------|
| CSAus approval | UL 1059 |
|----------------|---------|

| | |
|------------------------|---|
| CSAus approval granted | ✓ |
|------------------------|---|

| | |
|---------------------------------|-------|
| CSAus Usegroup C: rated voltage | 600 V |
|---------------------------------|-------|

| | |
|---------------------------------|-------|
| CSAus Usegroup C: rated current | 230 A |
|---------------------------------|-------|

| | |
|------------------------------------|---|
| CSAus wire cross-section AWG, min. | 2 |
|------------------------------------|---|

1122.5

RK 95 BU

RK 95 BU

Approvals

CSAus approval

| | |
|------------------------------------|-------|
| CSAus wire cross-section AWG, max. | 4/0 |
| CSAus stripping length | 30 mm |

German Lloyd approval

| | |
|---------------------------|--------------------|
| GL approval | IEC 60947-7-1 |
| GL approval granted | ✓ |
| GL rated voltage | 600 V |
| GL rated current | 230 A |
| GL rated cross-section | 95 mm ² |
| GL environmental category | C |

1122.5

RK 95 BU

RK 95 BU

Approvals

KEMA KEUR approval

| | |
|---|--------------------|
| KEMA KEUR approval | EN 60947-7-1 |
| KEMA KEUR approval granted | ✓ |
| KEMA rated voltage | 1000 V |
| KEMA rated current | 232 A |
| KEMA rated impulse voltage | 12 kV |
| KEMA wire cross-section single core (rigid), min. | 25 mm ² |
| KEMA wire cross-section single-core (rigid), max. | 95 mm ² |
| KEMA wire cross-section stranded, min. | 25 mm ² |
| KEMA wire cross-section stranded, max. | 95 mm ² |
| KEMA stripping length | 30 mm |
| KEMA torque, min. | 8 Nm |
| KEMA torque, max. | 12 Nm |

1122.5

RK 95 BU

RK 95 BU

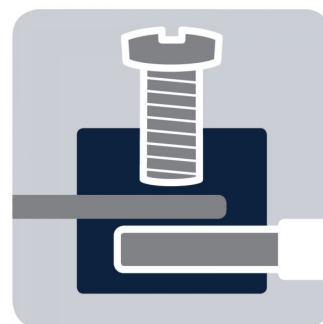
Approvals

UL Recognized

| | |
|---|----------|
| UL Recognized | UL 1059 |
| UL Recognized granted | ✓ |
| UL Usegroup B: rated voltage | 600 V |
| UL Usegroup B: rated current | 230 A |
| UL Usegroup C: rated voltage | 600 V |
| UL Usegroup C: rated current | 230 A |
| UL wire cross-section single-core (rigid) AWG, min. | 2 |
| UL wire cross-section single-core (rigid) AWG, max. | 4/0 |
| UL wire cross-section stranded AWG, min. | 2 |
| UL wire cross-section stranded AWG, max. | 4/0 |
| UL torque | 89 Lb In |
| UL wire material | Cu |
| UL factory wiring | ✓ |

1122.5
RK 95 BU
RK 95 BU

Media



M8



EAC



1122.5

RK 95 BU

RK 95 BU

Media



1122.5
RK 95 BU
RK 95 BU

Accessories

Cover

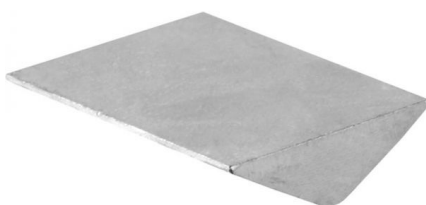


Cover, Length: 59 mm, Width: 15 mm, Colour: Yellow

In general

| Order number | Article designation | GTIN (EAN) | Packaging unit |
|--------------|---------------------|---------------|----------------|
| 2804.0 | AD 1/95/B | 4044211055356 | 20 PC |

Insertion profile



Inlay plate, Colour: natural

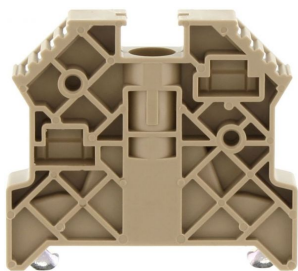
In general

| Order number | Article designation | GTIN (EAN) | Packaging unit |
|--------------|---------------------|---------------|----------------|
| 2275.0 | EP 95 | 4044211050825 | 10 PC |

1122.5
RK 95 BU
RK 95 BU

Accessories

End bracket



End stop, Mounting type: Mounting rail TS 35/7.5,
Width: 9.5 mm, Colour: Beige

In general

| Order number | Article designation | GTIN (EAN) | Packaging unit |
|--------------|---------------------|---------------|----------------|
| 2828.0 | ES 35/K/ST | 4044211055547 | 50 PC |

Allan key



Inner hex key with bare blade

In general

| Order number | Article designation | GTIN (EAN) | Packaging unit |
|--------------|---------------------|---------------|----------------|
| 2772.0 | ISKS 6 | 4044211055028 | 1 PC |

1122.5
RK 95 BU
RK 95 BU

Accessories

Measurement pick-off terminal

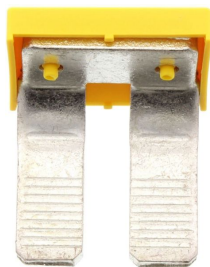


Measurement pick-off terminal, Screw connection,
Mounting type: On base, Rated cross-section: 10 mm²,
Width: 10 mm, Colour: Beige

In general

| Order number | Article designation | GTIN (EAN) | Packaging unit |
|--------------|---------------------|---------------|----------------|
| 1123.2 | MAG 95 | 4044211080938 | 10 PC |

Insulated cross connector



External insulated cross-connector, No. of poles: 2,
Mounting type: Plug in, Width: 44.86 mm, Rated
current: 232 A; Colour: Yellow

In general

| Order number | Article designation | GTIN (EAN) | Packaging unit |
|--------------|---------------------|---------------|----------------|
| 2765.2 | AQI 2/95 | 4044211054953 | 5 PC |

1122.5
RK 95 BU
RK 95 BU

Accessories

Insulated cross connector

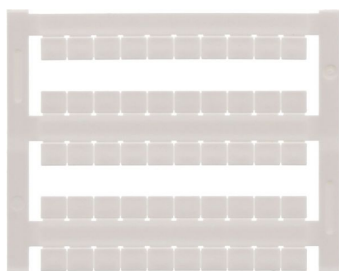


External insulated cross-connector, No. of poles: 3,
Mounting type: Plug in, Width: 70.44 mm, Rated
current: 232 A; Colour: Yellow

In general

| Order number | Article designation | GTIN (EAN) | Packaging unit |
|--------------|---------------------|---------------|----------------|
| 2766.2 | AQI 3/95 | 4044211054960 | 5 PC |

Quick-marking



Terminal marker / Pocket Maxicard, Length: 5 mm,
Width: 6 mm, Colour: White

In general

| Order number | Article designation | GTIN (EAN) | Packaging unit |
|--------------|---------------------|---------------|----------------|
| 4702.7 | PMC SB 6/50 WH | 4044211089986 | 500 PC |
