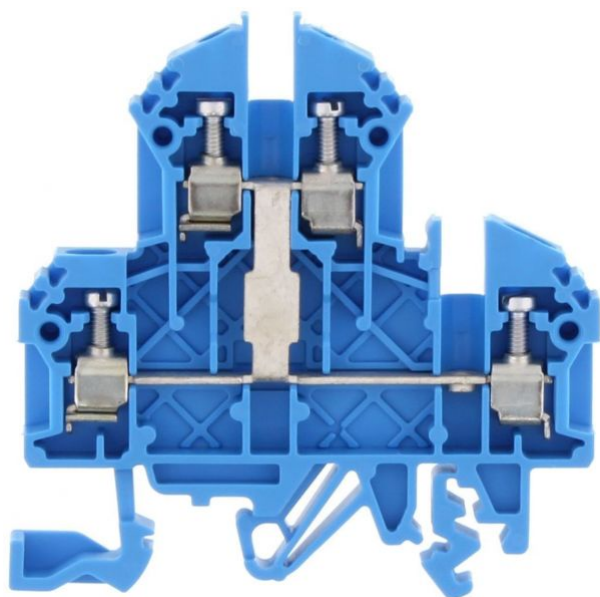


1209.5

RKD 2,5/SV BU

RKD 2,5/SV BU



M2.5



Double-level terminal, Screw connection, Mounting type: Mounting rail TS 35/7.5 and TS 32, Rated cross-section: 2.5 mm², Width: 5 mm, Colour: Blue

Business data

| | |
|--|-----------------------|
| Product description | Double-level terminal |
| Packaging unit | 100 |
| Quantity unit | PC |
| Weight per piece (not including packaging) | 11 |
| Weight per piece (including packaging) | 11.7 |
| Unit of weight | G |
| Customs number | 85369010 |
| Country of origin | DE |

1209.5

RKD 2,5/SV BU

RKD 2,5/SV BU

Technical Data

Dimensions

| | |
|--------|---------|
| Length | 60.2 mm |
|--------|---------|

| | |
|-------|------|
| Width | 5 mm |
|-------|------|

| | |
|------------------|-------|
| Height TS 35/7.5 | 61 mm |
|------------------|-------|

| | |
|--------------|---------|
| Height TS 32 | 65.5 mm |
|--------------|---------|

Ratings

| | |
|---------------|-------|
| Rated voltage | 500 V |
|---------------|-------|

| | |
|---------------|------|
| Rated current | 24 A |
|---------------|------|

| | |
|---------------------|---------------------|
| Rated cross-section | 2.5 mm ² |
|---------------------|---------------------|

| | |
|-----------------------|------|
| Rated impulse voltage | 6 kV |
|-----------------------|------|

| | |
|----------------------|-----|
| Overvoltage category | III |
|----------------------|-----|

| | |
|----------------------|---|
| Contamination degree | 3 |
|----------------------|---|

1209.5

RKD 2,5/SV BU

RKD 2,5/SV BU

Technical Data

Connection data

| | |
|--|---------------------|
| Connection principle | Screw connection |
| Connection position | Lateral |
| Connections | 4 |
| Number of terminals per level | 2 |
| Number of levels | 2 |
| Levels internally bridged | ✓ |
| Wire cross-section single-core (rigid) / stranded, min. | 0.2 mm ² |
| Wire cross-section single core (rigid)/stranded, max. | 4 mm ² |
| Wire cross-section stranded, min. | 0.2 mm ² |
| Wire cross-section stranded, max. | 4 mm ² |
| Wire cross-section stranded with wire-end ferrules, min. | 0.2 mm ² |
| Wire cross-section stranded with wire-end ferrules, max. | 2.5 mm ² |
| Wire cross-section AWG, min. | 22 |
| Wire cross-section AWG, max. | 14 |
| Stripping length | 7 mm |
| Screw head | Slotted |
| Screw threading | M 2,5 |
| Tightening torque, min. | 0.4 Nm |
| Tightening torque, max. | 0.8 Nm |

1209.5

RKD 2,5/SV BU

RKD 2,5/SV BU

Technical Data

Materials

| | |
|--------------------|---------------|
| Insulation housing | Polyamide 6.6 |
|--------------------|---------------|

| | |
|--------------------------|-----|
| Flammability class UL 94 | V-2 |
|--------------------------|-----|

| | |
|---------------------------|--------|
| Working temperature, min. | -40 °C |
|---------------------------|--------|

| | |
|---------------------------|--------|
| Working temperature, max. | 105 °C |
|---------------------------|--------|

Further technical data

| | |
|---------------|-----------------------------------|
| Mounting type | Mounting rail TS 35/7.5 and TS 32 |
|---------------|-----------------------------------|

| | |
|--------------------------------|----|
| Gauge plug acc. to EN 60 947-1 | A3 |
|--------------------------------|----|

| | |
|-------------------------------------|---|
| Number of cross-connection channels | 1 |
|-------------------------------------|---|

| | |
|--------------------|---|
| End plate required | ✓ |
|--------------------|---|

| | |
|---------------------------------|---|
| Number of test pick-off options | 1 |
|---------------------------------|---|

1209.5

RKD 2,5/SV BU

RKD 2,5/SV BU

Approvals

KEMA KEUR approval

| | |
|---|---------------------|
| KEMA KEUR approval | EN 60947-7-1 |
| KEMA KEUR approval granted | ✓ |
| KEMA rated voltage | 500 V |
| KEMA rated current | 24 A |
| KEMA rated impulse voltage | 6 kV |
| KEMA wire cross-section single core (rigid), min. | 0.2 mm ² |
| KEMA wire cross-section single-core (rigid), max. | 4 mm ² |
| KEMA wire cross-section stranded, min. | 0.2 mm ² |
| KEMA wire cross-section stranded, max. | 4 mm ² |

1209.5

RKD 2,5/SV BU

RKD 2,5/SV BU

Approvals

UL Recognized

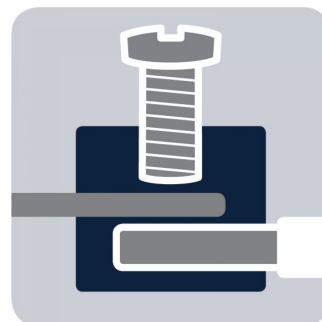
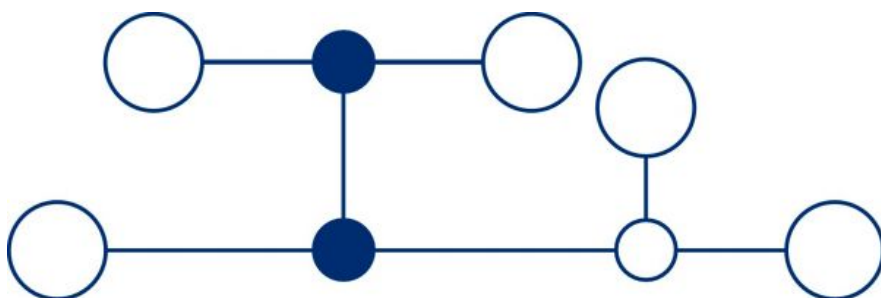
| | |
|---|-----------|
| UL Recognized | UL 1059 |
| UL Recognized granted | ✓ |
| UL Usegroup C: rated voltage | 300 V |
| UL Usegroup C: rated current | 20 A |
| UL wire cross-section single-core (rigid) AWG, min. | 22 |
| UL wire cross-section single-core (rigid) AWG, max. | 12 |
| UL wire cross-section stranded AWG, min. | 22 |
| UL wire cross-section stranded AWG, max. | 12 |
| UL torque | 5.3 Lb In |
| UL wire material | Cu |
| UL factory wiring | ✓ |
| UL field wiring | ✓ |

1209.5

RKD 2,5/SV BU

RKD 2,5/SV BU

Media



M2.5



RA®

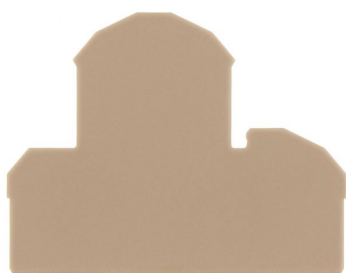
1209.5

RKD 2,5/SV BU

RKD 2,5/SV BU

Accessories

End plate



End plate, Width: 1.5 mm, Colour: Beige

In general

| Order number | Article designation | GTIN (EAN) | Packaging unit |
|--------------|---------------------|---------------|----------------|
| 2101.2 | AP 4 | 4044211151652 | 20 PC |

Insulation plate



Insulation plate, Colour: Beige

In general

| Order number | Article designation | GTIN (EAN) | Packaging unit |
|--------------|---------------------|---------------|----------------|
| 2566.2 | TRS 3 | 4044211053567 | 100 PC |

1209.5

RKD 2,5/SV BU

RKD 2,5/SV BU

Accessories

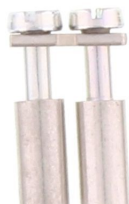
Cross connector



Cross-connector, No. of poles: 10, Mounting type: Can be screwed on, Width: 49.9 mm, Rated cross-section: 2.5 mm², Colour: natural

In general

| Order number | Article designation | GTIN (EAN) | Packaging unit |
|--------------|---------------------|---------------|----------------|
| 2570.0 | Q 10 | 4044211053604 | 10 PC |



Cross-connector, No. of poles: 2, Mounting type: Can be screwed on, Width: 9.1 mm, Rated cross-section: 2.5 mm², Colour: natural

In general

| Order number | Article designation | GTIN (EAN) | Packaging unit |
|--------------|---------------------|---------------|----------------|
| 2567.0 | Q 2 | 4044211053574 | 50 PC |

1209.5

RKD 2,5/SV BU

RKD 2,5/SV BU

Accessories

Cross connector



Cross-connector, No. of poles: 3, Mounting type: Can be screwed on, Width: 14.2 mm, Rated cross-section: 2.5 mm², Colour: natural

In general

| Order number | Article designation | GTIN (EAN) | Packaging unit |
|--------------|---------------------|---------------|----------------|
| 2568.0 | Q 3 | 4044211053581 | 50 PC |



Cross-connector, No. of poles: 4, Mounting type: Can be screwed on, Width: 19.3 mm, Rated cross-section: 2.5 mm², Colour: natural

In general

| Order number | Article designation | GTIN (EAN) | Packaging unit |
|--------------|---------------------|---------------|----------------|
| 2569.0 | Q 4 | 4044211053598 | 20 PC |

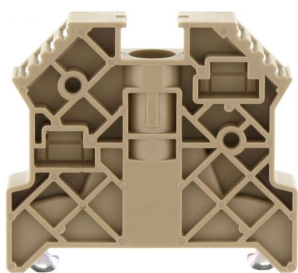
1209.5

RKD 2,5/SV BU

RKD 2,5/SV BU

Accessories

End bracket



End stop, Mounting type: Mounting rail TS 35/7.5,
Width: 9.5 mm, Colour: Beige

In general

| Order number | Article designation | GTIN (EAN) | Packaging unit |
|--------------|---------------------|---------------|----------------|
| 2828.0 | ES 35/K/ST | 4044211055547 | 50 PC |

Test adapter



Test adapter, Length: 37.3 mm, Pitch size: 5 mm,
Colour: Beige

In general

| Order number | Article designation | GTIN (EAN) | Packaging unit |
|--------------|---------------------|---------------|----------------|
| 2821.0 | TAD 5/1/S | 4044211055479 | 10 PC |

1209.5

RKD 2,5/SV BU

RKD 2,5/SV BU

Accessories

Screw driver

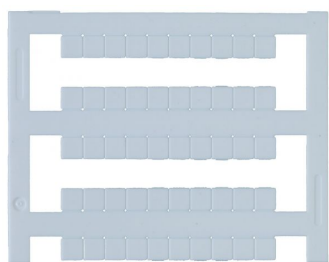


Screwdriver with bare blade, Colour: Black-grey

In general

| Order number | Article designation | GTIN (EAN) | Packaging unit |
|--------------|---------------------|---------------|----------------|
| 1085.0 | SDB 0,5x3,0 | 4044211014643 | 1 PC |

Quick-marking



Terminal marker / Pocket Maxicard, Length: 5 mm,
Width: 5 mm, Colour: White

In general

| Order number | Article designation | GTIN (EAN) | Packaging unit |
|--------------|---------------------|---------------|----------------|
| 4600.7 | PMC SB 5/50 WH | 4044211088903 | 500 PC |