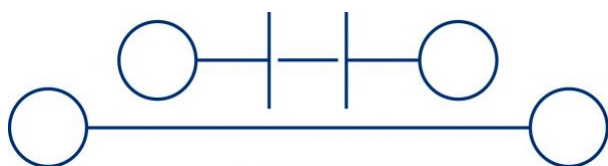


1383.5

STKD 1/K BU

STKD 1/K BU



Disconnect terminal, Screw connection, Mounting type: Mounting rail TS 35/7.5 and TS 32, Rated cross-section: 4 mm², Width: 8 mm, Colour: Blue

Business data

Product description	Disconnect terminal
Packaging unit	50
Quantity unit	PC
Weight per piece (not including packaging)	21.6
Weight per piece (including packaging)	23.5
Unit of weight	G
Customs number	85369010
Country of origin	DE

1383.5

STKD 1/K BU

STKD 1/K BU

Technical Data

Dimensions

Length	67 mm
Width	8 mm
Height TS 35/7.5	55.5 mm
Height TS 32	60 mm

Ratings

Rated voltage	500 V
Rated current	6,3 A
Rated cross-section	4 mm ²
Rated impulse voltage	6 kV
Overvoltage category	III
Contamination degree	3

1383.5

STKD 1/K BU

STKD 1/K BU

Technical Data

Connection data

Connection principle	Screw connection
Connection position	Lateral
Connections	2 + 2
Number of terminals per level	2
Number of levels	2
Wire cross-section single-core (rigid) / stranded, min.	0.2 mm ²
Wire cross-section single core (rigid)/stranded, max.	4 mm ²
Wire cross-section stranded, min.	0.2 mm ²
Wire cross-section stranded, max.	4 mm ²
Wire cross-section stranded with wire-end ferrules, min.	0.2 mm ²
Wire cross-section stranded with wire-end ferrules, max.	2.5 mm ²
Wire cross-section AWG, min.	22
Wire cross-section AWG, max.	12
Stripping length	9 mm
Screw head	Slotted
Screw threading	M 3
Tightening torque, min.	0.5 Nm
Tightening torque, max.	1 Nm

1383.5

STKD 1/K BU

STKD 1/K BU

Technical Data

Materials

Insulation housing	Polyamide 6.6
--------------------	---------------

Flammability class UL 94	V-2
--------------------------	-----

Working temperature, min.	-40 °C
---------------------------	--------

Working temperature, max.	105 °C
---------------------------	--------

Further technical data

Mounting type	Mounting rail TS 35/7.5 and TS 32
---------------	-----------------------------------

Gauge plug acc. to EN 60 947-1	A4
--------------------------------	----

End plate required	✓
--------------------	---

Version of lengthwise partition	Swivelling
---------------------------------	------------

1383.5

STKD 1/K BU

STKD 1/K BU

Approvals

CSA approval

CSA approval	C22.2 No 158
CSA approval granted	✓
CSA Usegroup C: rated voltage	500 V
CSA Usegroup C: rated current	6,3 A
CSA wire cross-section AWG, min.	22
CSA wire cross-section AWG, max.	12
CSA stripping length	9 mm

CSAus approval

CSAus approval	UL 1059
CSAus approval granted	✓
CSAus Usegroup C: rated voltage	500 V
CSAus Usegroup C: rated current	6,3 A
CSAus wire cross-section AWG, min.	22
CSAus wire cross-section AWG, max.	12
CSAus stripping length	9 mm

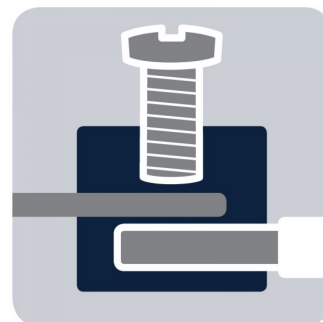
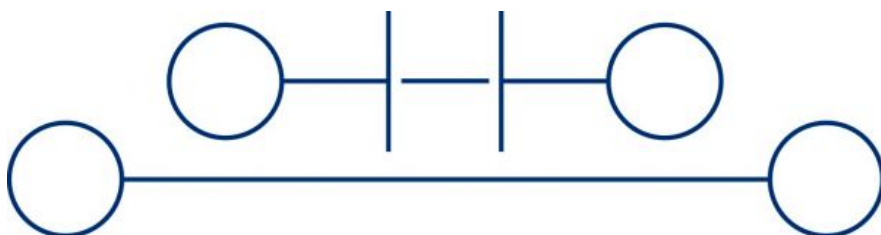
Datasheet

1383.5

STKD 1/K BU

STKD 1/K BU

Media



M3



1383.5

STKD 1/K BU

STKD 1/K BU

Accessories

End plate

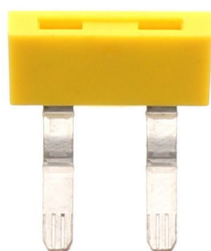


End plate, Width: 1.5 mm, Colour: Beige

In general

Order number	Article designation	GTIN (EAN)	Packaging unit
2186.2	AP/SI-2	4044211050061	50 PC

External insulated cross-connector



External insulated cross-connector, No. of poles: 2, Mounting type: Plug in, Width: 16.1 mm, Rated current: 27 A; Colour: Yellow

In general

Order number	Article designation	GTIN (EAN)	Packaging unit
2067.0	AQI 2/8/11	4044211048730	50 PC

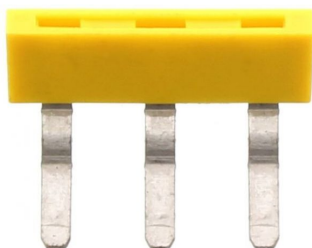
1383.5

STKD 1/K BU

STKD 1/K BU

Accessories

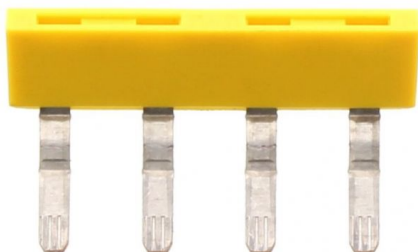
External insulated cross-connector



External insulated cross-connector, No. of poles: 3,
Mounting type: Plug in, Width: 24.2 mm, Rated
current: 27 A; Colour: Yellow

In general

Order number	Article designation	GTIN (EAN)	Packaging unit
2068.0	AQI 3/8/11	4044211048747	50 PC



External insulated cross-connector, No. of poles: 4,
Mounting type: Plug in, Width: 32.3 mm, Rated
current: 27 A; Colour: Yellow

In general

Order number	Article designation	GTIN (EAN)	Packaging unit
2069.0	AQI 4/8/11	4044211048754	50 PC

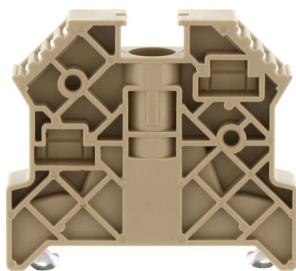
1383.5

STKD 1/K BU

STKD 1/K BU

Accessories

End bracket



End stop, Mounting type: Mounting rail TS 35/7.5,
Width: 9.5 mm, Colour: Beige

In general

Order number	Article designation	GTIN (EAN)	Packaging unit
2828.0	ES 35/K/ST	4044211055547	50 PC

Contact sleeve



Solid link, Colour: natural

In general

Order number	Article designation	GTIN (EAN)	Packaging unit
2470.0	KH 5	4044211052607	100 PC

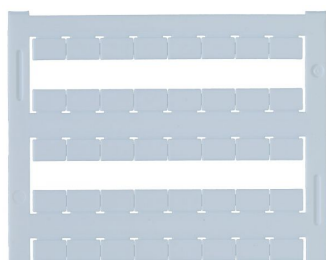
1383.5

STKD 1/K BU

STKD 1/K BU

Accessories

Quick-marking



Terminal marker / Pocket Maxicard, Length: 5 mm,
Width: 8 mm, Colour: White

In general

Order number	Article designation	GTIN (EAN)	Packaging unit
9323.7	PMC SB 8/40 WH	4044211129231	400 PC

Screw driver



Screwdriver with bare blade, Colour: Black-grey

In general

Order number	Article designation	GTIN (EAN)	Packaging unit
1086.0	SDB 0,6x3,5	4044211014797	1 PC
