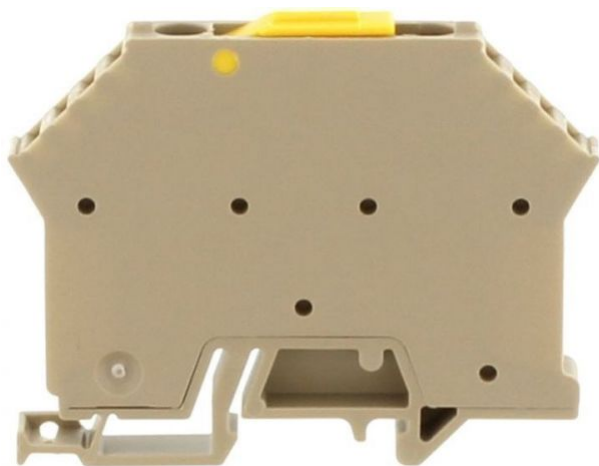


1392.2

TRK 1,5/15 BG

TRK 1,5/15 BG



Disconnect terminal, Screw connection, Mounting type: Mounting rail TS 15/5.5, Rated cross-section: 2.5 mm², Width: 6 mm, Colour: Beige

Business data

Product description	Disconnect terminal
Packaging unit	100
Quantity unit	PC
Weight per piece (not including packaging)	8.8
Weight per piece (including packaging)	9.57
Unit of weight	G
Customs number	85369010
Country of origin	DE

1392.2

TRK 1,5/15 BG

TRK 1,5/15 BG

Technical Data

Dimensions

Length	48 mm
Width	6 mm
Height TS 15/5.5	38.3 mm

Ratings

Rated voltage	400 V
Rated current	10 A
Rated cross-section	2.5 mm ²
Rated impulse voltage	4 kV
Overvoltage category	III
Contamination degree	3

1392.2

TRK 1,5/15 BG

TRK 1,5/15 BG

Technical Data

Connection data

Connection principle	Screw connection
Connection position	Lateral
Connections	2
Number of terminals per level	2
Number of levels	1
Wire cross-section single-core (rigid) / stranded, min.	0.2 mm ²
Wire cross-section single core (rigid)/stranded, max.	4 mm ²
Wire cross-section stranded, min.	0.2 mm ²
Wire cross-section stranded, max.	4 mm ²
Wire cross-section stranded with wire-end ferrules, min.	0.2 mm ²
Wire cross-section stranded with wire-end ferrules, max.	2.5 mm ²
Wire cross-section AWG, min.	22
Wire cross-section AWG, max.	12
Stripping length	8 mm
Screw head	Slotted
Screw threading	M 3
Tightening torque, min.	0.5 Nm
Tightening torque, max.	1 Nm

1392.2

TRK 1,5/15 BG

TRK 1,5/15 BG

Technical Data

Materials

Insulation housing	Polyamide 6.6
--------------------	---------------

Flammability class UL 94	V-2
--------------------------	-----

Working temperature, min.	-40 °C
---------------------------	--------

Working temperature, max.	105 °C
---------------------------	--------

Further technical data

Mounting type	TS 15
---------------	-------

Gauge plug acc. to EN 60 947-1	A4
--------------------------------	----

End plate required	✓
--------------------	---

Version of lengthwise partition	Swivelling
---------------------------------	------------

1392.2

TRK 1,5/15 BG

TRK 1,5/15 BG

Approvals

Standards and regulations

Nemko approval	EN 60947-7-1
----------------	--------------

Nemko approval granted	✓
------------------------	---

cUL Recognized

cUL Recognized	C22.2 No 158
----------------	--------------

cUL Recognized	✓
----------------	---

cUL Usegroup B: rated voltage	600 V
-------------------------------	-------

cUL Usegroup B: rated current	15 A
-------------------------------	------

cUL Usegroup C: rated voltage	600 V
-------------------------------	-------

cUL Usegroup C: rated current	15 A
-------------------------------	------

cUL wire cross-section single-core (rigid) AWG, min.	22
--	----

cUL wire cross-section single-core (rigid) AWG, max.	12
--	----

cUL wire cross-section stranded AWG, min.	22
---	----

cUL wire cross-section stranded AWG, max.	12
---	----

cUL torque	7 Nm
------------	------

cUL wire material	Cu
-------------------	----

1392.2

TRK 1,5/15 BG

TRK 1,5/15 BG

Approvals

KEMA KEUR approval

KEMA KEUR approval	EN 60947-7-1
KEMA KEUR approval granted	✓
KEMA rated voltage	400 V
KEMA rated current	10 A
KEMA rated impulse voltage	4 kV
KEMA wire cross-section single core (rigid), min.	0.2 mm ²
KEMA wire cross-section single-core (rigid), max.	4 mm ²
KEMA wire cross-section stranded, min.	0.2 mm ²
KEMA wire cross-section stranded, max.	4 mm ²

1392.2

TRK 1,5/15 BG

TRK 1,5/15 BG

Approvals

UL Recognized

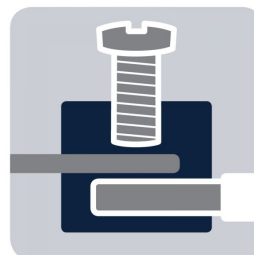
UL Recognized	UL 1059
UL Recognized granted	✓
UL Usegroup B: rated voltage	600 V
UL Usegroup B: rated current	15 A
UL Usegroup C: rated voltage	600 V
UL Usegroup C: rated current	15 A
UL wire cross-section single-core (rigid) AWG, min.	22
UL wire cross-section single-core (rigid) AWG, max.	12
UL wire cross-section stranded AWG, min.	22
UL wire cross-section stranded AWG, max.	12
UL torque	7 Lb In
UL wire material	Cu
UL factory wiring	✓
UL field wiring	✓

1392.2

TRK 1,5/15 BG

TRK 1,5/15 BG

Media



1392.2

TRK 1,5/15 BG

TRK 1,5/15 BG

Accessories

External insulated cross-connector



External insulated cross-connector, No. of poles: 2,
Mounting type: Plug in, Width: 10.8 mm, Rated
current: 27 A; Colour: Yellow

In general

Order number	Article designation	GTIN (EAN)	Packaging unit
2064.0	AQI 2/6/17	4044211048709	50 PC



External insulated cross-connector, No. of poles: 3,
Mounting type: Plug in, Width: 16.9 mm, Rated
current: 27 A; Colour: Yellow

In general

Order number	Article designation	GTIN (EAN)	Packaging unit
2065.0	AQI 3/6/17	4044211048716	50 PC

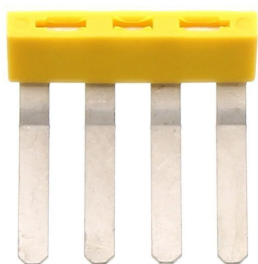
1392.2

TRK 1,5/15 BG

TRK 1,5/15 BG

Accessories

External insulated cross-connector



External insulated cross-connector, No. of poles: 4, Mounting type: Plug in, Width: 23 mm, Rated current: 27 A; Colour: Yellow

In general

Order number	Article designation	GTIN (EAN)	Packaging unit
2066.0	AQI 4/6/17	4044211048723	50 PC

End bracket



End stop, Mounting type: Mounting rail TS 15/5.5, Width: 7.5 mm, Colour: Beige

In general

Order number	Article designation	GTIN (EAN)	Packaging unit
2074.2	ES 15	4044211048822	50 PC

1392.2

TRK 1,5/15 BG

TRK 1,5/15 BG

Accessories

Test plug

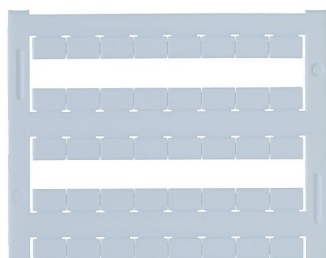


Test plug, Colour: Red

In general

Order number	Article designation	GTIN (EAN)	Packaging unit
2007.0	PS 2,3	4044211048105	20 PC

Quick-marking



Terminal marker / Pocket Maxicard, Length: 5 mm,
Width: 8 mm, Colour: White

In general

Order number	Article designation	GTIN (EAN)	Packaging unit
9323.7	PMC SB 8/40 WH	4044211129231	400 PC

1392.2

TRK 1,5/15 BG

TRK 1,5/15 BG

Accessories

Screw driver



Screwdriver with bare blade, Colour: Black-grey

In general

Order number	Article designation	GTIN (EAN)	Packaging unit
1086.0	SDB 0,6x3,5	4044211014797	1 PC
