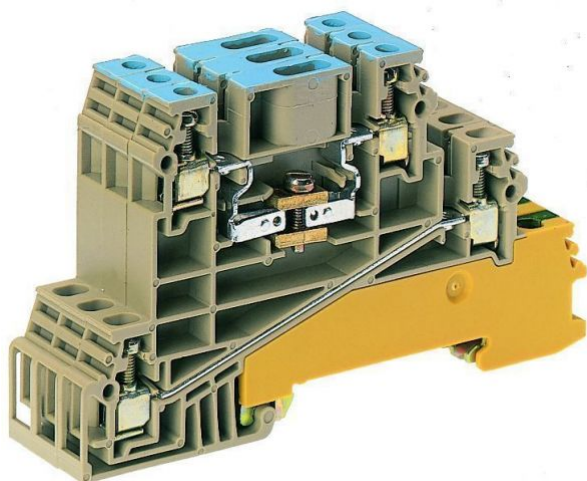


1448.2

DLI 2,5 B-W BG

DLI 2,5 B-W BG



M2.5



EAC

Three-wire installation terminal, Screw connection, Mounting type: Mounting rail TS 35/7.5, Rated cross-section: 2.5 mm<sup>2</sup>, Width: 18 mm, Colour: Beige

## Business data

|  |                                   |
|--|-----------------------------------|
| Product description                        | Three-wire installation terminals |
| Packaging unit                             | 16                                |
| Quantity unit                              | PC                                |
| Weight per piece (not including packaging) | 81.6                              |
| Weight per piece (including packaging)     | 86.25                             |
| Unit of weight                             | G                                 |
| Customs number                             | 85369010                          |
| Country of origin                          | DE                                |

1448.2

DLI 2,5 B-W BG

DLI 2,5 B-W BG

## Technical Data

---

### Dimensions

---

|                  |         |
|------------------|---------|
| Length           | 90.5 mm |
| Width            | 18 mm   |
| Height TS 35/7.5 | 53 mm   |

### Ratings

---

|                       |                     |
|-----------------------|---------------------|
| Rated voltage         | 400 V               |
| Rated current         | 24 A                |
| Rated cross-section   | 2.5 mm <sup>2</sup> |
| Rated impulse voltage | 4 kV                |
| Overvoltage category  | III                 |
| Contamination degree  | 3                   |

1448.2

DLI 2,5 B-W BG

DLI 2,5 B-W BG

## Technical Data

---

### Connection data

---

|  |                     |
|--|---------------------|
| Connection principle                                     | Screw connection    |
| Connection position                                      | Lateral             |
| Connections  | 15                  |
| Number of potentials                                     | 9                   |
| Wire cross-section single-core (rigid) / stranded, min.  | 0.2 mm <sup>2</sup> |
| Wire cross-section single core (rigid)/stranded, max.    | 4 mm <sup>2</sup>   |
| Wire cross-section stranded, min.                        | 0.2 mm <sup>2</sup> |
| Wire cross-section stranded, max.                        | 4 mm <sup>2</sup>   |
| Wire cross-section stranded with wire-end ferrules, min. | 0.2 mm <sup>2</sup> |
| Wire cross-section stranded with wire-end ferrules, max. | 2.5 mm <sup>2</sup> |
| Wire cross-section AWG, min.                             | 22                  |
| Wire cross-section AWG, max.                             | 14                  |
| Stripping length   | 8 mm                |
| Screw head   | Slotted             |
| Screw threading  | M 2,5               |
| Tightening torque, min.                                  | 0.4 Nm              |
| Tightening torque, max.                                  | 0.8 Nm              |
| N-function possible                                      | ✓                   |
| PE function is possible                                  | ✓                   |
| N partition slides available                             | ✓                   |

### Materials

---

|                           |               |
|---------------------------|---------------|
| Insulation housing        | Polyamide 6.6 |
| Flammability class UL 94  | V-2           |
| Working temperature, min. | -40 °C        |
| Working temperature, max. | 105 °C        |

### Further technical data

© CONTA-CLIP Verbindungstechnik GmbH | Otto-Hahn-Str. 7 | D-33161 Hövelhof  
Tel +49 (0) 52 57.98 33-0 | Fax +49 (0) 52 57.98 33-33 | E-Mail info@conta-clip.de | conta-clip.de

Mounting type

Creation date 08.06.2020 10:35:00  
Subject to technical modifications

Mounting rail TS 35/7,5

Gauge plug acc. to EN 60 947-1

A3

Further technical data

# Datasheet



Number of cross-connection channels 3

End plate required ✓

**DLI 2,5 B-W BG**  
**DLI 2,5 B-W BG**

## Technical Data

1448.2

DLI 2,5 B-W BG

DLI 2,5 B-W BG

## Approvals

---

### Standards and regulations

---

|              |                |
|--------------|----------------|
| EAC approval | TR ZU 004/2011 |
|--------------|----------------|

|                      |   |
|----------------------|---|
| EAC approval granted | ✓ |
|----------------------|---|

---

1448.2

DLI 2,5 B-W BG

DLI 2,5 B-W BG

Media

---



**M2.5**



**EAC**

1448.2

DLI 2,5 B-W BG

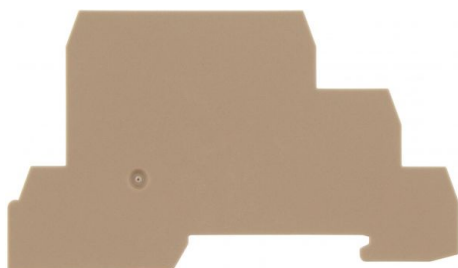
DLI 2,5 B-W BG

## Accessories

---

### End plate

---



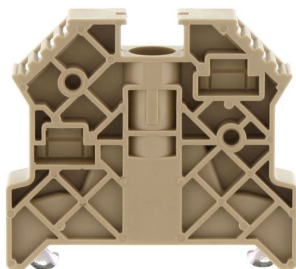
End plate, Width: 1.5 mm, Colour: Beige

### In general

| Order number | Article designation | GTIN (EAN)    | Packaging unit |
|--------------|---------------------|---------------|----------------|
| 2831.2       | AP 2,5/D            | 4044211055561 | 20 PC          |

### End bracket

---



End stop, Mounting type: Mounting rail TS 35/7.5,  
Width: 9.5 mm, Colour: Beige

### In general

| Order number | Article designation | GTIN (EAN)    | Packaging unit |
|--------------|---------------------|---------------|----------------|
| 2828.0       | ES 35/K/ST          | 4044211055547 | 50 PC          |

1448.2

DLI 2,5 B-W BG

DLI 2,5 B-W BG

## Accessories

---

### Cross connector

---



Cross-connector, No. of poles: 82, Mounting type: Screwable, Width: 500 mm, Rated cross-section: 2.5 mm<sup>2</sup>, Colour: natural

### In general

| Order number | Article designation | GTIN (EAN)    | Packaging unit |
|--------------|---------------------|---------------|----------------|
| 2154.0       | Q 0,5 m/82 Pole     | 4044211049751 | 1 PC           |

---



Cross-connector, No. of poles: 10, Mounting type: Can be screwed on, Width: 59.3 mm, Rated cross-section: 2.5 mm<sup>2</sup>, Colour: natural

### In general

| Order number | Article designation | GTIN (EAN)    | Packaging unit |
|--------------|---------------------|---------------|----------------|
| 2835.0       | Q 10                | 4044211055608 | 10 PC          |

---



1448.2

DLI 2,5 B-W BG

DLI 2,5 B-W BG

## Accessories

---

### Cross connector

---



Cross-connector, No. of poles: 2, Mounting type: Can be screwed on, Width: 10.5 mm, Rated cross-section: 2.5 mm<sup>2</sup>, Colour: natural

---

#### In general

| Order number | Article designation | GTIN (EAN)    | Packaging unit |
|--------------|---------------------|---------------|----------------|
| 2832.0       | Q 2                 | 4044211055578 | 50 PC          |

---



Cross-connector, No. of poles: 20, Mounting type: Can be screwed on, Width: 120.3 mm, Rated cross-section: 2.5 mm<sup>2</sup>, Colour: natural

---

#### In general

| Order number | Article designation | GTIN (EAN)    | Packaging unit |
|--------------|---------------------|---------------|----------------|
| 2836.0       | Q 20                | 4044211055615 | 10 PC          |

---

1448.2

DLI 2,5 B-W BG

DLI 2,5 B-W BG

## Accessories

---

### Cross connector

---



Cross-connector, No. of poles: 3, Mounting type: Can be screwed on, Width: 16.6 mm, Rated cross-section: 2.5 mm<sup>2</sup>, Colour: natural

### In general

| Order number | Article designation | GTIN (EAN)    | Packaging unit |
|--------------|---------------------|---------------|----------------|
| 2833.0       | Q 3                 | 4044211055585 | 50 PC          |

---



Cross-connector, No. of poles: 4, Mounting type: Can be screwed on, Width: 22.7 mm, Rated cross-section: 2.5 mm<sup>2</sup>, Colour: natural

### In general

| Order number | Article designation | GTIN (EAN)    | Packaging unit |
|--------------|---------------------|---------------|----------------|
| 2834.0       | Q 4                 | 4044211055592 | 20 PC          |

---

1448.2

DLI 2,5 B-W BG

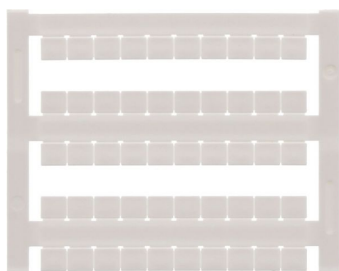
DLI 2,5 B-W BG

## Accessories

---

### Quick-marking

---



Terminal marker / Pocket Maxicard, Length: 5 mm,  
Width: 6 mm, Colour: White

### In general

| Order number | Article designation | GTIN (EAN)    | Packaging unit |
|--------------|---------------------|---------------|----------------|
| 4702.7       | PMC SB 6/50 WH      | 4044211089986 | 500 PC         |

### Screw driver

---



Screwdriver with bare blade, Colour: Black-grey

### In general

| Order number | Article designation | GTIN (EAN)    | Packaging unit |
|--------------|---------------------|---------------|----------------|
| 1085.0       | SDB 0,5x3,0         | 4044211014643 | 1 PC           |

1448.2

DLI 2,5 B-W BG

DLI 2,5 B-W BG

## Accessories

---

### Insulation plate

---



Insulation plate, Colour: Beige

### In general

---

| Order number | Article designation | GTIN (EAN)    | Packaging unit |
|--------------|---------------------|---------------|----------------|
| 2566.2       | TRS 3               | 4044211053567 | 100 PC         |

---