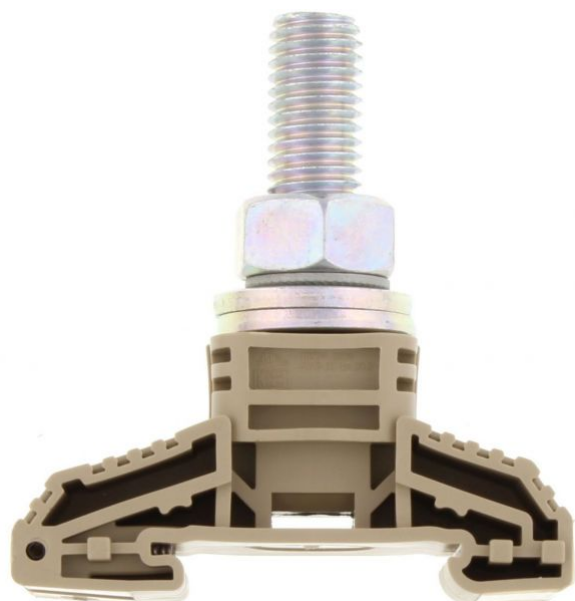


17004.2

HSK 120/M12 B BG

HSK 120/M12 B BG



High-power stud terminal, Stud connection, Mounting type: Mounting rail TS 35/7.5, Rated cross-section: 120 mm², Width: 32 mm, Colour: Beige

Business data

Product description	High-power stud terminal
Packaging unit	10
Quantity unit	PC
Weight per piece (not including packaging)	104.5
Weight per piece (including packaging)	114.39
Unit of weight	G
Customs number	85369010
Country of origin	DE

17004.2

HSK 120/M12 B BG

HSK 120/M12 B BG

Technical Data

Dimensions

Length	67 mm
--------	-------

Length with TW/ADH	67 mm
--------------------	-------

Width	32 mm
-------	-------

Height TS 35/7.5	73.5 mm
------------------	---------

Height TS 35/7.5 with TW/ADH	76 mm
------------------------------	-------

Ratings

Rated voltage	1000 V
---------------	--------

Rated current	269 A
---------------	-------

Rated cross-section	120 mm ²
---------------------	---------------------

Rated impulse voltage	8 kV
-----------------------	------

Overvoltage category	III
----------------------	-----

Contamination degree	3
----------------------	---

17004.2

HSK 120/M12 B BG

HSK 120/M12 B BG

Technical Data

Connection data

Connection principle	Stud connection
Connection position	Top
Connections	1
Number of terminals per level	1
Number of levels	1
Wire cross-section AWG, min.	10
Wire cross-section AWG, max.	250 kcmil
Bolt head	Hexagon
Bolt thread	M 10
Tightening torque, min.	14 Nm
Tightening torque, max.	31 Nm
Contact wire range	≤ 120 mm ²

Materials

Insulation housing	Polyamide 6.6
Flammability class UL 94	V-0
Working temperature, min.	-40 °C
Working temperature, max.	120 °C

17004.2

HSK 120/M12 B BG

HSK 120/M12 B BG

Technical Data

Further technical data

Mounting type	Mounting rail TS 35/7,5
Number of cross-connection channels	1
DIN 46234 / 1 cable lug per side, min.	6 mm ²
DIN 46234 / 1 cable lug per side, max.	120 mm ²
DIN 46234 / 2 cable lugs per side, min.	6 mm ²
DIN 46234 / 2 cable lugs per side, max.	120 mm ²
DIN 46235: 1 cable lug per side, max.	95 mm ²
DIN 46235: 1 cable lug per side, min.	10 mm ²
DIN 46235: 2 cable lugs per side, min.	10 mm ²
DIN 46235: 2 cable lugs per side, max.	95 mm ²

17004.2

HSK 120/M12 B BG

HSK 120/M12 B BG

Approvals

Standards and regulations

EAC approval	TR ZU 004/2011
--------------	----------------

EAC approval granted	✓
----------------------	---

CSA approval

CSA approval	C22.2 No 158
--------------	--------------

CSA approval granted	✓
----------------------	---

CSA Usegroup C: rated voltage	1000 V
-------------------------------	--------

CSA Usegroup C: rated current	220 A
-------------------------------	-------

CSA Usegroup D: rated voltage	1000 V
-------------------------------	--------

CSA Usegroup D: rated current	220 A
-------------------------------	-------

CSA wire cross-section AWG, max.	2/0
----------------------------------	-----

CSA torque, max.	20.3 Nm
------------------	---------

17004.2

HSK 120/M12 B BG

HSK 120/M12 B BG

Approvals

CSAus approval

CSAus approval	UL 1059
CSAus approval granted	✓
CSAus Usegroup C: rated voltage	1000 V
CSAus Usegroup C: rated current	220 A
CSAus Usegroup D: rated voltage	1000 V
CSAus Usegroup D: rated current	220 A
CSAus wire cross-section AWG, max.	2/0
CSAus torque, max.	20.3 Nm

cUL Recognized

cUL Recognized	C22.2 No 158
cUL Recognized	✓
cUL Usegroup E: rated voltage	1000 V
cUL Usegroup E: rated current	220 A
cUL wire cross-section AWG, max.	250 Kcmil
cUL torque, max.	20.3 Nm
cUL wire material	Cu

17004.2

HSK 120/M12 B BG

HSK 120/M12 B BG

Approvals

KEMA KEUR approval

KEMA KEUR approval	EN 60947-7-1
KEMA KEUR approval granted	✓
KEMA rated voltage	1000 V
KEMA rated current	269 A
KEMA rated impulse voltage	8 kV
KEMA wire cross-section (DIN 46234), min.	6 mm ²
KEMA wire cross-section (DIN 46234), max.	120 mm ²
KEMA wire cross-section (DIN 46235), min.	10 mm ²
KEMA wire cross-section (DIN 46235), max.	95 mm ²

UL Recognized

UL Recognized	UL 1059
UL Recognized granted	✓
UL Usegroup E: rated voltage	1000 V
UL Usegroup E: rated current	255 A
UL wire cross-section AWG, max.	250 Kcmil
UL torque, max.	179.7 Lb In.
UL wire material	Cu
UL factory wiring	✓

17004.2

HSK 120/M12 B BG

HSK 120/M12 B BG

Approvals

UL Recognized

UL field wiring

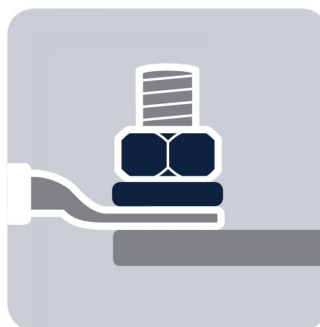
✓

17004.2

HSK 120/M12 B BG

HSK 120/M12 B BG

Media



EAC



17004.2

HSK 120/M12 B BG

HSK 120/M12 B BG

Accessories

Cover hood



Cover profile, Length: 156 mm, Width: 32 mm, Colour: Yellow

In general

Order number	Article designation	GTIN (EAN)	Packaging unit
17026.8	AD 120	4044211131715	20 PC

End bracket



End stop, Mounting type: Mounting rail TS 35/7.5, Width: 9.5 mm, Colour: Beige

In general

Order number	Article designation	GTIN (EAN)	Packaging unit
2828.0	ES 35/K/ST	4044211055547	50 PC

17004.2

HSK 120/M12 B BG

HSK 120/M12 B BG

Accessories

Cross connector



Cross-connector, No. of poles: 2, Mounting type: Can be screwed on, Width: 62 mm, Rated cross-section: 120 mm², Colour: natural

In general

Order number	Article designation	GTIN (EAN)	Packaging unit
17016.0	QS 2/120/12	4044211131616	10 PC



Cross-connector, No. of poles: 3, Mounting type: Can be screwed on, Width: 96 mm, Rated cross-section: 120 mm², Colour: natural

In general

Order number	Article designation	GTIN (EAN)	Packaging unit
17017.0	QS 3/120/12	4044211131623	10 PC

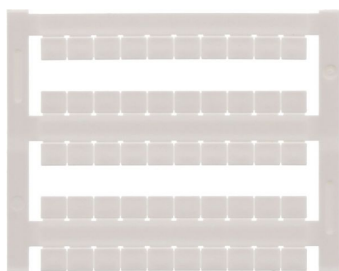
17004.2

HSK 120/M12 B BG

HSK 120/M12 B BG

Accessories

Quick-marking

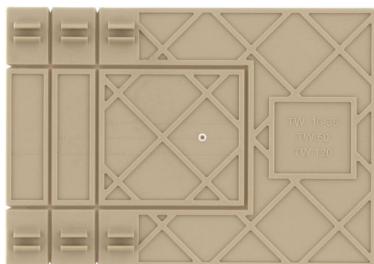


Terminal marker / Pocket Maxicard, Length: 5 mm,
Width: 6 mm, Colour: White

In general

Order number	Article designation	GTIN (EAN)	Packaging unit
4702.7	PMC SB 6/50 WH	4044211089986	500 PC

Partition plate



Partition plate, Width: 2 mm, Colour: Beige

In general

Order number	Article designation	GTIN (EAN)	Packaging unit
17018.2	TW 16-120	4044211131630	20 PC

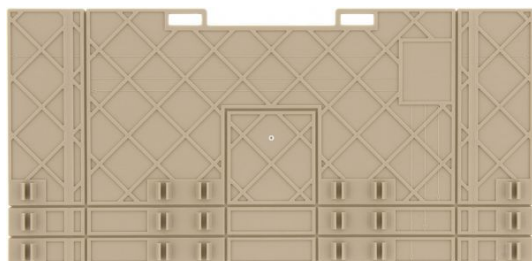
17004.2

HSK 120/M12 B BG

HSK 120/M12 B BG

Accessories

Partition plate



Partition plate, Width: 2 mm, Colour: Beige

In general

Order number	Article designation	GTIN (EAN)	Packaging unit
17022.2	TW 35-120/B/B	4044211131678	20 PC
