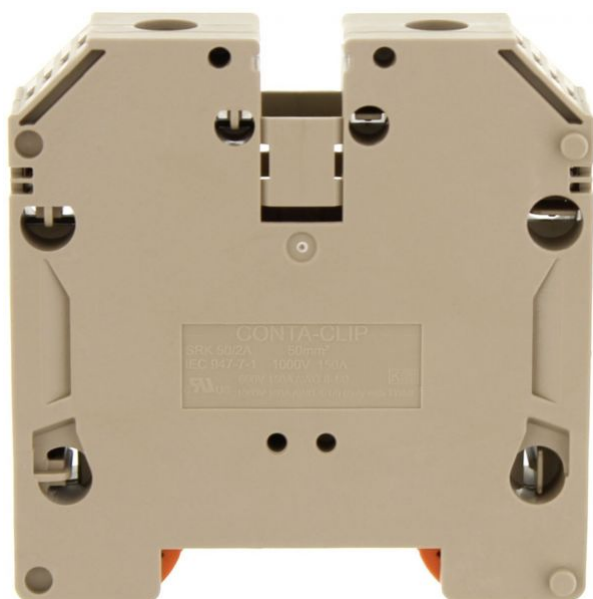


17156.2

SRK 50/2A BG

SRK 50/2A BG



M6



EAC



UL US

Feed-through terminal, Screw connection, Mounting type: Mounting rail TS 35/7.5, Rated cross-section: 50 mm², Width: 18.5 mm, Colour: Beige

Business data

Product description	Feed-through terminal
Packaging unit	10
Quantity unit	PC
Weight per piece (not including packaging)	101
Weight per piece (including packaging)	111
Unit of weight	G
Customs number	85369010
Country of origin	DE

17156.2

SRK 50/2A BG

SRK 50/2A BG

Technical Data

Dimensions

Length	72.5 mm
--------	---------

Width	18.5 mm
-------	---------

Height TS 35/7.5	74 mm
------------------	-------

Ratings

Rated voltage	1000 V
---------------	--------

Rated current	150 A
---------------	-------

Current load, max.	192 A
--------------------	-------

Rated cross-section	50 mm ²
---------------------	--------------------

Rated impulse voltage	8 kV
-----------------------	------

Overvoltage category	III
----------------------	-----

Contamination degree	3
----------------------	---

17156.2

SRK 50/2A BG

SRK 50/2A BG

Technical Data

Connection data

Connection principle	Screw connection
Connection position	Lateral
Connections	2
Number of terminals per level	2
Number of levels	1
Wire cross-section single-core (rigid) / stranded, min.	10 mm ²
Wire cross-section single core (rigid)/stranded, max.	70 mm ²
Wire cross-section stranded, min.	10 mm ²
Wire cross-section stranded, max.	50 mm ²
Wire cross-section stranded with wire-end ferrules, min.	10 mm ²
Wire cross-section stranded with wire-end ferrules, max.	50 mm ²
Wire cross-section AWG, min.	8
Stripping length	24 mm
Screw head	Inner hex (Allen)
Screw threading	M 6
Tightening torque, min.	3.5 Nm
Tightening torque, max.	6 Nm

17156.2

SRK 50/2A BG

SRK 50/2A BG

Technical Data

Materials

Insulation housing	Polyamide 6.6
--------------------	---------------

Flammability class UL 94	V-0
--------------------------	-----

Working temperature, min.	-40 °C
---------------------------	--------

Working temperature, max.	120 °C
---------------------------	--------

Further technical data

Mounting type	Mounting rail TS 35/7,5
---------------	-------------------------

Gauge plug acc. to EN 60 947-1	B10
--------------------------------	-----

Number of cross-connection channels	1
-------------------------------------	---

Number of test pick-off options	1
---------------------------------	---

17156.2

SRK 50/2A BG

SRK 50/2A BG

Approvals

Standards and regulations

EAC approval	TR ZU 004/2011
--------------	----------------

EAC approval granted	✓
----------------------	---

cUL Recognized

cUL Recognized	C22.2 No 158
----------------	--------------

cUL Recognized	✓
----------------	---

cUL Usegroup B: rated voltage	600 V
-------------------------------	-------

cUL Usegroup B: rated current	150 A
-------------------------------	-------

cUL Usegroup C: rated voltage	600 V
-------------------------------	-------

cUL Usegroup D: rated voltage	600 V
-------------------------------	-------

cUL Usegroup D: rated current	150 A
-------------------------------	-------

cUL Usegroup E: rated voltage	1000 V
-------------------------------	--------

cUL Usegroup E: rated current	150 A
-------------------------------	-------

cUL wire cross-section single-core (rigid) AWG, min.	10
--	----

cUL wire cross-section single-core (rigid) AWG, max.	1/0
--	-----

cUL wire cross-section stranded AWG, min.	8
---	---

cUL wire cross-section stranded AWG, max.	1/0
---	-----

cUL torque, min.	3.5 Nm
------------------	--------

cUL torque, max.	6 Nm
------------------	------

17156.2

SRK 50/2A BG

SRK 50/2A BG

Approvals

cUL Recognized

cUL wire material	Cu
-------------------	----

KEMA KEUR approval

KEMA KEUR approval	EN 60947-7-1
--------------------	--------------

KEMA KEUR approval granted	✓
----------------------------	---

KEMA rated voltage	1000 V
--------------------	--------

KEMA rated current	150 A
--------------------	-------

KEMA rated impulse voltage	8 kV
----------------------------	------

KEMA wire cross-section single core (rigid), min.	10 mm ²
---	--------------------

KEMA wire cross-section single-core (rigid), max.	70 mm ²
---	--------------------

KEMA wire cross-section stranded, min.	10 mm ²
--	--------------------

KEMA wire cross-section stranded, max.	70 mm ²
--	--------------------

KEMA torque, min.	3.5 Nm
-------------------	--------

KEMA torque, max.	6 Nm
-------------------	------

17156.2

SRK 50/2A BG

SRK 50/2A BG

Approvals

UL Recognized

UL Recognized	UL 1059
UL Recognized granted	✓
UL Usegroup B: rated voltage	600 V
UL Usegroup B: rated current	150 A
UL Usegroup C: rated voltage	600 V
UL Usegroup C: rated current	150 A
UL Usegroup D: rated voltage	600 V
UL Usegroup D: rated current	150 A
UL Usegroup E: rated voltage	1000 V
UL Usegroup E: rated current	150 A
UL wire cross-section single-core (rigid) AWG, min.	10
UL wire cross-section single-core (rigid) AWG, max.	1/0
UL wire cross-section stranded AWG, min.	10
UL wire cross-section stranded AWG, max.	1/0
UL torque, min.	30.9 Lb In.
UL torque, max.	53.1 Lb In.
UL wire material	Cu
UL factory wiring	✓
UL field wiring	✓

17156.2

SRK 50/2A BG

SRK 50/2A BG

Media



EAC



CRA[®] US

17156.2

SRK 50/2A BG

SRK 50/2A BG

Accessories

Cover



Cover, Length: 51.5 mm, Width: 18 mm, Colour: White

In general

Order number	Article designation	GTIN (EAN)	Packaging unit
17284.7	SAD 1/18/B	4044211205539	10 PC



Cover, Length: 51.5 mm, Width: 18 mm, Colour: Yellow

In general

Order number	Article designation	GTIN (EAN)	Packaging unit
17283.8	SAD 1/18/B	4044211205522	10 PC

17156.2

SRK 50/2A BG

SRK 50/2A BG

Accessories

Measurement pick-off terminal

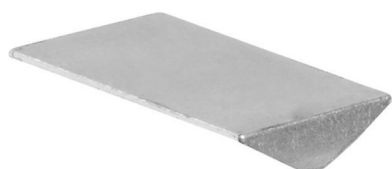


Measurement pick-off terminal, Screw connection,
Mounting type: On base, Rated cross-section: 10 mm²,
Width: 10 mm, Colour: Beige

In general

Order number	Article designation	GTIN (EAN)	Packaging unit
1121.2	MAG 50	4044211080914	10 PC

Insertion profile



Inlay plate, Colour: natural

In general

Order number	Article designation	GTIN (EAN)	Packaging unit
2274.0	EP 50	4044211050818	10 PC

17156.2

SRK 50/2A BG

SRK 50/2A BG

Accessories

Allan key

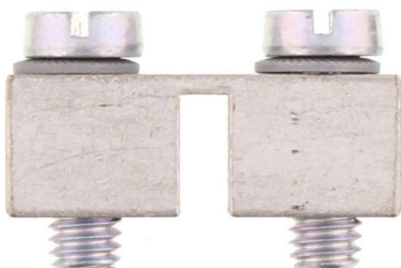


Inner hex key with bare blade

In general

Order number	Article designation	GTIN (EAN)	Packaging unit
2818.0	ISKS 5	4044211055448	1 PC

Cross connector



Cross-connector, No. of poles: 2, Mounting type: Can be screwed on, Width: 30.6 mm, Rated cross-section: 50 mm², Colour: natural

In general

Order number	Article designation	GTIN (EAN)	Packaging unit
17255.0	SQ 50/2	4044211186814	10 PC

17156.2

SRK 50/2A BG

SRK 50/2A BG

Accessories

Cross connector



Cross-connector, No. of poles: 3, Mounting type: Can be screwed on, Width: 49.2 mm, Rated cross-section: 50 mm², Colour: natural

In general

Order number	Article designation	GTIN (EAN)	Packaging unit
17256.0	SQ 50/3	4044211186821	10 PC



Cross-connector, No. of poles: 4, Mounting type: Can be screwed on, Width: 67.8 mm, Rated cross-section: 50 mm², Colour: natural

In general

Order number	Article designation	GTIN (EAN)	Packaging unit
17257.0	SQ 50/4	4044211186838	10 PC

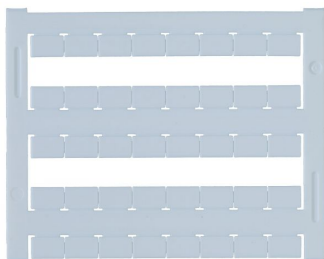
17156.2

SRK 50/2A BG

SRK 50/2A BG

Accessories

Quick-marking



Terminal marker / Pocket Maxicard, Length: 5 mm,
Width: 8 mm, Colour: White

In general

Order number	Article designation	GTIN (EAN)	Packaging unit
9323.7	PMC SB 8/40 WH	4044211129231	400 PC
