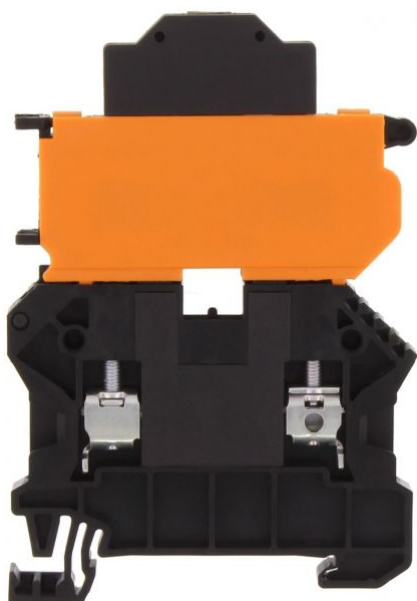


17173.4

SSIK 4/2A/LED 110-250V AC/DC BK

SSIK 4/2A/LED 110-250V AC/DC BK



Fuse-disconnect terminal, Screw connection, Mounting type: Mounting rail TS 35/7.5, Rated cross-section: 4 mm<sup>2</sup>, Width: 6.1 mm, Colour: Black

## Business data

Product description	Fuse-disconnect terminal
Packaging unit	25
Quantity unit	PC
Weight per piece (not including packaging)	19.86
Weight per piece (including packaging)	19.96
Unit of weight	G
Customs number	85369010
Country of origin	DE

17173.4

SSIK 4/2A/LED 110-250V AC/DC BK

SSIK 4/2A/LED 110-250V AC/DC BK

## Technical Data

---

### Dimensions

---

Length	58 mm
Width	6.1 mm
Height TS 35/7.5	84 mm

### Ratings

---

Rated voltage (determined by the illuminated display and fuse being used)	250 V
Rated current (as fuse-disconnect terminal)	10 A
Rated cross-section	4 mm <sup>2</sup>
Rated impulse voltage	6 kV
Overvoltage category	III
Contamination degree	3

17173.4

SSIK 4/2A/LED 110-250V AC/DC BK

SSIK 4/2A/LED 110-250V AC/DC BK

## Technical Data

---

### Connection data

---

Connection principle	Screw connection
Connection position	Lateral
Connections	2 / extraction lever
Number of terminals per level	2
Number of levels	1
Wire cross-section single-core (rigid) / stranded, min.	0.14 mm <sup>2</sup>
Wire cross-section single core (rigid)/stranded, max.	6 mm <sup>2</sup>
Wire cross-section stranded, min.	0.14 mm <sup>2</sup>
Wire cross-section stranded, max.	6 mm <sup>2</sup>
Wire cross-section stranded with wire-end ferrules, min.	0.14 mm <sup>2</sup>
Wire cross-section stranded with wire-end ferrules, max.	4 mm <sup>2</sup>
Wire cross-section AWG, min.	22
Wire cross-section AWG, max.	10
Stripping length	9 mm
Screw head	Slotted
Screw threading	M 3
Tightening torque, min.	0.5 Nm
Tightening torque, max.	1 Nm

17173.4

**SSIK 4/2A/LED 110-250V AC/DC BK**

**SSIK 4/2A/LED 110-250V AC/DC BK**

## Technical Data

---

### Materials

Insulation housing	Polyamide 6.6
Glass-fibre reinforced	✓
Flammability class UL 94	V-0
Working temperature, min.	-40 °C
Working temperature, max.	140 °C

17173.4

**SSIK 4/2A/LED 110-250V AC/DC BK**

**SSIK 4/2A/LED 110-250V AC/DC BK**

## Technical Data

---

### Further technical data

---

Mounting type	Mounting rail TS 35/7,5
Fuse size	5 x 20 / 5 x 25 / 5 x 30 mm
Gauge plug acc. to EN 60 947-1	A4
Number of cross-connection channels	2
End plate required	✓
Voltage fuse	250 V
Voltage illuminated display	110-250 V
Cross-current via illuminated display	< 5 mA
Power loss in singular arrangement - overload and short-circuit protection, max.	2,5 / 6,3 W / A
Power loss in compound arrangement - overload and short-circuit protection, max.	1,6 / 6,3 W / A
Power loss in singular arrangement - only short-circuit protection, max.	4 / 10 W / A
Power loss in compound arrangement - only short-circuit protection, max.	4 / 6,3 W / A
Version of fuse holder	Swivelling
Type of display element (defect display)	LED
Version of fuse cartridge	G fuse 5x20 / 5x25 / 5x30
Supply voltage (defect display), min.	110
Supply voltage (defect display), max.	250
Type of voltage (defect display)	AC/DC

17173.4

SSIK 4/2A/LED 110-250V AC/DC BK

SSIK 4/2A/LED 110-250V AC/DC BK

## Approvals

---

### CSA approval

---

CSA approval	C22.2 No 158
CSA approval granted	✓
CSA Usegroup C: rated voltage	600 V
CSA Usegroup C: rated current	6,3 A
CSA wire cross-section AWG, min.	22
CSA wire cross-section AWG, max.	10
CSA stripping length	9 mm
CSA torque, max.	1 Nm
CSA torque, min.	5 Nm

### CSAus approval

---

CSAus approval	UL 1059
CSAus approval granted	✓
CSAus Usegroup C: rated voltage	600 V
CSAus Usegroup C: rated current	6,3 A
CSAus wire cross-section AWG, min.	22
CSAus wire cross-section AWG, max.	10
CSAus stripping length	9 mm
CSAus torque, min.	0.5 Nm

17173.4

**SSIK 4/2A/LED 110-250V AC/DC BK**

**SSIK 4/2A/LED 110-250V AC/DC BK**

## Approvals

---

### CSAus approval

---

CSAus torque, max.	1 Nm
--------------------	------

---

### KEMA KEUR approval

---

KEMA KEUR approval	EN 60947-7-3
--------------------	--------------

---

KEMA KEUR approval granted	✓
----------------------------	---

---

KEMA rated voltage	250 V
--------------------	-------

---

KEMA voltage fuse, max.	250 V
-------------------------	-------

---

KEMA rated current	10 A
--------------------	------

---

KEMA rated impulse voltage	6 kV
----------------------------	------

---

KEMA wire cross-section single core (rigid), min.	0.14 mm <sup>2</sup>
---	----------------------

---

KEMA wire cross-section single-core (rigid), max.	6 mm <sup>2</sup>
---	-------------------

---

KEMA wire cross-section stranded, min.	0.14 mm <sup>2</sup>
--	----------------------

---

KEMA wire cross-section stranded, max.	6 mm <sup>2</sup>
--	-------------------

---

KEMA stripping length	9 mm
-----------------------	------

---

KEMA torque, min.	0.5 Nm
-------------------	--------

---

KEMA torque, max.	1 Nm
-------------------	------

---

KEMA fuse size	5 x 20 / 5 x 25 / 5 x 30 mm
----------------	-----------------------------

---

KEMA power loss in singular arrangement - overload and short-circuit protection, max.	2,5 / 6,3 W / A
---	-----------------

---

KEMA power loss in compound arrangement - overload and short-circuit protection, max.	1,6 / 6,3 W / A
---	-----------------

---

17173.4

SSIK 4/2A/LED 110-250V AC/DC BK

SSIK 4/2A/LED 110-250V AC/DC BK

## Approvals

---

### KEMA KEUR approval

---

KEMA power loss in singular arrangement - only short-circuit protection, max. 4 / 10 W / A

KEMA power loss in compound arrangement - only short-circuit protection, max. 4 / 6,3 W / A

### UL Recognized

---

UL Recognized UL 1059

UL Recognized granted ✓

UL Usegroup B: rated voltage 600 V

UL Usegroup B: rated current 6,3 A

UL Usegroup C: rated voltage 600 V

UL Usegroup C: rated current 6,3 A

UL Usegroup D: rated voltage 600 V

UL Usegroup D: rated current 6,3 A

UL wire cross-section single-core (rigid) AWG, min. 22

UL wire cross-section single-core (rigid) AWG, max. 10

UL wire cross-section stranded AWG, min. 22

UL wire cross-section stranded AWG, max. 10

UL torque, min. 4.42 Lb In.

UL torque, max. 8.85 Lb In.

UL wire material Cu



17173.4

SSIK 4/2A/LED 110-250V AC/DC BK

SSIK 4/2A/LED 110-250V AC/DC BK

## Approvals

---

### UL Recognized

---

UL factory wiring

✓

UL field wiring

✓

---

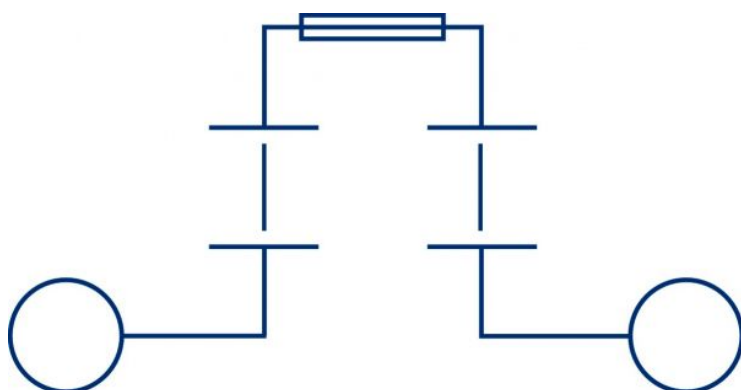
17173.4

SSIK 4/2A/LED 110-250V AC/DC BK

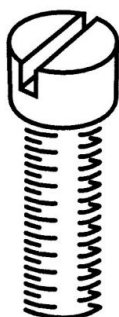
SSIK 4/2A/LED 110-250V AC/DC BK

## Media

---



**M3**



C

US



17173.4

SSIK 4/2A/LED 110-250V AC/DC BK

SSIK 4/2A/LED 110-250V AC/DC BK

## Accessories

---

### Measurement pick-off terminal

---



Measurement pick-off terminal, Screw connection, Mounting type: On base, Rated cross-section: 2.5 mm<sup>2</sup>, Width: 5.9 mm, Colour: Beige

### In general

Order number	Article designation	GTIN (EAN)	Packaging unit
17120.2	SMAG 4/2,5	4044211172107	10 PC

### End plate

---



End plate, Width: 1.5 mm, Colour: Black

### In general

Order number	Article designation	GTIN (EAN)	Packaging unit
17258.4	SAP SSIK 4/6	4044211179830	20 PC

17173.4

SSIK 4/2A/LED 110-250V AC/DC BK

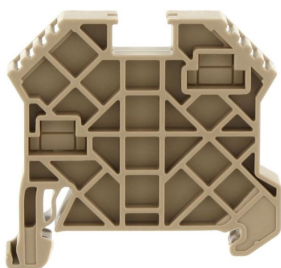
SSIK 4/2A/LED 110-250V AC/DC BK

## Accessories

---

### End bracket

---



End stop, Mounting type: Mounting rail TS 35/7.5 and TS 35/15, Width: 8 mm, Colour: Beige

### In general

Order number	Article designation	GTIN (EAN)	Packaging unit
17250.2	SES 35	4044211178253	50 PC

---

### Insulating cover for cross-connector

---



Insulating cap, Colour: Yellow

### In general

Order number	Article designation	GTIN (EAN)	Packaging unit
17200.8	SQIK 2,5-10	4044211148539	20 PC

---

17173.4

SSIK 4/2A/LED 110-250V AC/DC BK

SSIK 4/2A/LED 110-250V AC/DC BK

## Accessories

---

### Insulated cross connector

---



Insulated cross-connector, No. of poles: 10, Mounting type: Plug in, Width: 60.1 mm, Rated cross-section: 4 mm<sup>2</sup>, Colour: Yellow

#### In general

Order number	Article designation	GTIN (EAN)	Packaging unit
17219.8	SQI 4/10	4044211148720	10 PC

---



Insulated cross-connector, No. of poles: 2, Mounting type: Plug in, Width: 11.3 mm, Rated cross-section: 4 mm<sup>2</sup>, Colour: Yellow

#### In general

Order number	Article designation	GTIN (EAN)	Packaging unit
17211.8	SQI 4/2	4044211148645	50 PC

---

17173.4

**SSIK 4/2A/LED 110-250V AC/DC BK**

**SSIK 4/2A/LED 110-250V AC/DC BK**

## Accessories

---

### Insulated cross connector

---



Insulated cross-connector, No. of poles: 3, Mounting type: Plug in, Width: 17.4 mm, Rated cross-section: 4 mm<sup>2</sup>, Colour: Yellow

### In general

Order number	Article designation	GTIN (EAN)	Packaging unit
17212.8	SQI 4/3	4044211148652	50 PC



Insulated cross-connector, No. of poles: 30, Mounting type: Plug in, Width: 181.1 mm, Rated cross-section: 4 mm<sup>2</sup>, Colour: Yellow

### In general

Order number	Article designation	GTIN (EAN)	Packaging unit
17220.8	SQI 4/30	4044211148737	5 PC

17173.4

SSIK 4/2A/LED 110-250V AC/DC BK

SSIK 4/2A/LED 110-250V AC/DC BK

## Accessories

---

### Insulated cross connector

---

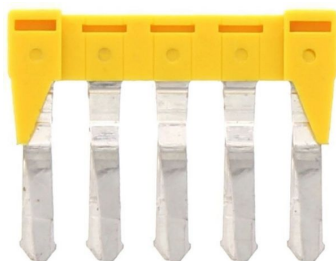


Insulated cross-connector, No. of poles: 4, Mounting type: Plug in, Width: 23.5 mm, Rated cross-section: 4 mm<sup>2</sup>, Colour: Yellow

### In general

Order number	Article designation	GTIN (EAN)	Packaging unit
17213.8	SQI 4/4	4044211148669	20 PC

---



Insulated cross-connector, No. of poles: 5, Mounting type: Plug in, Width: 29.6 mm, Rated cross-section: 4 mm<sup>2</sup>, Colour: Yellow

### In general

Order number	Article designation	GTIN (EAN)	Packaging unit
17214.8	SQI 4/5	4044211148676	20 PC

---

17173.4

SSIK 4/2A/LED 110-250V AC/DC BK

SSIK 4/2A/LED 110-250V AC/DC BK

## Accessories

---

### Insulated cross connector

---



Insulated cross-connector, No. of poles: 8, Mounting type: Plug in, Width: 47.9 mm, Rated cross-section: 4 mm<sup>2</sup>, Colour: Yellow

### In general

Order number	Article designation	GTIN (EAN)	Packaging unit
17217.8	SQI 4/8	4044211148706	10 PC

---



Insulated cross-connector, No. of poles: 9, Mounting type: Plug in, Width: 54 mm, Rated cross-section: 4 mm<sup>2</sup>, Colour: Yellow

### In general

Order number	Article designation	GTIN (EAN)	Packaging unit
17218.8	SQI 4/9	4044211148713	10 PC

---



17173.4

SSIK 4/2A/LED 110-250V AC/DC BK

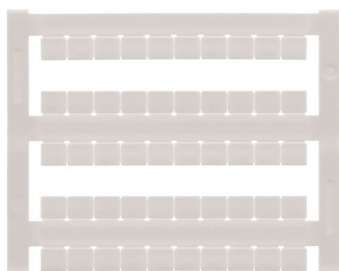
SSIK 4/2A/LED 110-250V AC/DC BK

## Accessories

---

## Quick-marking

---



Terminal marker / Pocket Maxicard, Length: 5 mm,  
Width: 6 mm, Colour: White

## In general

Order number	Article designation	GTIN (EAN)	Packaging unit
4702.7	PMC SB 6/50 WH	4044211089986	500 PC

## Screw driver

---



Screwdriver with bare blade, Colour: Black-grey

## In general

Order number	Article designation	GTIN (EAN)	Packaging unit
1086.0	SDB 0,6x3,5	4044211014797	1 PC

17173.4

SSIK 4/2A/LED 110-250V AC/DC BK

SSIK 4/2A/LED 110-250V AC/DC BK

## Accessories

---

### Connection sleeve

---



Connecting sleeve, Colour: Orange

---

### In general

Order number	Article designation	GTIN (EAN)	Packaging unit
2873.3	VBS 2/10	4044211055981	20 PC

---



Connecting sleeve, Colour: Orange

---

### In general

Order number	Article designation	GTIN (EAN)	Packaging unit
2874.3	VBS 3/10	4044211055998	20 PC

---